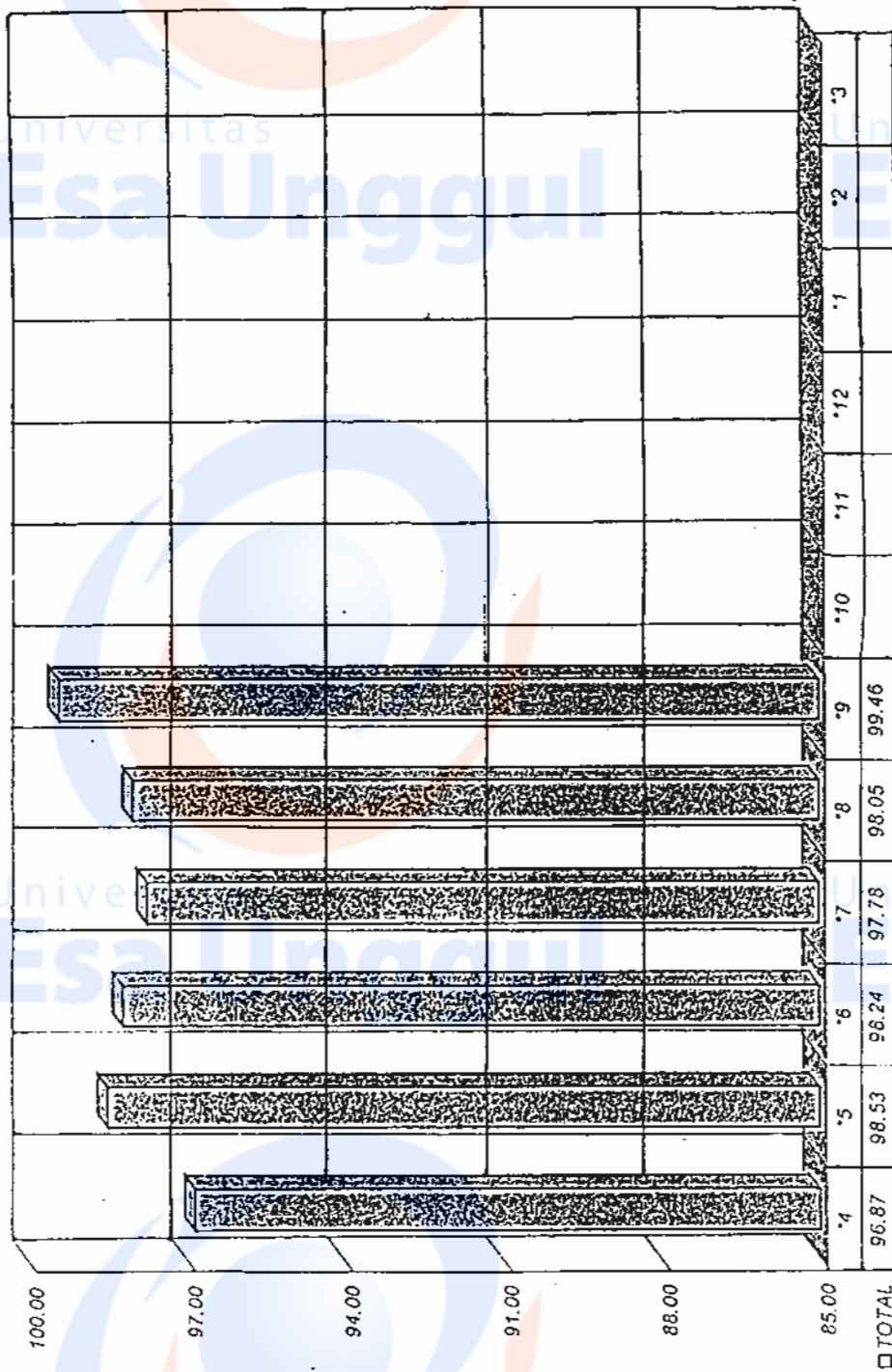


SPEAKER LINE OPER. MASUK % RECORD (04 / 2001 - 03 / 2002)

opr.mn-2001

	'4	'5	'6	'7	'8	'9	'10	'11	'12	'1	'2	'3
TOTAL	96.87	98.53	98.24	97.78	98.05	99.46						



SPEAKER LINE PQC REJ% RECORD (04 / 2001 - 03 / 2002)

TC1 : 02-OCTOBER-2001

LINE	'4	'5	'6	'7	'8	'9	'10	'11	'12	'1	'2	'3
IC12	0.52	0.4	0.35	0.34	0.35	0.27						
TOTAL	0.52	0.4	0.35	0.34	0.35	0.27						

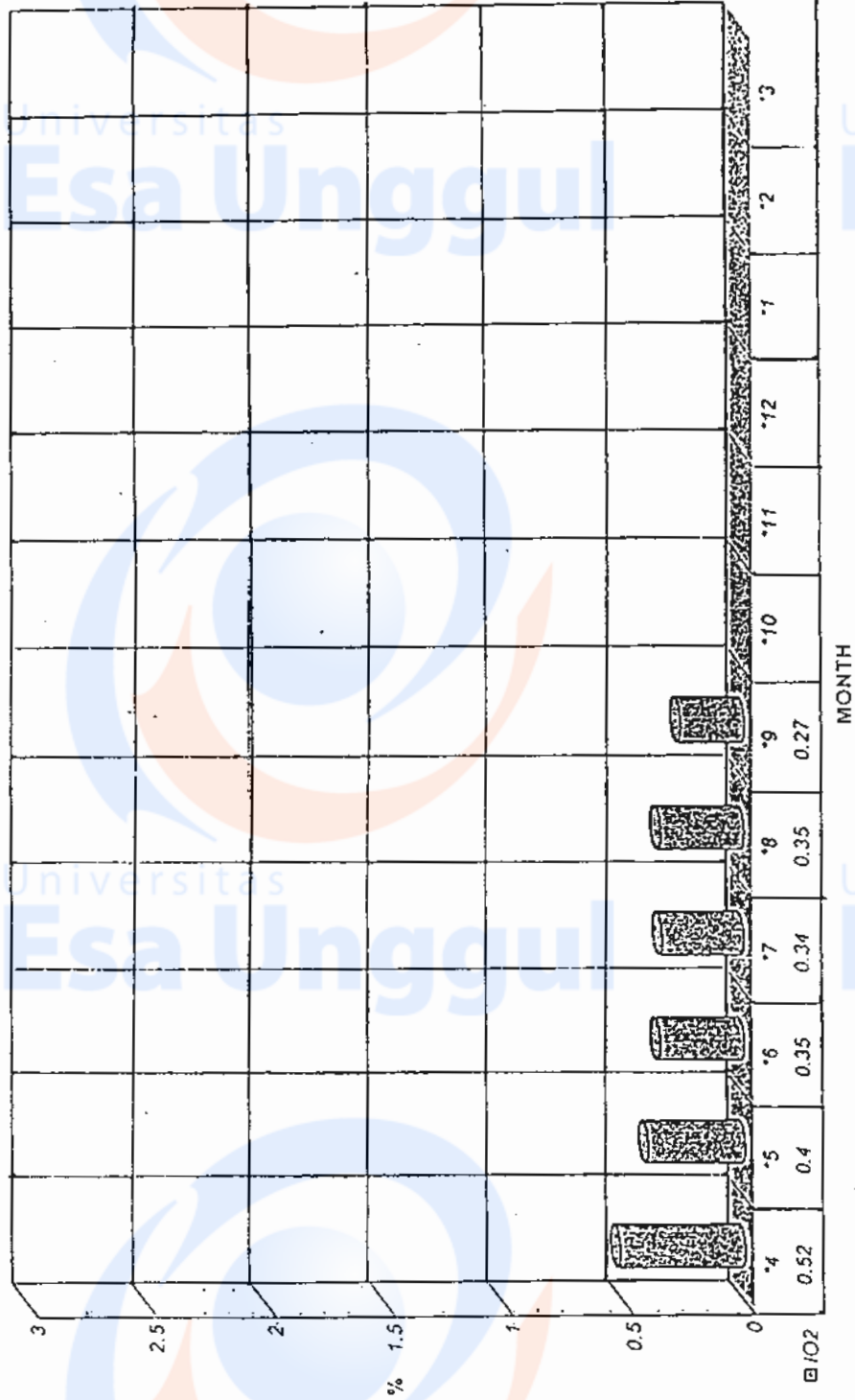


FIGURE 2

TGL: 02-OKT(OKT)BER-2001

prodi-2001

	'4	'5	'6	'7	'8	'9	'10	'11	'12	'1	'2	'3
TOTAL	46,868	43,939	64,161	84,308	80,109	100,493						

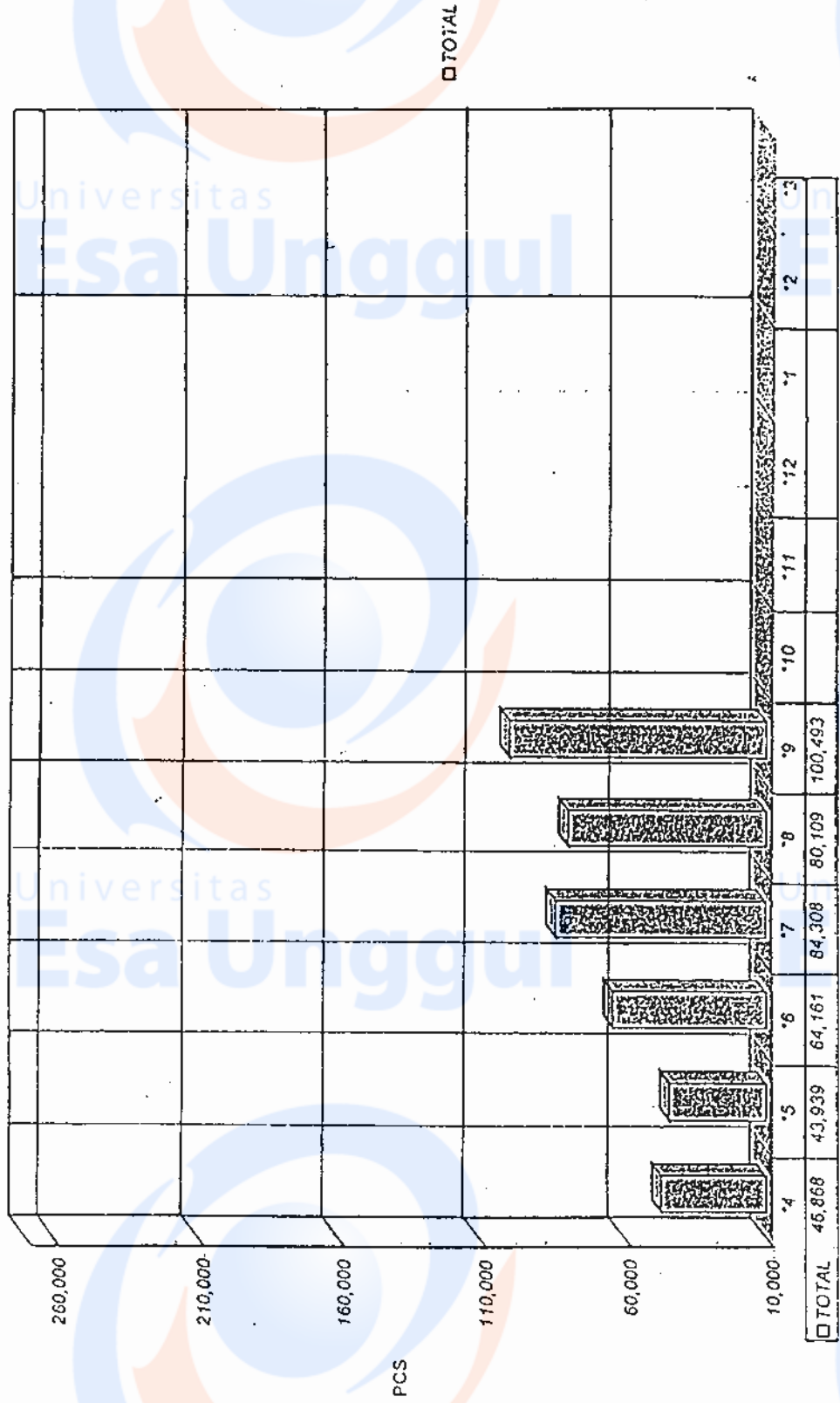


FIGURE 3

SPEAKER FACTORY TOTAL RECORD LIST (04 / 2001 - 03 / 2002)

TGL : 02-OKTOKBER-2001

total-2001

No.	ITEM	UNIT	*4	*5	*6	*7	*8	*9	*10	*11	*12	*1	*2	*3
1	OPERATOR	QTY	85	85	84	84	84	84						
2	OPR. MASUK	%	96.87	98.53	98.24	97.78	98.05	99.46						
3	OPR. OUT	%	1.16	0.00	0.00	0.00	0.00	0.00						
4	PRODU.	PCS	46,868	43,939	64,161	84,308	80,109	100,493						
5	ACC.	%	94.70	95.30	99.97	91.3	99.20	98.60						
6	REJ.	%	0.52	0.40	0.35	0.34	0.35	0.27						
7	F.G. MASUK	PCS	43,229	48,781	80,494	93,092	112,479	82,162						
8	EXPORT	PCS	45,837	46,397	72,708	105,145	97,366	99,937						

	x1	x2	y
1	16,00	19,00	36,00
2	17,00	18,00	38,00
3	14,00	14,00	28,00
4	18,00	16,00	26,00
5	20,00	18,00	32,00
6	16,00	19,00	37,00
7	17,00	20,00	40,00
8	18,00	20,00	29,00
9	15,00	17,00	27,00
10	16,00	16,00	36,00
11	18,00	16,00	35,00
12	19,00	18,00	29,00
13	20,00	19,00	40,00
14	16,00	18,00	32,00
15	15,00	19,00	30,00
16			

Regression

Descriptive Statistics

	Mean	Std. Deviation	N
Kinerja	33,0000	4,7359	15
Motivasi	17,0000	1,8127	15

Correlations

		Kinerja	Motivasi
Pearson Correlation	Kinerja	1,000	,208
	Motivasi	,208	1,000
Sig. (1-tailed)	Kinerja	.	,228
	Motivasi	,228	.
N	Kinerja	15	15
	Motivasi	15	15

Variables Entered/Removed^b

Model	Variables Entered	Variables Removed	Method
1.	Motivasi ^a		Enter

- a. All requested variables entered.
 b. Dependent Variable: Kinerja

Model Summary

Model	R	R Square	Adjusted R Square	Std. Error of the Estimate
1	,208 ^a	,043	-,030	4,8072

Model Summary

Model	Change Statistics				
	R Square Change	F Change	df1	df2	Sig. F Change
1	,043	,588	1	13	,457

- a. Predictors: (Constant), Motivasi

ANOVA^b

Model		Sum of Squares	df	Mean Square	F	Sig.
1	Regression	13,587	1	13,587	,588	,457 ^a
	Residual	300,413	13	23,109		
	Total	314,000	14			

a. Predictors: (Constant), Motivasi

b. Dependent Variable: Kinerja

Coefficients^a

Model		Unstandardized Coefficients		Standardized Coefficients	t	Sig.
		B	Std. Error	Beta		
1	(Constant)	23,761	12,113		1,962	,072
	Motivasi	,543	,709	,208	,767	,457

a. Dependent Variable: Kinerja

Regression

Descriptive Statistics

	Mean	Std. Deviation	N
Kinerja	33,0000	4,7359	15
Kepuasan Karyawan	17,8000	1,6987	15

Correlations

		Kinerja	Kepuasan Karyawan
Pearson Correlation	Kinerja	1,000	,417
	Kepuasan Karyawan	,417	1,000
Sig. (1-tailed)	Kinerja	,	,061
	Kepuasan Karyawan	,061	,
N	Kinerja	15	15
	Kepuasan Karyawan	15	15

Variables Entered/Removed^b

Model	Variables Entered	Variables Removed	Method
1	Kepuasan Karyawan ^a		Enter

a. All requested variables entered.

b. Dependent Variable: Kinerja

Model Summary

Model	R	R Square	Adjusted R Square	Std. Error of the Estimate
1	,417 ^a	,174	,111	4,4663

Model Summary

Model	Change Statistics				
	R Square Change	F Change	df1	df2	Sig. F Change
1	,174	2,741	1	13	,122

a. Predictors: (Constant), Kepuasan Karyawan

ANOVA^b

Model		Sum of Squares	df	Mean Square	F	Sig.
1	Regression	54,678	1	54,678	2,741	,122 ^a
	Residual	259,322	13	19,948		
	Total	314,000	14			

a. Predictors: (Constant), Kepuasan Karyawan

b. Dependent Variable: Kinerja

Coefficients^a

Model		Unstandardized Coefficients		Standardized Coefficients	t	Sig.
		B	Std. Error	Beta		
1	(Constant)	12,292	12,561		,979	,346
	Kepuasan Karyawan	1,163	,703	,417	1,656	,122

a. Dependent Variable: Kinerja

Regression

Descriptive Statistics

	Mean	Std. Deviation	N
Kinerja	33,0000	4,7359	15
Motivasi	17,0000	1,8127	15
Kepuasan Karyawan	17,8000	1,6987	15

Correlations

		Kinerja	Motivasi	Kepuasan Karyawan
Pearson Correlation	Kinerja	1,000	,208	,417
	Motivasi	,208	1,000	,302
	Kepuasan Karyawan	,417	,302	1,000
Sig. (1-tailed)	Kinerja	,	,228	,061
	Motivasi	,228	,	,137
	Kepuasan Karyawan	,061	,137	,
N	Kinerja	15	15	15
	Motivasi	15	15	15
	Kepuasan Karyawan	15	15	15

Variables Entered/Removed^b

Model	Variables Entered	Variables Removed	Method
1	Kepuasan Karyawan, Motivasi		Enter

a. All requested variables entered.

b. Dependent Variable: Kinerja

Model Summary

Model	R	R Square	Adjusted R Square	Std. Error of the Estimate
1	,426 ^a	,182	,045	4,6277

Model Summary

Model	Change Statistics				
	R Square Change	F Change	df1	df2	Sig. F Change
1	,182	1,331	2	12	,301

a. Predictors: (Constant), Kepuasan Karyawan, Motivasi

ANOVA^b

Model		Sum of Squares	df	Mean Square	F	Sig.
1	Regression	57,011	2	28,505	1,331	,301 ^a
	Residual	256,989	12	21,416		
	Total	314,000	14			

a. Predictors: (Constant), Kepuasan Karyawan, Motivasi

b. Dependent Variable: Kinerja

Coefficients^a

Model		Unstandardized Coefficients		Standardized Coefficients	t	Sig.
		B	Std. Error	Beta		
1	(Constant)	9,630	15,312		,629	,541
	Motivasi	,236	,716	,090	,330	,747
	Kepuasan Karyawan	1,087	,764	,390	1,424	,180

Lampiran 1.

	Indikator															Rata-rata
	Motivasi															
	1	2	3	4	5	6	7	8	9	10	11	12	13	14	15	
I																
1	5	5	4	5	5	4	5	5	4	4	5	5	5	5	4	4.67
2	4	5	3	5	5	4	4	5	4	3	5	5	5	4	4	4.33
3	3	3	4	4	5	5	4	4	4	4	5	5	5	4	4	4.20
4	4	4	3	4	5	3	4	4	3	4	3	4	5	3	3	3.73
Sub Total	16	17	14	18	20	16	17	18	15	15	16	19	20	16	15	16.93
II																
li																
	Kepuasan Kerja															
1	5	5	4	5	5	5	5	5	5	5	5	5	5	5	5	4.93
2	5	5	3	4	5	5	5	5	5	4	4	5	5	5	5	4.67
3	5	4	3	3	4	5	5	5	4	4	3	5	5	5	5	4.33
4	4	4	4	4	4	4	4	5	3	3	4	3	4	3	4	3.87
Sub Total	19	18	14	16	18	19	20	20	17	16	16	18	19	18	19	17.80
III																
	Kinerja															
a. Karyawan																
1	5	5	4	4	4	4	5	5	5	3	5	4	5	4	4	4.47
2	5	5	3	4	5	5	5	5	5	4	5	5	5	5	4	4.67
3	4	5	5	4	4	4	5	5	3	3	5	4	5	5	5	4.47
4	5	5	4	3	4	5	5	5	3	4	5	3	5	4	3	4.20
b. Perusahaan																
5	5	5	3	2	3	5	5	4	3	3	4	4	5	4	4	3.93
6	4	4	3	3	4	4	5	3	3	5	4	3	5	3	3	3.73
7	4	4	3	3	4	4	5	3	4	4	3	3	5	3	4	3.73
8	4	5	3	3	4	4	4	5	3	3	4	4	3	5	4	3.80
Sub Total	36	38	28	26	32	37	40	29	27	36	35	29	40	32	30	33.00

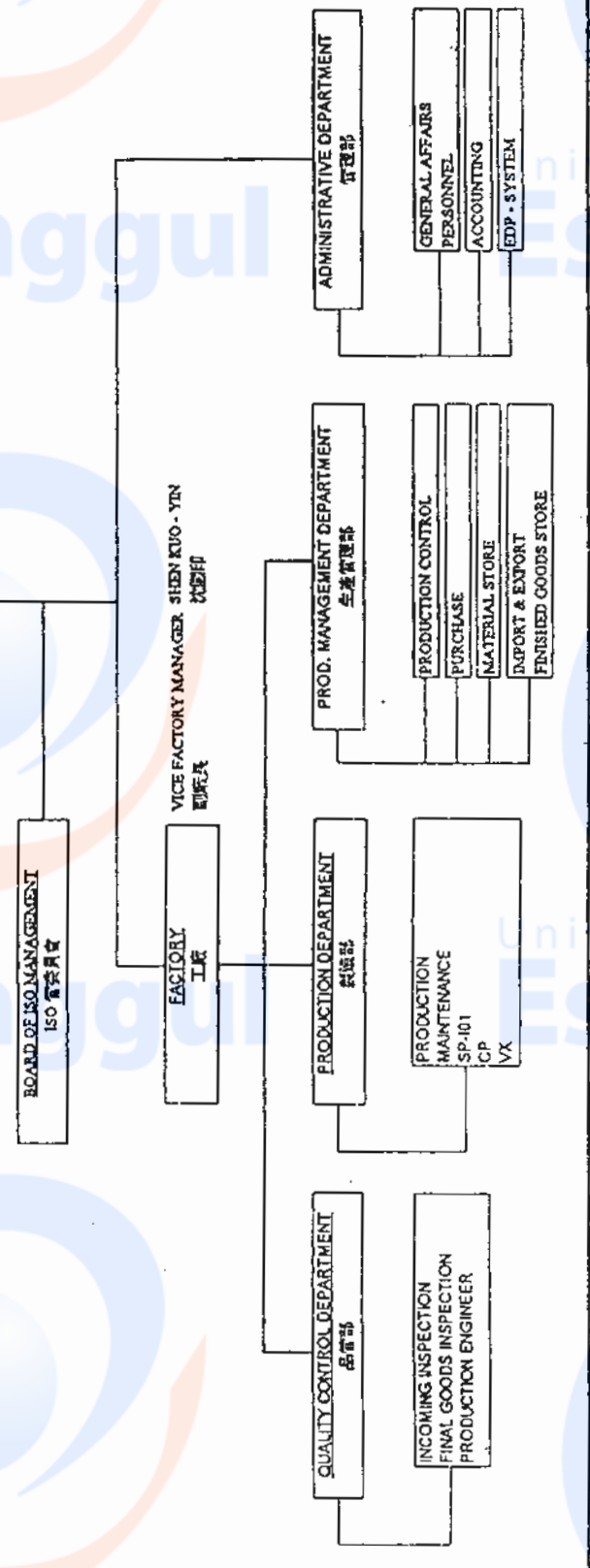
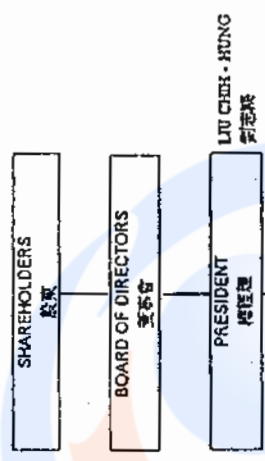
1, 2, 3 s/d 15 adalah urutan nama karyawan yang dijadikan sampel.

Skor rata-rata hasil kuesioner

ORGANIZATION CHART
PT. MONETECH AUDIO INDONESIA
MNI 組織圖

22 MAY, 2001

MNI 董事會 役員
 董事長 鈴木祥一
 董事 向坂英明
 董事 火田 定雄
 董事 劉志輝



COMPANY PROFILE

1. COMPANY NAME : PT. MONETECH AUDIO INDONESIA
 ADDRESS : KAWASAN BERIKAT NUSANTARA
 JL. SUMATERA RAYA BLOK E – 06
 CAKUNG CILINCING
 JAKARTA 14140
 TELEPHONE : 021-4418226 (HUNTING)
 FAX : 021-4418234

2. SET UP : NOVEMBER 15, 1996
 DATE OF INCORPORATE : JANUARY 29, 1997
 COMMENCEMENT OF OPERATION : MAY 09, 1997

3. AUTHORISED CAPITAL : US \$ 3,000,000.00
 PAID UP CAPITAL : US \$ 1,000,000.00

4. SHAREHOLDER :
 - PIONEER ELECTRONIC (TAIWAN) CORP.
 282, SIN-YI ROAD, TAH-SI, TAO-YUAN
 TAIWAN, R.O.C.
 - MONETECH AUDIO SDN.BHD.
 PLOT 4, DARULAMAN INDUSTRIAL ESTATE,
 BANDAR DARULAMAN 06000 JIṬRA,
 KEDAH DARULAMAN, MALAYSIA.

5. LAND AREA : 7,000 M²
 BUILDING AREA :
 1. FACTORY 1,922.40 M²
 2. WAREHOUSE 1,278.60 M²
 3. OFFICE 679.80 M²
 4. OTHERS 460.90 M²

6. LONG POSITION OF BOARD OF DIRECTORS : YOICHI SUZUKI 鈴木 洋一
 HIDEAKI ABE 阿部 英明
 SADAO HATA 火田 定雄
 LIU CHIH-HUNG 劉 志鴻
 PRESIDENT DIRECTOR : LIU CHIH-HUNG

7. PRODUCTS MANUFACTURED : LOUD SPEAKER

8. TOTAL STAFF STRENGTH

APR, 2001

1. OPERATORS	109 PERSONS
2. STAFFS	14 PERSONS
3. EXPATRIATES FROM TAI WAN	<u>2 PERSONS</u>
	125 PERSONS

9. PRODUCTION CAPACITIES : 300,000 PCS PER-MONTH (2 LINES)

10. PRODUCTION FACILITIES :

(1) GLUE SPREADING MACHINE	23 SETS
(2) MAGNETIZER	8 SETS
(3) OIL PRESS MOUNTING MACHINE	2 SETS
(4) THE SHAPE MACHINE	3 SETS
(5) SEVER MACHINE	3 SETS
(6) AN AUTOMATIC SPLIT MACHINE	1 SETS

11. Q.C. FACILITIES :

(1) INCOMING CHECKING FACILITY	:	1 SET
(2) FINISHED GOOD CHECKING FACILITY	:	1 SET
(3) B & K TESTING INSTRUMENT	:	1 SET

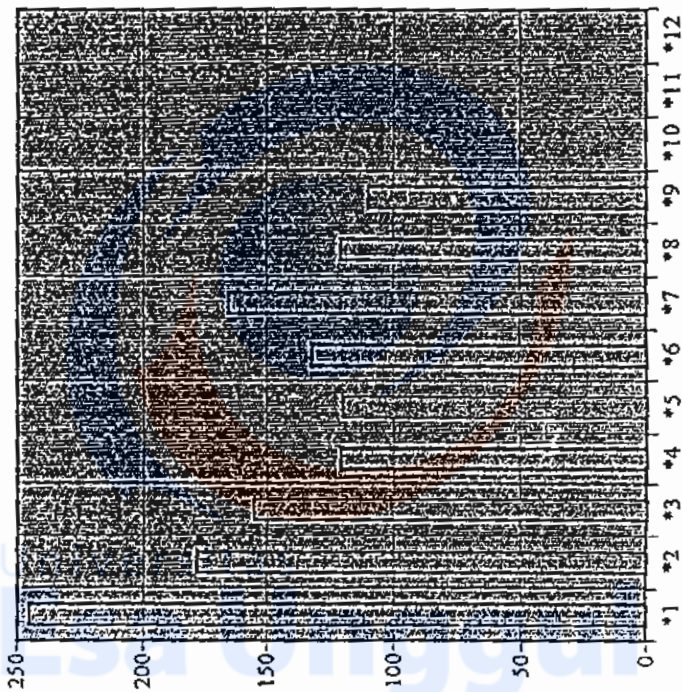
12. CORRESPONDING BANK: - LIPPO BANK
- CITI BANK
- BANK BUKOPIN

13. MAIN CLIENTS : 1. PT. AST INDONESIA
2. DAIHATSU MOTOR CO., LTD
3. PIONEER ELECTRONIC CORP., GROUP
4. SONY CORP.,
5. KENWOOD CORP.,
6. PT. DAI HWA INDUSTRIAL INDONESIA

GRAFIK ABSENSI JAMUR 2001

	*1	*2	*3	*4	*5	*6	*7	*8	*9	*10	*11	*12
TOTAL	245	178	155	121	120	132	165	121	110			

ABSENSI 2001



	*1	*2	*3	*4	*5	*6	*7	*8	*9	*10	*11	*12
TOTAL	245	178	155	121	120	132	165	121	110			