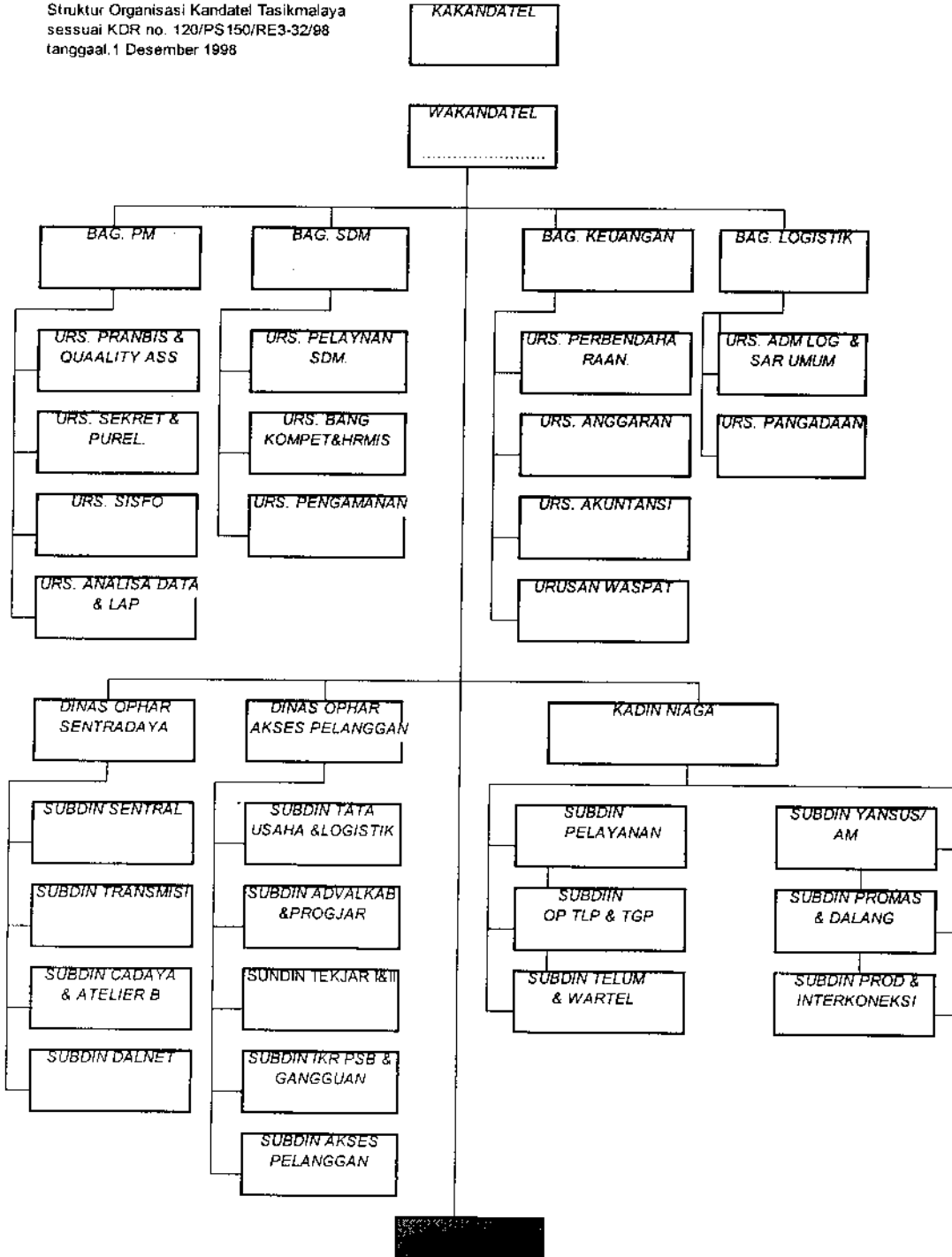


Lampiran 1

Struktur Organisasi Kandatel Tasikmalaya

Struktur Organisasi Kandatel Tasikmalaya
 sesuai KDR no. 120/PS/150/RE3-32/98
 tanggal. 1 Desember 1998



Lampiran 2

Realisasi Biaya dan Kinerja TUC tahun 1999 - 2000

NO	TH	BULAN	BIAYA		KOperasi	KOperasi (transformasi)	KBiaya	KPendapatan
			PEMELIHARAAN	PERBAIKAN				
1	1999	JAN	17,257,960	11,795,939	99.29	85.17	93.14	101.70
2		FEB	15,962,760	10,821,962	99.28	85.13	97.24	113.26
3		MAR	16,727,600	10,821,962	99.34	85.34	81.26	98.28
4		APR	16,160,700	9,415,107	99.40	85.56	108.56	95.80
5		MEI	16,604,780	8,549,350	99.46	85.79	153.29	128.21
6		JUN	16,520,820	14,068,551	99.07	84.47	95.92	83.86
7		JUL	16,975,300	21,752,144	98.60	83.20	79.17	102.64
8		AGS	16,626,820	15,367,187	99.01	84.29	138.76	111.98
9		SEP	15,593,280	15,150,747	98.99	83.98	138.72	102.28
10		OKT	16,085,540	15,800,065	98.98	83.98	120.35	102.39
11		NOV	15,654,320	12,661,696	99.15	84.71	118.63	95.98
12		DES	15,370,200	19,371,313	98.75	83.45	81.85	90.31
13	2000	JAN	16,270,540	9,016,790	98.75	83.45	44.33	252.12
14		FEB	14,919,560	7,902,356	98.83	83.71	49.15	232.77
15		MAR	15,859,400	8,864,822	98.76	83.71	45.00	249.13
16		APR	15,542,380	11,346,972	98.36	82.73	94.66	99.99
17		MEI	15,576,460	12,562,719	98.24	82.29	89.32	100.90
18		JUN	15,566,500	10,840,411	98.48	82.97	96.12	101.53
19		JUL	15,847,860	11,498,941	98.39	82.73	66.05	598.80
20		AGS	15,563,260	10,080,569	98.58	83.20	25.80	592.15
21		SEP	15,052,760	7,953,012	98.89	83.98	44.32	576.72
22		OKT	15,004,600	12,157,470	98.29	82.51	36.06	578.89
23		NOV	14,649,740	12,461,407	98.24	82.29	35.91	569.16
24		DES	15,185,700	6,078,735	99.13	84.65	48.85	594.13

Lampiran 3

Analisis Pengaruh Biaya Pemeliharaan dan Perbaikan terhadap Kinerja Operasi

1. Pengujian Asumsi

a. Uji Multikolinieritas

Coefficients^a

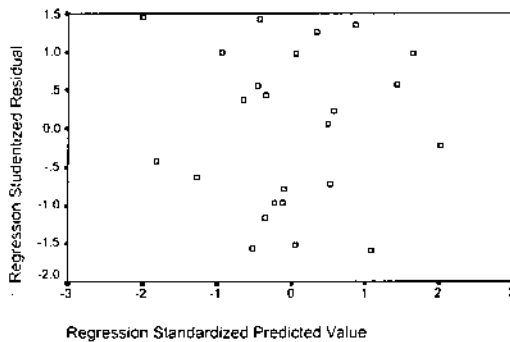
Model		Collinearity Statistics	
		Tolerance	VIF
1	PEMEL	.917	1.091
	BAIK	.917	1.091

a. Dependent Variable: K_OP

b. Uji Heteroskedastisitas

Scatterplot

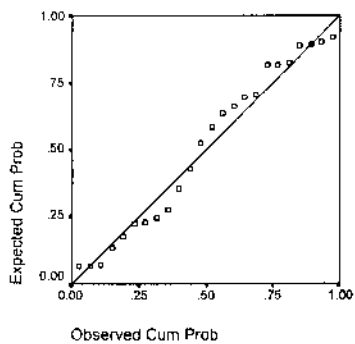
Dependent Variable: K_OP



c. Uji Normalitas

Normal P-P Plot of Regression Stan

Dependent Variable: K_OP



Lampiran 3 (lanjutan)

d. Uji Autokorelasi

Model Summary^b

Model	Durbin-Watson
1	1.200 ^a

a. Predictors: (Constant), BAIK, PEMEL

b. Dependent Variable: K_OP

2. Menguji Signifikansi Model

a. Model Summary

Model Summary

Model	R	R Square	Adjusted R Square	Std. Error of the Estimate
1	.676 ^a	.458	.406	.8102

a. Predictors: (Constant), BAIK, PEMEL

b. Anova atau F test

ANOVA^b

Model		Sum of Squares	df	Mean Square	F	Sig.
1	Regression	11.630	2	5.815	8.859	.002 ^a
	Residual	13.784	21	.656		
	Total	25.414	23			

a. Predictors: (Constant), BAIK, PEMEL

b. Dependent Variable: K_OP

c. Koefisien Regresi

Coefficients^a

Model		Unstandardized Coefficients		Standardized Coefficients	t	Sig.
		B	Std. Error	Beta		
1	(Constant)	69.240	3.968		17.449	.000
	PEMEL	1.017E-06	.000	.661	3.940	.001
	BAIK	-1.24E-07	.000	-.429	-2.554	.018

a. Dependent Variable: K_OP

Lampiran 3 (lanjutan)

d. Uji t

Coefficients^a

Model		Unstandardized Coefficients		Standardized Coefficients	t	Sig.
		B	Std. Error	Beta		
1	(Constant)	69.240	3.968		17.449	.000
	PEMEL	1.017E-06	.000	.661	3.940	.001
	BAIK	-1.24E-07	.000	-.429	-2.554	.018

a. Dependent Variable: K_OP

Lampiran 4

Analisis Pengaruh Biaya Pemeliharaan dan Perbaikan terhadap Kinerja Biaya

1. Pengujian Asumsi

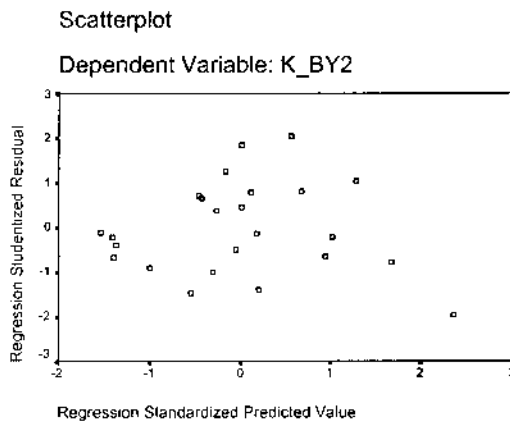
a. Uji Multikolinieritas

Coefficients^a

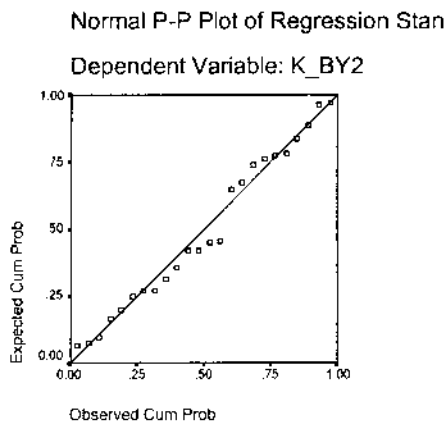
Model		Collinearity Statistics	
		Tolerance	VIF
1	BAIK_2	.917	1.091
	PELIHAR3	.917	1.091

a. Dependent Variable: K_BY2

b. Uji Heteroskedastisitas



c. Uji Normalitas



Lampiran 4 (lanjutan)

d. Uji Autokorelasi

Model Summary^a

Model	Durbin-Watson
1	1.519 ^a

a. Predictors: (Constant), PELIHAR3, BAIK_2

b. Dependent Variable: K_BY2

2. Menguji Signifikansi Model

a. Model Summary

Model Summary

Model	R	R Square	Adjusted R Square	Std. Error of the Estimate
1	.534 ^a	.285	.217	31.9860

a. Predictors: (Constant), PELIHAR3, BAIK_2

b. Anova atau F test

ANOVA^a

Model		Sum of Squares	df	Mean Square	F	Sig.
1	Regression	8550.540	2	4275.270	4.179	.030 ^a
	Residual	21485.187	21	1023.104		
	Total	30035.726	23			

a. Predictors: (Constant), PELIHAR3, BAIK_2

b. Dependent Variable: K_BY2

c. Koefisien Regresi

Coefficients^a

Model		Unstandardized Coefficients		Standardized Coefficients	t	Sig.
		B	Std. Error	Beta		
1	(Constant)	-310.778	156.665		-1.984	.061
	BAIK_2	1.975E-06	.000	.199	1.032	.314
	PELIHAR3	2.332E-05	.000	.441	2.289	.033

a. Dependent Variable: K_BY2

Lampiran 4 (lanjutan)

d. Uji t

Coefficients^a

Model		Unstandardized Coefficients		Standardized Coefficients	t	Sig.
		B	Std. Error	Beta		
1	(Constant)	-310.778	156.665		-1.984	.061
	BAIK_2	1.975E-06	.000	.199	1.032	.314
	PELIHAR3	2.332E-05	.000	.441	2.289	.033

a. Dependent Variable: K_BY2

Coefficients^a

Model		Unstandardized Coefficients		Standardized Coefficients	t	Sig.
		B	Std. Error	Beta		
1	(Constant)	-335.236	155.088		-2.162	.042
	PELIHAR3	2.635E-05	.000	.498	2.697	.013

a. Dependent Variable: K_BY2

Lampiran 5

Analisis Pengaruh Biaya Pemeliharaan dan Perbaikan terhadap Kinerja Pendapatan

1. Pengujian Asumsi

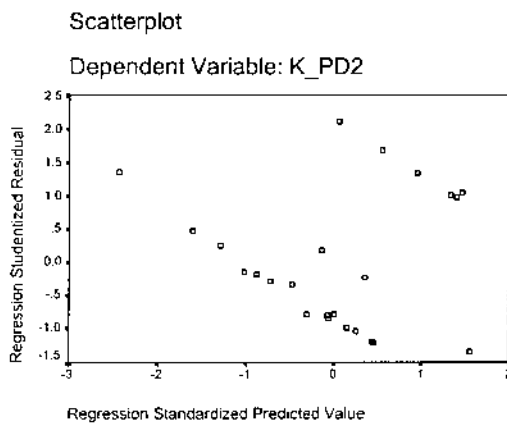
a. Uji Multikolinieritas

Coefficients^a

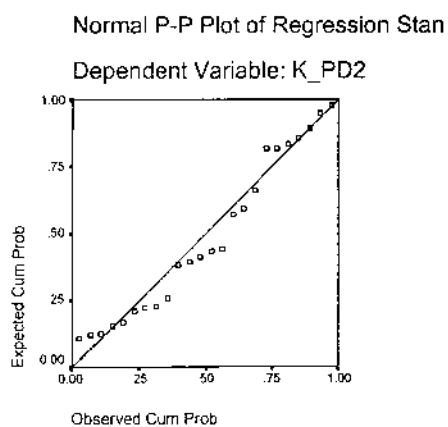
Model		Collinearity Statistics	
		Tolerance	VIF
1	BAIK_2	.917	1.091
	PELIHAR3	.917	1.091

a. Dependent Variable: K_PD2

b. Uji Heteroskedastisitas



c. Uji Normalitas



Lampiran 5 (lanjutan)

d. Uji Autokorelasi

Model Summary^a

Model	Durbin-Watson
1	1.060 ^a

a. Predictors: (Constant), PELIHAR3, BAIK_2

b. Dependent Variable: K_PD2

2. Menguji Signifikasi Model

a. Model Summary

Model Summary

Model	R	R Square	Adjusted R Square	Std. Error of the Estimate
1	.625 ^a	.390	.332	170.6176

a. Predictors: (Constant), PELIHAR3, BAIK_2

b. Anova atau F test

ANOVA^a

Model		Sum of Squares	df	Mean Square	F	Sig.
1	Regression	391065.4	2	195532.676	6.717	.006 ^a
	Residual	611317.8	21	29110.371		
	Total	1002383	23			

a. Predictors: (Constant), PELIHAR3, BAIK_2

b. Dependent Variable: K_PD2

c. Koefisien Regresi

Coefficients^a

Model		Unstandardized Coefficients		Standardized Coefficients	t	Sig.
		B	Std. Error	Beta		
1	(Constant)	2816.272	835.672		3.370	.003
	BAIK_2	-1.52E-05	.000	-.265	-1.489	.151
	PELIHAR3	-1.51E-04	.000	-.494	-2.778	.011

a. Dependent Variable: K_PD2

Lampiran 5 (lanjutan)

d. Uji t

Coefficients^a

Model		Unstandardized Coefficients		Standardized Coefficients	t	Sig.
		B	Std. Error	Beta		
1	(Constant)	2816.272	835.672		3.370	.003
	BAIK_2	-1.52E-05	.000	-.265	-1.489	.151
	PELIHAR3	-1.51E-04	.000	-.494	-2.778	.011

a. Dependent Variable: K_PD2

Coefficients^a

Model		Unstandardized Coefficients		Standardized Coefficients	t	Sig.
		B	Std. Error	Beta		
1	(Constant)	3004.578	848.601		3.541	.002
	PELIHAR3	-1.74E-04	.000	-.571	-3.260	.004

a. Dependent Variable: K_PD2