

ATTACHMENT I.

REALISASI EKSPOR MINYAK MENTAH INDONESIA

TAHUN 1990/1991 - 1991/1992

KETERANGAN	1990/1991 RIBU BBL	1991/1992 RIBU BBL
A. PERTAMINA :		
Dari Prod. Sendiri		
- Minyak Mentah	6.219,47	4.945,00
Dari Kontraktor		
- Minyak Mentah	108.037,13	114.641,00
- Arun Condensate	24.097,38	16.235,00
T O T A L (A)	138.353,98	135.821,00
B. KONTRAKTOR :		
- Minyak Mentah KPS	151.299,67	163.839,00
- Arun Condensate	16.067,62	11.227,00
T O T A L (B)	167.367,29	175.066,00
GRAND TOTAL (A) + (B)	305.721,27	310.887,00

ATTACHMENT I.

P E N J U A L A N N O N B B M

NO.	JENIS PRODUK	SATUAN	1990/91	1991/92	NAIK TURUN (%)
1.	Pelumas	Ribu KL	310.35	287.62	(7,32)
2.	LPG	Ribu Ton	331.21	374.47	13,08
3.	BBG	Ribu Klep	1.17	4.15	254,79
4.	Methanol Mix	Ribu Ton	2.32	2.08	(10,52)
5.	Aspal	Ribu Ton	457.51	497.51	(3,66)
6.	Wax	Ribu Ton	18.18	16.13	(11,26)
7.	Polytam PP	Ribu Ton	6.25	6.09	(2,99)
8.	PTA	Ribu Ton	108.22	75.56	(30,18)
9.	P. Cokes	Ribu Ton	57.98	73.21	21,96
10.	Minarex	Ribu KL	2.24	2.04	(4,69)
11.	SMT/LAWS	Ribu KL	17.36	9.09	(47,64)
12.	SBP	Ribu KL	21.37	16.52	(22,70)
13.	SGO	Ribu KL	0.56	0.34	(39,25)
14.	Methanol	Ribu Ton	205.57	43.80	(93,29)
15.	Paraffinic	Ribu KL	-	0.96	0,00
16.	Minasol M.	Ribu Ton	1.44	12.44	779,36
17.	Kimia Pertanian	Ribu KL	0.30	0.17	(43,58)
18.	Pertasol CA/CB	Ribu Ton	-	3.84	0,00

LIST OF CONTRACTS

AS OF JANUARY, 1991

NO.	CONTRACT	AREA	KIND OF CONTRACT	OPERATION	REMARKS
01	ASAMERA OIL (IND.) LTD OPR. ASAMERA OIL (IND.) LTD.	ON NORTH SUMATRA	PSC EXT.	ASAMERA OIL (IND.) LTD	PRODUCING
02	ASAMERA (OVERSEAS) LTD OPR. ASAMERA (JASSI) LTD	ON CORRIDOR BLOCK SOUTH SUMATRA	PSC	ASAMERA (OVERSEAS) LTD. BOW VALLEY IND. TR (CORRIDOR) LTD. PERTAMINA	
03	ASAMERA OIL (IND.) LTD OPR. MOBIL OIL IND. INC.	ON NORTH SUMATRA B BLOCK	PSC. EXT.	MOBIL OIL IND. INC. PRODUCTS	PRODUCING
04	ASAMERA (JAMBI EOR) LTD	ON JAMBI	EOR	ASAMERA (JAMBI EOR) LTD. PERTAMINA	JOB
05	ATLANTIC RICHFIELD BALI NORTH INC LTD OPR. A R II	OFF KANGEAN BLOCK EAST JAVA SEA	PSC	A R. BALI NORTH INC BRIT OIL (ALPHA) LTD.	
06	ASEM ASEM SHELL B.V OPR. SHELL B.V	ON OFF ASEM ASEM SOUTH KALIMANTAN	PSC.	ASEM ASEM SHELL B.V	
07	AMOCO (INDONESIA) JAVA SEA PETROLEUM COMPANY OPR. AMOCO (INDONESIA) JAVA PETROLEUM CO	OFF. NORTH EAST BLOCK V JAVA SEA	PSC.	AMOCO (INDONESIA) JAVA SEA PETROLEUM COMPANY	
08	BRIT OIL INDONESIA LTD OPR. BRIT OIL INDONESIA LTD	ON OFF SULAWESI EAST SULAWESI	PSC.	BRIT OIL INDONESIA LTD.	
09	CANADA NORTHWEST ENERGY (SOUTH SUMATRA) LTD OPR. PERTAMINA + CANADA NORTHWEST ENERGY LTD	ON OGAN KOMERING SOUTH SUMATRA	JOA	CANADA NORTHWEST ENERGY (SOUTH SUMATRA)	JOB
10.	CHEVRON NATUNA INC TEXACO NATUNA INC OPR. AMOSEAS IND. INC.	OFF NATUNA BLOCK C	PSC.	CHEVRON NATUNA INC. TEXACO NATUNA INC.	
11	CHEVRON PACIFIC EXPLORATION INC. TEXACO EXPLORATION MISOOL INC. OPR. AMOSEAS	ON OFF MISOOL IRIAN JAYA	PSC.	CHEVRON PACIFIC EXPLORATION INC. TEXACO EXPLORATION MISOOL INC.	
12	CONTINENTAL OIL COY OPR. CONOCO INDONESIA INC.	OFF NATUNA SEA BLOCK B.	PSC. EXT.	CONOCO OF INDONESIA TEXACO BLOCK B S.C.S. INC. KUPAN INTERNATIONAL COY INPEX NATUNA	PRODUCING
13	CONOCO IRIAN JAYA OPR. CONOCO INDONESIA INC.	OFF. SOUTH KEPALA BURUNG	JOA	PERTAMINA CONOCO IRIAN JAYA INPEX BINTUNI LTD. MOECO BINTUNI LTD. ATLANTIC RICHFIELD IRIJA INC.	
14	CONOCO WARIM LTD. OPR. CONOCO INDONESIA INC.	ON WARIM IRIAN JAYA	PSC	CONOCO WARIM LTD. OVERSEAS PETROLEUM & INVESTMENT CORP (OPIG) KYUNG IN ENERGY COY. LTD. KORPEA PETROLEUM DEV. CORP. (PEDCO) NMC IRIAN JAYA OIL EXPLORATION CO. LTD. DU PONT E & P NO. 3 BV	
15	CONOCO BUTON LTD SHELL BUTON B.V OPR. CONOCO INDONESIA INC.	ON OFF. BUTON SOUTHEAST SULAWESI	PSC	CONOCO BUTON LTD. BUTON SHELL B.V ENTERPRISE OIL BUTON LIMITED	
16	CALTEX PACIFIC INDONESIA PT OPR. PT CPI	ON CENTRAL SUMATRA RIAU BLOCK	PSC	PT CALTEX PACIFIC INDONESIA CHEVRON CORPORATION	
17	CALIFORNIA ASIATIC OIL COY TEXACO OVERSEAS PETROLEUM COY OPR. PT CPI	ON CENTRAL SUMATRA MOUNTAIN FRONT & KUANTAN BLOCK	PSC	CALIFORNIA ASIATIC OIL COY TEXACO OVERSEAS PETROLEUM COY PERTAMINA	
18	CALIFORNIA ASIATIC OIL COY TEXACO OVERSEAS PETROLEUM COY	ROKAN BLOCK	COW	CALIFORNIA ASIATIC OIL TEXACO OVERSEAS PETROLEUM COY	
19	CHEVRON INTERNATIONAL LTD TEXACO EXPLORATION MANUI INC. OPR. AMOSEAS INDONESIA INC.	ON OFF MANUI BLOCK SOUTH EAST SULAWESI	PSC EXT.	CHEVRON INT. LTD. TEXACO EXPLORATION MANUI INC.	PRODUCING
20	CALIFORNIA ASIATIC OIL COY TEXACO OVERSEAS PETROLEUM COY OPR. PT. CPI	ON CENTRAL SUMATRA	PSC	CALIFORNIA ASIATIC OIL COASTAL PLAINS & PK. BARU	PRODUCING
21.	CHEVRON INT'L SOE LTD. TEXACO EXPLORATION SOE INC OPR. AMOSEAS	ON OFF SOE EAST NUSA TENGGARA	PSC	CHEVRON INT'L SOE LTD TEXACO EXPLORATION SOE INC.	

LIST OF CONTRACTS

AS OF JANUARY, 1991

NO.	CONTRACT	AREA	KIND OF CONTRACT	OPERATION	REMARKS
22	DIAMOND SHAMROCK NETHERLANDS PETROLEUM B.V. PHONET ENERGY LTD OPR. MAXUS ARU INC	ON OFF ARU MALUKU IRIAN JAYA	PSC	MAXUS ARU INC UNIVERSE OIL INDONESIA INC. TÜRKIYE PERÖLLELERİ ANONİM ORTAKLIĞI PT. DEMINEX BUNYU OMY (INDONESIA) EXPLORATION GESELLSCHAFT MBH	
23	ENH OIL COMPANY LTD OPR. ENH OIL COY LTD	ON LEMATANG BLOCK SOUTH SUMATRA	PSC	ENH OIL COY LTD. BONHAM (LEMATANG) LTD	
24	ENTERPRISE OIL EXPLORATION LTD. FINA EXPLORATION BENGKULU SA. BG. BENGKULU	ON BENGKULU BLOCK SOUTH SUMATERA	PSC	ENTERPRISE OIL EXPLORATION LTD. FINA EXPLORATION BENGKULU SA / BG. BENGKULU	
25	ESSO MUSI INC. MOBIL BUSI INC OPR. PERTAMINA + PT. STARVAC INDONESIA	ON MUSI - KLINGI SOUTH SUMATRA	JOA	PERTAMINA ESSO MUSI INC. MOBIL BUSI INC	JOB
26	ESSO RAWAS LTD. MOBIL BANGKO INC OPR. PERTAMINA + PTSI	ON SURULANGUM BLOCK SOUTH SUMATRA	JOA	PERTAMINA ESSO RAWAS LTD. MOBIL BANGKO INC.	JOB
27	ESSO EXPLORATION & PRODUCTION NATUNA INC. EUM OPR. ESSO EXPLORATION & PRODUCTION NATUNA INC	OFF NATUNA D. ALPHA BLOCK	JOA	ESSO EXPLORATION & PRODUCTION NATUNA PERTAMINA	
28	ESSO JAVA INC. MOBIL REMBANG INC OPR. PERTAMINA + PT. STARVAC INDONESIA	ON GUNDIH BLOCK EAST JAVA	JOA EXT	PERTAMINA ESSO JAVA INC. MOBIL REMBANG INC	JOB
29	ENTERPRISE (PANAI) LTD. GAS COUNCIL EXPLORATION (PANAI) LTD OPR. ENTERPRISE OIL (PANAI) LTD	ON PANAI BLOCK RIAU	PSC	ENTERPRISE OIL (PANAI) LTD GAS COUNCIL EXPLORATION (PANAI) LTD	
30	ELF AQUITANE INDONESIA OPR. PERTAMINA + ELF AQUITANE INDONESIA	ON JAMBI MERANG. JAMBI	JOA	ELF AQUITANE IND. JAMBI PERTAMINA SAGA PETROLEUM IND. JAMBIAS	JOB
31	GULF & WESTERN INDUSTRIES OPR. AGL PETROLEUM (SERAM) LIMITED	ON OFF CERAM. BULA. AMBON, BURU, SULAWESI	PSC	AGL PETROLEUM (SERAM) KUFPEC (INDONESIA) LTD CANADANORTHWEST ENERGY SERAM RTD (SERAM) LIMITED TRICENTROL EXPLORATION OVERSEAS LTD ATLANTIC RICHFIELD SERAM LTD.	SPECIAL AGL 100% PROD.
32	GOLDEN SPIKE INDONESIA LTD OPR. PERTAMINA + GOLDEN SPIKE IND. LTD	ON RAJA AND PEDOPO BLOCK, SOUTH SUMATRA	JOA	GOLDEN SPIKE INDONESIA PERTAMINA PT. KODEL ENRON OIL SUMATERA LTD.	
33	GULFCAN SUMATRA LIMITED OPR. GULFCAN SUMATRA LIMITED	ON SOUTH JAMBI, JAMBI	JOA	GULFCAN SUMATRA LTD PERTAMINA	
34	HUBBAY OIL INTERNATIONAL LTD. HUSKY OIL (MADURA) STRAIT INC OPR. PERTAMINA + PTSI	ON OFF MADURA STR	PSC	PENNZOIL ASIATIC INC. HUSKY OIL (MADURA) LTD LASMO MADURA LTD MOBIL MADURA STRAIT	
35	HUSKY OIL (LIMAU) LTD OPR. HUSKY OIL (LIMAU) LTD	ON LIMAU BLOCK SOUTH SUMATRA	EOR	(COORDINATION BY PERTAMINA OIT EP.)	
36	HUFFCO KAHAYAN INC. PT. SARIMBI MENUR SARI OPR. HUFFCO KAHAYAN, INC.	ON KAHAYAN BLOCK SOUTH KALIMANTAN	PSC	HUFFCO KAHAYAN, INC.	
37	HUFFCO BRANTAS INC. PT. SARIMBI MENUR SARI OPR. HUFFCO BRANTAS INC.	ON OFF BRANTAS BLOCK EAST JAVA	PSC	HUFFCO BRANTAS, INC.	
38	HUMPUSS PATRAGAS PT OPR. HUMPUSS PATRAGAS PT	ON CENTRAL EAST JAVA	TAC	(COORDINATION BY PERTAMINA DIT. EP.)	
39	INDONESIA GULF OIL COY OPR. BP PETROLEUM DEV. OF INDONESIA LTD	ON OFF WEST SULAWESI	PSC	BP. PETROL DEV. OF IND. INDONESIA GULF OIL COY	PRODUCING
40	INDEPENDENT INDONESIA AMERICAN PETROLEUM COY OPR. MAXUS SOUTH EAST SUMATRA	OFF SOUTH EAST SUMATRA	PSC	MAXUS S E S INC DEMINEX SUMATRA OEL GMBH REPSOL (SUMATRA) EXPL. & PROD. INPEX SUMATRA LTD. C. ITOH ENERGY DEV. COY WARRIOR OIL (INDONESIA) LTD. TCR SUMATRA LTD BP PETROL DEV. (S.E.S) LTD. LASMO SUMATRA LTD	PRODUCING
41	INDONESIA PETROL (UA) LTD OPR. INPEX ACEH LTD	OFF NORTH ACEH	PSC	INPEX ACEH LTD.	

LIST OF CONTRACTS

AS OF JANUARY, 1991

NO.	CONTRACT	AREA	KIND OF CONTRACT	OPERATION	REMARKS
42.	INDEPENDENT INDOONESIAN AMERICAN PETROLEUM COY OPR : ARII	OFF NORTHWEST JAVA SEA	PSC EXT.	ARII MAXUS NORTHWEST JAVA INC. CITOH ENERGY DEV. COY INPEX JAWA LTD. WARRIOR OIL COY. REPSOL (JAWA) EXP & PROD. LTD. DEMINEK JAWA OEL GMBH.	PRODUCING
43.	INDONESIAN PETROLEUM LTD. OPR : INPEX PETROLEUM LTD	OFF NORTH EAST JAVA SEA BLOCK VI	PSC	INPEX OFFSHORE MADURA LTD.	
44.	JAPEX INDONESIA LTD OPR : TOTAL INDOONESIE	OFF MAHAKAM	PSC	JAPEX INDONESIA LTD. TOTAL INDOONESIE	PRODUCING
45.	JAPAN PETROLEUM EXPLORATION CO. LTD OPR. PERTAMINA + JAPEX	ON OFF PANTAI GEBANG NORTH SUMATRA	JOA	JAPEX NORTH SUMATRA LTD. PERTAMINA	JOBI
46.	KODECO ENERGY COY OPR : KODECO ENERGY COY	OFF WEST MADURA EAST JAVA	JOA	KODECO ENERGY COY PERTAMINA KOREA PETROLEUM DEV. CORP. (PEDCO)	
47.	KONOUR PETROLEUM S A OPR : HUBBAY OIL INT. LTD.	OFF MALAKA STRAIT	PSC	HUBBAY OIL (MALAKCA STRAIT) LTD. TCR MALAKCA STRAIT LTD ARCO PAN OCEAN HOME OIL MALAKCA STRAIT LTD. KONOUR PETROLEUM S A BP PETROLEUM DEV (MALAKCA STRAIT) LTD LASMO MALAKCA LTD.	PRODUCING
48.	KATY TEWEH PETROLEUM COY UNION OIL TEWEH INC OPR : UNOCOAL TEWEH INC	ON TEWEH, CENTRAL KALIMANTAN	PSC	KATY TEWEH PETROLEUM COY. UNOCOAL INTERNATIONAL INPEX TEWEH LTD.	
49.	KERR MCGEE OF INDONESIA INC / QUINTANA INDONESIA LTD SAMEKAN OIL INDONESIA INC WAINOCO INDONESIA INC OPR : ENTERPRISE OIL (BAWEAN) LTD	ON OFF BAWEAN BLOCK EAST JAVA SEA	PSC	ENTERPRISE OIL (BAWEAN) LTD SAMEKAN OIL OF INDONESIA CORP. KUFPEC (JAVA) LIMITED	PRODUCING
50.	MOBIL PEUSANGAN INC OPR : MOBIL EXPLORATION (PEUSANGAN) LTD.	OFF NORTH SUMATRA PEUSANGAN BLOCK	JOA	PERTAMINA MOBIL EXPL. (PEUSANGAN) LTD.	
51.	MOBIL PASE INC OPR : MOBIL OIL INDONESIA INC	ON PASE BLOCK ACEH	PSC	MOBIL PASE INC.	
52.	MOBIL MAKASSAR INC OPR : MOBIL OIL INDONESIA	OFF MAKASSAR STRAIT BLOCK A AND B	PSC	MOBIL MAKASSAR, INC.	
53.	MARATHON PETROLEUM NATUNA LTD OPR : AMOSEAS INDONESIA INC	OFF NATUNA BLOCK D	PSC	MARATHON PETROLEUM NATUNA LTD. AMERADA HESS CORP. OF INDONESIA HUBBAY OIL (NATUNA) LTD TCR NATUNA AG NATUNA GULF OIL LTD.	
54.	MOBIL OIL INDONESIA INC OPR : MOBIL EXPLORATION INDONESIA	ON OFF NORTH SUMATRA & SUMATRA EXT.	PSC	MOBIL OIL INDONESIA INC	
55.	MADURA SHELL B V OPR : PERTAMINA + SHELL B V	ON OFF MADURA BLOCK JAVA	JOA	PERTAMINA MADURA SHELL B V	
56.	MOBIL EXPLORATION LENGGURU EAST INC. BHP PETROLEUM (EAST LENGGURU) INC OPR : MOBIL EXPLORATION LENGGURU EAST INC.	ONE EAST LENGGURU IRIAN JAYA	PSC	MOBIL EXPLORATION LENGGURU EAST INC. BHP PETROLEUM (EAST LENGGURU) INC.	
57.	MOBIL EXPLORATION LENGGURU WEST INC / BHP PETROLEUM (WEST LENGGURU) INC OPR : MOBIL EXPLORATION LENGGURU WEST INC.	ON OFF WEST LENGGURU, IRIAN JAYA	PSC	MOBIL EXPLORATION LENGGURU WEST INC. BHP PETROLEUM (EAST LENGGURU) INC.	
58.	MOBIL EXPLORATION BOMBERAI INC / BHP PETROLEUM (BOMBERAI) INC OPR : MOBIL OIL INDONESIA INC	ON BABO, IRIAN JAYA	PSC	MOBIL EXPLORATION BOMBERAI INC. BHP PETROLEUM (BOMBERAI) LTD.	
59.	MAXUS FIFI ZAITUN INC. INDONESIA PETROLEUM LTD FIFI ZAITUN SHELL BV REPSOL EXPLORATION FIFI ZAITUN SA CIECOSES INC. WARRIOR BERANI ORYX INDONESIA (FIFI ZAITUN) COY / LASMO FIFI ZAITUN LTD TCR FIFI LTD OPR : MAXUS FIFI ZAITUN INC.	OFF FIFI AND ZAITUN BLOCK, JAWA SEA	JOA	MAXUS FIFI ZAITUN INC INDONESIA PETROLEUM LTD. PT DEMINEK INDONESIA FIFI ZAITUN SHELL B V REPSOL EXPLORATION FIFI ZAITUN SA CIECO SES INC WARRIOR BERANI ORYX IND. (FIFI ZAITUN) COY. LASMO FIFI ZAITUN LTD. TCR FIFI LTD.	

LIST OF CONTRACTS

AS OF JANUARY, 1991

NO.	CONTRACT	AREA	KIND OF CONTRACT	OPERATION	REMARKS
60	OCCIDENTAL BERAIU OF INDONESIA INC OPR OCCIDENTAL BERAIU OF INDONESIA INC	OFF BERAIU KEPALA BURUNG	PSC	OCCIDENTAL BERAIU IND INC NIPPON OIL EXPL. (BERAIU) LTD. SUN OIL BERAIU IND LTD.	
61	PHILLIPS PETROLEUM COY INDONESIA TENNECO ILO INC OPR MARATHON PETROLEUM INDONESIA LTD	OFF NATUNA SEA KAKAP BLOCK	PSC	PERTAMINA MARATHON PETROLEUM IND LTD PHILLIPS PETROLEUM IND. INC. HUBBAY OIL (KAKAP) LTD BP PETROL DEV. (KAKAP) LTD. LASMO (KAKAP) LTD.	PRODUCING
62	PETROCORP EXPLORATION INDONESIA LTD OPR PETROCORP EXPL IND LTD	ON BANDAR JAYA BLOCK LAMPUNG, SOUTH SUMATRA	PSC	PETROCORP EXPL IND LTD	PRODUCING
63	PETROCORP EXPLORATION MARATUA LTD OPR PETROCORP EXPLORATION MARATUA LTD	ON OFF MARATUA EAST KALIMANTAN	PSC	PETROCORP EXPL MARATUA LTD.	
64	PETROCORP EXPLORATION KAMPAR KANAN LTD OPR PETROCORP EXPL KAMPAR KANAN LTD	ON KAMPAR KANAN BLOCK WEST SUMATRA	PSC	PETROCORP EXPL KAMPAR KANAN LTD.	
65	REPSOL INDONESIA PT OPR TESORO INDONESIA PETROLEUM	ON EAST KALIMANTAN TARAKAN SAMBOJA	TAC EXT	TESORO INDONESIA PETROLEUM	PRODUCING
66	REPSOL INDONESIA LTD OPR ASAMIRA SOUTH SUMATRA LTD	ON TEMPINO AREA SOUTH SUMATRA	TAC EXT	ASAMIRA (SG) LTD BOW VALLEY EXPL	PRODUCING
67	REPSOL EXPLORATION S.A LASMO TANGSELANG LTD OPR PERTAMINA + REPSOL	ON OFF TANGERANG WEST JAVA	JOA	REPSOL EXPL IND SA LASMO INDONESIA PERTAMINA	(JOB)
68	STANVAC INDONESIA PT OPR PT STANVAC INDONESIA	ON BARISAN RUMAU BLOCK MOBIL AIRLIMAU	PSC	ESSO AIRSENDA INC	PRODUCING
69	STANVAC INDONESIA PT OPR PT STANVAC INDONESIA	ON CENTRAL SOUTH SUMATRA	COW EXT	STANVAC INDONESIA LTD.	PRODUCING
70	SCEPTRE RESOURCES BUNYU OPR SCEPTRE RESOURCES LTD	OFF BUNYU EAST KALIMANTAN	PSC	SCEPTRE RESOURCES BUNYU SANTA FEE ENERGY CO. OF. IND HADSON BUNYU BV HAMILTON OIL (BUNYU) CO. PEKO BUNYU PTY. LTD MENT LTD BP PETROLEUM DEV. LTD	
71	SUMATERA GULF OIL LTD OPR AMOSEAS INDONESIA	OFF NATUNA BLOCK 'A'	PSC	PEKO BUNYU PTY. LTD SUMATERA GULF OIL LTD KUWAIT FOREIGN PETROLEUM EXPLORATION COY (KSC)	PRODUCING
72	SOUTHERN CROSS (TANJUNG) LTD BOYHAW (TANJUNG) LTD OPR SOUTHERN CROSS (TANJUNG) LTD	ON TANJUNG RAYA SOUTH KALIMANTAN	EOR	(COORDINATION BY PERTAMINA DIT. EPI)	
73	TCR LANGSA LTD OPR PERTAMINA + TCR LANGSA LTD	OFF LANGSA BLOCK SUMATERA SELATAN	JOA	PERTAMINA TCR LANGSA LTD.	(JOB)
74	TOTAL TENGAH INDONESIA PETROLEUM LTD OPR PERTAMINA + TOTAL INDONESIE SUMATERA LTD	ON TENGAH BLOCK EAST KALIMANTAN	JOA	PERTAMINA TOTAL INDONESIE INPEXAGEH	(JOB)
75	TOTAL WEST NATUNA OPR TOTAL WEST NATUNA	OFF NATUNA BLOCK	PSC	TOTAL WEST NATUNA RIAU	
76	TREND ENERGY KALIMANTAN LTD OPR TRIDENT PETROLEUM (KALIMANTAN) LTD	ON SOUTH BARITO BLOCK 'B'	PSC	SUN INDONESIA OIL CO TUSKEN (INDONESIA) KALIMANTAN LTD TRIDENT PETROLEUM (KALIMANTAN) LTD.	
77	TREND KELAPA BURUNG LTD OPR PERTAMINA + TREND KEPALA BURUNG LTD.	ON OFF SALAWATI IRIAN JAYA	JOA	PERTAMINA TREND KEPALA BURUNG LTD.	(JOB)
78	TESORO TARAKAN PETROLEUM COY OPR TESORO TARAKAN PETROLEUM COMPANY	ON TARAKAN, EAST KALIMANTAN	PSC	TESORO TARAKAN PETROLEUM COY	(PRODUCING)
79	TREND EXPLORATION LTD OPR PETROLEUM TREND CORP	ON KEP. BURUNG EXCEPT KLAMONO & SORONG IRIAN	PSC	mitsui oil EXPL. CO. LTD. EURAFREP INC. SOUTHERN CROSS LTD TREND INTERNATIONAL LTD TILASSA CORP. S.A C. ITOH ENERGY DEV. CO. LTD. MAPCO INDONESIA INC.	(PRODUCING)

LIST OF CONTRACTS

AS OF JANUARY, 1991

NO.	CONTRACT	AREA	KIND OF CONTRACT	OPERATION	REMARKS
80	TREND EAST JAVA LIMITED OPR - PERTAMINA + TREND	ON TUBAN BLOCK EAST JAVA	JOA	PERTAMINA TREND EAST JAVA LTD TOTAL TJUBAN ENSEARCH FAR EAST LTD RSR PETROLEUM (TUBAN) LTD	(JOB)
81	TREND JAVA SEA LIMITED OPR - TREND/JAVA SEA LTD	OFF EAST JAVA SEA BLOCK IV	PSC	TREND JAVA SEA LTD	
82	TEIKOKU OIL CO. LTD OPR - PERTAMINA + TEIKOKU OIL CO. LTD	ON SEMBRANG EAST KALIMANTAN	JOA	PERTAMINA TEIKOKU OIL CO. LTD.	(JOB)
83	TOTAL LAHAT - HOME OIL LAHAT LTD SUN LAHAT INC OPR - PERTAMINA + TOTAL LAHAT	ON LAHAT BLOCK	JOA	PERTAMINA HOME OIL (LAHAT) LTD SUN LAHAT INC. TOTAL LAHAT	PRODUCING
84	UNION TEXAS (SOUTH EAST ASIA) INC OPR - UNION TEXAS (SOUTH EAST ASIA) INC	ON TOMORI BLOCK CENTRAL SULAWESI	PSC	UNION TEXAS (S E A) INC TEXACO TOMORI INC MAHATHON PETROLEUM TOMORI LTD ICI PETROL (TOMORI) LTD BIRIT OIL (DEVELOPMENT) LTD	PRODUCING
85	UNION OIL COY INC OPR - UNOCAL INDONESIA INC OPR - ARIIT	ON OFF EAST KALIMANTAN WEST PASIR	PSC	UNOCAL INDONESIA INC	JOB PRODUCING
86	ULTRAMAR INDIU CORPORATION OPR - ULTRAMAR INDIU CORP	ON HUNTU BLOCK EAST KALIMANTAN	PSC	ULTRAMAR INDIU CORP.	
87	VIRGINIA INTERNATIONAL CO HOY M. AND IRIGION INC OPR - VIRGINIA INDONESIA COMPANY	ON EAST KALIMANTAN SANGA SANGA BLOCK	PSC EXT PSC	OPIC OIL JV INC. OPIC OIL HOUSTON INC VIRGINIA INTERNATIONAL COY UNIVERSE JAPAN VIRGINIA INDONESIA COY UNION TEXAS EAST KALIMANTAN LTD. ULTRAMAR INDONESIA LTD.	

NOTE

PRODUCTION SHARING CONTRACT	56 CONTRACTS			
UNIT OPERATIONAL ARRANGEMENTS	21 CONTRACTS	(16 CONTRACTS JOB)		
CONTRACT OF WORK	2 CONTRACTS			
TECHNICAL ASSISTANCE CONTRACT	3 CONTRACTS			
ENHANCED OIL RECOVERY	3 CONTRACTS			
TOTAL	87 CONTRACTS			
PRODUCING	24 CONTRACTS AREA	(PSC) : 18 CONTRACTS		
		(JOA) : 2 CONTRACTS		
		(COW) : 2 CONTRACTS		
		(TAC) : 2 CONTRACTS		
OPERATOR	53 FOREIGN OIL COMPANIES			

ATTACHMENT III

**REKAPITULASI JUMLAH PEGAWAI PERTAMINA TAHUN 1989 - 1993
PER FUNGSI POSISI : 01 APRIL**

NO	FUNGSI	TAHUN : 1989				TAHUN : 1990				TAHUN : 1991				TAHUN : 1992				TAHUN : 1993			
		PIMP	BIASA	JML	JML	PIMP	BIASA	JML	JML	PIMP	BIASA	JML	JML	PIMP	BIASA	JML	JML	PIMP	BIASA	JML	JML
1	DIR *)	21	15	36	22	13	35	37	25	12	37	29	12	41	37	29	37	10	47	47	
2	EKSPL & PROD	1.320	5.363	6.683	1.502	5.227	6.729	6.711	1.608	5.103	6.711	1.784	4.819	6.603	6.603	1.849	1.849	4.545	6.394	6.394	
3	PENGOLAHAN	1.458	7.235	8.693	1.543	7.184	8.727	8.732	1.718	7.014	8.732	2.139	6.869	9.008	9.008	2.174	2.174	7.119	9.293	9.293	
4	PPDN	697	7.398	8.095	798	7.303	8.101	8.028	913	7.115	8.028	1.189	6.966	8.155	8.155	1.342	1.342	6.904	8.246	8.246	
5	PKK	2.309	6.024	8.333	2.358	5.848	8.206	8.082	2.483	5.599	8.082	2.744	5.174	7.918	7.918	2.758	2.758	4.859	7.617	7.617	
6	KEUANGAN	610	1.058	1.668	623	1.056	1.679	1.688	682	1.006	1.688	755	1.000	1.755	1.755	861	861	1.012	1.873	1.873	
7	UMUM	2.169	9.549	11.718	2.234	9.131	11.365	11.279	2.554	8.725	11.279	2.997	8.069	11.066	11.066	3.265	3.265	7.804	11.069	11.069	
8	INSP	155	28	183	200	27	227	224	199	25	224	214	26	240	240	222	222	29	251	251	
9	B.P.P.K.A.	247	111	358	251	100	351	344	252	92	344	297	78	375	375	320	320	77	397	397	
10	PKL.N.	13	-	13	16	-	16	17	17	-	17	18	-	18	18	20	20	-	20	20	
11	PROYEK 2	90	26	116	77	24	101	103	83	20	103	227	37	264	264	235	235	98	303	303	
	JUMLAH (1-11)	9.089	36.807	45.896	9.624	35.913	45.537	45.245	10.534	34.711	45.245	12.393	33.050	45.443	45.443	13.063	13.063	32.457	45.540	45.540	
12	PERBANT B.P.	33	29	62	34	28	62	63	36	27	63	48	13	61	61	46	46	12	54	54	
	JUMLAH (1-12)	9.122	36.836	45.958	9.658	35.941	45.599	45.308	10.570	34.738	45.308	12.441	33.063	45.504	45.504	13.129	13.129	32.469	45.596	45.596	
13	PERBANT B.B.P	544	147	691	553	144	697	707	571	136	707	598	124	722	722	580	580	251	631	631	
14	PEGAWAI M.P.P.	220	190	410	263	223	486	498	269	229	498	270	277	547	547	309	309	319	624	624	
	JUMLAH	9.886	37.173	47.059	10.474	36.308	46.762	46.513	11.410	35.103	46.513	13.309	33.464	46.773	46.773	14.018	14.018	33.039	47.067	47.067	

CATATAN :

*) TERMASUK PUD, IAD & PEPAP

JUMLAH PEGAWAI PERTAMINA, KPS, A.P. & JOVENT TAHUN 1992/1993

	PEGAWAI PIMPINAN		PEGAWAI BIASA		TENAGA KONTRAK		TENAGA ASING		TOTAL	
	ACT	FC	ACT	FC	ACT	FC	ACT	FC	ACT	FC
PERTAMINA	12.048	13.129	34.253	32.469	4.125	2.416	0	0	50.426	48.014
KONTRAKTOR PRODUCTION SHARING	8.574	8.435	13.006	12.360	1.774	1.712	1.254	1.051	24.608	0
ANAK PERUSAHAAN	1.442	1.649	3.904	4.328	753	563	9	8	6.108	0
JOINT VENTURE	1.844	1.059	5.119	7.978	2.454	2.260	193	111	9.610	0
TOTAL	23.908	24.272	56.282	57.135	9.106	6.951	1.456	1.170	90.752	48.014

Keterangan :

ACT : Actual Manpower PERTAMINA (tidak termasuk Perbantuan BPP dan MPP) April 1992.

FC : Forecasted Manpower April 1993.

Jumlah karyawan PERTAMINA yang diperbantukan pada KPS, AP & JOVENT pada Tabel di samping ini.

	PIMP	BIASA	JUMLAH
KPS	118	134	252
AP	103	30	133
JOVENT	353	87	440
JUMLAH	574	251	825

REKAPITULASI PEGAWAI PERTAMINA, GOLONGAN PER LOKASI
STATUS 01 APRIL 1993

NO	LOKASI	PEGAWAI PIMPINAN																PEGAWAI BIASA										JML BESAR
		D	OP	01	02	03	04	05	06	07	08	09	JML	10	11	12	13	14	15	16	JML							
1	KANTOR PUSAT	7	38	48	131	331	532	670	869	841	961	1.212	5.640	1.282	1.347	1.299	1.872	337	1	-	6.178	11.818						
2	DAERAH SUMBAGUT	-	1	2	4	15	40	94	138	189	337	323	1.143	571	761	917	1.031	409	15	-	3.704	4.847						
3	UP II DJUMAI	-	-	1	4	7	28	59	47	180	166	238	730	258	362	862	481	303	12	-	2.298	3.028						
4	DAERAH SUMBAGSEL	-	1	2	7	28	75	167	245	284	391	487	1.687	904	1.409	1.542	1.655	752	42	-	6.304	7.991						
5	UEP III CIRESON	-	-	1	2	13	30	72	93	136	147	144	638	300	315	389	421	193	33	-	1.651	2.289						
6	UP IV CILACAP	-	-	2	10	35	65	64	129	138	138	138	601	304	293	666	521	309	11	1	2.105	2.706						
7	UP VI BALONGAN	-	-	1	-	-	-	-	-	-	-	-	1	-	-	-	-	121	-	-	121	122						
8	DAERAH KALIMANTAN	-	1	3	6	23	69	133	204	265	321	327	1.352	647	792	1.464	846	105	-	-	3.854	5.206						
9	UEP V SORONG	-	-	1	-	1	3	9	17	16	43	30	120	44	70	84	47	20	1	-	266	386						
10	UPRON III IV.V.VII DAN VIII	-	1	1	2	15	30	72	134	168	269	460	1.171	761	997	1.359	1.629	1.206	24	-	5.976	7.147						
	JUMLAH (2 - 10)	-	3	12	27	112	310	671	942	1.367	1.832	2.167	7.443	3.789	4.999	7.303	6.631	3.418	138	-	26.279	33.722						
	JUMLAH (1 - 10)	7	41	60	158	443	842	1.341	1.811	2.208	2.793	3.379	13.083	5.071	6.946	8.592	8.503	3.805	139	1	32.457	45.540						
11	PERBANTUAN BP *	-	2	1	3	3	5	6	5	2	4	15	46	4	4	4	-	-	-	-	12	58						
	JUMLAH (1 - 11)	7	43	61	161	446	847	1.347	1.816	2.210	2.797	3.394	13.129	5.075	6.350	8.595	8.503	3.805	139	1	32.469	45.598						
12	PERBANTUAN BGP **	-	8	19	24	31	71	85	65	81	122	74	580	33	45	53	94	23	3	-	251	831						
13	PEGAWAI M.P.P	-	3	8	20	37	42	45	34	40	38	42	309	72	69	101	48	9	-	-	319	628						
	JUMLAH	7	54	88	205	514	960	1.477	1.915	2.331	2.957	3.510	14.018	5.150	6.484	8.750	8.645	3.837	142	1	33.039	47.057						

* = PERBANTUAN BEBAN PERTAMINA

** = PERBANTUAN BUKAN BEBAN PERTAMINA

REKAPITULASI PEGAWAI PERTAMINA, GOLONGAN PER KELOMPOK UMUR
 STATUS 01 APRIL 1993

GOL	<21	21-26	26-31	31-36	36-41	41-46	46-51	51-56	> 56	JUMLAH
00	-	-	-	-	-	-	-	-	7	7
0P	-	-	-	-	-	-	5	31	18	54
01	-	-	-	-	-	-	14	53	21	88
02	-	-	-	-	-	2	66	115	22	205
03	-	-	-	-	3	39	211	244	17	514
04	-	-	-	-	60	213	403	280	4	960
05	-	-	-	21	251	484	433	282	6	1.477
06	-	-	41	303	376	437	482	271	5	1.915
07	-	1	261	274	365	566	529	330	5	2.331
08	-	23	644	218	328	764	671	305	4	2.957
09	-	232	92	66	552	1.247	915	400	6	3.510
10	-	31	28	182	1.099	1.605	1.348	691	6	5.180
11	-	1	131	440	1.443	2.438	1.375	642	14	6.484
12	-	26	406	1.658	1.708	2.395	1.633	905	19	8.750
13	-	27	703	1.732	2.329	2.107	1.127	615	5	8.645
14	43	621	503	956	848	480	205	107	3	3.837
15	-	-	18	46	47	18	12	1	-	142
16	-	-	-	1	-	-	-	-	-	1
JUMLAH	43	962	2.887	5.907	9.409	12.895	9.430	5.262	162	47.057

**RENCANA PENSIUN/MPP PEGAWAI PERTAMINA PER LOKASI
TAHUN 1993 - 2002, STATUS 01 APRIL 1993**

NO.	LOKASI	TAHUN											JUMLAH
		1993	1994	1995	1996	1997	1998	1999	2000	2001	2002		
1.	KANTOR PUSAT	314	394	403	336	586	491	587	578	540	557	4.786	
2.	D.SUMBAGUT	114	178	182	165	300	300	327	359	331	355	2.611	
3.	UP II DUMAI	32	28	34	32	63	60	65	89	84	115	602	
4.	D. SUMBAGSEL	145	166	202	147	319	252	307	403	341	453	2.735	
5.	UEP III CIREBON	28	56	57	50	87	79	102	106	108	141	814	
6.	UP IV CILACAP	17	31	20	20	40	35	37	50	40	62	342	
7.	UP VI BALONGAN	0	0	0	1	0	0	0	0	0	0	1	
8.	D. KALIMANTAN	89	106	97	89	178	164	198	185	164	219	1.489	
9.	UEP V SORONG	13	11	8	8	12	13	15	17	13	21	131	
10.	UPPON 3.4.5.7 & 8	109	129	133	106	230	178	210	252	234	276	1.857	
11.	PERBANTUAN BP	4	5	2	3	9	6	3	4	6	3	45	
12.	PERBANTUAN BSP	42	57	44	32	56	45	53	60	40	47	476	
TOTAL		907	1.161	1.182	989	1.880	1.623	1.934	2.103	1.901	2.249	15.899	

BP = Perbantuan Beban Pertamina.

BSP = Perbantuan Bukan Beban Pertamina

**RENCANA PENSIUN/MPP PEGAWAI PERTAMINA PER FUNGSI
TAHUN 1993 - 2002, STATUS 01 APRIL 1993**

NO.	FUNGSI	1993	1994	1995	1996	1997	1998	1999	2000	2001	2002	JUMLAH
1.	DIREKSI/PUD/PEPAPI/PLK	5	4	1	1	1	2	2	3	4	3	26
2.	EKSPLORASI&PROD	110	118	147	137	264	250	327	373	349	424	2.499
3.	PENGOLAHAN	99	128	116	135	215	180	203	255	258	323	1.912
4.	P.P.D.N	115	140	139	104	251	207	218	290	270	319	2.053
5.	P.K.K	154	225	220	179	382	336	395	399	338	376	3.004
6.	KEUANGAN	32	53	57	38	70	68	101	93	101	105	716
7.	U.M.U.M	310	388	416	319	579	483	553	569	489	606	4.712
8.	INSPEKTORAT	14	8	5	12	9	9	14	15	7	9	102
9.	B.P.P.K.A	7	18	20	14	26	25	23	30	24	18	205
10.	PWK. LUAR NEGERI	4	2	1	1	3	1	2	0	2	0	16
11.	PROYEK-PROYEK	11	15	14	14	15	11	10	12	13	15	131
	SUB TOTAL (1-11)	861	1.099	1.136	954	1.815	1.572	1.848	2.039	1.855	2.199	15.378
12.	PERSANTUAN BP	4	5	2	3	9	6	3	4	6	3	45
13.	PERSANTUAN BSP	42	57	44	32	56	45	53	60	40	47	476
	TOTAL (1 - 13)	907	1.161	1.182	989	1.880	1.623	1.904	2.103	1.901	2.249	15.899

BP = Persantuan Beban Pertamina
BSP = Persantuan Bukan Beban Pertamina

**RENCANA PENSIUN/MPP PEGAWAI PERTAMINA PER GOLONGAN
TAHUN 1993 - 2002, STATUS 01 APRIL 1993**

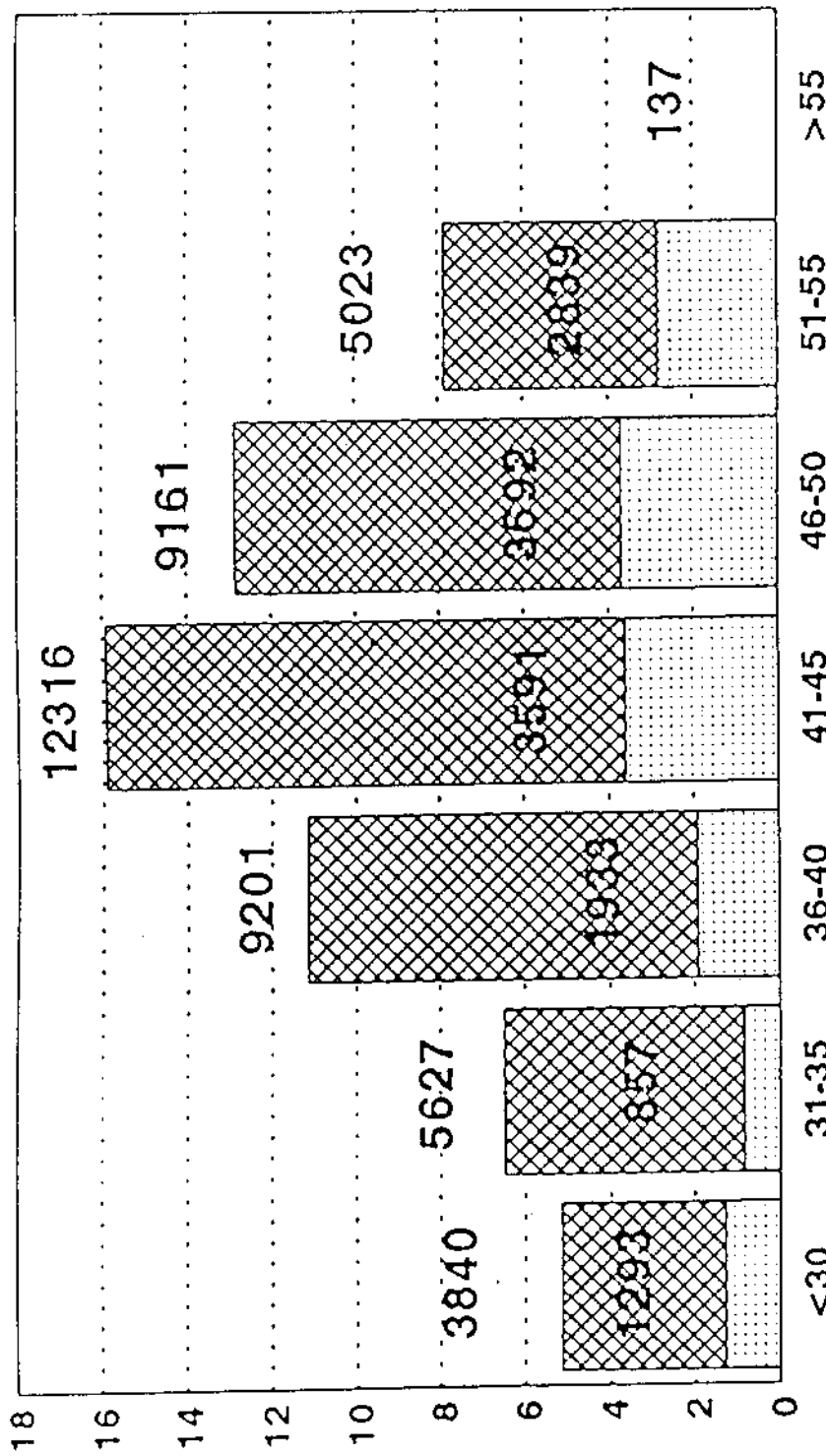
LOKASI	1993	1994	1995	1996	1997	1998	1999	2000	2001	2002	JUMLAH
OD	0	0	0	0	0	0	0	0	0	0	0
OP	18	19	5	3	4	2	0	0	0	0	51
01	21	22	12	10	4	6	2	3	0	0	80
02	36	29	26	17	25	17	17	8	7	1	183
03	56	55	42	52	68	59	44	28	29	11	444
04	51	60	44	68	84	86	83	81	76	56	689
05	53	63	63	56	63	70	94	108	90	107	767
06	40	59	62	51	95	103	110	99	86	87	792
07	52	73	77	65	104	102	95	123	109	120	920
08	63	55	66	56	120	120	164	143	128	133	1.048
09	76	86	78	68	161	144	168	236	183	244	1.444
MPP PIMP.	466	521	475	446	728	709	777	829	708	759	6.418
10	110	151	150	127	254	229	263	291	308	338	2.221
11	121	118	150	111	272	186	281	303	299	402	2.243
12	135	205	224	158	333	270	320	387	316	407	2.755
13	69	142	159	123	237	190	215	247	231	284	1.897
14	6	24	24	24	53	36	46	42	38	57	350
15	0	0	0	0	3	3	2	4	1	2	15
MPP BIASA	441	640	707	543	1152	914	1.127	1.274	1.193	1.490	9.481
TOTAL	907	1.161	1.182	989	1.880	1.623	1.904	2.103	1.901	2.249	15.899

**RENCANA PENSIUN/MPP PEGAWAI PERTAMINA PER PENDIDIKAN
TAHUN 1993 - 2002, STATUS 01 APRIL 1993**

.NO.	PENDIDIKAN	1993	1994	1995	1996	1997	1998	1999	2000	2001	2002	JUMLAH
1.	S.3	1	1	0	0	1	1	1	1	0	0	6
2.	S.2	6	8	7	9	5	8	6	3	6	5	63
3.	S.1	100	137	102	96	157	130	150	151	142	158	1.323
4.	DIPLOMA	60	97	78	102	183	175	221	243	224	236	1.619
5.	S.L.T.A.	217	263	288	249	526	527	696	849	819	1.052	5.486
6.	S.L.T.P.	191	239	245	202	370	334	364	397	334	422	3.098
7.	SD	332	416	462	331	638	448	466	459	376	376	4.304
	JUMLAH	907	1.161	1.182	989	1.880	1.623	1.904	2.103	1.901	2.249	15.899

PROFIL USIA PERSONIL PERTAMINA

1 FEBRUARI 1993

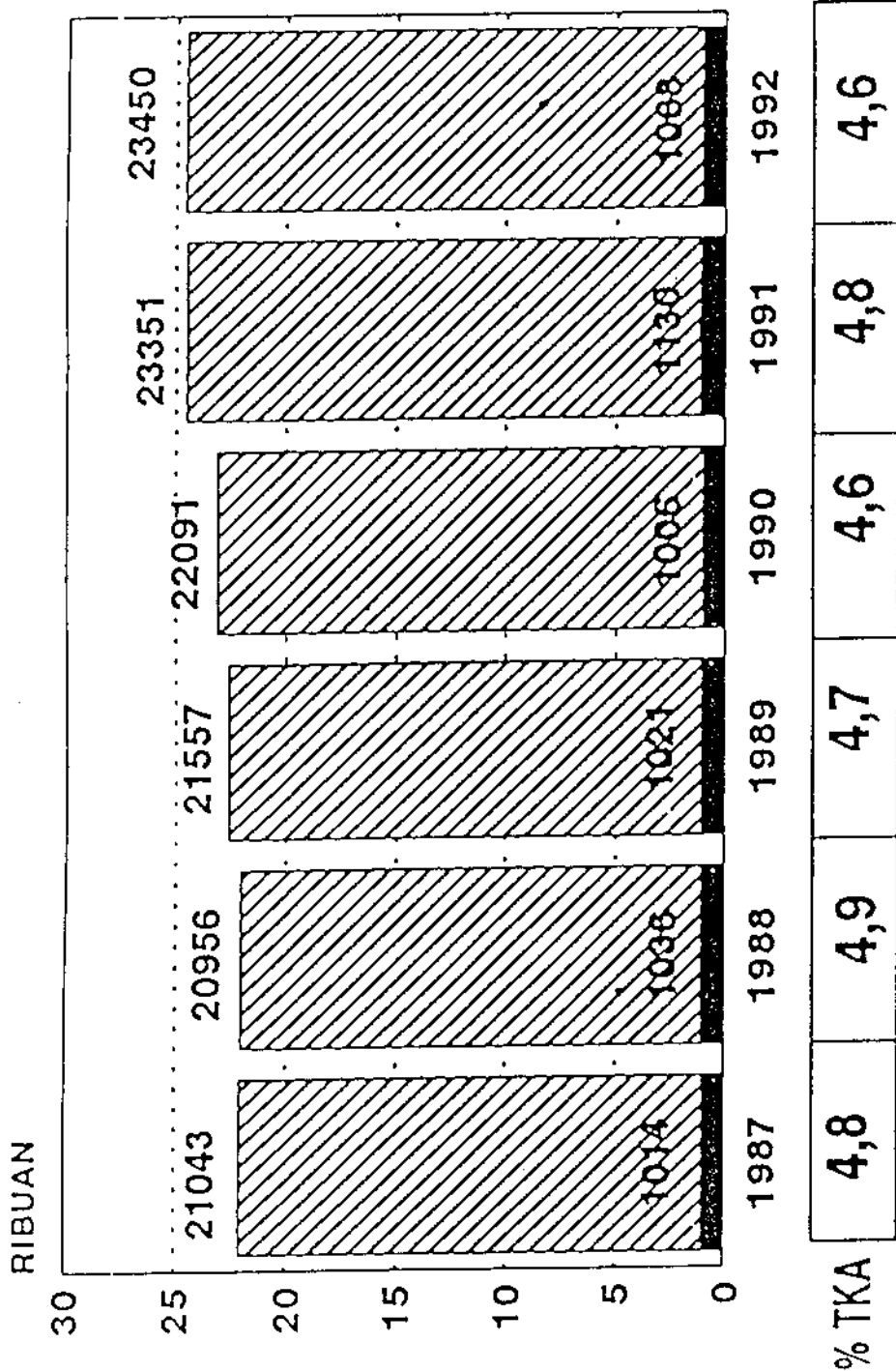


Age Group	<30	31-35	36-40	41-45	46-50	51-55	>55
% PIMPINAN	34	15	21	29	40	56	0

PIMPINAN
 BIASA

KEKUTAN PERSONIL KPS/JOB

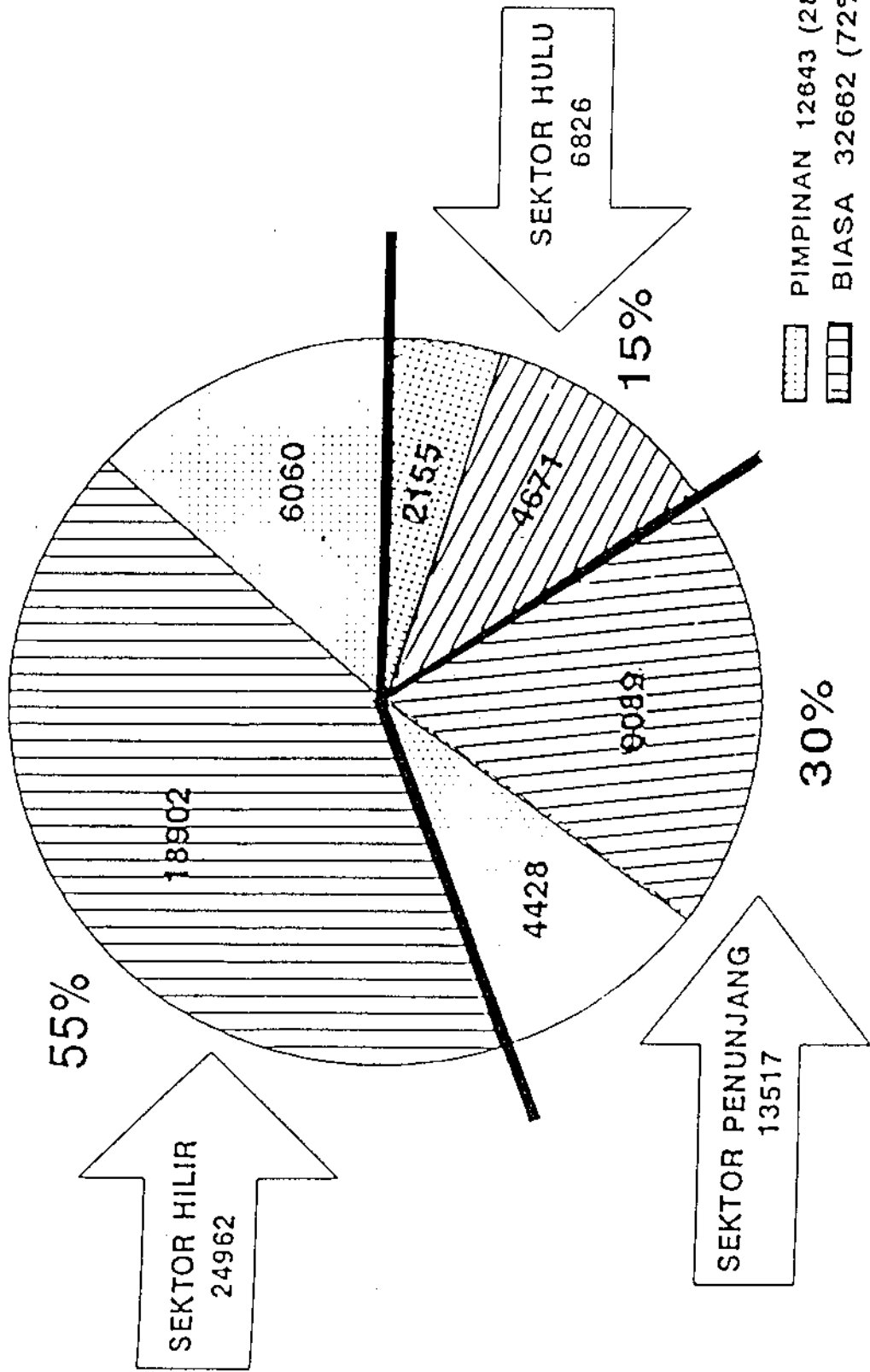
1987 - 1992



TENAGA KERJA ASING

KEKUATAN PERSONIL PERTAMINA 1 FEBRUARI 1993

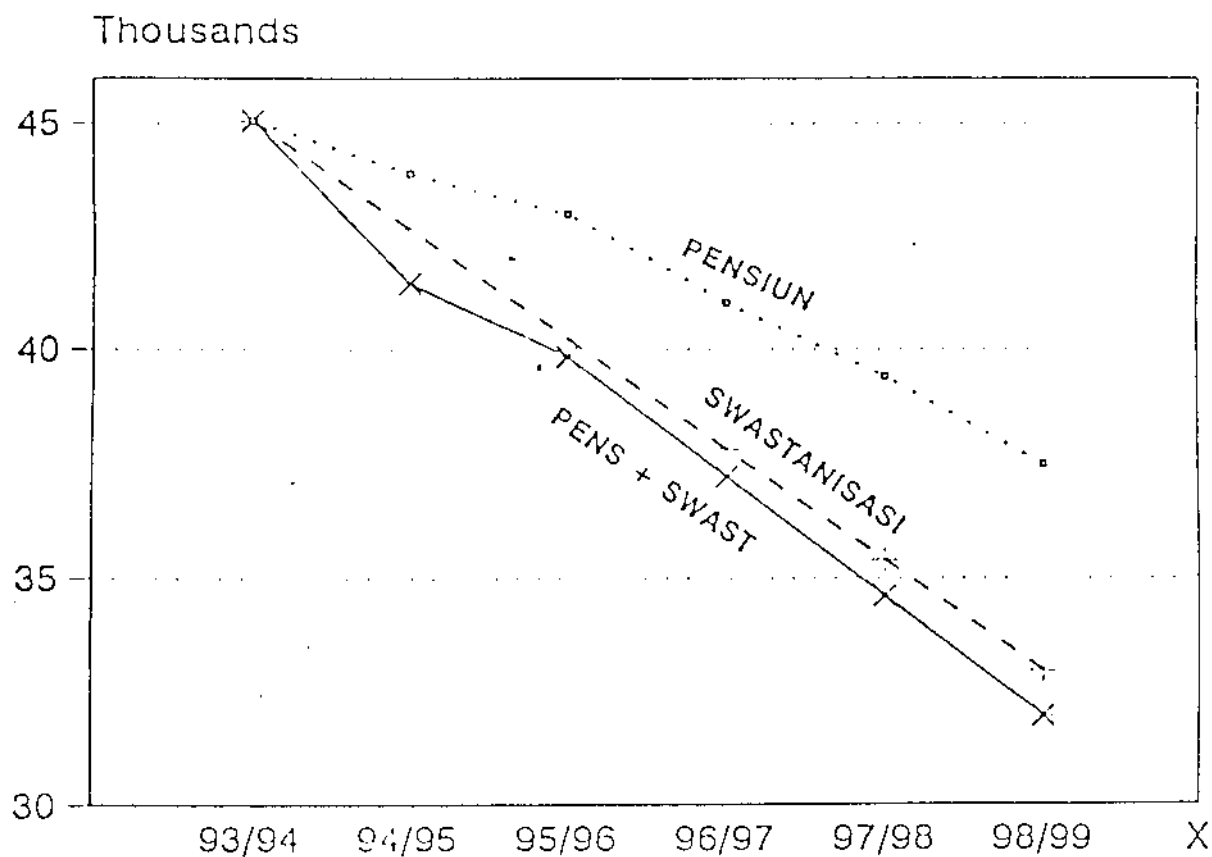
TOTAL 45305



Legend:
PIMPINAN 12643 (28%)
BIASA 32662 (72%)

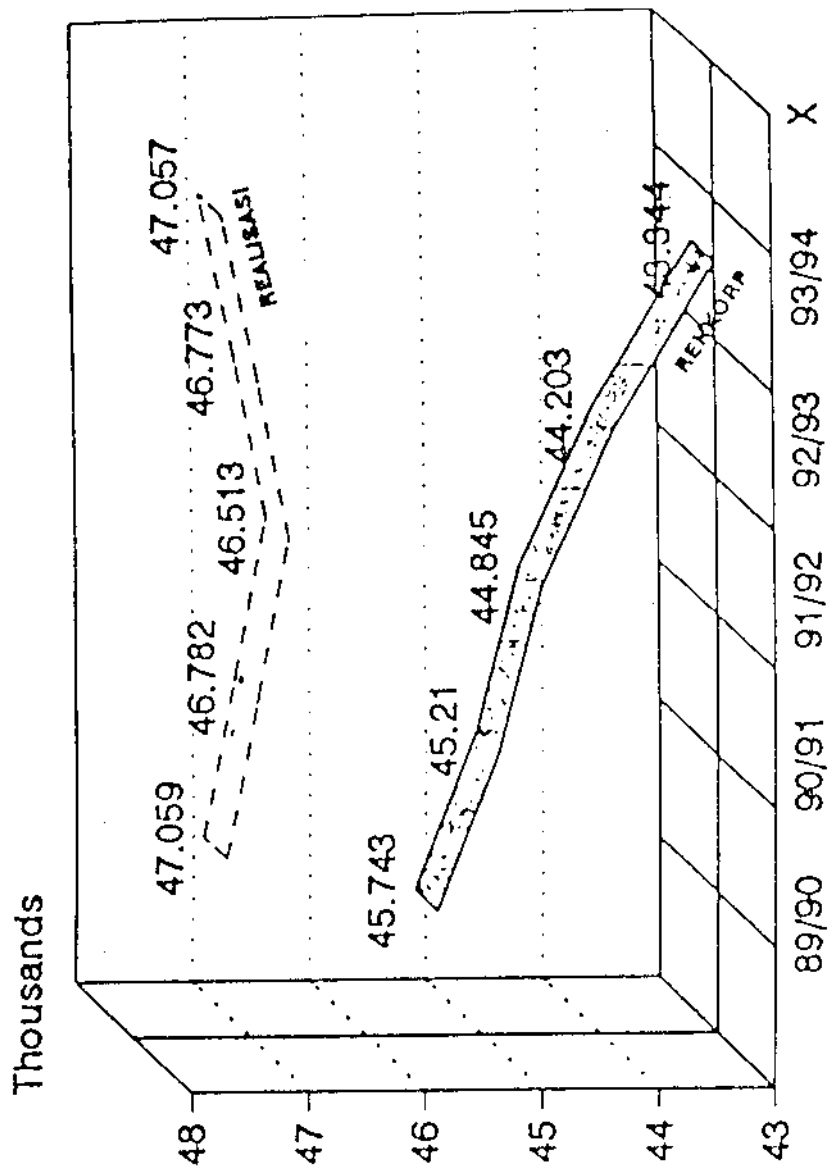
TREND PENURUNAN JUMLAH PEGAWAI SECARA ALAMIAH DENGAN PENSIUN DAN SWASTANISASI

TAHUN	93/94	94/95	95/96	96/97	97/98	98/99
PENSIUN	45059	43882	42987	41017	39400	37497
SWASTANISASI	45059	42646	40233	37819	35406	32993
PENS + SWAST	45059	42447	39835	37223	34611	31999



GRAFIK JUMLAH PEGAWAI 89/90 - 93/94

POSISI : 01 APRIL 1993



ATTACHMENT IV.

PENDIDIKAN BIMBINGAN PROFESI SARJANA

PERIODE 01 APRIL 1990 - 31 MARET 1991

J E N I S	TMT DIANGKAT	JUMLAH
BPST EP II/90	28.07.90	100
BPS SDM VII/89	30.07.90	27
BPS PIMPD I/89	30.07.90	18
BPS LOG I/89	30.07.90	19
BPS P XIII/90	18.08.90	150
BPS PKK I/90	25.08.90	38
BPSA III/89	15.10.90	26
BPS KES I/90	11.02.91	26
DIRECT HIRE 90/91		34
J U M L A H		438

PERIODE 01 APRIL 1991 - 31 MARET 1992

J E N I S	TMT DIANGKAT	JUMLAH
BPST EP III/90	20.06.91	76
KWP I/90	15.07.91	19
BPS HUKUM I/91	30.07.91	26
BPST P XIV/91	02.11.91	134
BPS LOG II/90	08.11.91	42
BPS SDM VIII/90	20.11.91	50
BPS PLN I/91	23.12.91	23
BPS EP IV/91	03.03.92	111
BPS O&T I/91	27.03.92	18
BPS KES II/91	27.03.92	20
BPS PENELITI	27.03.92	16
DIRECT HIRE		31
J U M L A H		566