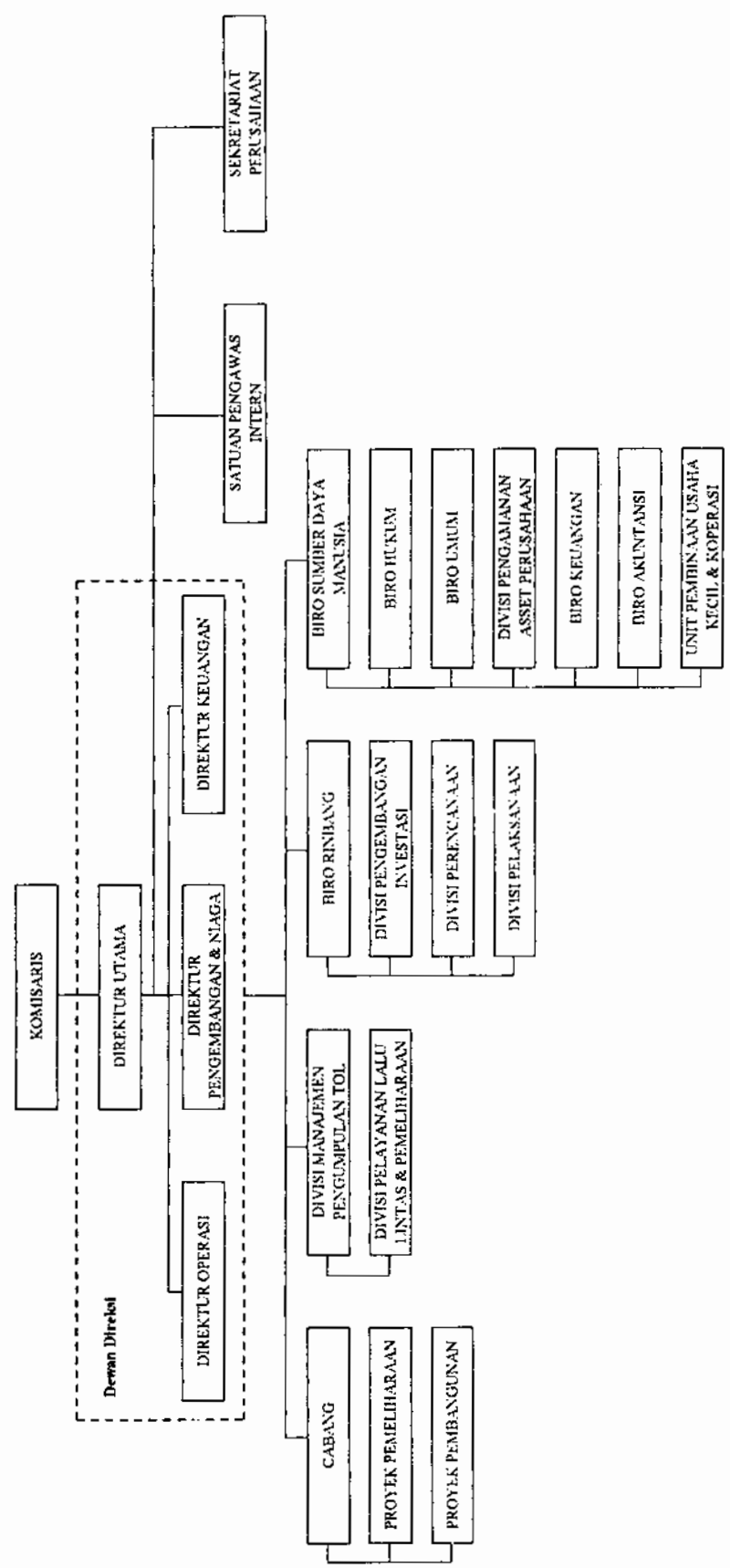


Lampiran 1.  
Struktur Organisasi PT Jasa Marga (persero)



## PERKIRAAN PENDAPATAN (REVENUE) &amp; BIAYA (COST)

TAHUN	PENDAPATAN					BIAYA				
	-20%	-10%	0%	10%	20%	-20%	-10%	0%	10%	20%
2003	-	-	-	-	-	-	-	-	-	-
2004	-	-	-	-	-	-	-	-	-	-
2005	66.917	75.282	83.647	92.011	100.376	47.200	53.100	59.000	64.900	70.800
2006	71.391	80.315	89.239	98.163	107.087	48.616	54.693	60.770	66.847	72.924
2007	291.961	328.456	364.951	401.446	437.941	50.074	56.334	62.593	68.852	75.112
2008	311.500	350.438	389.376	428.313	467.251	51.577	58.024	64.471	70.918	77.365
2009	410.130	461.396	512.663	563.929	615.195	53.124	59.765	66.405	73.046	79.686
2010	437.606	492.307	547.007	601.708	656.409	54.718	61.557	68.397	75.237	82.077
2011	576.200	648.225	720.250	792.275	864.300	56.359	63.404	70.449	77.494	84.539
2012	614.839	691.694	768.549	845.403	922.258	58.050	65.306	72.563	79.819	87.075
2013	809.613	910.815	1.012.017	1.113.218	1.214.420	59.792	67.265	74.739	82.213	89.687
2014	863.956	971.950	1.079.945	1.187.939	1.295.934	61.585	69.283	76.982	84.680	92.378
2015	1.137.715	1.279.929	1.422.144	1.564.358	1.706.573	63.433	71.362	79.291	87.220	95.149
2016	1.214.151	1.365.920	1.517.689	1.669.458	1.821.227	65.336	73.503	81.670	89.837	98.004
2017	1.598.968	1.798.839	1.998.710	2.198.581	2.398.452	67.296	75.708	84.120	92.532	100.944
2018	1.706.490	1.919.801	2.133.113	2.346.424	2.559.735	69.315	77.979	86.643	95.308	103.972
2019	2.247.476	2.528.411	2.809.345	3.090.280	3.371.214	71.394	80.319	89.243	98.167	107.091
2020	2.398.740	2.698.583	2.998.425	3.298.268	3.598.110	73.536	82.728	91.920	101.112	110.304
2021	3.159.355	3.554.274	3.949.193	4.344.112	4.739.032	75.742	85.210	94.678	104.145	113.613
2022	3.372.175	3.793.696	4.215.218	4.636.740	5.058.262	78.014	87.766	97.518	107.270	117.022
2023	4.441.692	4.996.904	5.552.115	6.107.327	6.662.538	80.355	90.399	100.444	110.488	120.532
2024	4.741.144	5.333.786	5.926.429	6.519.072	7.111.715	82.765	93.111	103.457	113.803	124.148
2025	6.245.169	7.025.815	7.806.461	8.587.108	9.367.754	85.248	95.905	106.561	117.217	127.873
2026	6.666.552	7.499.871	8.333.190	9.166.509	9.999.828	87.806	98.782	109.757	120.733	131.709
2027	8.781.820	9.879.548	10.977.275	12.075.003	13.172.731	90.440	101.745	113.050	124.355	135.660

### Lampiran 3. VARIABEL REVENUE DAN COST TETAP

Investasi = 2.535.000

TAHUN	REVENUE	COST	DF (12%)	PV of REVENUE	PV of COST	CASH FLOW	DF (20%)	PV of REVENUE	PV of COST	CASH FLOW
2002	-	368.000	1,0000	-	368.000	(368.000)	1,0000	-	368.000	(368.000)
2003	-	2.013.000	0,8929	-	1.797.321	(1.797.321)	0,8333	-	1.677.500	(1.677.500)
2004	-	154.000	0,7972	-	122.768	(122.768)	0,6944	-	106.944	(106.944)
2005	83.647	369.538	0,7118	59.538	263.029	(203.492)	0,5787	48.407	213.853	(165.446)
2006	89.239	371.308	0,6355	56.713	235.973	(179.260)	0,4823	43.036	179.064	(136.028)
2007	364.951	373.131	0,5674	207.083	211.724	(4.641)	0,4019	146.666	149.953	(3.287)
2008	389.376	375.008	0,5066	197.270	189.991	7.279	0,3349	130.401	125.590	4.812
2009	512.663	376.943	0,4523	231.903	170.510	61.393	0,2791	143.075	105.198	37.877
2010	547.007	378.935	0,4039	220.927	153.045	67.882	0,2326	127.216	88.128	39.088
2011	720.250	380.987	0,3606	259.729	137.388	122.342	0,1938	139.589	73.838	65.752
2012	768.549	383.100	0,3220	247.452	123.348	124.104	0,1615	124.125	61.873	62.252
2013	1.012.017	385.277	0,2875	290.931	110.758	180.173	0,1346	136.205	51.854	84.352
2014	1.079.945	387.519	0,2567	277.195	99.467	177.728	0,1122	121.123	43.463	77.660
2015	1.422.144	422.829	0,2292	325.919	96.901	229.017	0,0935	132.919	39.519	93.400
2016	1.517.689	392.207	0,2046	310.549	80.253	230.296	0,0779	118.208	30.548	87.660
2017	1.998.710	394.657	0,1827	365.157	72.102	293.054	0,0649	129.727	25.615	104.112
2018	2.133.113	397.181	0,1631	347.957	64.789	283.168	0,0541	115.376	21.483	93.893
2019	2.809.345	399.780	0,1456	409.165	58.226	350.939	0,0451	126.626	18.019	108.607
2020	2.998.425	402.458	0,1300	389.914	52.335	337.579	0,0376	112.624	15.117	97.507
2021	3.949.193	405.215	0,1161	458.528	47.048	411.480	0,0313	123.613	12.684	110.930
2022	4.215.218	408.056	0,1037	436.978	42.302	394.676	0,0261	109.950	10.644	99.306
2023	5.552.115	410.981	0,0926	513.902	38.040	475.861	0,0217	120.685	8.933	111.751
2024	5.926.429	413.994	0,0826	489.775	34.214	455.561	0,0181	107.351	7.499	99.852
2025	7.806.461	450.098	0,0738	576.023	33.212	542.811	0,0151	117.838	6.794	111.044
2026	8.333.190	420.295	0,0659	549.008	27.690	521.318	0,0126	104.824	5.287	99.537
2027	10.977.275	423.588	0,0588	645.720	24.917	620.803	0,0105	115.070	4.440	110.630

NPV1= 3.211.983

IRR = 18,47%

PI = 1,27

NPV2=

(757.185)



Lampiran 7. VARIABEL REVENUE +20%; COST TETAP

TAHUN	REVENUE	COST	DF (12%)	PV of REVENUE	PV of COST	CASH FLOW	DF (20%)	PV of REVENUE	PV of COST	CASH FLOW
2002	-	368.000	1,0000	-	368.000	(368.000)	1,0000	-	368.000	(368.000)
2003	-	2.013.000	0,8929	-	1.797.321	(1.797.321)	0,8333	-	1.677.500	(1.677.500)
2004	-	154.000	0,7972	-	122.768	(122.768)	0,6944	-	106.944	(106.944)
2005	100.376	369.538	0,7118	71.446	263.029	(191.584)	0,5787	58.088	213.853	(155.765)
2006	107.087	371.308	0,6355	68.055	235.973	(167.917)	0,4823	51.643	179.064	(127.421)
2007	437.941	373.131	0,5674	248.500	211.724	36.775	0,4019	175.999	149.953	26.046
2008	467.251	375.008	0,5066	236.724	189.991	46.733	0,3349	156.481	125.590	30.892
2009	615.195	376.943	0,4523	278.283	170.510	107.773	0,2791	171.690	105.198	66.492
2010	656.409	378.935	0,4039	265.113	153.045	112.067	0,2326	152.660	88.128	64.532
2011	864.300	380.987	0,3606	311.675	137.388	174.288	0,1938	167.507	73.838	93.669
2012	922.258	383.100	0,3220	296.942	123.348	173.595	0,1615	148.950	61.873	87.077
2013	1.214.420	385.277	0,2875	349.117	110.758	238.359	0,1346	163.446	51.854	111.593
2014	1.295.934	387.519	0,2567	332.634	99.467	233.167	0,1122	145.348	43.463	101.885
2015	1.706.573	422.829	0,2292	391.102	96.901	294.201	0,0935	159.503	39.519	119.984
2016	1.821.227	392.207	0,2046	372.659	80.253	292.406	0,0779	141.849	30.548	111.301
2017	2.398.452	394.657	0,1827	438.188	72.102	366.086	0,0649	155.673	25.615	130.057
2018	2.559.735	397.181	0,1631	417.548	64.789	352.759	0,0541	138.451	21.483	116.968
2019	3.371.214	399.780	0,1456	490.998	58.226	432.773	0,0451	151.952	18.019	133.932
2020	3.598.110	402.458	0,1300	467.897	52.335	415.561	0,0376	135.149	15.117	120.032
2021	4.739.032	405.215	0,1161	550.234	47.048	503.185	0,0313	148.336	12.684	135.652
2022	5.058.262	408.056	0,1037	524.374	42.302	482.072	0,0261	131.940	10.644	121.296
2023	6.662.538	410.981	0,0926	616.682	38.040	578.642	0,0217	144.822	8.933	135.888
2024	7.111.715	413.994	0,0826	587.730	34.214	553.516	0,0181	128.821	7.499	121.322
2025	9.367.754	450.098	0,0738	691.227	33.212	658.016	0,0151	141.406	6.794	134.611
2026	9.999.828	420.295	0,0659	658.810	27.690	631.120	0,0126	125.789	5.287	120.502
2027	13.172.731	423.588	0,0588	774.864	24.917	749.947	0,0105	138.084	4.440	133.644

NPV1= 4.785.450

IRR = 19,65%

PI = 1,89

NPV2= (218.255)

Lampiran 8. VARIABEL COST -20% ; REVENUE TETAP

TAHUN	REVENUE	COST	DF (12%)	PV of REVENUE	PV of COST	CASH FLOW	DF (20%)	PV of REVENUE	PV of COST	CASH FLOW
2002	-	294.400	1,0000	-	294.400	(294.400)	1,0000	-	294.400	(294.400)
2003	-	1.610.400	0,8929	-	1.437.857	(1.437.857)	0,8333	-	1.342.000	(1.342.000)
2004	-	123.200	0,7972	-	98.214	(98.214)	0,6944	-	85.556	(85.556)
2005	83.647	295.630	0,7118	59.538	210.424	(150.886)	0,5787	48.407	171.082	(122.676)
2006	89.239	297.046	0,6355	56.713	188.778	(132.065)	0,4823	43.036	143.251	(100.216)
2007	364.951	298.504	0,5674	207.083	169.379	37.703	0,4019	146.666	119.962	26.703
2008	389.376	300.007	0,5066	197.270	151.993	45.277	0,3349	130.401	100.472	29.929
2009	512.663	301.554	0,4523	231.903	136.408	95.495	0,2791	143.075	84.158	58.917
2010	547.007	303.148	0,4039	220.927	122.436	98.491	0,2326	127.216	70.502	56.714
2011	720.250	304.789	0,3606	259.729	109.910	149.819	0,1938	139.589	59.070	80.519
2012	768.549	306.480	0,3220	247.452	98.678	148.774	0,1615	124.125	49.498	74.627
2013	1.012.017	308.222	0,2875	290.931	88.606	202.324	0,1346	136.205	41.483	94.722
2014	1.079.945	310.015	0,2567	277.195	79.573	197.622	0,1122	121.123	34.770	86.353
2015	1.422.144	338.263	0,2292	325.919	77.521	248.398	0,0935	132.919	31.615	101.304
2016	1.517.689	313.766	0,2046	310.549	64.203	246.347	0,0779	118.208	24.438	93.769
2017	1.998.710	315.726	0,1827	365.157	57.682	307.475	0,0649	129.727	20.492	109.235
2018	2.133.113	317.745	0,1631	347.957	51.831	296.126	0,0541	115.376	17.186	98.189
2019	2.809.345	319.824	0,1456	409.165	46.581	362.585	0,0451	126.626	14.416	112.211
2020	2.998.425	321.966	0,1300	389.914	41.868	348.046	0,0376	112.624	12.093	100.531
2021	3.949.193	324.172	0,1161	458.528	37.639	420.890	0,0313	123.613	10.147	113.466
2022	4.215.218	326.444	0,1037	436.978	33.841	403.137	0,0261	109.950	8.515	101.435
2023	5.552.115	328.785	0,0926	513.902	30.432	483.469	0,0217	120.685	7.147	113.538
2024	5.926.429	331.195	0,0826	489.775	27.371	462.404	0,0181	107.351	5.999	101.352
2025	7.806.461	360.078	0,0738	576.023	26.569	549.453	0,0151	117.838	5.435	112.403
2026	8.333.190	336.236	0,0659	549.008	22.152	526.856	0,0126	104.824	4.230	100.595
2027	10.977.275	338.870	0,0588	645.720	19.933	625.786	0,0105	115.070	3.552	111.518

NPV1= 4.143.053

IRR = 19,87%

PI = 1,63

NPV2=

(66.818)

Lampiran 9. VARIABEL COST -10% ; REVENUE TETAP

TAHUN	REVENUE	COST	DF (12%)	PV of REVENUE	PV of COST	CASH FLOW	DF (20%)	PV of REVENUE	PV of COST	CASH FLOW
2002	-	331.200	1,0000	-	331.200	(331.200)	1,0000	-	331.200	(331.200)
2003	-	1.811.700	0,8929	-	1.617.589	(1.617.589)	0,8333	-	1.509.750	(1.509.750)
2004	-	138.600	0,7972	-	110.491	(110.491)	0,6944	-	96.250	(96.250)
2005	83.647	332.584	0,7118	59.538	236.727	(177.189)	0,5787	48.407	192.467	(144.061)
2006	89.239	334.177	0,6355	56.713	212.375	(155.662)	0,4823	43.036	161.158	(118.122)
2007	364.951	335.818	0,5674	207.083	190.552	16.531	0,4019	146.666	134.958	11.708
2008	389.376	337.508	0,5066	197.270	170.992	26.278	0,3349	130.401	113.031	17.370
2009	512.663	339.248	0,4523	231.903	153.459	78.444	0,2791	143.075	94.678	48.397
2010	547.007	341.041	0,4039	220.927	137.741	83.186	0,2326	127.216	79.315	47.901
2011	720.250	342.888	0,3606	259.729	123.649	136.081	0,1938	139.589	66.454	73.135
2012	768.549	344.790	0,3220	247.452	111.013	136.439	0,1615	124.125	55.686	68.439
2013	1.012.017	346.749	0,2875	290.931	99.682	191.248	0,1346	136.205	46.668	89.537
2014	1.079.945	348.767	0,2567	277.195	89.520	187.675	0,1122	121.123	39.117	82.006
2015	1.422.144	380.546	0,2292	325.919	87.211	238.707	0,0935	132.919	35.567	97.352
2016	1.517.689	352.987	0,2046	310.549	72.228	238.321	0,0779	118.208	27.493	90.715
2017	1.998.710	355.192	0,1827	365.157	64.892	300.265	0,0649	129.727	23.054	106.673
2018	2.133.113	357.463	0,1631	347.957	58.310	289.647	0,0541	115.376	19.334	96.041
2019	2.809.345	359.802	0,1456	409.165	52.403	356.762	0,0451	126.626	16.217	110.409
2020	2.998.425	362.212	0,1300	389.914	47.102	342.812	0,0376	112.624	13.605	99.019
2021	3.949.193	364.694	0,1161	458.528	42.343	416.185	0,0313	123.613	11.415	112.198
2022	4.215.218	367.250	0,1037	436.978	38.072	398.906	0,0261	109.950	9.579	100.371
2023	5.552.115	369.883	0,0926	513.902	34.236	479.665	0,0217	120.685	8.040	112.645
2024	5.926.429	372.595	0,0826	489.775	30.792	458.983	0,0181	107.351	6.749	100.602
2025	7.806.461	405.088	0,0738	576.023	29.891	546.132	0,0151	117.838	6.115	111.723
2026	8.333.190	378.265	0,0659	549.008	24.921	524.087	0,0126	104.824	4.758	100.066
2027	10.977.275	381.229	0,0588	645.720	22.425	623.294	0,0105	115.070	3.996	111.074

NPV1 = 3.677.518

IRR = 19,19%

PI = 1,45

NPV2 = (412.001)

Lampiran 10. VARIABEL COST +10% ; REVENUE TETAP

TAHUN	REVENUE	COST	DF (12%)	PV of REVENUE	PV of COST	CASH FLOW	DF (20%)	PV of REVENUE	PV of COST	CASH FLOW
2002	-	404.800	1,0000	-	404.800	(404.800)	1,0000	-	404.800	(404.800)
2003	-	2.214.300	0,8929	-	1.977.054	(1.977.054)	0,8333	-	1.845.250	(1.845.250)
2004	-	169.400	0,7972	-	135.045	(135.045)	0,6944	-	117.639	(117.639)
2005	83.647	406.491	0,7118	59.538	289.332	(229.794)	0,5787	48.407	235.238	(186.831)
2006	89.239	408.438	0,6355	56.713	259.570	(202.857)	0,4823	43.036	196.971	(153.935)
2007	364.951	410.444	0,5674	207.083	232.897	(25.814)	0,4019	146.666	164.948	(18.283)
2008	389.376	412.509	0,5066	197.270	208.990	(11.720)	0,3349	130.401	138.149	(7.747)
2009	512.663	414.637	0,4523	231.903	187.561	44.342	0,2791	143.075	115.718	27.357
2010	547.007	416.828	0,4039	220.927	168.350	52.577	0,2326	127.216	96.941	30.276
2011	720.250	419.085	0,3606	259.729	151.126	108.603	0,1938	139.589	81.222	58.368
2012	768.549	421.410	0,3220	247.452	135.683	111.769	0,1615	124.125	68.060	56.065
2013	1.012.017	423.805	0,2875	290.931	121.834	169.097	0,1346	136.205	57.039	79.166
2014	1.079.945	426.271	0,2567	277.195	109.413	167.782	0,1122	121.123	47.809	73.314
2015	1.422.144	465.111	0,2292	325.919	106.592	219.327	0,0935	132.919	43.471	89.448
2016	1.517.689	431.428	0,2046	310.549	88.279	222.271	0,0779	118.208	33.602	84.605
2017	1.998.710	434.123	0,1827	365.157	79.313	285.844	0,0649	129.727	28.177	101.550
2018	2.133.113	436.899	0,1631	347.957	71.268	276.689	0,0541	115.376	23.631	91.745
2019	2.809.345	439.758	0,1456	409.165	64.048	345.117	0,0451	126.626	19.821	106.805
2020	2.998.425	442.703	0,1300	389.914	57.569	332.345	0,0376	112.624	16.628	95.996
2021	3.949.193	445.737	0,1161	458.528	51.753	406.775	0,0313	123.613	13.952	109.661
2022	4.215.218	448.861	0,1037	436.978	46.532	390.446	0,0261	109.950	11.708	98.242
2023	5.552.115	452.079	0,0926	513.902	41.844	472.057	0,0217	120.685	9.827	110.858
2024	5.926.429	455.394	0,0826	489.775	37.635	452.140	0,0181	107.351	8.249	99.102
2025	7.806.461	495.108	0,0738	576.023	36.533	539.490	0,0151	117.838	7.474	110.364
2026	8.333.190	462.324	0,0659	549.008	30.459	518.549	0,0126	104.824	5.816	99.009
2027	10.977.275	465.946	0,0588	645.720	27.409	618.311	0,0105	115.070	4.884	110.186

NPV1 = 2.746.448

IRR = 17,1%

PI = 1,08

NPV2 = (1.102.369)



Lampiran 11. VARIABEL COST +20% ; REVENUE TETAP

TAHUN	REVENUE	COST	DF (12%)	PV of REVENUE	PV of COST	CASH FLOW	DF (20%)	PV of REVENUE	PV of COST	CASH FLOW
2002	-	441.600	1,0000	-	441.600	(441.600)	1,0000	-	441.600	(441.600)
2003	-	2.415.600	0,8929	-	2.156.786	(2.156.786)	0,8333	-	2.013.000	(2.013.000)
2004	-	184.800	0,7972	-	147.321	(147.321)	0,6944	-	128.333	(128.333)
2005	83.647	443.445	0,7118	59.538	315.635	(256.097)	0,5787	48.407	256.623	(208.217)
2006	89.239	445.569	0,6355	56.713	283.167	(226.454)	0,4823	43.036	214.877	(171.841)
2007	364.951	447.757	0,5674	207.083	254.069	(46.986)	0,4019	146.666	179.943	(33.278)
2008	389.376	450.010	0,5066	197.270	227.989	(30.719)	0,3349	130.401	150.707	(20.306)
2009	512.663	452.331	0,4523	231.903	204.612	27.291	0,2791	143.075	126.237	16.837
2010	547.007	454.722	0,4039	220.927	183.654	37.273	0,2326	127.216	105.754	21.463
2011	720.250	457.184	0,3606	259.729	164.865	94.864	0,1938	139.589	88.605	50.984
2012	768.549	459.720	0,3220	247.452	148.018	99.435	0,1615	124.125	74.247	49.878
2013	1.012.017	462.332	0,2875	290.931	132.909	158.021	0,1346	136.205	62.224	73.981
2014	1.079.945	465.023	0,2567	277.195	119.360	157.835	0,1122	121.123	52.155	68.968
2015	1.422.144	507.394	0,2292	325.919	116.282	209.637	0,0935	132.919	47.423	85.496
2016	1.517.689	470.649	0,2046	310.549	96.304	214.245	0,0779	118.208	36.657	81.550
2017	1.998.710	473.589	0,1827	365.157	86.523	278.634	0,0649	129.727	30.739	98.989
2018	2.133.113	476.617	0,1631	347.957	77.747	270.210	0,0541	115.376	25.779	89.596
2019	2.809.345	479.736	0,1456	409.165	69.871	339.294	0,0451	126.626	21.623	105.003
2020	2.998.425	482.949	0,1300	389.914	62.803	327.111	0,0376	112.624	18.140	94.484
2021	3.949.193	486.258	0,1161	458.528	56.458	402.070	0,0313	123.613	15.220	108.393
2022	4.215.218	489.667	0,1037	436.978	50.762	386.216	0,0261	109.950	12.772	97.177
2023	5.552.115	493.177	0,0926	513.902	45.648	468.253	0,0217	120.685	10.720	109.965
2024	5.926.429	496.793	0,0826	489.775	41.056	448.719	0,0181	107.351	8.999	98.352
2025	7.806.461	540.118	0,0738	576.023	39.854	536.169	0,0151	117.838	8.153	109.685
2026	8.333.190	504.354	0,0659	549.008	33.228	515.780	0,0126	104.824	6.344	98.480
2027	10.977.275	508.305	0,0588	645.720	29.900	615.819	0,0105	115.070	5.328	109.742

NPV1= 2.280.913

IRR = 16,89%

PI = 0,90

NPV2= (1.447.553)

## Lampiran 12.

## DATA-DATA DASAR PERHITUNGAN BOK

DATA	SAT.	GOL. I	GOL. IIA	GOL. IIB
Jenis kendaraan		Kijang	Bus	Trailer
Tahun pembuatan		1996	1996	1995
Jarak tempuh tahunan rata-rata	km	20000	210000	210000
Harga kendaraan baru	Rp	95.000.000	646.800.000	970.200.000
Harga kendaraan baru terdepresiasi	Rp	7.125.000	48.510.000	72.765.000
suku bunga	tahun	15%	15%	15%
harga 1 buah ban	Rp	400.000	670.000	1.250.000
harga bahan bakar / liter	Rp	1450	900	900
Harga minyak pelumas / liter	Rp	24000	21000	21000
Ongkos mekanik / jam	Rp	2000	4000	4000
Lokasi		Cikampek - Purwakarta - Padalarang		
Jarak tol	km	59	59	59
Jarak non tol	km	63,1	63,1	63,1
Waktu tempuh jalan tol	menit	44,25	44,25	44,25
Waktu tempuh jalan non tol	menit	120,5	153	154,5
Kecepatan perjalanan pada jalan tol	km/jam	80	80	80
Kecepatan perjalanan pada jalan non t	km/jam	31,42	24,75	24,5
Kekasaran permukaan jalan tol	m/km	3,655	3,655	3,655
Kekasaran permukaan jalan non tol	m/km	1,6	1,6	1,6
VCR tol		0,245	0,245	0,245
VCR non tol		0,387	0,387	0,387
Nilai waktu		12287	18534	13768

## HASIL PERHITUNGAN BKBOK

## GOLONGAN I

Komponen BOK	Model		
	tol	non tol	Prosentase penghematan
Konsumsi bahan bakar	10.280,72	9.977,41	(1,44)
Konsumsi oli	7.009,20	4.240,32	(13,14)
Konsumsi ban	1.563,52	587,26	(4,63)
Pemeliharaan	526,22	400,82	(0,60)
Depresiasi	646,73	1.104,37	2,17
Bunga modal	3.562,50	3.562,50	-
Asuransi	5.324,75	14.499,75	43,54
Nilai waktu	9.061,66	24.675,67	74,10
<b>Total</b>	<b>37.975,30</b>	<b>59.048,10</b>	<b>100,00</b>
Penghematan		21.072,79	
Rata <sup>2</sup> penghematan / km		357,17	

## GOLONGAN IIA

Komponen BOK	Model		
	tol	non tol	Prosentase penghematan
Konsumsi bahan bakar	14.455,38	15.901,01	5,28
Konsumsi oli	11.151,00	7.288,05	(14,10)
Konsumsi ban	3.651,83	1.019,48	(9,61)
Pemeliharaan	14.483,87	9.553,35	(18,00)
Depresiasi	1.223,12	2.274,98	3,84
Bunga modal	2.310,00	2.310,00	-
Asuransi	1.113,04	3.847,70	9,98
Nilai waktu	13.668,83	47.252,34	122,61
<b>Total</b>	<b>62.057,06</b>	<b>89.446,91</b>	<b>100,00</b>
Penghematan		27.389,84	
Rata <sup>2</sup> penghematan / km		464,23	

## GOLONGAN IIB

Komponen BOK	Model		
	tol	non tol	Prosentase penghematan
Konsumsi bahan bakar	18.556,67	20.514,57	5,17
Konsumsi oli	9.106,65	5.830,44	(8,65)
Konsumsi ban	8.738,69	2.537,53	(16,37)
Pemeliharaan	13.742,65	9.618,79	(10,88)
Depresiasi	2.752,01	5.135,87	6,29
Bunga modal	3.465,00	3.465,00	-
Asuransi	8.765,15	30.609,81	57,65
Nilai waktu	10.153,90	35.459,62	66,79
<b>Total</b>	<b>75.280,71</b>	<b>113.171,64</b>	<b>100,00</b>
Penghematan		37.890,93	
Rata <sup>2</sup> penghematan / km		642,22	