

Lampiran 3

Pergerakan PPE/BVA tahun 2008-2009

Perusahaan	Asset Tetap tahun 2007	T. Asset tahun 2007	PPE/BVA tahun 2007	Asset Tetap tahun 2008	T. Asset tahun 2008	PPE/BVA tahun 2008	Asset Tetap tahun 2009	T. Asset tahun 2009	PPE/BVA tahun 2009	Δ PPE/BVA 2008	Δ PPE/BVA 2009
	(1)	(2)	(3)= $\frac{1}{2}$	(4)	(5)	(6)= $\frac{4}{5}$	(7)	(8)	(9)= $\frac{7}{8}$	(10)= $\frac{6-3}{3}$	(11)= $\frac{9-6}{6}$
EPMT	254100	2094435	0.1213	290487	2513340	0.1156	346714	2986182	0.1161	-3.6153	-4.7341
FAST	140050	629491	0.2225	166690	784759	0.2124	187611	1041409	0.1802	-4.1162	-4.5272
FORU	10863	190446	0.0570	9787	192733	0.0508	9820	230276	0.0426	-10.1863	-10.9743
GGRM	6410978	23928968	0.2679	6608094	24072959	0.2745	7019464	27230965	0.2578	-14.8872	2.4581
HMSP	3522336	15680542	0.2246	4329506	16133819	0.2683	4310194	17716447	0.2433	18.9436	19.4625
IKBI	128313	589322	0.2177	122328	636409	0.1922	122526	561949	0.2180	-12.0414	-11.7181
KLBF	1204148	5138213	0.2344	1327347	5703832	0.2327	1398128	6482447	0.2157	5.8001	-0.6998
LSIP	1108134	3938140	0.2814	1377634	4921310	0.2799	1603497	4852277	0.3305	-4.8268	-0.5163
MICE	25817	249021	0.1037	37995	268629	0.1414	40655	291306	0.1396	-12.1713	36.4281
MTDL	44997	1162251	0.0387	70304	1288796	0.0546	64601	1059054	0.0610	-8.6089	40.9004
SCMA	320279	2552198	0.1255	394815	2322302	0.1700	386629	2359837	0.1638	-23.6202	35.4755
SMAR	2005716	8063169	0.2488	2862571	10025916	0.2855	3389877	10210595	0.3320	-19.5453	14.7806
SOBI	255131	842505	0.3028	350443	1111100	0.3154	648100	1262529	0.5133	-19.2756	4.1534
TGKA	90922	1348755	0.0674	116612	1525749	0.0764	119440	1466079	0.0815	-15.6755	13.3768
TRST	1388825	2138991	0.6493	1382187	2158866	0.6402	1310044	1921660	0.6817	-7.7698	-1.3942
TSPC	628075	2773135	0.2265	665063	2967057	0.2241	715003	3263103	0.2191	-8.7437	-1.0316
UNSP	741089	4310904	0.1719	743286	4700319	0.1581	687481	5071797	0.1355	-9.9493	-8.0130

Pergerakan LDE tahun 2008-2009

Perusahaan	T. Hutang jgk Panjang 2007 (1)	T. Ekuitas tahun 2007 (2)	LDE tahun 2007 (3)= ½	T. Hutang jgk Panjang tahun 2008 (4)	T. Ekuitas tahun 2008 (5)	LDE tahun 2008 (6)= 4/5	T. Hutang jgk Panjang tahun 2009 (7)	T. Ekuitas tahun 2009 (8)	LDE tahun 2009 (9)= 7/8	Δ LDE 2008 (10)= $\frac{6-3}{3}$	Δ LDE 2009 (11)= $\frac{9-6}{6}$
EPMT	40198	1127149	0.0357	37996	48935	1337043	1603411	0.0284	0.0305	-8.8155	-20.3163
FAST	63905	377358	0.1693	74131	81526	482545	639106	0.1536	0.1276	3.1397	-9.2847
FORU	5890	84743	0.0695	7656	9602	92450	97169	0.0828	0.0988	25.9397	19.1471
GGRM	866866	14119796	0.0614	883156	887145	15519266	18301537	0.0569	0.0485	14.8343	-7.3079
HMSP	1401703	8063542	0.1738	441377	503492	8047896	10461616	0.0548	0.0481	-21.4715	-68.4502
IKBI	7921	440049	0.0180	9289	11768	507136	492104	0.0183	0.0239	2.3827	1.7573
KLBF	366559	3386862	0.1082	108618	117375	3622399	4310438	0.0300	0.0272	-23.0850	-72.2949
LSIP	789766	2315027	0.3411	874093	352623	3197059	3813465	0.2734	0.0925	-33.3783	-19.8572
MICE	5585	196979	0.0284	6266	5870	208590	226837	0.0300	0.0259	-8.4879	5.9482
MTDL	32266	284282	0.1135	128826	134759	317151	320261	0.4062	0.4208	-25.1124	257.8835
SCMA	592417	1238274	0.4784	585604	593954	1355960	1395664	0.4319	0.4256	21.9615	-9.7294
SMAR	2345313	3528246	0.6647	2513170	2505716	4615204	4795878	0.5445	0.5225	4.3475	-18.0802
SOBI	58856	441320	0.1334	76975	156598	543759	672907	0.1416	0.2327	4.3875	6.1466
TGKA	122285	294057	0.4159	145409	175410	378852	391705	0.3838	0.4478	-1.8120	-7.7046
TRST	484492	981161	0.4938	407402	268079	1037387	1144729	0.3927	0.2342	-0.8234	-20.4691
TSPC	98673	2115644	0.0466	119428	140919	2235688	2408871	0.0534	0.0585	8.2492	14.5353
UNSP	40198	1127149	0.0357	37996	48935	1337043	1603411	0.0284	0.0305	-8.8155	-20.3163

Rata-rata Pergerakan DPR tahun 2008-2009

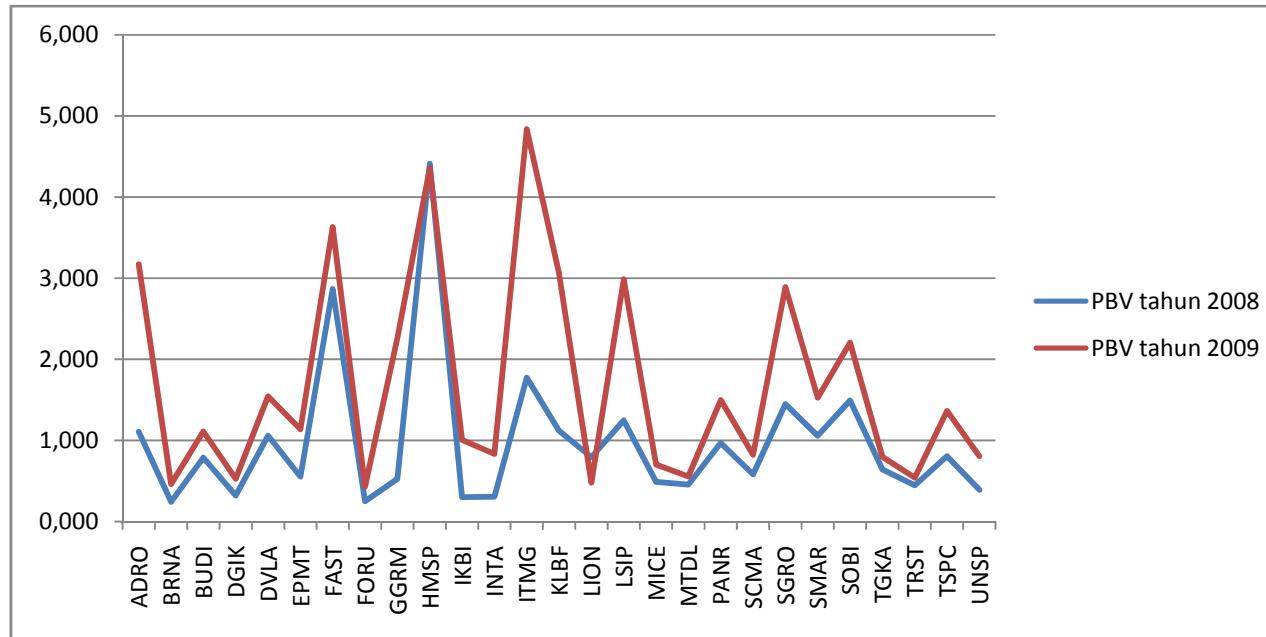
Perusahaan	Dividen per lbr Saham 2007 (1)	EPS tahun 2007 (2)	DPR tahun 2007 (3)= $\frac{1}{2}$	Dividen per lbr Saham tahun 2008 (4)	EPS tahun 2008 (5)	DPR tahun 2008 (6)= $\frac{4}{5}$	Dividen per lbr Saham tahun 2009 (7)	EPS tahun 2009 (8)	DPR tahun 2009 (9)= $\frac{7}{8}$	Δ DPR 2008 (10)= $\frac{6-3}{3}$	Δ DPR 2009 (11)= $\frac{9-6}{6}$
EPMT	25	101.6	0.2461	27.5	117.06	0.234922	27.5	144.33	0.190536	-9.70472	-4.52759
FAST	45	229.78	0.1958	57	280.71	0.203057	83	407.84	0.203511	0.83123	3.685179
FORU	3	15.65	0.1917	4	19.56	0.204499	4	14.14	0.282885	-55.2716	6.6803
GGRM	250	750.27	0.3332	350	977.34	0.358115	650	1796.02	0.361911	-30.1865	7.473141
HMSP	540	826.84	0.6531	110	888.72	0.123774	765	1160.7	0.659085	-30.3228	-81.048
IKBI	100	253.16	0.3950	125	319.24	0.391555	32	93.85	0.34097	27.28885	-0.87395
KLBF	10	69.49	0.1439	12.5	69.6	0.179598	25	91.47	0.273314	-4.13009	24.80244
LSIP	125	486.36	0.2570	135	727.48	0.185572	125	646.21	0.193436	1.994921	-27.7961
MICE	20	50.02	0.3998	20	39.9	0.501253	20	50.57	0.395491	70.012	25.36341
MTDL	2.8	13.95	0.2007	1	14.67	0.068166	1	4.93	0.20284	-31.221	-66.0386
SCMA	28	67.06	0.4175	170	109.41	1.553789	170	149.38	1.138037	99.26931	272.1323
SMAR	5	344.32	0.0145	180	364.32	0.494071	75	260.6	0.287797	-93.0976	3302.372
SOBI	32	104.65	0.3058	50	157.97	0.316516	55	174.02	0.316056	-21.3327	3.510556
TGKA	28	51.38	0.5450	40	120.55	0.331813	39	53.99	0.722356	-10.3153	-39.1124
TRST	5	6.32	0.7911	10	20.66	0.484027	15	51.24	0.29274	46.20253	-38.819
TSPC	25	61.86	0.4041	75	71.26	1.052484	35	79.99	0.437555	879.2111	160.4266
UNSP	17	54.54	0.3117	9	45.82	0.196421	3.8	66.73	0.056946	54.12419	-36.9836

Pergerakan PBV tahun 2008-2009

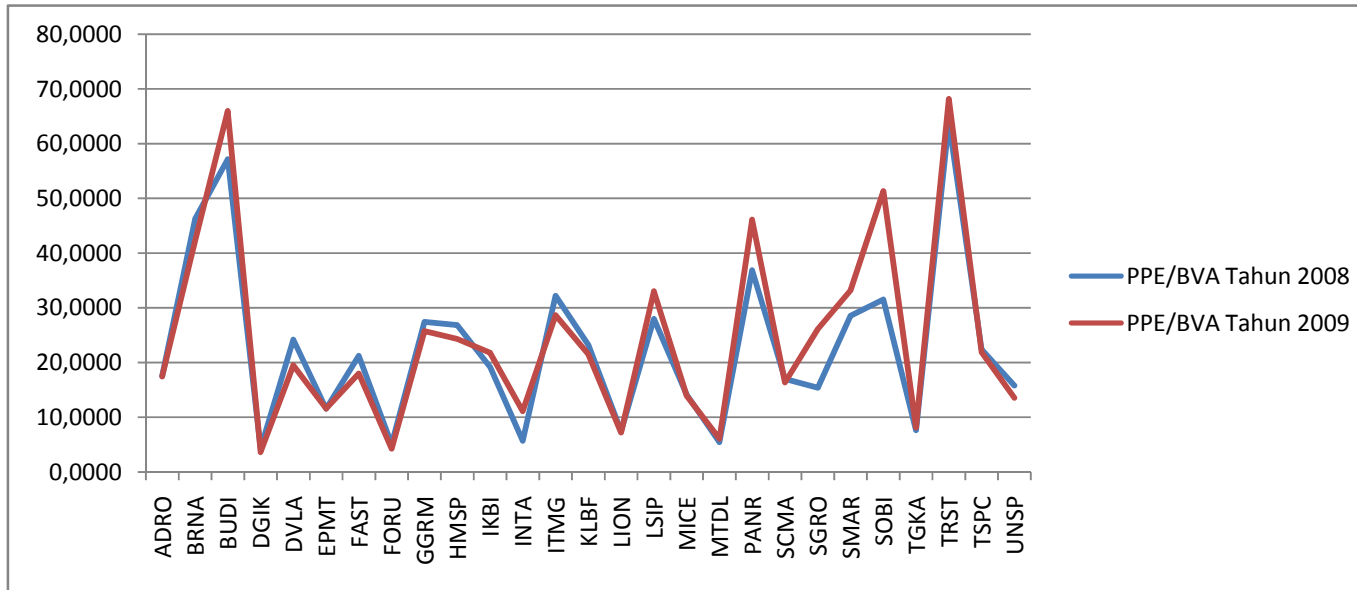
Perusahaan	Closing Price 2007	Book Value tahun 2007	PBV tahun 2007	Closing Price tahun 2008	Book Value tahun 2008	PBV tahun 2008	Closing Price tahun 2009	Book Value tahun 2009	PBV tahun 2009	Δ PBV 2008	Δ PBV 2009
	(1)	(2)	(3)= $\frac{1}{2}$	(4)	(5)	(6)= $\frac{4}{5}$	(7)	(8)	(9)= $\frac{7}{8}$	(10)= $\frac{6-3}{3}$	(11)= $\frac{9-6}{6}$
EPMT	770	494.36	1.5576	325	586.42	0.5542	800	703.25	1.1376	0.1062	-64.4183
FAST	2450	845.62	2.8973	3100	1081.33	2.8668	5200	1432.17	3.6309	2.8137	-1.05073
FORU	126	182.16	0.6917	50	198.72	0.2516	90	208.86	0.4309	30.2701	-63.6243
GGRM	4250	7338.44	0.5791	4250	8065.78	0.5269	21550	9511.8	2.2656	-53.4086	-9.0176
HMSP	14300	1839.73	7.7729	8100	1836.16	4.4114	10400	2386.86	4.3572	4.1005	-43.2465
IKBI	1150	1438.07	0.7997	500	1657.31	0.3017	1620	1608.18	1.0073	18.9684	-62.2733
KLBF	400	333.48	1.1995	400	356.68	1.1215	1300	424.42	3.0630	-71.9285	-6.50443
LSIP	2100	3265.72	0.6430	2925	2342.9	1.2485	8350	2794.62	2.9879	-15.8385	94.14749
MICE	790	328.3	2.4063	170	347.65	0.4890	265	378.06	0.7009	-27.9867	-79.6787
MTDL	184	139.22	1.3216	71	155.32	0.4571	87	156.84	0.5547	114.3715	-65.4129
SCMA	940	653.87	1.4376	415	713.36	0.5818	600	730.34	0.8215	8.2024	-59.5328
SMAR	6000	1228.42	4.8843	1700	1606.86	1.0580	2550	1669.75	1.5272	20.0741	-78.3396
SOBI	1250	490.36	2.5491	900	602.82	1.4930	1640	743.28	2.2064	1306.6834	-41.4321
TGKA	320	320.15	0.9995	265	412.47	0.6425	340	426.46	0.7973	4.1330	-35.7228
TRST	174	349.42	0.4980	165	369.44	0.4466	220	407.67	0.5397	19.3063	-10.3111
TSPC	750	470.14	1.5953	400	496.82	0.8051	730	535.3	1.3637	665.1143	-49.5307
UNSP	255	629.7	0.4050	255	652.11	0.3910	568	704.82	0.8059	-94.9947	-3.43654

Lampiran 4

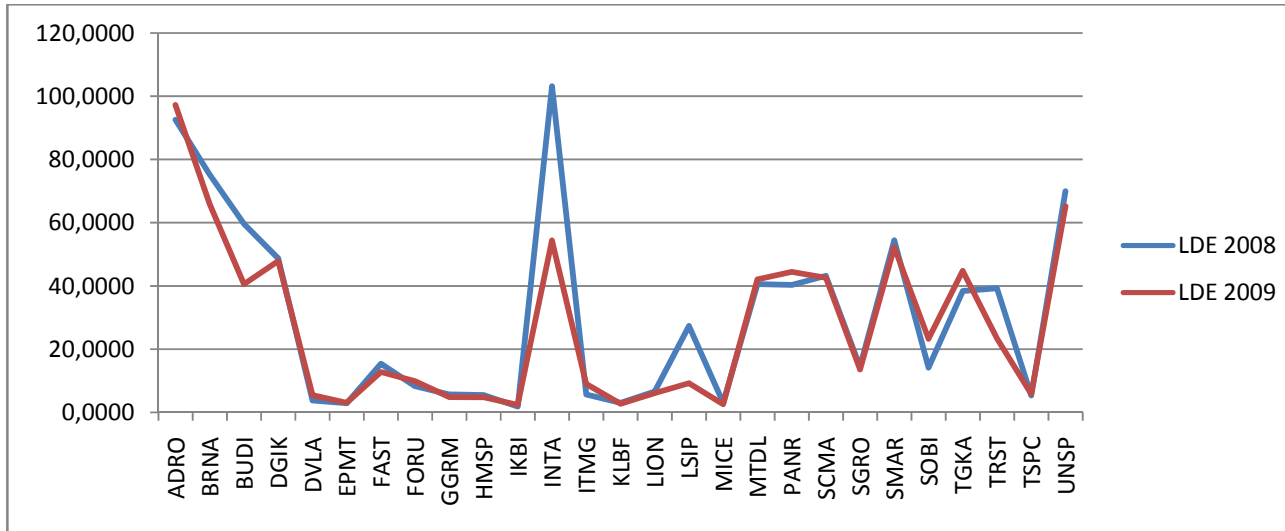
Grafik Nilai PBV Tahun 2008 - 2009



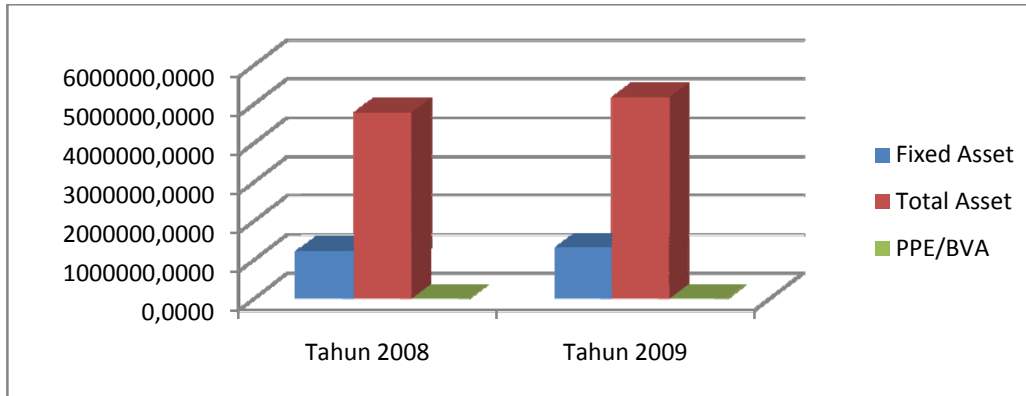
Grafik Nilai PPE/ BVA Tahun 2008 - 2009



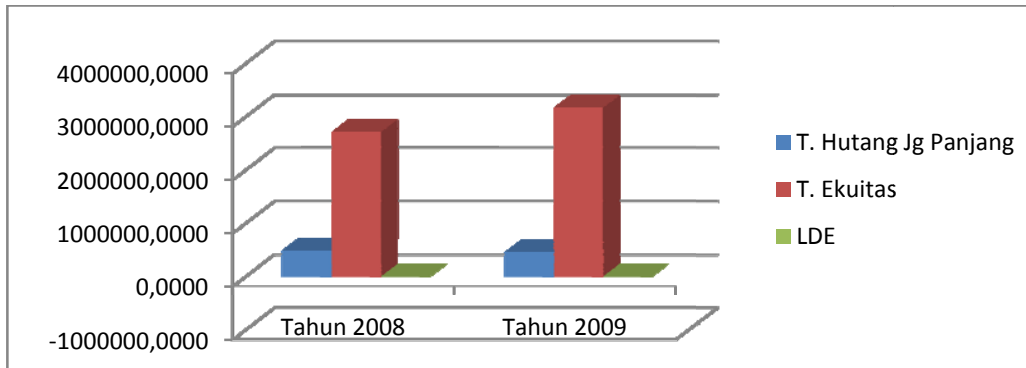
Grafik Nilai LDE Tahun 2008 – 2009



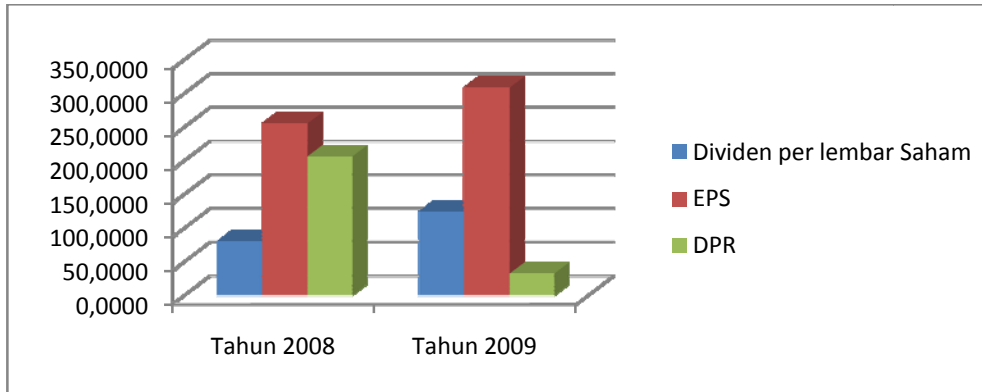
Grafik Rata-rata Pergerakan PPE/BVA tahun 2008-2009



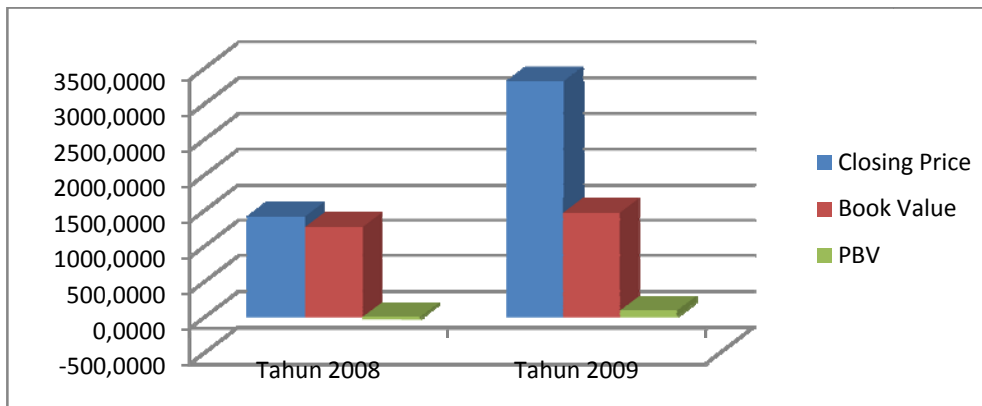
Grafik Rata-rata Pergerakan LDE tahun 2008-2009



Grafik Rata-rata Pergerakan DPR tahun 2008-2009



Grafik Rata-rata Pergerakan PBV tahun 2008-2009



Lampiran 5 Hasil Output Statistik

ANOVA^b

Model		Sum of Squares	df	Mean Square	F	Sig.
1	Regression	4.950	2	2.475	5.107	.010 ^a
	Residual	24.715	51	.485		
	Total	29.664	53			

a. Predictors: (Constant), S.K Institusional, S.K Manajerial

b. Dependent Variable: PPE/BVA

ANOVA^b

Model		Sum of Squares	df	Mean Square	F	Sig.
1	Regression	23.824	3	7.941	7.330	.000 ^a
	Residual	54.171	50	1.083		
	Total	77.995	53			

a. Predictors: (Constant), S.K Institusional, S.K Manajerial, PPE/BVA

b. Dependent Variable: LDE

ANOVA^b

Model		Sum of Squares	df	Mean Square	F	Sig.
1	Regression	5.542	4	1.385	3.972	.007 ^a
	Residual	17.089	49	.349		
	Total	22.631	53			

a. Predictors: (Constant), S.K Institusional, S.K Manajerial, PPE/BVA, LDE

b. Dependent Variable: DPR

ANOVA^b

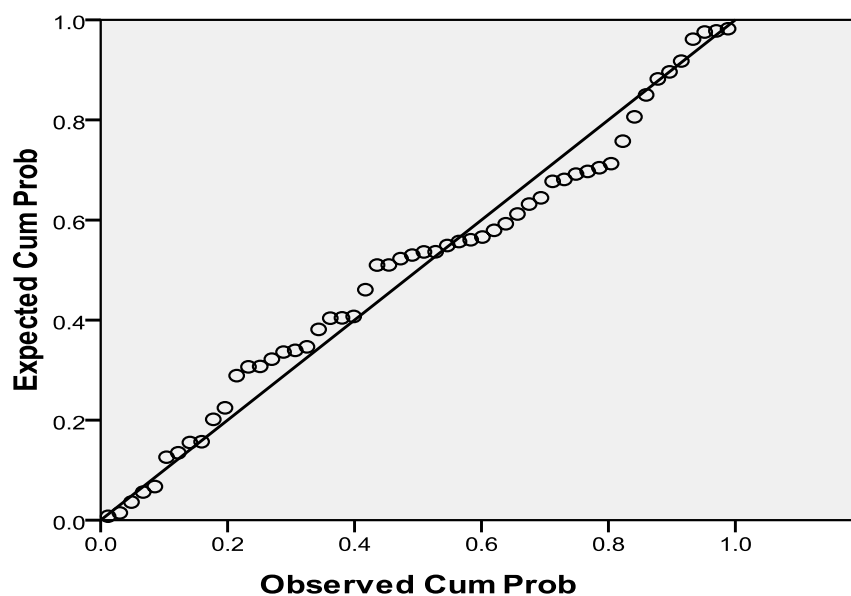
Model		Sum of Squares	df	Mean Square	F	Sig.
1	Regression	.251	5	.050	5.712	.000 ^a
	Residual	.421	48	.009		
	Total	.672	53			

a. Predictors: (Constant), DPR, LDE, PPE/BVA, S.K Instiusional, S.K Manajerial

b. Dependent Variable: PBV

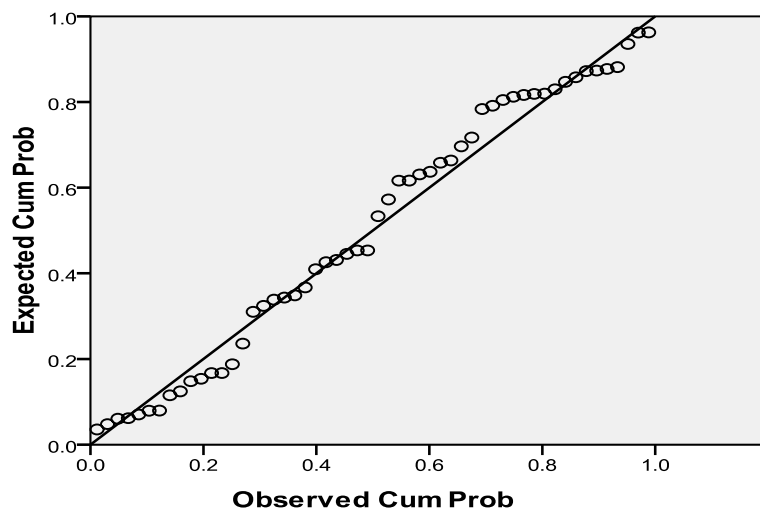
Normal P-P Plot of Regression Standardized Residual

Dependent Variable: PPE/BVA



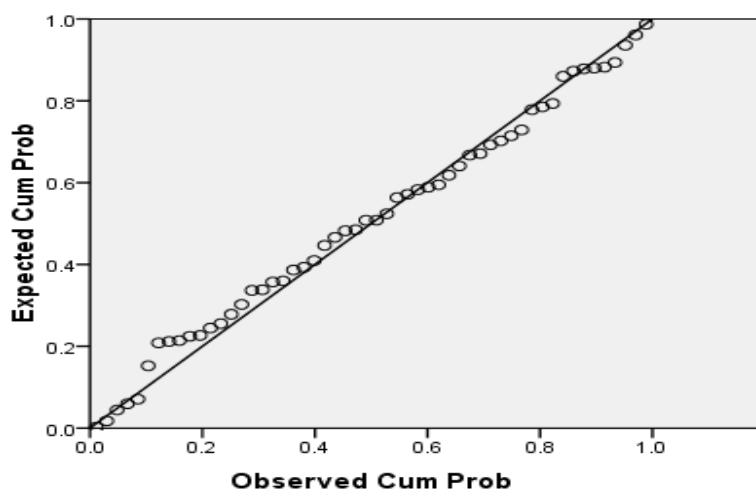
Normal P-P Plot of Regression Standardized Residual

Dependent Variable: LDE

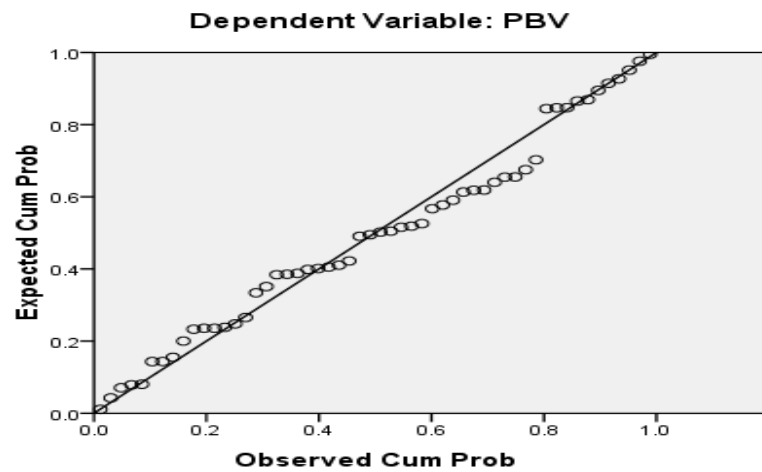


Normal P-P Plot of Regression Standardized Residual

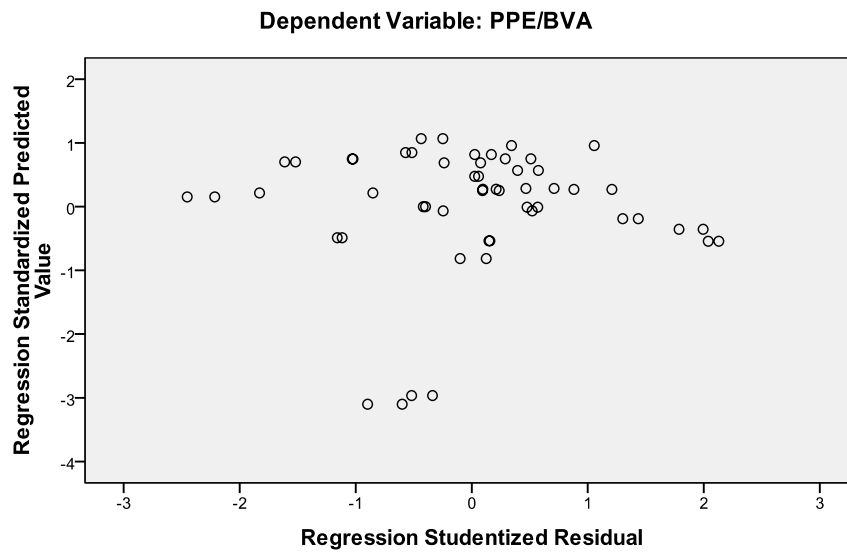
Dependent Variable: DPR



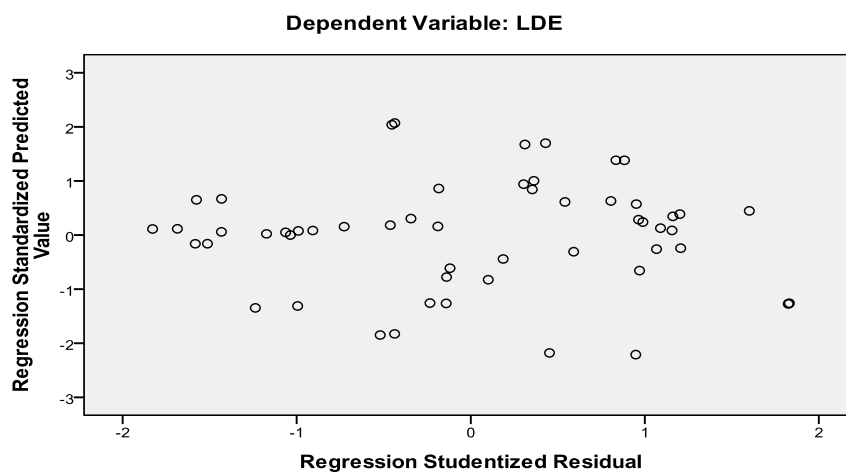
Normal P-P Plot of Regression Standardized Residual



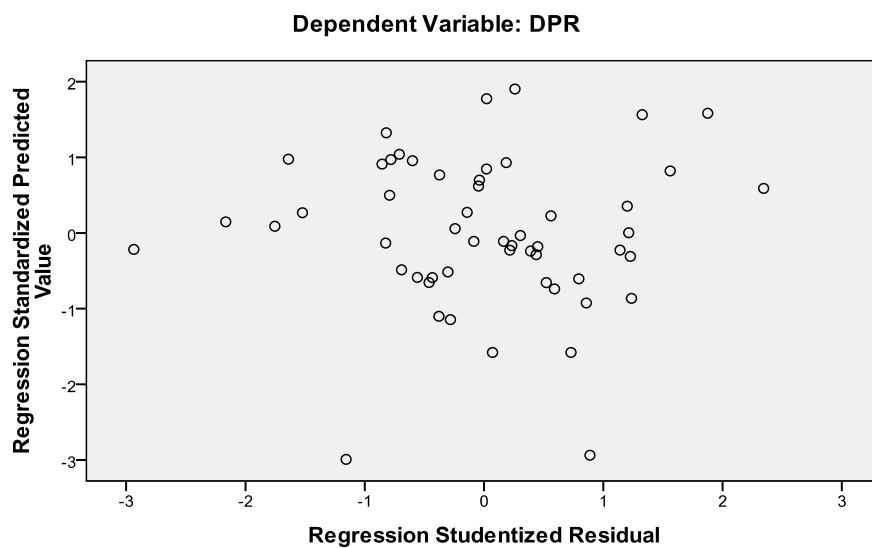
Scatterplot



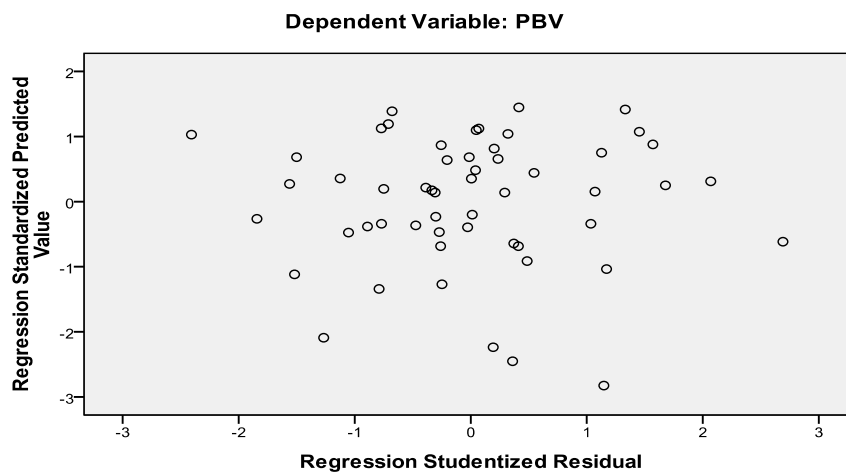
Scatterplot



Scatterplot



Scatterplot



Model Summary^b

Model	R	R Square	Adjusted R Square	Std. Error of the Estimate	Durbin-Watson
1	.408 ^a	.167	.134	.6961330	1.538

a. Predictors: (Constant), S.K Institucional, S.K Manajerial

b. Dependent Variable: PPE/BVA

Model Summary^b

Model	R	R Square	Adjusted R Square	Std. Error of the Estimate	Durbin-Watson
1	.553 ^a	.305	.264	.5408756	1.662

a. Predictors: (Constant), S.K Institucional, S.K Manajerial, PPE/BVA

b. Dependent Variable: LDE

Model Summary^b

Model	R	R Square	Adjusted R Square	Std. Error of the Estimate	Durbin-Watson
1	.495 ^a	.245	.183	.5905618	1.576

a. Predictors: (Constant), S.K Institucional, S.K Manajerial, PPE/BVA, LDE

b. Dependent Variable: DPR

Model Summary^b

Model	R	R Square	Adjusted R Square	Std. Error of the Estimate	Durbin-Watson
1	.611 ^a	.373	.308	.093686	1.860

a. Predictors: (Constant), DPR, LDE, PPE/BVA, S.K Institucional, S.K Manajerial

b. Dependent Variable: PBV

Coefficients^a

Model	Unstandardized Coefficients		Standardized Coefficients	t	Sig.	Collinearity Statistics	
	B	Std. Error	Beta			Tolerance	VIF
1 (Constant)	-.095	.967		-.098	.922		
S.K Manajerial	-.047	.053	-.112	-0.878	.384	.996	1.004
S.K Institucional	.713	.228	.400	3.123	.003	.996	1.004

a. Dependent Variable: PPE/BVA

Coefficients^a

Model	Unstandardized Coefficients		Standardized Coefficients	t	Sig.	Collinearity Statistics	
	B	Std. Error	Beta			Tolerance	VIF
1 (Constant)	4.309	1.447		2.979	.004		
PPE/BVA	.184	.209	.113	.878	.384	.833	1.200
S.K Manajerial	.373	.081	.551	4.628	.000	.981	1.019
S.K Institusional	-.463	.373	-.160	-1.243	.220	.836	1.196

a. Dependent Variable: LDE

Coefficients^a

Model	Unstandardized Coefficients		Standardized Coefficients	t	Sig.	Collinearity Statistics	
	B	Std. Error	Beta			Tolerance	VIF
1 (Constant)	.855	.891		.960	.342		
PPE/BVA	.122	.120	.139	1.018	.314	.820	1.219
LDE	.121	.080	.224	1.504	.139	.695	1.440
S.K Manajerial	-.153	.055	-.419	-2.795	.007	.687	1.456
S.K Institusional	.450	.215	.289	2.094	.041	.811	1.233

a. Dependent Variable: DPR

Coefficients^a

Model	Unstandardized Coefficients		Standardized Coefficients	t	Sig.	Collinearity Statistics	
	B	Std. Error	Beta			Tolerance	VIF
1 (Constant)	.594	.143		4.165	.000		
PPE/BVA	.056	.019	.372	2.917	.005	.804	1.245
LDE	-.007	.013	-.070	-.501	.619	.664	1.506
S.K Manajerial	-.016	.009	-.256	-1.723	.091	.592	1.688
S.K Institucional	.092	.036	.342	2.579	.013	.744	1.343
DPR	-.043	.023	-.247	-1.879	.066	.755	1.324

a. Dependent Variable: PBV