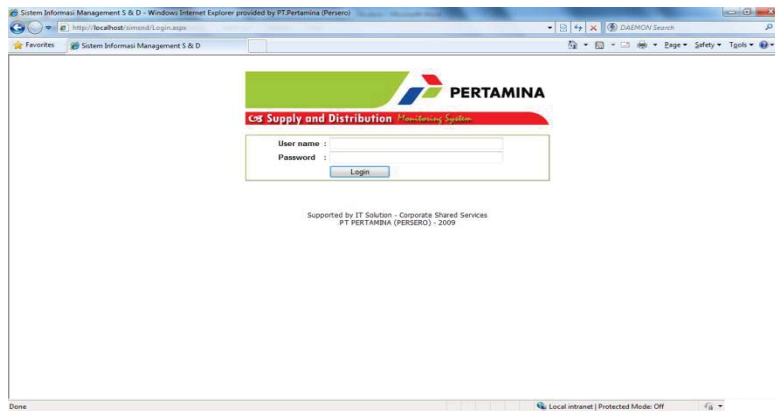


## LAMPIRAN

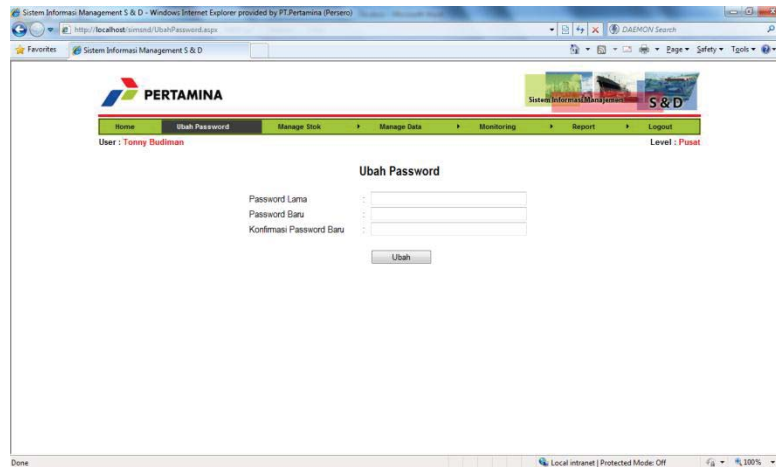
### 1. Halaman Login



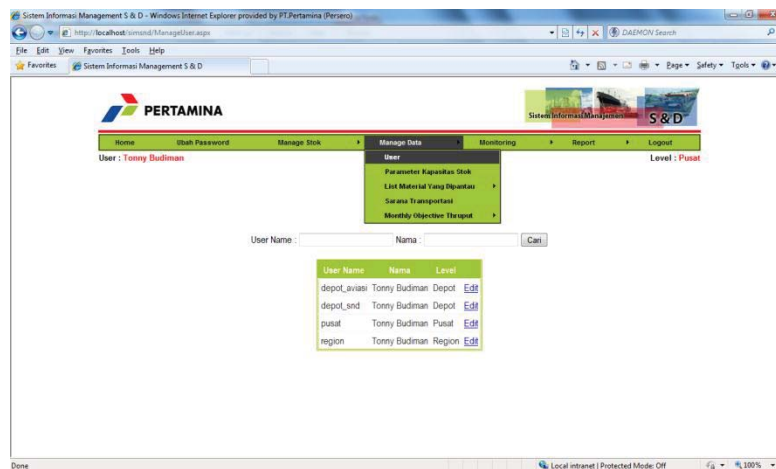
### 2. Halaman Utama



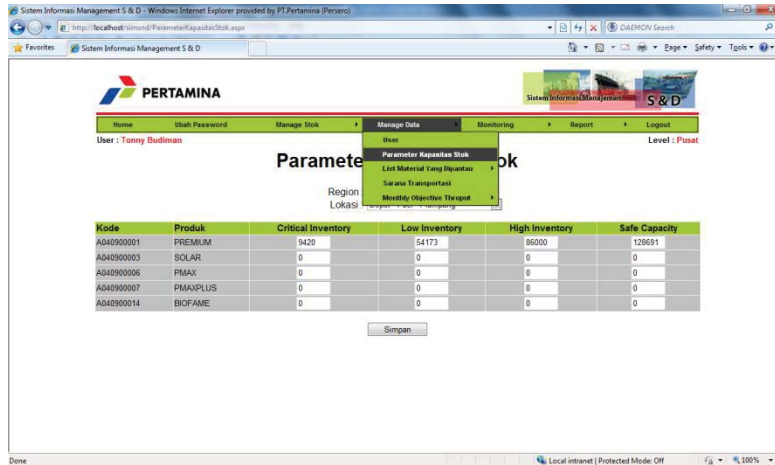
### 3. Halaman Ubah Password



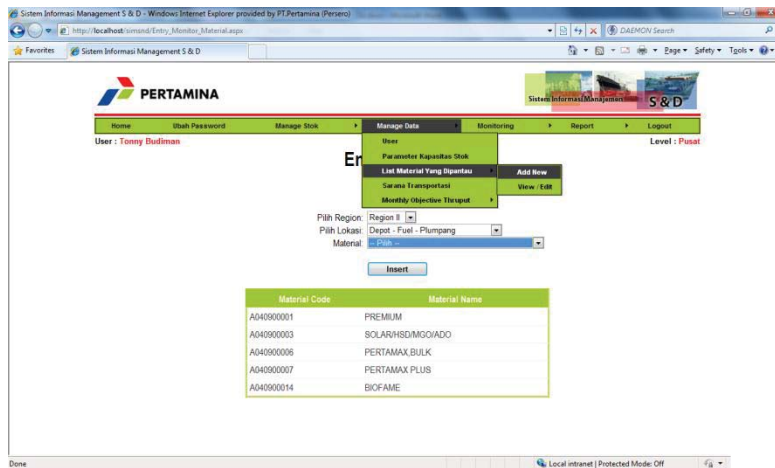
### 4. Halaman Manage Data User

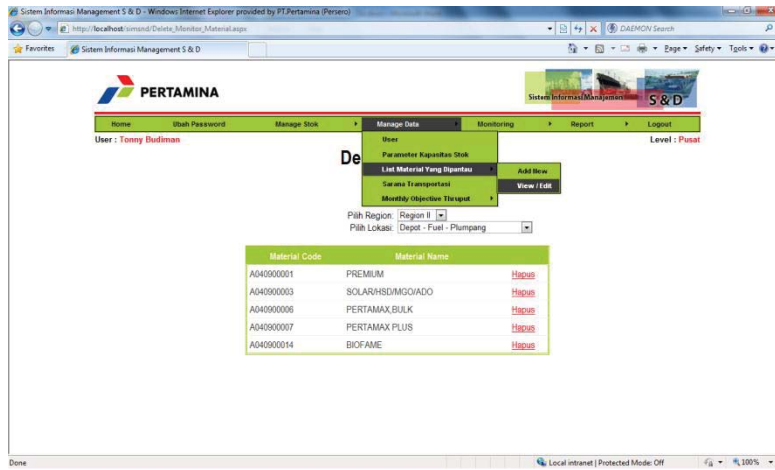


5. Halaman Manage Data Parameter Kapasitas Stok

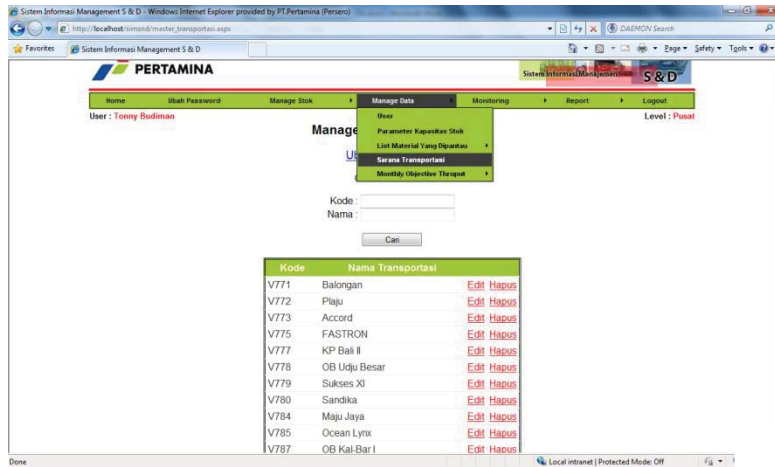


6. Halaman Manage Data Material Yang Dipantau





### 7. Halaman Manage Data Sarana Transportasi



8. Halaman Manage Data Monthly Objective Thruput

The screenshot shows the 'Manage Data' page for 'Monthly Objective Thruput'. The interface includes a navigation menu with options like 'Home', 'Ubah Password', 'Manage Stock', 'Manage Data', 'Monitoring', 'Report', and 'Logout'. The user is identified as 'Tommy Budiman' with a 'Level: Puncak'.

Filters for 'Tahun' (2010), 'Bulan' (Februari), 'DAM' (IA), and 'Lokasi' (Depot - Fuel - Plumpang) are visible. A dropdown menu is open, showing options: 'Parameter Kapasitas Stock', 'List Material Yang Dipantau', 'Sarana Transportasi', and 'Monthly Objective Thruput' (selected). Buttons for 'Entry' and 'View / Edit' are present.

Kode	Produk	MOT Sales	MOT Konsumsi
A04090001	PREMIUM	300.000	
A04090003	SOLAR		
A04090006	PMAX		
A04090007	PMAXPLUS		
A04090014	BIOFAME		

A 'Simpan' button is located at the bottom of the table.

This screenshot shows a detailed grid for 'Monthly Objective Thruput' data. The grid has columns for 'Depot' and various product types: PREMIUM, KERO, BIODAR, BDO, BIOBIO, PMAK, PMAKPLUS, BOPREM, BIODOLAR, BIOFAME, PDEX, APTUR, AVIGAS, and LPG. The rows list various depots, including A203, A216, A237, F201, F202, F203, F204, F205, F206, F207, F208, and F221. The 'Total' row shows a sum of 300.000 for the 'PREMIUM' column and zeros for all other columns.

Legend: S = Sales, K = Konsumsi

9. Halaman Manage Data Stok Pengolahan

**PERTAMINA** Sistem Informasi Manajemen S & D

User : Tommy Budiman Level : Posist

Stok Pengolahan

Kode	Produk	Finish (KL)	UnFinish (KL)	Realisasi Produk (KL)
A04090001	PREMIUM	26.000	1.800	
A04090002	KEROSENE/MINYAK TANAHAP 0706,BULK			
A04090003	SOLAR/HSD/MIGVADO			
A04090004	INDUSTRIAL DIESEL OIL (IDO) BULK			
A04090005	INDUSTRIAL FUEL OIL (MFO) BULK			
A04090006	PERTAMAX BULK			
A04090007	PERTAMAX PLUS			
A04090008	PERTAMINA DEX BULK			

Simpan

10. Halaman Manage Data Stok Plant Khusus

**PERTAMINA** Sistem Informasi Manajemen S & D

User : Tommy Budiman Level : Posist

Stok Plant Khusus

Tanggal : 04/02/2010

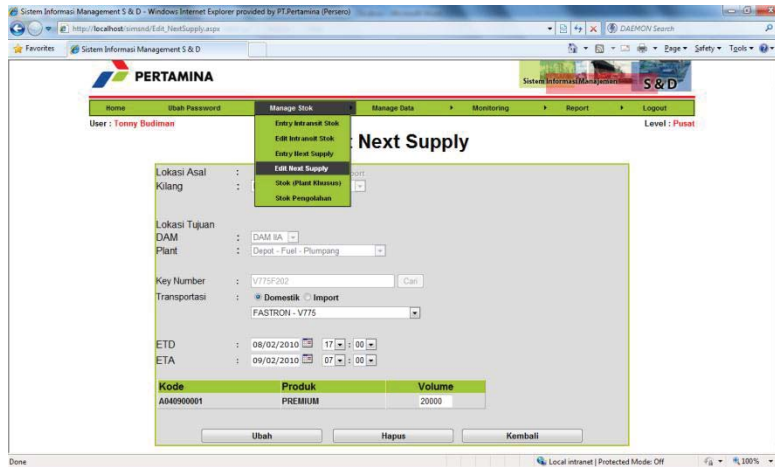
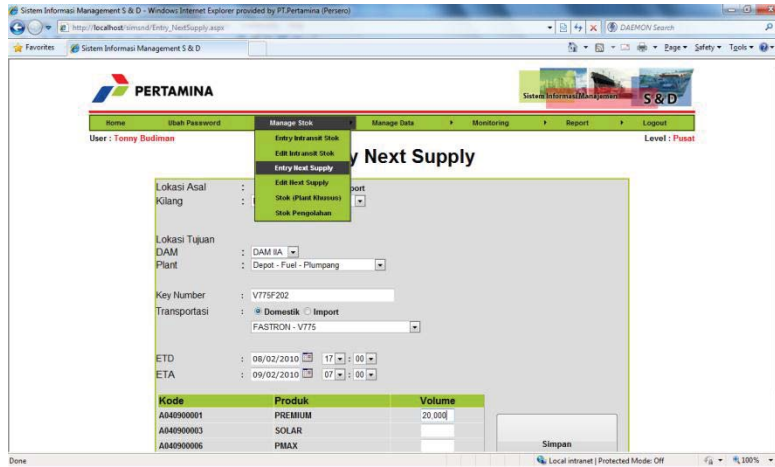
Kategori :  Entry Stock Unit  Entry Stock Khusus Produk Argas

Plant : Depot - Fuel - Dili

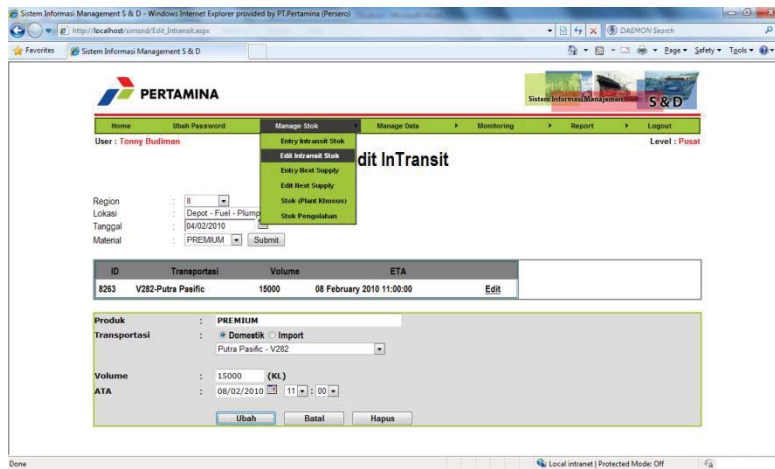
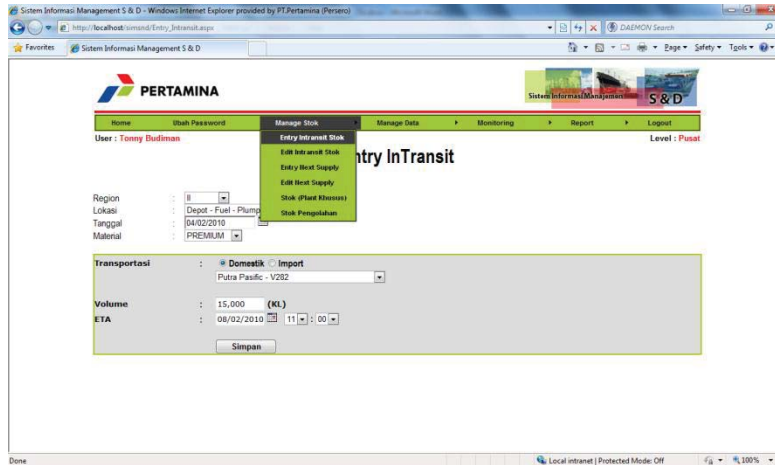
Kode	Produk	Pumpable	UnPumpable
A04090001	PREMIUM	1.000	
A04090002	KEROSENE/MINYAK TANAHAP 0706,BULK		
A04090003	SOLAR/HSD/MIGVADO		

Simpan

11. Halaman Manage Data Next Supply Stok

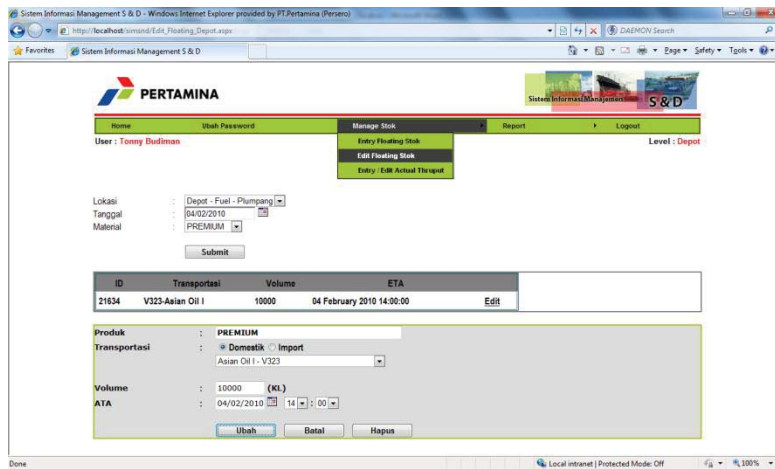
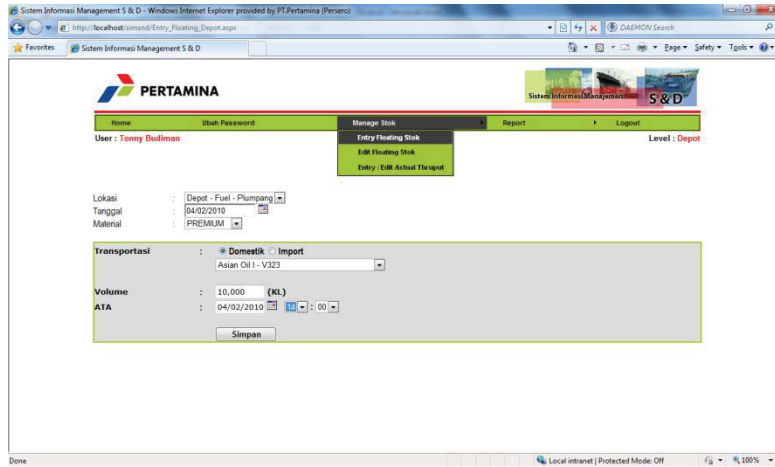


12. Halaman Manage Data Intransit Stok

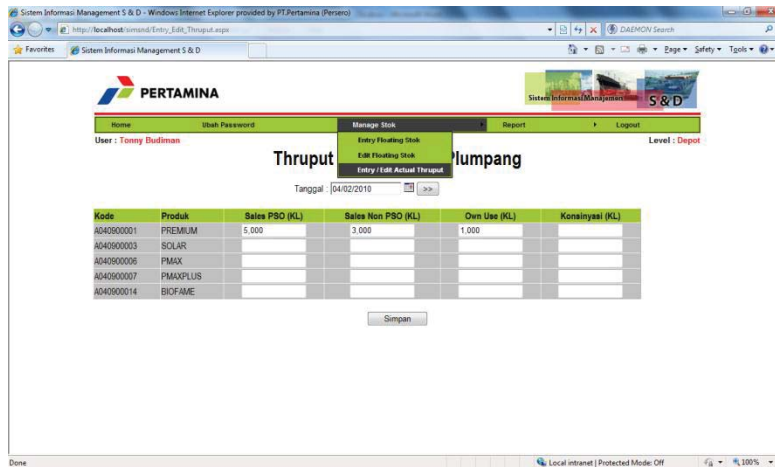




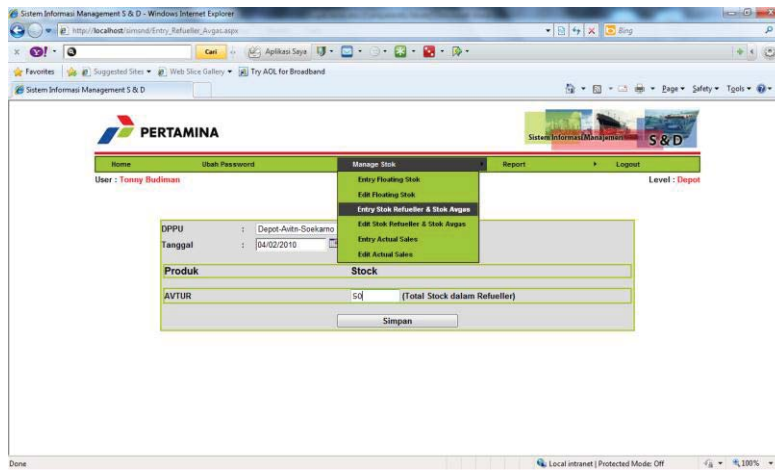
13. Halaman Manage Data Floating Stok

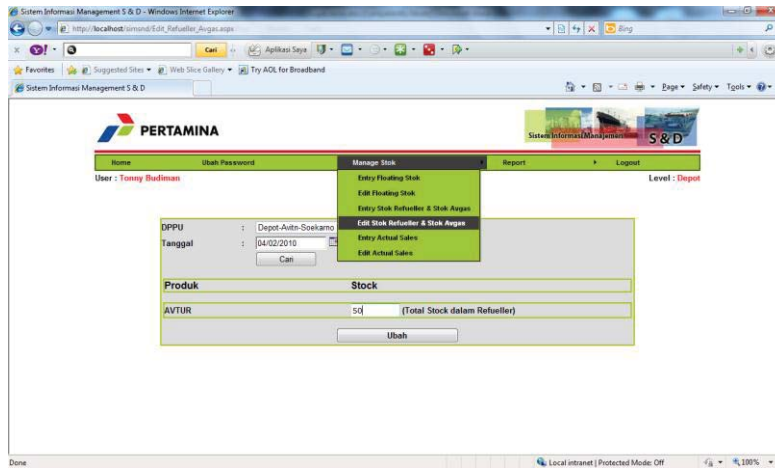


14. Halaman Manage Data Actual Thruput Depot S&D

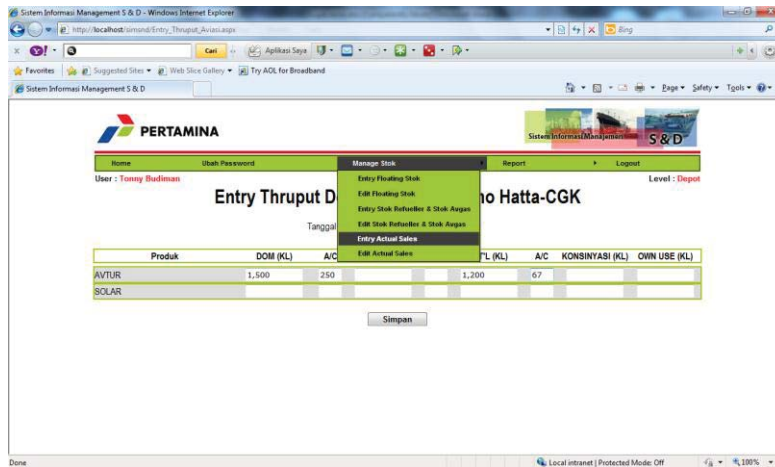


15. Halaman Manage Data Stok Refueller Dan Stok Avgas





16. Halaman Manage Data Actual Thruput Depot Aviasi











## 24. Halaman Laporan Stok Nasional

Sistem Informasi Management S & D - Windows Internet Explorer provided by PT.Pertamina (Persero)

<http://localhost/simand/stoknasional.aspx>

Sistem Informasi Management S & D

User: Tomy Budiman

**Stok Nasional**

Tanggal: 02/04/2010

Tampilkan

Simpan ke Excel

Eksport

Ekspor ke Excel

Ekspor ke Pdf

Ekspor ke Ppt

Eksport ke Word

Print

Print

Print

Print

Print

Print

Print

Print

Print

Print

Print

Print

Print

Print

Print

Print

Print

Ekipand:

BBM  BKM  BKK

Kategori	Premium	Star	Surge	Jan 09/10	DD	MFO	Pertamax	Pertamax Plus	Avia	Argus	Jan 09/10	Jan 09/10
DDK Revised	61,514	0	7,143	17,237	0	0	3,311	0	0	0	6,272	24,574
Stok Perencanaan & Stagi	0	0	0	0	0	0	0	0	0	0	0	0
Stok Fisik	0	0	0	0	0	0	0	0	0	0	0	0
Stok Fisik	105,000	7,000	112,000	0	0	7,000	41,000	0	50,000	0	152,000	0
Stok Fisik	0	0	0	0	0	0	0	0	0	0	0	0
Stok Fisik	1,000	0	0	1,000	0	0	0	0	0	0	1,000	0
Stok Fisik	0	0	0	0	0	0	0	0	0	0	0	0
Stok Fisik	0	0	0	0	0	0	0	0	0	0	0	0
Stok Fisik	0	0	0	0	0	0	0	0	0	0	0	0
Stok Fisik	0	0	0	0	0	0	0	0	0	0	0	0
TOTAL Stok Perencanaan & Stagi	106,000	7,000	113,000	0	0	7,000	41,000	0	50,000	0	153,000	0
Saldo Fisik Stok Perencanaan & Stagi	9,486	0	9,486	4,337	0	1,988	0	14,422	0	7,342	6,376	0
Stok Perencanaan	0	0	0	0	0	0	0	0	0	0	0	0
Saldo Fisik	0	0	0	0	0	0	0	0	0	0	0	0
Saldo Fisik	0	0	0	0	0	0	0	0	0	0	0	0
Saldo Fisik	0	0	0	0	0	0	0	0	0	0	0	0
Saldo Fisik	0	0	0	0	0	0	0	0	0	0	0	0

Local intranet | Protected Mode Off | 75%

## 25. Halaman Monitoring Stok Seluruh Depot Dalam Bentuk Peta

