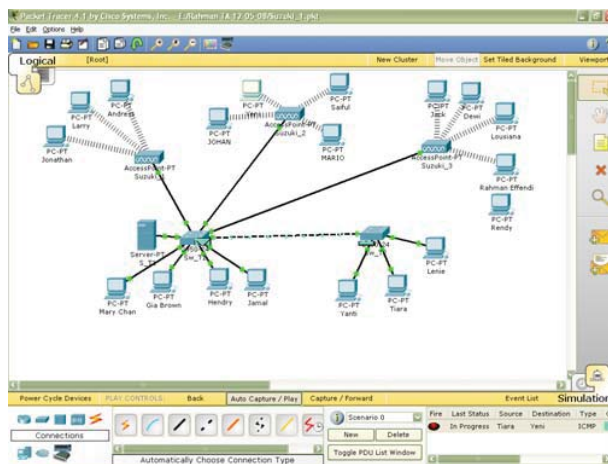
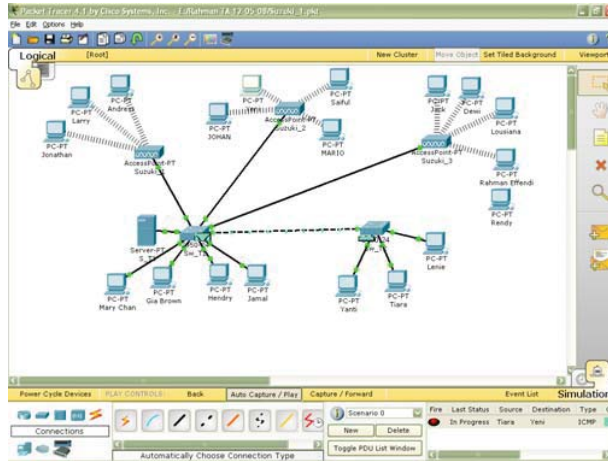
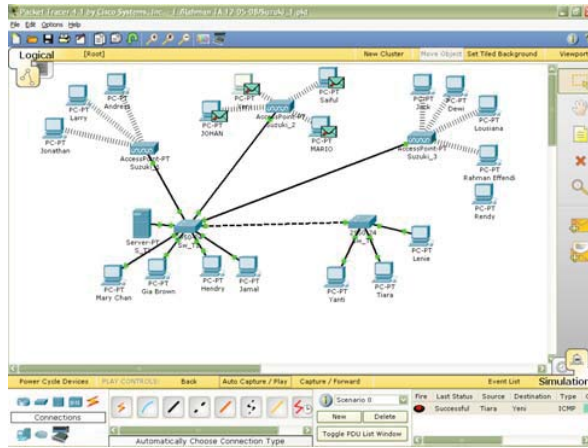
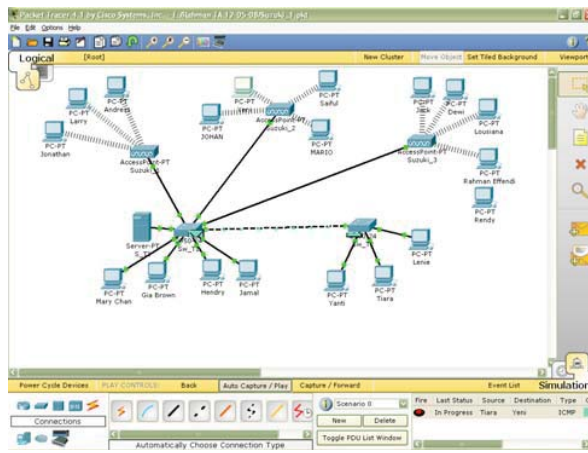


# LAMPIRAN IMPLEMENTASI PENGEMBANGAN JARINGAN WIRELESS





```
Address
Physical Config Desktop

Command Prompt
Reply from 192.168.1.21: bytes=32 time=374ms TTL=128
Reply from 192.168.1.21: bytes=32 time=147ms TTL=128
Reply from 192.168.1.21: bytes=32 time=206ms TTL=128
Reply from 192.168.1.21: bytes=32 time=158ms TTL=128

Ping statistics for 192.168.1.21:
    Packets: Sent = 4, Received = 4, Lost = 0 (0% loss),
    Approximate round trip times in milli-seconds:
        Minimum = 147ms, Maximum = 374ms, Average = 221ms

PC>ping 192.168.1.31

Pinging 192.168.1.31 with 32 bytes of data:

Reply from 192.168.1.31: bytes=32 time=309ms TTL=128
Reply from 192.168.1.31: bytes=32 time=112ms TTL=128
Reply from 192.168.1.31: bytes=32 time=144ms TTL=128
Reply from 192.168.1.31: bytes=32 time=133ms TTL=128

Ping statistics for 192.168.1.31:
    Packets: Sent = 4, Received = 4, Lost = 0 (0% loss),
    Approximate round trip times in milli-seconds:
        Minimum = 112ms, Maximum = 309ms, Average = 174ms

PC>
```

```
Tiara
Physical Config Desktop

Command Prompt
Reply from 192.168.1.12: bytes=32 time=247ms TTL=128
Reply from 192.168.1.12: bytes=32 time=156ms TTL=128
Reply from 192.168.1.12: bytes=32 time=121ms TTL=128
Reply from 192.168.1.12: bytes=32 time=157ms TTL=128

Ping statistics for 192.168.1.12:
    Packets: Sent = 4, Received = 4, Lost = 0 (0% loss),
    Approximate round trip times in milli-seconds:
        Minimum = 121ms, Maximum = 247ms, Average = 180ms

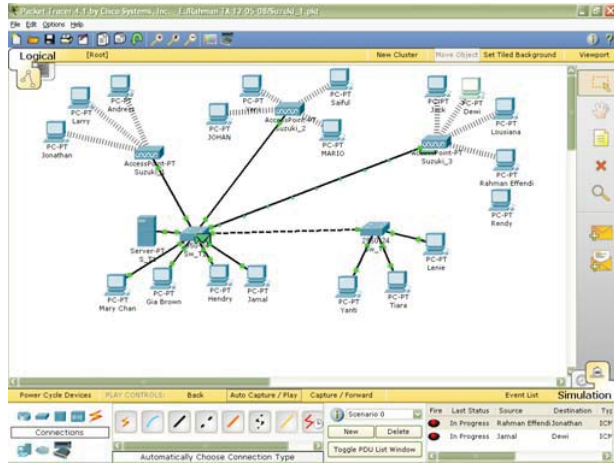
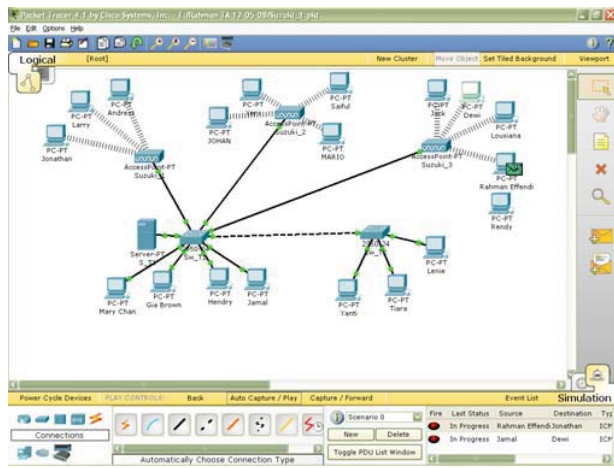
PC>ping 192.168.1.18

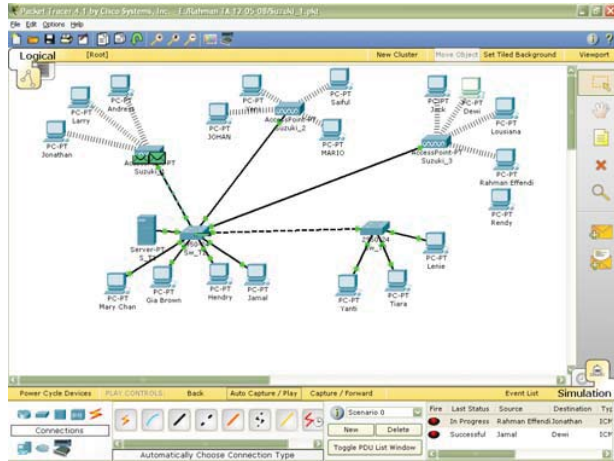
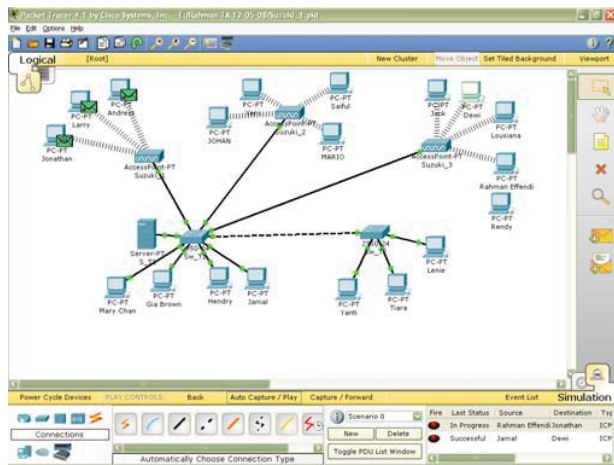
Pinging 192.168.1.18 with 32 bytes of data:

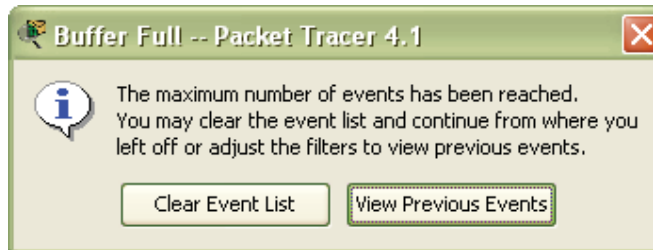
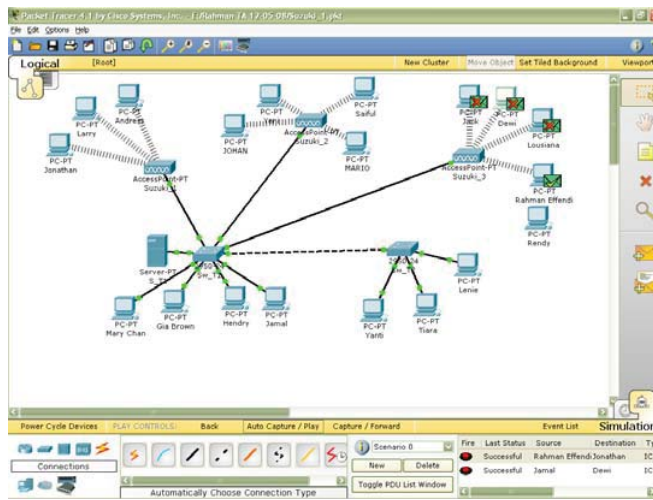
Reply from 192.168.1.18: bytes=32 time=158ms TTL=128
Reply from 192.168.1.18: bytes=32 time=164ms TTL=128
Reply from 192.168.1.18: bytes=32 time=176ms TTL=128
Reply from 192.168.1.18: bytes=32 time=156ms TTL=128

Ping statistics for 192.168.1.18:
    Packets: Sent = 4, Received = 4, Lost = 0 (0% loss),
    Approximate round trip times in milli-seconds:
        Minimum = 156ms, Maximum = 199ms, Average = 177ms

PC>
```







Pada gambar di atas adalah tampilan dari pengembangan jaringan wireless. Dimulai dari koneksi antara jaringan kabel dengan jaringan non kabel. Test koneksi yang dilakukan melalui program Packet Tracer dengan dua cara yaitu:

1. Melalui shared data (dalam bentuk amplop). Apabila hasil test successful maka system jaringan berhasil melakukan shared data tanpa ada masalah.
2. Melalui command prompt lakukan dengan cara ketik ping ip address yang dituju, contohnya:

“ping 192.168.1.21”

Apabila tampil tulisan Reply Connectio maka jaringan berhasil melakukan ping dengan baik.

IP pada jaringan Wireless :

192.168.1.11 – 192.168.1.20 (Wireless\_1)

192.168.1.21 – 192.168.1.30 (Wireless\_2)

IP pada jaringan Wire (kabel):

192.168.1.31 - 192.168.1.40 (LAN\_1)

192.168.1.41 – 192.168.1.50 (LAN\_2)