

## **DAFTAR LAMPIRAN**

Gambar 1 - Grafik Aktiva Lancar dan Hutang Lancar 1997 – 2003 Q3

Gambar 2 - Grafik Total Hutang dan Aktiva Tetap 1997 -2009

Gambar 3 - Grafik Penjualan dan Laba Bersih 1997 – 2003

Gambar 4 - Grafik tingkat Earning Per Share (EPS) 1997 - 2003

Gambar 5 - Grafik Penjualan 1997 - 2003

Gambar 6 - Grafik BEP 1997 – 2003

Gambar 7 - Grafik Debt Ratio 1997 2003

Tabel 1 – Variabel X1,X2,X3,X4,X5

Tabel 2 – Variable Y1,Y2, X1,X2,X3,X4,X5

Tabel 3 – Earning Per Share

Tabel 4 – Basic Earning Power

Tabel 5 – Current Ratio

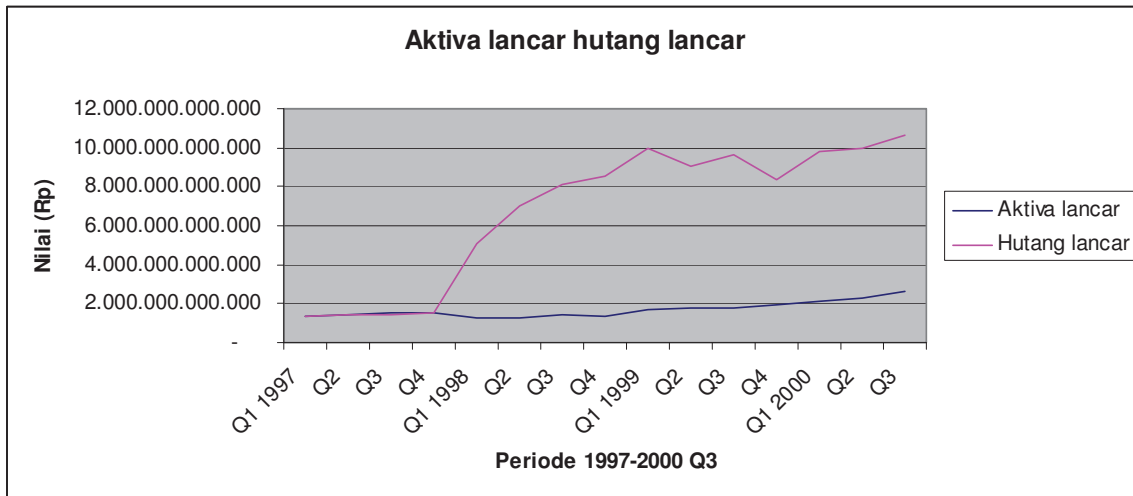
Tabel 6 – Debt Ratio

Tabel 7 – Total Assets Turn Over

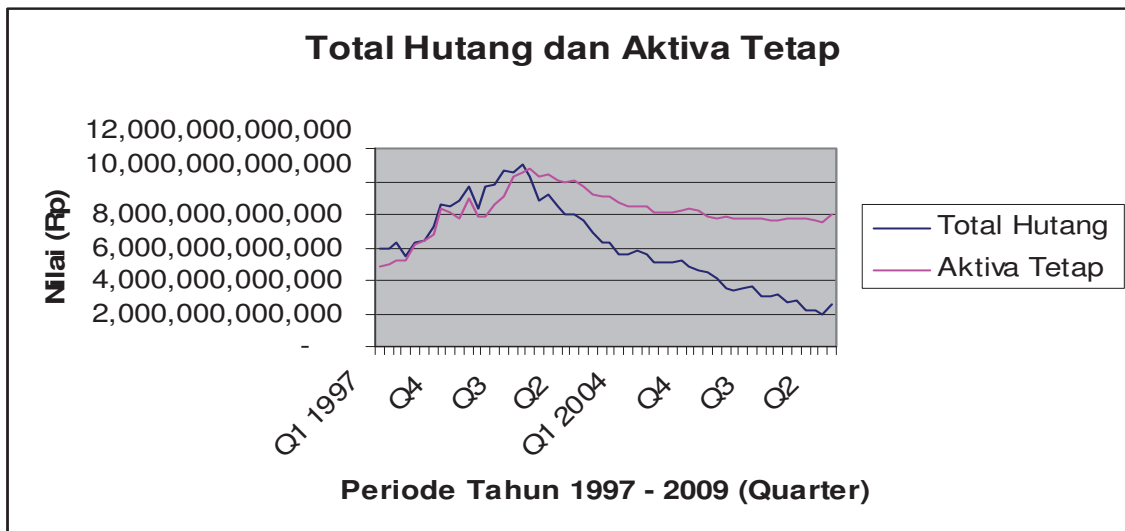
Tabel 8 - Dummy

Tabel 9 – Growth Sales

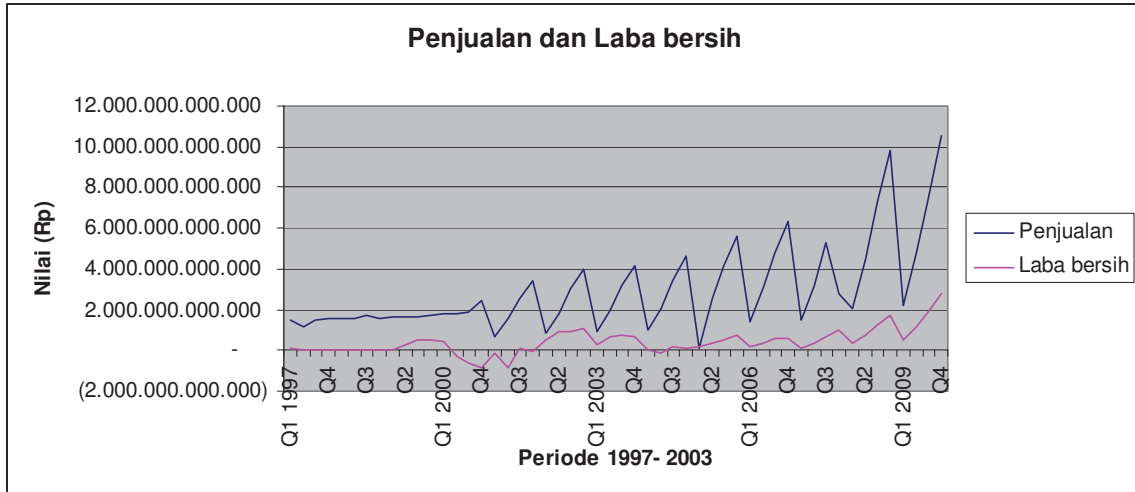
## DAFTAR LAMPIRAN



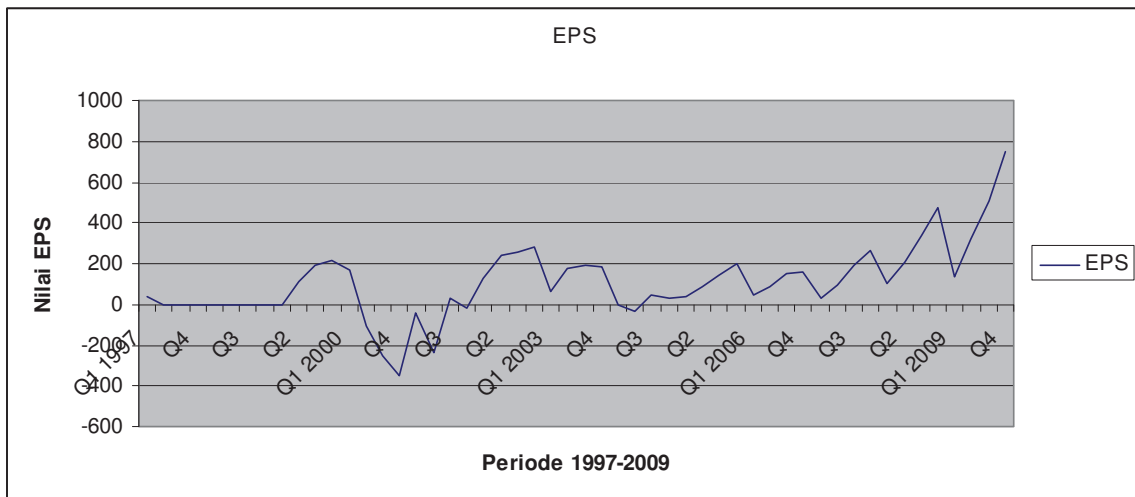
**Gambar 1**  
**Grafik Aktiva Lancar dan Hutang Lancar 1997 – 2003 Q3**



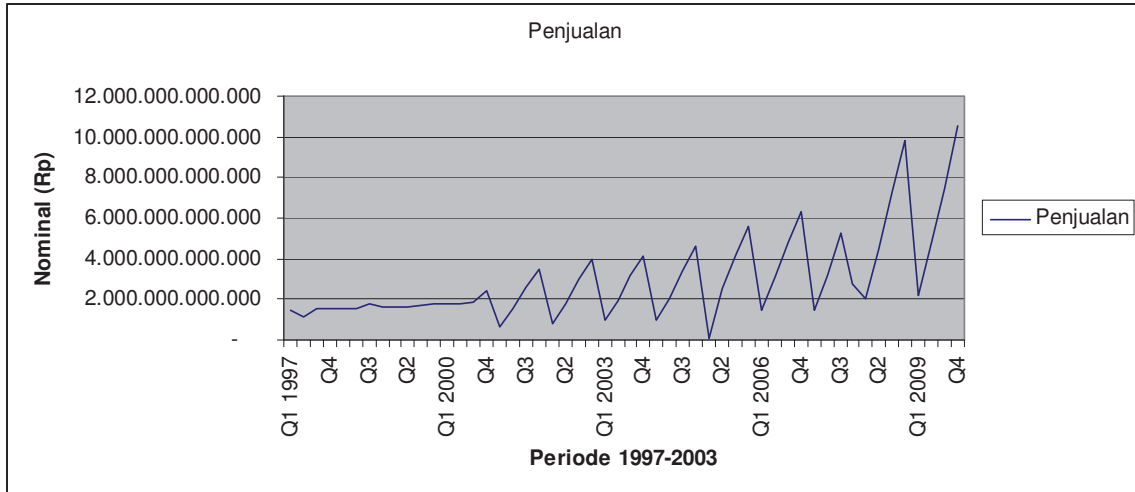
**Gambar 2**  
**Grafik Total Hutang dan Aktiva Tetap 1997 -2009**



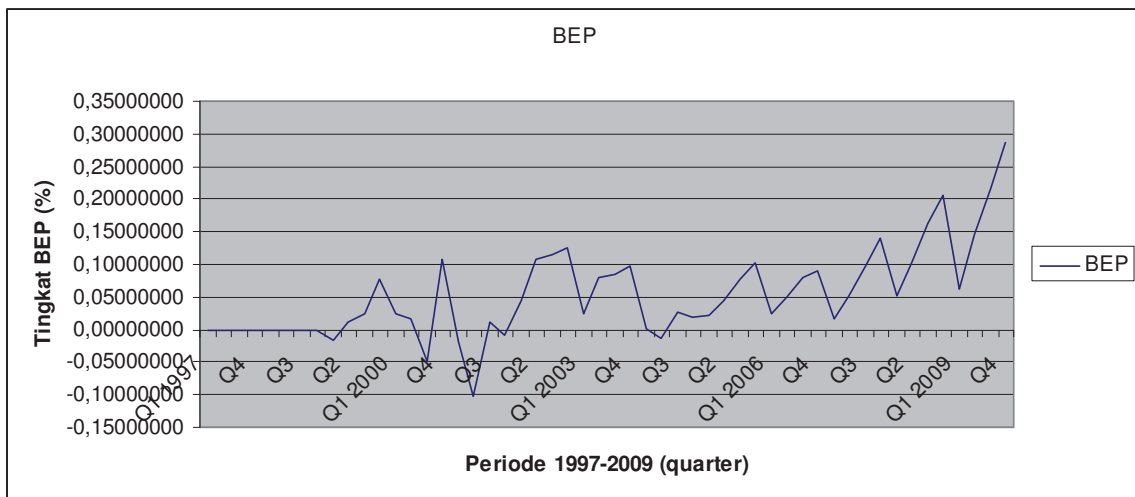
**Gambar 3**  
**Grafik Penjualan dan Laba Bersih 1997 – 2003**



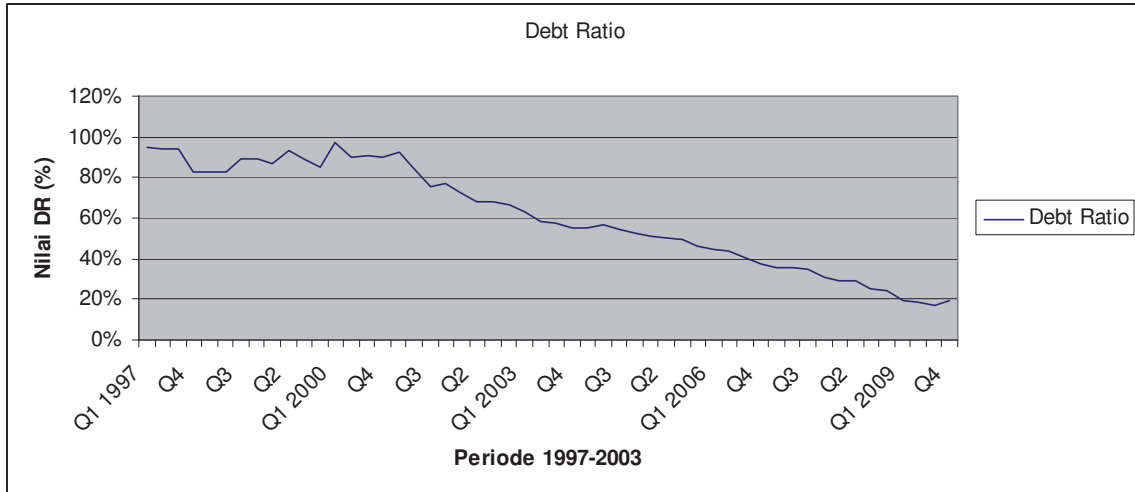
**Gambar 4**  
**Grafik tingkat Earning Per Share (EPS) 1997 - 2003**



**Gambar 5**  
**Grafik Penjualan 1997 - 2003.**



**Gambar 6.**  
**Grafik BEP 1997 - 2003**



**Gambar 7.**  
**Grafik Debt Ratio 1997 2003**

TABEL 1

|         | (Y1)      | (Y2)        | X1       | (X2)     | (X3)     | (X4)    | (X5)      |
|---------|-----------|-------------|----------|----------|----------|---------|-----------|
| Tahun   | epst-1    | bept-1      | CR       | DR       | TATOt-1  | (DUMMY) | Δ Sales   |
| Q1 1997 | 41,95304  | 0,00002123  | 1,039685 | 0,945713 | 0,233338 | 0       | 0,018137  |
| Q2 1997 | -0,114493 | 0,00002370  | 0,999252 | 0,940615 | 0,181575 | 0       | -0,265883 |
| Q3 1997 | -0,126504 | 0,00002319  | 1,052634 | 0,937741 | 0,22546  | 0       | 0,234972  |
| Q4 1997 | -0,156557 | 0,00002396  | 0,976981 | 0,823391 | 0,235384 | 0       | 0,043856  |
| Q1 1998 | -0,227372 | -0,00002401 | 0,258502 | 0,829803 | 0,206453 | 0       | -0,010566 |
| Q2 1998 | -0,321913 | -0,00003290 | 0,185758 | 0,830295 | 0,20266  | 0       | -4,94E-05 |
| Q3 1998 | -0,414508 | -0,00004368 | 0,178754 | 0,890861 | 0,213478 | 0       | 0,112742  |
| Q4 1998 | -0,436124 | -0,00003962 | 0,153453 | 0,889036 | 0,164914 | 0       | -0,102799 |
| Q1 1999 | -0,41866  | -0,01510134 | 0,166926 | 0,864907 | 0,163958 | 0       | 0,008256  |
| Q2 1999 | 109,339   | 0,01047543  | 0,197257 | 0,929179 | 0,169311 | 0       | 0,008416  |
| Q3 1999 | 195,86    | 0,02420788  | 0,186554 | 0,891563 | 0,155532 | 0       | 0,038542  |
| Q4 1999 | 216,6122  | 0,07682247  | 0,232518 | 0,848759 | 0,178555 | 0       | 0,044022  |
| Q1 2000 | 167,7655  | 0,02426579  | 0,217654 | 0,974969 | 0,180257 | 0       | 0,023466  |
| Q2 2000 | -110,0449 | 0,01739156  | 0,225907 | 0,90303  | 0,164528 | 0       | -0,007657 |
| Q3 2000 | -251,4714 | -0,05017880 | 0,249659 | 0,909199 | 0,160735 | 0       | 0,052007  |
| Q4 2000 | -351,8361 | 0,10759210  | 3,431446 | 0,90366  | 0,210144 | 0       | 0,229725  |
| Q1 2001 | -40,34265 | -0,01815777 | 3,089289 | 0,92031  | 0,057119 | 1       | -2,581427 |
| Q2 2001 | -236,1191 | -0,10273038 | 3,188985 | 0,83943  | 0,128241 | 1       | 0,567589  |
| Q3 2001 | 32,10823  | 0,01249338  | 3,573904 | 0,750128 | 0,217668 | 1       | 0,385363  |
| Q4 2001 | -17,14892 | -0,00888929 | 2,121227 | 0,768392 | 0,289472 | 1       | 0,255291  |
| Q1 2002 | 130,8855  | 0,04446032  | 2,331618 | 0,723529 | 0,071153 | 1       | -3,128614 |
| Q2 2002 | 238,745   | 0,10812525  | 2,438948 | 0,684786 | 0,156768 | 1       | 0,540629  |
| Q3 2002 | 258,482   | 0,11486672  | 2,454953 | 0,684018 | 0,255371 | 1       | 0,394923  |
| Q4 2002 | 282,7993  | 0,12599107  | 2,904486 | 0,667026 | 0,345204 | 1       | 0,237813  |
| Q1 2003 | 62,91488  | 0,02353509  | 2,516239 | 0,629657 | 0,085862 | 1       | -3,194145 |
| Q2 2003 | 176,6717  | 0,07887538  | 2,617623 | 0,584571 | 0,181754 | 1       | 0,521258  |
| Q3 2003 | 193,4595  | 0,08422672  | 2,338307 | 0,577823 | 0,292185 | 1       | 0,379048  |
| Q4 2003 | 182,083   | 0,09695025  | 1,869028 | 0,553137 | 0,409823 | 1       | 0,238353  |
| Q1 2004 | -0,814767 | 0,00056146  | 1,856349 | 0,551615 | 0,094442 | 1       | -3,357449 |
| Q2 2004 | -31,86302 | -0,01465242 | 1,748276 | 0,569519 | 0,198197 | 1       | 0,530608  |
| Q3 2004 | 49,70204  | 0,02743171  | 1,612983 | 0,542052 | 0,329951 | 1       | 0,401756  |
| Q4 2004 | 31,51756  | 0,01888955  | 1,415417 | 0,52351  | 0,472367 | 1       | 0,263816  |
| Q1 2005 | 40,58202  | 0,02242705  | 2,305381 | 0,512172 | 0,012196 | 1       | -37,38785 |
| Q2 2005 | 83,56441  | 0,04518762  | 2,428629 | 0,504251 | 0,253341 | 1       | 0,952611  |
| Q3 2005 | 146,2189  | 0,07641213  | 2,555376 | 0,498239 | 0,402248 | 1       | 0,39092   |
| Q4 2005 | 200,9343  | 0,10229433  | 2,518875 | 0,46572  | 0,530766 | 1       | 0,255134  |
| Q1 2006 | 44,68182  | 0,02323617  | 2,752969 | 0,443155 | 0,137462 | 1       | -2,910908 |
| Q2 2006 | 88,27981  | 0,04871137  | 1,969446 | 0,436009 | 0,298705 | 1       | 0,533217  |
| Q3 2006 | 151,5371  | 0,07987364  | 2,435414 | 0,407423 | 0,475855 | 1       | 0,364384  |
| Q4 2006 | 161,0336  | 0,08982829  | 2,144478 | 0,371475 | 0,659006 | 1       | 0,238055  |
| Q1 2007 | 30,55986  | 0,01713844  | 2,417008 | 0,358285 | 0,154568 | 1       | -3,272143 |
| Q2 2007 | 97,8328   | 0,05299490  | 2,323168 | 0,357352 | 0,322664 | 1       | 0,531034  |
| Q3 2007 | 190,009   | 0,09821190  | 2,555304 | 0,35261  | 0,517805 | 1       | 0,405014  |
| Q4 2007 | 267,2172  | 0,14154231  | 2,960178 | 0,306365 | 0,274924 | 1       | -0,926997 |
| Q1 2008 | 102,4188  | 0,05187433  | 1,255602 | 0,294196 | 0,197798 | 1       | -0,341613 |
| Q2 2008 | 209,3709  | 0,10242494  | 1,357289 | 0,295782 | 0,417589 | 1       | 0,542793  |
| Q3 2008 | 334,4911  | 0,16389276  | 1,630629 | 0,253987 | 0,676023 | 1       | 0,380734  |
| Q4 2008 | 474,1622  | 0,20668446  | 1,785742 | 0,244976 | 0,86655  | 1       | 0,258809  |
| Q1 2009 | 136,5626  | 0,06212897  | 2,512001 | 0,19717  | 0,19448  | 1       | -3,472857 |
| Q2 2009 | 318,4998  | 0,14430158  | 2,719027 | 0,188498 | 0,425777 | 1       | 0,544024  |
| Q3 2009 | 507,5488  | 0,21598619  | 3,574311 | 0,166542 | 0,629239 | 1       | 0,354089  |

Sumber data : diolah sendiri

TABEL 2

| Tahun   | Δ EPS (Y1)   | EPS (Y1 alternatif) | Y1           | Y2          | Y1          | Y2          | bept-1 X7   | X1          | X2           | X4           | X5           | X3         |
|---------|--------------|---------------------|--------------|-------------|-------------|-------------|-------------|-------------|--------------|--------------|--------------|------------|
|         |              |                     | epst-1 X6    | BEP (Y2)    | epst-1 X6   | BEP (Y2)    | X7          | CR (X1)     | DR (X2)      | (DUMMY) (X4) | Δ Sales (X5) | TATOT-1 X8 |
| Q1 1997 | 0,9456037    | 41,95304039         | 41,95304039  | 0,00002123  | 0,00002123  | 0,00002123  | 0,00002123  | 1,039684742 | 0,945712549  | 0            | 0,018136654  | 0,23333338 |
| Q2 1997 | 367,4232178  | -0,114493401        | -0,114493401 | 0,00002370  | 0,00002370  | 0,00002370  | 0,00002370  | 0,992651524 | 0,9406145933 | 0            | -0,26588346  | 0,181575   |
| Q3 1997 | 0,09494698   | -0,126504315        | -0,126504315 | 0,00002319  | 0,00002319  | 0,00002319  | 0,00002319  | 0,052634271 | 0,937740993  | 0            | 0,234971875  | 0,22546    |
| Q4 1997 | 0,191960944  | -0,156557179        | -0,156557179 | 0,00002396  | 0,00002396  | 0,00002396  | 0,00002396  | 0,976981049 | 0,823391357  | 0            | 0,043856068  | 0,235384   |
| Q1 1998 | 0,311448092  | -0,227371643        | -0,227371643 | -0,00002401 | -0,00002401 | -0,00002401 | -0,00002401 | 0,258501888 | 0,829802651  | 0            | -0,01056584  | 0,206453   |
| Q2 1998 | 0,293686045  | -0,321912999        | -0,321912999 | -0,00003290 | -0,00003290 | -0,00003290 | -0,00003290 | 0,185757915 | 0,830295219  | 0            | -4,9403E-05  | 0,20266    |
| Q3 1998 | 0,22338452   | -0,414507574        | -0,414507574 | -0,00004368 | -0,00004368 | -0,00004368 | -0,00004368 | 0,178753868 | 0,890861082  | 0            | 0,11274244   | 0,213478   |
| Q4 1998 | 0,049563923  | -0,436123569        | -0,436123569 | -0,00003962 | -0,00003962 | -0,00003962 | -0,00003962 | 0,153452542 | 0,89903561   | 0            | -0,10279888  | 0,164914   |
| Q1 1999 | -0,04171328  | -0,418659873        | -0,418659873 | -0,01510134 | -0,01510134 | -0,01510134 | -0,01510134 | 0,166925993 | 0,864906722  | 0            | 0,008256168  | 0,163958   |
| Q2 1999 | 1,003829008  | 109,3389848         | 109,3389848  | 0,01047543  | 0,01047543  | 0,01047543  | 0,01047543  | 0,197256845 | 0,929178762  | 0            | 0,008415547  | 0,169311   |
| Q3 1999 | 0,441749182  | 195,8599634         | 195,8599634  | 0,02420788  | 0,02420788  | 0,02420788  | 0,02420788  | 0,186553864 | 0,891563435  | 0            | 0,03854162   | 0,155532   |
| Q4 1999 | 0,095803558  | 216,6121812         | 216,6121812  | 0,07682247  | 0,07682247  | 0,07682247  | 0,07682247  | 0,232517941 | 0,848758842  | 0            | 0,044022435  | 0,178555   |
| Q1 2000 | -0,291160713 | 167,7654679         | 167,7654679  | 0,02426579  | 0,02426579  | 0,02426579  | 0,02426579  | 0,217653769 | 0,974969246  | 0            | 0,023466121  | 0,180257   |
| Q2 2000 | 2,54518333   | -110,0449003        | -110,0449003 | 0,01739156  | 0,01739156  | 0,01739156  | 0,01739156  | 0,225906581 | 0,903029582  | 0            | -0,00765664  | 0,164528   |
| Q3 2000 | 0,562395968  | -251,4714039        | -251,4714039 | -0,05017880 | -0,05017880 | -0,05017880 | -0,05017880 | 0,249665877 | 0,909198665  | 0            | 0,052007153  | 0,160735   |
| Q4 2000 | 0,285259702  | -351,8360509        | -351,8360509 | 0,10759210  | 0,10759210  | 0,10759210  | 0,10759210  | 3,431445693 | 0,903660373  | 0            | 0,22972486   | 0,210144   |
| Q1 2001 | -7,721194067 | -40,34264668        | -40,34264668 | -0,01815777 | -0,01815777 | -0,01815777 | -0,01815777 | 3,0892885   | 0,920310225  | 1            | -2,58142702  | 0,057119   |
| Q2 2001 | 0,829142823  | -236,1191223        | -236,1191223 | -0,10273038 | -0,10273038 | -0,10273038 | -0,10273038 | 3,188985237 | 0,839429819  | 1            | 0,567588941  | 0,128241   |
| Q3 2001 | 8,353850081  | 32,10823169         | 32,10823169  | 0,01249338  | 0,01249338  | 0,01249338  | 0,01249338  | 3,573903978 | 0,75012808   | 1            | 0,385362859  | 0,217668   |
| Q4 2001 | 2,872318412  | -17,14891627        | -17,14891627 | -0,00888929 | -0,00888929 | -0,00888929 | -0,00888929 | 2,121226956 | 0,768392033  | 1            | 0,255290884  | 0,289472   |
| Q1 2002 | 1,131022726  | 130,885501          | 130,885501   | 0,04446032  | 0,04446032  | 0,04446032  | 0,04446032  | 2,331618382 | 0,723529444  | 1            | -3,1286142   | 0,071153   |
| Q2 2002 | 0,45177699   | 238,7449972         | 238,7449972  | 0,10812525  | 0,10812525  | 0,10812525  | 0,10812525  | 2,438994783 | 0,684786473  | 1            | 0,540629039  | 0,156768   |
| Q3 2002 | 0,07635728   | 258,481978          | 258,481978   | 0,11486672  | 0,11486672  | 0,11486672  | 0,11486672  | 2,454953386 | 0,684017857  | 1            | 0,394923064  | 0,255371   |
| Q4 2002 | 0,08598788   | 282,7992894         | 282,7992894  | 0,12599107  | 0,12599107  | 0,12599107  | 0,12599107  | 2,90448641  | 0,66702629   | 1            | 0,237812797  | 0,345204   |
| Q1 2003 | -3,494950463 | 62,91488454         | 62,91488454  | 0,02353509  | 0,02353509  | 0,02353509  | 0,02353509  | 2,516238887 | 0,629656523  | 1            | -3,19414468  | 0,085862   |
| Q2 2003 | 0,643888109  | 176,6716759         | 176,6716759  | 0,07887538  | 0,07887538  | 0,07887538  | 0,07887538  | 2,617623276 | 0,584457088  | 1            | 0,521257978  | 0,181754   |
| Q3 2003 | 0,086777099  | 193,4595329         | 193,4595329  | 0,08422672  | 0,08422672  | 0,08422672  | 0,08422672  | 2,338306841 | 0,577823293  | 1            | 0,379047829  | 0,292185   |
| Q4 2003 | -0,062479907 | 182,0830038         | 182,0830038  | 0,09695025  | 0,09695025  | 0,09695025  | 0,09695025  | 1,869027838 | 0,55313668   | 1            | 0,23835308   | 0,409823   |
| Q1 2004 | 224,4786172  | -0,814767006        | -0,814767006 | 0,00056146  | 0,00056146  | 0,00056146  | 0,00056146  | 1,856349289 | 0,551615015  | 1            | -3,35744887  | 0,094442   |
| Q2 2004 | 0,974429074  | -31,86302326        | -31,86302326 | -0,01465242 | -0,01465242 | -0,01465242 | -0,01465242 | 1,748275622 | 0,569519375  | 1            | 0,530608206  | 0,198197   |
| Q3 2004 | 1,641080853  | 49,70203543         | 49,70203543  | 0,02743171  | 0,02743171  | 0,02743171  | 0,02743171  | 1,612983484 | 0,542051985  | 1            | 0,401756472  | 0,329951   |
| Q4 2004 | -0,576963496 | 31,51755609         | 31,51755609  | 0,01888955  | 0,01888955  | 0,01888955  | 0,01888955  | 1,415417323 | 0,523509612  | 1            | 0,263816342  | 0,472367   |
| Q1 2005 | 0,223361548  | 40,58201857         | 40,58201857  | 0,02242705  | 0,02242705  | 0,02242705  | 0,02242705  | 2,305380987 | 0,512172256  | 1            | -37,3878495  | 0,012196   |
| Q2 2005 | 0,514362411  | 83,56440998         | 83,56440998  | 0,04518762  | 0,04518762  | 0,04518762  | 0,04518762  | 2,428629325 | 0,504250874  | 1            | 0,95261093   | 0,253341   |
| Q3 2005 | 0,428497964  | 146,2189191         | 146,2189191  | 0,07641213  | 0,07641213  | 0,07641213  | 0,07641213  | 2,553376024 | 0,498238579  | 1            | 0,390919685  | 0,402248   |
| Q4 2005 | 0,272304993  | 200,9343443         | 200,9343443  | 0,10229433  | 0,10229433  | 0,10229433  | 0,10229433  | 2,518874736 | 0,465719529  | 1            | 0,255133809  | 0,530766   |
| Q1 2006 | -3,497004807 | 44,68181666         | 44,68181666  | 0,02323617  | 0,02323617  | 0,02323617  | 0,02323617  | 2,752968584 | 0,443155044  | 1            | -2,91090842  | 0,137462   |
| Q2 2006 | 0,493861432  | 88,27981            | 88,27981     | 0,04871137  | 0,04871137  | 0,04871137  | 0,04871137  | 1,969445965 | 0,436009465  | 1            | 0,533216697  | 0,298705   |
| Q3 2006 | 0,417437622  | 151,5370944         | 151,5370944  | 0,07987364  | 0,07987364  | 0,07987364  | 0,07987364  | 2,435413722 | 0,407423142  | 1            | 0,36438414   | 0,475855   |
| Q4 2006 | 0,058972237  | 161,0336065         | 161,0336065  | 0,08982829  | 0,08982829  | 0,08982829  | 0,08982829  | 2,144478302 | 0,371474668  | 1            | 0,238054609  | 0,659006   |
| Q1 2007 | -4,269447667 | 30,55986446         | 30,55986446  | 0,01713844  | 0,01713844  | 0,01713844  | 0,01713844  | 2,417008343 | 0,358284986  | 1            | -3,27214325  | 0,154568   |
| Q2 2007 | 0,687631705  | 97,83279839         | 97,83279839  | 0,05299490  | 0,05299490  | 0,05299490  | 0,05299490  | 2,323167911 | 0,357351675  | 1            | 0,531033707  | 0,322664   |
| Q3 2007 | 0,48511504   | 190,0090427         | 190,0090427  | 0,09821190  | 0,09821190  | 0,09821190  | 0,09821190  | 2,555304407 | 0,352610078  | 1            | 0,405014266  | 0,517805   |
| Q4 2007 | 0,288934098  | 267,2172047         | 267,2172047  | 0,14154231  | 0,14154231  | 0,14154231  | 0,14154231  | 2,960177841 | 0,306365401  | 1            | -0,92699744  | 0,274924   |

TABEL 2

| Tahun   | Δ EPS<br>(Y1) | Y1                     |              | Y2         | X1         | X2          | X3          | X4 | X5          | X3          |             |
|---------|---------------|------------------------|--------------|------------|------------|-------------|-------------|----|-------------|-------------|-------------|
|         |               | EPS<br>(Y1 alternatif) | epst-1<br>X6 |            |            |             |             |    |             |             | BEP<br>(Y2) |
| Q1 2008 | -1.609064889  | 102,4187654            | 102,4187654  | 0,05187433 | 0,05187433 | 1,255601765 | 0,294196493 | 1  | -0,34161337 | 0,197797597 | 0,197798    |
| Q2 2008 | 0,510826265   | 209,3709412            | 209,3709412  | 0,10242494 | 0,10242494 | 1,357288579 | 0,295782384 | 1  | 0,542793363 | 0,417588613 | 0,417589    |
| Q3 2008 | 0,374061319   | 334,4911373            | 334,4911373  | 0,16389276 | 0,16389276 | 1,630629083 | 0,253986648 | 1  | 0,380734154 | 0,676022794 | 0,676023    |
| Q4 2008 | 0,294563897   | 474,1622041            | 474,1622041  | 0,20668446 | 0,20668446 | 1,785741722 | 0,244976361 | 1  | 0,258809269 | 0,866550221 | 0,86655     |
| Q1 2009 | -2,472123322  | 136,5626045            | 136,5626045  | 0,06212897 | 0,06212897 | 2,512001168 | 0,197169608 | 1  | -3,4728573  | 0,194479839 | 0,19448     |
| Q2 2009 | 0,571231762   | 318,4998151            | 318,4998151  | 0,14430158 | 0,14430158 | 2,719027134 | 0,188498454 | 1  | 0,54402365  | 0,42577715  | 0,425777    |
| Q3 2009 | 0,372474453   | 507,5487632            | 507,5487632  | 0,21598619 | 0,21598619 | 3,574311123 | 0,166541926 | 1  | 0,354089013 | 0,629238543 | 0,629239    |

Sumber data : diolah sendiri



TABEL 3

| Kwartal | Laba Bersih   | Jumlah Lembar Saham Beredar | EPS (Y)      | Δ EPS (Y1)  |
|---------|---------------|-----------------------------|--------------|-------------|
| Q1 1997 | 101293657656  | 2.414.453.320               | 41,95304039  | 0,99456037  |
| Q2 1997 | -276438972    | 2.414.453.320               | -0,114493401 | 367,4232178 |
| Q3 1997 | -305438763    | 2.414.453.320               | -0,126504315 | 0,094944698 |
| Q4 1997 | -378000000    | 2.414.453.320               | -0,156557179 | 0,191960944 |
| Q1 1998 | -548978219    | 2.414.453.320               | -0,227371643 | 0,311448092 |
| Q2 1998 | -777243909    | 2.414.453.320               | -0,321912999 | 0,293686045 |
| Q3 1998 | -1000809189   | 2.414.453.320               | -0,414507574 | 0,22338452  |
| Q4 1998 | -1053000000   | 2.414.453.320               | -0,436123569 | 0,049563923 |
| Q1 1999 | -1010834720   | 2.414.453.320               | -0,418659873 | -0,04171333 |
| Q2 1999 | 263993874832  | 2.414.453.320               | 109,3389848  | 1,003829008 |
| Q3 1999 | 472894738932  | 2.414.453.320               | 195,8599634  | 0,441749182 |
| Q4 1999 | 523000000000  | 2.414.453.320               | 216,6121812  | 0,095803558 |
| Q1 2000 | 416782511172  | 2.484.316.447               | 167,7654679  | -0,29116071 |
| Q2 2000 | -273386355623 | 2.484.316.447               | -110,0449003 | 2,524518333 |
| Q3 2000 | -624734544758 | 2.484.316.447               | -251,4714039 | 0,562395968 |
| Q4 2000 | -874072087782 | 2.484.316.447               | -351,8360509 | 0,285259702 |
| Q1 2001 | -148510299772 | 3.681.223.519               | -40,34264668 | -7,72119407 |
| Q2 2001 | -869207266122 | 3.681.223.519               | -236,1191223 | 0,829142823 |
| Q3 2001 | 118197577669  | 3.681.223.519               | 32,10823169  | 8,353850081 |
| Q4 2001 | -63128993915  | 3.681.223.519               | -17,14891627 | 2,872318412 |
| Q1 2002 | 481818784407  | 3.681.223.519               | 130,885501   | 1,131022276 |
| Q2 2002 | 878873698635  | 3.681.223.519               | 238,7449972  | 0,45177699  |
| Q3 2002 | 951529936680  | 3.681.223.519               | 258,481978   | 0,07635728  |
| Q4 2002 | 1041047395230 | 3.681.223.519               | 282,7992894  | 0,08598788  |
| Q1 2003 | 231604267318  | 3.681.231.699               | 62,91488454  | -3,49495046 |
| Q2 2003 | 650369373736  | 3.681.231.699               | 176,6716759  | 0,643888109 |
| Q3 2003 | 712169364918  | 3.681.231.699               | 193,4595329  | 0,086777099 |
| Q4 2003 | 670289725534  | 3.681.231.699               | 182,0830038  | -0,06247991 |
| Q1 2004 | -2999346130   | 3.681.231.699               | -0,814767006 | 224,4786172 |
| Q2 2004 | -117295171238 | 3.681.231.699               | -31,86302326 | 0,974429074 |
| Q3 2004 | 182964708341  | 3.681.231.699               | 49,70203543  | 1,641080853 |
| Q4 2004 | 116023426558  | 3.681.231.699               | 31,51755609  | -0,5769635  |
| Q1 2005 | 149391813158  | 3.681.231.699               | 40,58201857  | 0,223361548 |
| Q2 2005 | 307619954933  | 3.681.231.699               | 83,56440998  | 0,514362411 |
| Q3 2005 | 538265720037  | 3.681.231.699               | 146,2189191  | 0,428497964 |
| Q4 2005 | 739685877628  | 3.681.231.699               | 200,9343443  | 0,272304993 |
| Q1 2006 | 164484119849  | 3.681.231.699               | 44,68181666  | -3,49700481 |
| Q2 2006 | 324978434949  | 3.681.231.699               | 88,27981     | 0,493861432 |
| Q3 2006 | 557843155486  | 3.681.231.699               | 151,5370944  | 0,417437622 |
| Q4 2006 | 592802016775  | 3.681.231.699               | 161,0336065  | 0,058972237 |
| Q1 2007 | 112497941755  | 3.681.231.699               | 30,55986446  | -4,26944767 |
| Q2 2007 | 360145198631  | 3.681.231.699               | 97,83279839  | 0,687631705 |
| Q3 2007 | 699467311078  | 3.681.231.699               | 190,0090427  | 0,48511504  |
| Q4 2007 | 983688444500  | 3.681.231.699               | 267,2172047  | 0,288934098 |
| Q1 2008 | 377027205654  | 3.681.231.699               | 102,4187654  | -1,60906489 |
| Q2 2008 | 770742945627  | 3.681.231.699               | 209,3709412  | 0,510826265 |
| Q3 2008 | 1231339377815 | 3.681.231.699               | 334,4911373  | 0,374061319 |
| Q4 2008 | 1745500936215 | 3.681.231.699               | 474,1622041  | 0,294563897 |
| Q1 2009 | 502718588719  | 3.681.231.699               | 136,5626045  | -2,47212332 |
| Q2 2009 | 1172471615548 | 3.681.231.699               | 318,4998151  | 0,571231762 |
| Q3 2009 | 1868404595804 | 3.681.231.699               | 507,5487632  | 0,372474453 |
| Q4 2009 | 2746654071082 | 3.681.231.699               | 746,1236607  | 0,319752489 |

Sumber data : diolah sendiri

| Tahun  | Laba Bersih | Jumlah Lembar Saham | EPS         |
|--------|-------------|---------------------|-------------|
| Q4 996 | 551.000.000 | 2.414.453.320       | 0,228209009 |

TABEL 4

| Quarter | EBIT           | TA                 | BEP (Y2)    |
|---------|----------------|--------------------|-------------|
| Q1 1997 | 132475053      | 6.238.876.245.362  | 0,00002123  |
| Q2 1997 | 150076349      | 6.333.478.810.818  | 0,00002370  |
| Q3 1997 | 154623756      | 6.667.299.183.425  | 0,00002319  |
| Q4 1997 | 160000000      | 6.679.122.794.406  | 0,00002396  |
| Q1 1998 | -180892365     | 7.535.498.728.612  | -0,00002401 |
| Q2 1998 | -252534109     | 7.676.132.500.754  | -0,00003290 |
| Q3 1998 | -358764732     | 8.213.124.564.045  | -0,00004368 |
| Q4 1998 | -382000000     | 9.640.675.994.272  | -0,00003962 |
| Q1 1999 | -147655434297  | 9.777.635.121.245  | -0,01510134 |
| Q2 1999 | 100028295523   | 9.548.852.488.376  | 0,01047543  |
| Q3 1999 | 261722844205   | 10.811.472.679.358 | 0,02420788  |
| Q4 1999 | 756785781541   | 9.851.099.111.969  | 0,07682247  |
| Q1 2000 | 242477539487   | 9.992.568.872.225  | 0,02426579  |
| Q2 2000 | 188954676901   | 10.864.733.520.976 | 0,01739156  |
| Q3 2000 | -588655661737  | 11.731.162.903.172 | -0,05017880 |
| Q4 2000 | 1253344350990  | 11.649.036.868.225 | 0,10759210  |
| Q1 2001 | -217287716634  | 11.966.654.925.530 | -0,01815777 |
| Q2 2001 | -1266266001247 | 12.326.110.910.057 | -0,10273038 |
| Q3 2001 | 147611645357   | 11.815.189.012.796 | 0,01249338  |
| Q4 2001 | -106049419052  | 11.930.019.357.471 | -0,00888929 |
| Q1 2002 | 522667831842   | 11.755.827.626.712 | 0,04446032  |
| Q2 2002 | 1255889650361  | 11.615.137.492.891 | 0,10812525  |
| Q3 2002 | 1353606359496  | 11.784.146.935.697 | 0,11486672  |
| Q4 2002 | 1441025860166  | 11.437.523.470.764 | 0,12599107  |
| Q1 2003 | 258034982577   | 10.963.841.818.772 | 0,02353509  |
| Q2 2003 | 853338165135   | 10.818.814.940.629 | 0,07887538  |
| Q3 2003 | 912845611234   | 10.837.957.520.334 | 0,08422672  |
| Q4 2003 | 983566621653   | 10.145.065.834.358 | 0,09695025  |
| Q1 2004 | 5672457972     | 10.103.077.035.644 | 0,00056146  |
| Q2 2004 | -150278407603  | 10.256.219.105.626 | -0,01465242 |
| Q3 2004 | 282493806909   | 10.298.074.295.995 | 0,02743171  |
| Q4 2004 | 184570048620   | 9.771.011.818.440  | 0,01888955  |
| Q1 2005 | 221101641472   | 9.858.705.506.115  | 0,02242705  |
| Q2 2005 | 452545072133   | 10.014.801.563.964 | 0,04518762  |
| Q3 2005 | 791300781421   | 10.355.696.178.632 | 0,07641213  |
| Q4 2005 | 1077811880570  | 10.536.379.743.924 | 0,10229433  |
| Q1 2006 | 241713281937   | 10.402.456.771.778 | 0,02323617  |
| Q2 2006 | 499562430434   | 10.255.560.406.525 | 0,04871137  |
| Q3 2006 | 808976520116   | 10.128.204.018.570 | 0,07987364  |
| Q4 2006 | 862197105510   | 9.598.280.330.742  | 0,08982829  |
| Q1 2007 | 164168375145   | 9.578.957.780.232  | 0,01713844  |
| Q2 2007 | 518536440102   | 9.784.647.116.970  | 0,05299490  |
| Q3 2007 | 1006437808563  | 10.247.615.810.071 | 0,09821190  |
| Q4 2007 | 1417691710317  | 10.016.027.529.358 | 0,14154231  |
| Q1 2008 | 538284750215   | 10.376.708.240.115 | 0,05187433  |
| Q2 2008 | 1101095983824  | 10.750.271.772.427 | 0,10242494  |
| Q3 2008 | 1757475987480  | 10.723.328.811.018 | 0,16389276  |
| Q4 2008 | 2332786918887  | 11.286.706.863.779 | 0,20668446  |
| Q1 2009 | 698546827847   | 11.243.495.584.969 | 0,06212897  |
| Q2 2009 | 1625258176156  | 11.262.927.047.411 | 0,14430158  |
| Q3 2009 | 2548423630579  | 11.799.011.738.759 | 0,21598619  |
| Q4 2009 | 3796326872422  | 13.276.270.232.548 | 0,28594830  |

Sumber data : diolah sendiri

TABEL 5

| Quarter | Current Assets    | Current Liabilities | Current Ratio | CR % (X1) |
|---------|-------------------|---------------------|---------------|-----------|
| Q1 1997 | 1.375.852.007.889 | 1.323.335.769.824   | 1,039684742   | 104%      |
| Q2 1997 | 1.399.785.733.500 | 1.400.834.224.876   | 0,999251524   | 100%      |
| Q3 1997 | 1.485.111.753.277 | 1.410.852.556.781   | 1,052634271   | 105%      |
| Q4 1997 | 1.496.186.379.339 | 1.531.438.486.596   | 0,976981049   | 98%       |
| Q1 1998 | 1.302.831.054.732 | 5.039.928.582.613   | 0,258501888   | 26%       |
| Q2 1998 | 1.300.663.298.100 | 7.001.926.648.811   | 0,185757915   | 19%       |
| Q3 1998 | 1.455.991.065.882 | 8.145.228.306.008   | 0,178753868   | 18%       |
| Q4 1998 | 1.315.227.046.704 | 8.570.904.264.110   | 0,153452542   | 15%       |
| Q1 1999 | 1.665.294.536.471 | 9.976.244.578.299   | 0,166925993   | 17%       |
| Q2 1999 | 1.777.823.988.645 | 9.012.736.610.021   | 0,197256845   | 20%       |
| Q3 1999 | 1.798.213.905.289 | 9.639.113.714.975   | 0,186553864   | 19%       |
| Q4 1999 | 1.944.130.743.228 | 8.361.207.475.635   | 0,232517941   | 23%       |
| Q1 2000 | 2.138.543.817.551 | 9.825.438.937.734   | 0,217653769   | 22%       |
| Q2 2000 | 2.247.775.987.190 | 9.950.024.387.655   | 0,225906581   | 23%       |
| Q3 2000 | 2.660.918.849.699 | 10.658.231.252.287  | 0,249658577   | 25%       |
| Q4 2000 | 1.291.630.136.263 | 376.409.901.830     | 3,431445693   | 343%      |
| Q1 2001 | 1.450.693.537.524 | 469.588.236.089     | 3,0892885     | 309%      |
| Q2 2001 | 1.533.318.215.336 | 480.816.968.793     | 3,188985237   | 319%      |
| Q3 2001 | 1.551.151.725.195 | 434.021.656.598     | 3,573903978   | 357%      |
| Q4 2001 | 1.527.989.099.460 | 720.332.680.791     | 2,121226956   | 212%      |
| Q1 2002 | 1.655.667.173.252 | 710.093.549.524     | 2,331618382   | 233%      |
| Q2 2002 | 1.692.403.284.191 | 693.907.115.877     | 2,438947873   | 244%      |
| Q3 2002 | 1.755.379.822.210 | 715.035.907.554     | 2,454953386   | 245%      |
| Q4 2002 | 1.777.418.504.621 | 611.956.213.073     | 2,90448641    | 290%      |
| Q1 2003 | 1.746.406.205.727 | 694.054.214.969     | 2,516238887   | 252%      |
| Q2 2003 | 1.745.288.508.522 | 666.745.488.048     | 2,617623276   | 262%      |
| Q3 2003 | 1.805.549.005.300 | 772.160.853.050     | 2,338306841   | 234%      |
| Q4 2003 | 1.467.098.787.110 | 784.952.881.405     | 1,869027838   | 187%      |
| Q1 2004 | 1.579.673.451.535 | 850.957.015.976     | 1,856349289   | 186%      |
| Q2 2004 | 1.797.454.606.157 | 1.028.129.995.038   | 1,748275622   | 175%      |
| Q3 2004 | 1.781.015.215.641 | 1.104.174.490.153   | 1,612983484   | 161%      |
| Q4 2004 | 1.594.719.751.504 | 1.126.678.136.613   | 1,415417323   | 142%      |
| Q1 2005 | 1.690.662.265.241 | 733.354.822.795     | 2,305380987   | 231%      |
| Q2 2005 | 1.901.664.573.943 | 783.019.686.877     | 2,428629325   | 243%      |
| Q3 2005 | 2.108.359.803.563 | 825.068.320.066     | 2,555376024   | 256%      |
| Q4 2005 | 2.155.764.743.807 | 855.844.362.864     | 2,518874736   | 252%      |
| Q1 2006 | 2.185.463.220.723 | 793.856.941.716     | 2,752968584   | 275%      |
| Q2 2006 | 2.387.188.690.155 | 1.212.111.798.239   | 1,969445965   | 197%      |
| Q3 2006 | 2.318.907.641.902 | 952.161.688.713     | 2,435413722   | 244%      |
| Q4 2006 | 1.741.702.404.144 | 812.180.007.701     | 2,144478302   | 214%      |
| Q1 2007 | 1.780.668.144.810 | 736.724.037.246     | 2,417008343   | 242%      |
| Q2 2007 | 2.007.932.381.137 | 864.307.901.224     | 2,323167911   | 232%      |
| Q3 2007 | 2.468.304.263.477 | 965.953.119.675     | 2,555304407   | 256%      |
| Q4 2007 | 2.248.589.496.820 | 759.612.975.138     | 2,960177841   | 296%      |
| Q1 2008 | 2.690.572.379.749 | 2.142.854.887.777   | 1,255601765   | 126%      |
| Q2 2008 | 3.095.346.067.017 | 2.280.536.442.456   | 1,357288579   | 136%      |
| Q3 2008 | 2.973.157.946.655 | 1.823.319.587.175   | 1,630629083   | 163%      |
| Q4 2008 | 3.471.276.001.333 | 1.943.884.694.003   | 1,785741722   | 179%      |
| Q1 2009 | 3.499.526.722.209 | 1.393.123.047.179   | 2,512001168   | 251%      |
| Q2 2009 | 3.611.223.331.771 | 1.328.130.670.741   | 2,719027134   | 272%      |
| Q3 2009 | 4.224.851.845.379 | 1.182.004.503.936   | 3,574311123   | 357%      |
| Q4 2009 | 5.322.916.291.443 | 1.771.030.703.811   | 3,005547154   | 301%      |

Sumber data : diolah sendiri

TABEL 6

| Quarter | Total Liabilities  | Total Assets       | Debt Ratio  | DR% (X2) |
|---------|--------------------|--------------------|-------------|----------|
| Q1 1997 | 5.900.183.554.376  | 6.238.876.245.362  | 0,945712549 | 95%      |
| Q2 1997 | 5.957.362.210.857  | 6.333.478.810.818  | 0,940614533 | 94%      |
| Q3 1997 | 6.252.199.754.637  | 6.667.299.183.425  | 0,937740993 | 94%      |
| Q4 1997 | 5.499.531.983.556  | 6.679.122.794.406  | 0,823391357 | 82%      |
| Q1 1998 | 6.252.976.823.565  | 7.535.498.728.612  | 0,829802651 | 83%      |
| Q2 1998 | 6.373.456.119.286  | 7.676.132.500.754  | 0,830295219 | 83%      |
| Q3 1998 | 7.316.753.038.264  | 8.213.124.564.045  | 0,890861082 | 89%      |
| Q4 1998 | 8.570.904.264.110  | 9.640.675.994.272  | 0,88903561  | 89%      |
| Q1 1999 | 8.456.742.337.412  | 9.777.635.121.245  | 0,864906722 | 86%      |
| Q2 1999 | 8.872.590.937.721  | 9.548.852.488.376  | 0,929178762 | 93%      |
| Q3 1999 | 9.639.113.714.975  | 10.811.472.679.358 | 0,891563435 | 89%      |
| Q4 1999 | 8.361.207.475.635  | 9.851.099.111.969  | 0,848758842 | 85%      |
| Q1 2000 | 9.742.447.338.691  | 9.992.568.872.225  | 0,974969246 | 97%      |
| Q2 2000 | 9.811.175.765.647  | 10.864.733.520.976 | 0,903029582 | 90%      |
| Q3 2000 | 10.665.957.652.287 | 11.731.162.903.172 | 0,909198665 | 91%      |
| Q4 2000 | 10.526.773.005.144 | 11.649.036.868.225 | 0,903660373 | 90%      |
| Q1 2001 | 11.013.034.887.592 | 11.966.654.925.530 | 0,920310225 | 92%      |
| Q2 2001 | 10.346.905.047.447 | 12.326.110.910.057 | 0,839429819 | 84%      |
| Q3 2001 | 8.862.905.049.824  | 11.815.189.012.796 | 0,75012808  | 75%      |
| Q4 2001 | 9.166.931.825.514  | 11.930.019.357.471 | 0,768392033 | 77%      |
| Q1 2002 | 8.505.687.448.598  | 11.755.827.626.712 | 0,723529446 | 72%      |
| Q2 2002 | 7.953.889.034.249  | 11.615.137.492.891 | 0,684786473 | 68%      |
| Q3 2002 | 8.060.566.928.911  | 11.784.146.935.697 | 0,684017857 | 68%      |
| Q4 2002 | 7.629.128.846.878  | 11.437.523.470.764 | 0,66702629  | 67%      |
| Q1 2003 | 6.903.454.522.147  | 10.963.841.818.772 | 0,629656523 | 63%      |
| Q2 2003 | 6.324.364.169.037  | 10.818.814.940.629 | 0,58457088  | 58%      |
| Q3 2003 | 6.262.424.307.912  | 10.837.957.520.334 | 0,577823293 | 58%      |
| Q4 2003 | 5.611.608.038.219  | 10.145.065.834.358 | 0,55313668  | 55%      |
| Q1 2004 | 5.573.008.990.735  | 10.103.077.035.644 | 0,551615015 | 55%      |
| Q2 2004 | 5.841.115.490.074  | 10.256.219.105.626 | 0,569519375 | 57%      |
| Q3 2004 | 5.582.091.611.764  | 10.298.074.295.995 | 0,542051985 | 54%      |
| Q4 2004 | 5.115.218.608.340  | 9.771.011.818.440  | 0,523509612 | 52%      |
| Q1 2005 | 5.049.355.435.973  | 9.858.705.506.115  | 0,512172256 | 51%      |
| Q2 2005 | 5.049.972.441.402  | 10.014.801.563.964 | 0,504250874 | 50%      |
| Q3 2005 | 5.159.607.352.160  | 10.355.696.178.632 | 0,498238579 | 50%      |
| Q4 2005 | 4.906.997.815.129  | 10.355.696.178.632 | 0,473845286 | 47%      |
| Q1 2006 | 4.609.901.191.621  | 10.355.696.178.632 | 0,445156087 | 45%      |
| Q2 2006 | 4.471.521.403.757  | 10.355.696.178.632 | 0,431793414 | 43%      |
| Q3 2006 | 4.126.464.706.757  | 10.355.696.178.632 | 0,39847294  | 40%      |
| Q4 2006 | 3.565.517.996.272  | 10.355.696.178.632 | 0,344305002 | 34%      |
| Q1 2007 | 3.431.996.758.718  | 10.355.696.178.632 | 0,331411496 | 33%      |
| Q2 2007 | 3.496.560.032.224  | 10.355.696.178.632 | 0,337646062 | 34%      |
| Q3 2007 | 3.613.412.605.329  | 10.355.696.178.632 | 0,348929955 | 35%      |
| Q4 2007 | 3.068.564.292.796  | 10.355.696.178.632 | 0,296316562 | 30%      |
| Q1 2008 | 3.052.791.172.114  | 10.355.696.178.632 | 0,294793428 | 29%      |
| Q2 2008 | 3.179.741.009.611  | 10.355.696.178.632 | 0,307052366 | 31%      |
| Q3 2008 | 2.723.582.343.270  | 10.355.696.178.632 | 0,263003307 | 26%      |
| Q4 2008 | 2.764.976.374.613  | 10.355.696.178.632 | 0,267000531 | 27%      |
| Q1 2009 | 2.216.875.614.858  | 10.355.696.178.632 | 0,214073064 | 21%      |
| Q2 2009 | 2.123.044.333.971  | 10.355.696.178.632 | 0,205012227 | 21%      |
| Q3 2009 | 1.965.030.135.372  | 10.355.696.178.632 | 0,189753552 | 19%      |
| Q4 2009 | 2.572.076.053.210  | 10.355.696.178.632 | 0,24837307  | 25%      |

Sumber data : diolah sendiri

TABEL 7

| Quarter | Sales              | Total Assets       | TATO (X3)   |
|---------|--------------------|--------------------|-------------|
| Q1 1997 | 1.455.765.447.826  | 6.238.876.245.362  | 0,233337766 |
| Q2 1997 | 1.149.999.577.221  | 6.333.478.810.818  | 0,181574710 |
| Q3 1997 | 1.503.212.156.757  | 6.667.299.183.425  | 0,225460432 |
| Q4 1997 | 1.572.160.955.127  | 6.679.122.794.406  | 0,235384347 |
| Q1 1998 | 1.555.723.434.965  | 7.535.498.728.612  | 0,206452617 |
| Q2 1998 | 1.555.646.582.133  | 7.676.132.500.754  | 0,202660204 |
| Q3 1998 | 1.753.320.177.594  | 8.213.124.564.045  | 0,213477850 |
| Q4 1998 | 1.589.882.081.427  | 9.640.675.994.272  | 0,164913963 |
| Q1 1999 | 1.603.117.690.235  | 9.777.635.121.245  | 0,163957610 |
| Q2 1999 | 1.616.723.301.767  | 9.548.852.488.376  | 0,169310742 |
| Q3 1999 | 1.681.532.279.093  | 10.811.472.679.358 | 0,155532214 |
| Q4 1999 | 1.758.966.257.437  | 9.851.099.111.969  | 0,178555330 |
| Q1 2000 | 1.801.234.238.564  | 9.992.568.872.225  | 0,180257375 |
| Q2 2000 | 1.787.547.621.055  | 10.864.733.520.976 | 0,164527516 |
| Q3 2000 | 1.885.612.984.537  | 11.731.162.903.172 | 0,160735385 |
| Q4 2000 | 2.447.973.309.208  | 11.649.036.868.225 | 0,210143837 |
| Q1 2001 | 683.518.970.922    | 11.966.654.925.530 | 0,057118633 |
| Q2 2001 | 1.580.715.750.515  | 12.326.110.910.057 | 0,128241240 |
| Q3 2001 | 2.571.786.905.346  | 11.815.189.012.796 | 0,217667860 |
| Q4 2001 | 3.453.411.340.960  | 11.930.019.357.471 | 0,289472400 |
| Q1 2002 | 836.457.748.833    | 11.755.827.626.712 | 0,071152604 |
| Q2 2002 | 1.820.876.416.466  | 11.615.137.492.891 | 0,156767530 |
| Q3 2002 | 3.009.330.398.502  | 11.784.146.935.697 | 0,255371086 |
| Q4 2002 | 3.948.282.505.933  | 11.437.523.470.764 | 0,345204319 |
| Q1 2003 | 941.379.663.028    | 10.963.841.818.772 | 0,085862208 |
| Q2 2003 | 1.966.361.045.885  | 10.818.814.940.629 | 0,181753829 |
| Q3 2003 | 3.166.686.806.237  | 10.837.957.520.334 | 0,292184833 |
| Q4 2003 | 4.157.683.466.642  | 10.145.065.834.358 | 0,409823212 |
| Q1 2004 | 954.155.422.891    | 10.103.077.035.644 | 0,094442062 |
| Q2 2004 | 2.032.748.411.949  | 10.256.219.105.626 | 0,198196664 |
| Q3 2004 | 3.397.861.100.767  | 10.298.074.295.995 | 0,329951115 |
| Q4 2004 | 4.615.507.373.678  | 9.771.011.818.440  | 0,472367392 |
| Q1 2005 | 120.233.548.699    | 9.858.705.506.115  | 0,012195673 |
| Q2 2005 | 2.537.157.793.430  | 10.014.801.563.964 | 0,253340795 |
| Q3 2005 | 4.165.555.398.435  | 10.355.696.178.632 | 0,402247741 |
| Q4 2005 | 5.592.353.968.132  | 10.536.379.743.924 | 0,530766174 |
| Q1 2006 | 1.429.937.334.858  | 10.402.456.771.778 | 0,137461502 |
| Q2 2006 | 3.063.385.784.699  | 10.255.560.406.525 | 0,298704865 |
| Q3 2006 | 4.819.555.297.631  | 10.128.204.018.570 | 0,475854879 |
| Q4 2006 | 6.325.329.027.717  | 9.598.280.330.742  | 0,659006490 |
| Q1 2007 | 1.480.598.532.258  | 9.578.957.780.232  | 0,154567811 |
| Q2 2007 | 3.157.153.412.642  | 9.784.647.116.970  | 0,322664004 |
| Q3 2007 | 5.306.267.415.743  | 10.247.615.810.071 | 0,517805069 |
| Q4 2007 | 2.753.645.286.214  | 10.016.027.529.358 | 0,274923894 |
| Q1 2008 | 2.052.487.954.329  | 10.376.708.240.115 | 0,197797597 |
| Q2 2008 | 4.489.191.076.712  | 10.750.271.772.427 | 0,417588613 |
| Q3 2008 | 7.249.214.707.724  | 10.723.328.811.018 | 0,676022794 |
| Q4 2008 | 9.780.498.326.080  | 11.286.706.863.779 | 0,866550221 |
| Q1 2009 | 2.186.633.212.803  | 11.243.495.584.969 | 0,194479839 |
| Q2 2009 | 4.795.496.983.084  | 11.262.927.047.411 | 0,425777150 |
| Q3 2009 | 7.424.392.957.500  | 11.799.011.738.759 | 0,629238543 |
| Q4 2009 | 10.576.456.344.583 | 13.276.270.232.548 | 0,796643648 |

Sumber data : diolah sendiri

**TABEL 8**

| <b>Quarter</b> | <b>AQUISITION (X4)</b> |
|----------------|------------------------|
| Q1 1997        | 0                      |
| Q2 1997        | 0                      |
| Q3 1997        | 0                      |
| Q4 1997        | 0                      |
| Q1 1998        | 0                      |
| Q2 1998        | 0                      |
| Q3 1998        | 0                      |
| Q4 1998        | 0                      |
| Q1 1999        | 0                      |
| Q2 1999        | 0                      |
| Q3 1999        | 0                      |
| Q4 1999        | 0                      |
| Q1 2000        | 0                      |
| Q2 2000        | 0                      |
| Q3 2000        | 0                      |
| Q4 2000        | 0                      |
| Q1 2001        | 1                      |
| Q2 2001        | 1                      |
| Q3 2001        | 1                      |
| Q4 2001        | 1                      |
| Q1 2002        | 1                      |
| Q2 2002        | 1                      |
| Q3 2002        | 1                      |
| Q4 2002        | 1                      |
| Q1 2003        | 1                      |
| Q2 2003        | 1                      |
| Q3 2003        | 1                      |
| Q4 2003        | 1                      |
| Q1 2004        | 1                      |
| Q2 2004        | 1                      |
| Q3 2004        | 1                      |
| Q4 2004        | 1                      |
| Q1 2005        | 1                      |
| Q2 2005        | 1                      |
| Q3 2005        | 1                      |
| Q4 2005        | 1                      |
| Q1 2006        | 1                      |
| Q2 2006        | 1                      |
| Q3 2006        | 1                      |
| Q4 2006        | 1                      |
| Q1 2007        | 1                      |
| Q2 2007        | 1                      |
| Q3 2007        | 1                      |
| Q4 2007        | 1                      |
| Q1 2008        | 1                      |
| Q2 2008        | 1                      |
| Q3 2008        | 1                      |
| Q4 2008        | 1                      |
| Q1 2009        | 1                      |
| Q2 2009        | 1                      |
| Q3 2009        | 1                      |
| Q4 2009        | 1                      |

Sumber data : diolah sendiri



TABEL 9

| Quarter | Sales              | Δ Sales      | Growth sales % |
|---------|--------------------|--------------|----------------|
| Q1 1997 | 1.475.765.447.826  | 0,01813665   | 2%             |
| Q2 1997 | 1.149.999.577.221  | -0,28327477  | -28%           |
| Q3 1997 | 1.503.212.156.757  | 0,23497188   | 23%            |
| Q4 1997 | 1.572.160.955.127  | 0,04385607   | 4%             |
| Q1 1998 | 1.555.723.434.965  | -0,01056584  | -1%            |
| Q2 1998 | 1.555.646.582.133  | -0,00004940  | 0%             |
| Q3 1998 | 1.753.320.177.594  | 0,11274244   | 11%            |
| Q4 1998 | 1.589.882.081.427  | -0,10279888  | -10%           |
| Q1 1999 | 1.603.117.690.235  | 0,00825617   | 1%             |
| Q2 1999 | 1.616.723.301.767  | 0,00841555   | 1%             |
| Q3 1999 | 1.681.532.279.093  | 0,03854162   | 4%             |
| Q4 1999 | 1.758.966.257.437  | 0,04402244   | 4%             |
| Q1 2000 | 1.801.234.238.564  | 0,02346612   | 2%             |
| Q2 2000 | 1.787.547.621.055  | -0,00765664  | -1%            |
| Q3 2000 | 1.885.612.984.537  | 0,05200715   | 5%             |
| Q4 2000 | 2.447.973.309.208  | 0,22972486   | 23%            |
| Q1 2001 | 683.518.970.922    | -2,58142702  | -258%          |
| Q2 2001 | 1.580.715.750.515  | 0,56758894   | 57%            |
| Q3 2001 | 2.571.786.905.346  | 0,38536286   | 39%            |
| Q4 2001 | 3.453.411.340.960  | 0,25529088   | 26%            |
| Q1 2002 | 836.457.748.833    | -3,12861420  | -313%          |
| Q2 2002 | 1.820.876.416.466  | 0,54062904   | 54%            |
| Q3 2002 | 3.009.330.398.502  | 0,39492306   | 39%            |
| Q4 2002 | 3.948.282.505.933  | 0,23781280   | 24%            |
| Q1 2003 | 941.379.663.028    | -3,19414468  | -319%          |
| Q2 2003 | 1.966.361.045.885  | 0,52125798   | 52%            |
| Q3 2003 | 3.166.686.806.237  | 0,37904783   | 38%            |
| Q4 2003 | 4.157.683.466.642  | 0,23835308   | 24%            |
| Q1 2004 | 954.155.422.891    | -3,35744887  | -336%          |
| Q2 2004 | 2.032.748.411.949  | 0,53060821   | 53%            |
| Q3 2004 | 3.397.861.100.767  | 0,40175647   | 40%            |
| Q4 2004 | 4.615.507.373.678  | 0,26381634   | 26%            |
| Q1 2005 | 120.233.548.699    | -37,38784951 | -3739%         |
| Q2 2005 | 2.537.157.793.430  | 0,95261093   | 95%            |
| Q3 2005 | 4.165.555.398.435  | 0,39091969   | 39%            |
| Q4 2005 | 5.592.353.968.132  | 0,25513381   | 26%            |
| Q1 2006 | 1.429.937.334.858  | -2,91090842  | -291%          |
| Q2 2006 | 3.063.385.784.699  | 0,53321670   | 53%            |
| Q3 2006 | 4.819.555.297.631  | 0,36438414   | 36%            |
| Q4 2006 | 6.325.329.027.717  | 0,23805461   | 24%            |
| Q1 2007 | 1.480.598.532.258  | -3,27214325  | -327%          |
| Q2 2007 | 3.157.153.412.642  | 0,53103371   | 53%            |
| Q3 2007 | 5.306.267.415.743  | 0,40501427   | 41%            |
| Q4 2007 | 2.753.645.286.214  | -0,92699744  | -93%           |
| Q1 2008 | 2.052.487.954.329  | -0,34161337  | -34%           |
| Q2 2008 | 4.489.191.076.712  | 0,54279336   | 54%            |
| Q3 2008 | 7.249.214.707.724  | 0,38073415   | 38%            |
| Q4 2008 | 9.780.498.326.080  | 0,25880927   | 26%            |
| Q1 2009 | 2.186.633.212.803  | -3,47285730  | -347%          |
| Q2 2009 | 4.795.496.983.084  | 0,54402365   | 54%            |
| Q3 2009 | 7.424.392.957.500  | 0,35408901   | 35%            |
| Q4 2009 | 10.576.456.344.583 | 0,29802642   | 30%            |

Sumber data : diolah sendiri

Year      Sales  
Q4 1996      1.449.000.000.000

**TABEL 9**

| Quarter | Sales | $\Delta$ Sales | Growth sales % |
|---------|-------|----------------|----------------|
|---------|-------|----------------|----------------|