

Lampiran 1

Data Harga Saham pada Perusahaan yang bergerak di Industri Kelapa Sawit yang terdaftar di Bursa Efek Indonesia tahun 2007 sampai dengan 2011

Company	Year	Date	Stock Price	Stock Price +1	PriceLN
			(Rp./Lembar)	(Rp./Lembar)	
AALI	2007	30-Jun	13,750	28,000	10.24
		31-Dec	28,000	29,550	10.29
	2008	30-Jun	29,550	9,800	9.19
		31-Dec	9,800	16,850	9.73
	2009	30-Jun	16,850	22,750	10.03
		31-Dec	22,750	19,350	9.87
	2010	30-Jun	19,350	26,200	10.17
		31-Dec	26,200	23,500	10.06
2011	30-Jun	23,500	21,700	9.99	
	31-Dec	21,700	20,050	9.91	
UNSP	2007	30-Jun	1,520	2,275	7.73
		31-Dec	2,275	1,880	7.54
	2008	30-Jun	1,880	260	5.56
		31-Dec	260	690	6.54
	2009	30-Jun	690	580	6.36
		31-Dec	580	370	5.91
	2010	30-Jun	370	390	5.97
		31-Dec	390	420	6.04
2011	30-Jun	420	285	5.65	
	31-Dec	285	182	5.20	
SGRO	2007	30-Jun	2,375	3,450	8.15
		31-Dec	3,450	3,825	8.25
	2008	30-Jun	3,825	1,190	7.08
		31-Dec	1,190	1,640	7.40
	2009	30-Jun	1,640	2,700	7.90
		31-Dec	2,700	2,275	7.73
	2010	30-Jun	2,275	3,175	8.06
		31-Dec	3,175	3,450	8.15
2011	30-Jun	3,450	2,900	7.97	
	31-Dec	2,975	2,975	8.00	
TBLA	2007	30-Jun	570	630	6.45
		31-Dec	630	710	6.57
	2008	30-Jun	710	190	5.25
		31-Dec	190	305	5.72
	2009	30-Jun	305	340	5.83
		31-Dec	340	360	5.89
	2010	30-Jun	360	410	6.02
		31-Dec	410	580	6.36
2011	30-Jun	580	590	6.38	
	31-Dec	590	520	6.25	

Lampiran 2

Data Current Ratio pada Perusahaan yang bergerak di Industri Kelapa Sawit yang terdaftar di Bursa Efek Indonesia tahun 2007 sampai dengan 2011

Company	Year	Date	Current Asset	Current Liabilities	Current Ratio	Current Ratio
			(Dalam Jutaan Rupiah)	(Dalam Jutaan Rupiah)	(CA/CL)	(%)
AALI	2007	30-Jun	816,618.00	800,455.00	1.02	102%
		31-Dec	1,647,854.00	1,027,958.00	1.60	160%
	2008	30-Jun	2,399,418.00	1,566,463.00	1.53	153%
		31-Dec	1,975,656.00	1,016,167.00	1.94	194%
	2009	30-Jun	2,381,613.00	1,488,417.00	1.60	160%
		31-Dec	1,714,426.00	938,976.00	1.83	183%
	2010	30-Jun	1,291,353.00	1,233,524.00	1.05	105%
		31-Dec	2,051,177.00	1,061,852.00	1.93	193%
	2011	30-Jun	2,388,354.00	1,669,940.00	1.43	143%
		31-Dec	1,886,387.00	1,440,351.00	1.31	131%
UNSP	2007	30-Jun	984,817.32	240,408.94	4.10	410%
		31-Dec	1,427,343.47	449,843.84	3.17	317%
	2008	30-Jun	1,334,698.35	585,066.84	2.28	228%
		31-Dec	732,998.57	473,418.16	1.55	155%
	2009	30-Jun	769,968.64	823,705.14	0.93	93%
		31-Dec	666,219.89	659,502.24	1.01	101%
	2010	30-Jun	2,408,911.00	2,171,831.32	1.11	111%
		31-Dec	1,788,214.17	3,342,539.72	0.53	53%
	2011	30-Jun	1,918,641.06	3,558,021.83	0.54	54%
		31-Dec	1,369,517.75	3,443,758.82	0.40	40%
SGRO	2007	30-Jun	1,488,718.16	214,144.74	6.95	695%
		31-Dec	942,310.11	374,461.79	2.52	252%
	2008	30-Jun	928,219.74	353,653.51	2.62	262%
		31-Dec	803,628.70	354,044.21	2.27	227%
	2009	30-Jun	828,411.94	474,380.05	1.75	175%
		31-Dec	615,541.74	235,648.48	2.61	261%
	2010	30-Jun	632,407.43	401,246.30	1.58	158%
		31-Dec	868,210.44	461,268.76	1.88	188%
	2011	30-Jun	1,117,535.17	659,788.85	1.69	169%
		31-Dec	782,629.55	492,375.21	1.59	159%
TBLA	2007	30-Jun	563,298.15	394,954.51	1.43	143%
		31-Dec	981,727.59	542,010.93	1.81	181%
	2008	30-Jun	1,292,476.39	943,519.67	1.37	137%
		31-Dec	1,119,783.31	1,014,802.23	1.10	110%
	2009	30-Jun	1,045,956.29	931,249.73	1.12	112%
		31-Dec	985,162.98	973,633.47	1.01	101%
	2010	30-Jun	1,075,539.52	974,616.33	1.10	110%
		31-Dec	1,631,469.76	1,468,443.37	1.11	111%
	2011	30-Jun	1,687,433.33	1,522,546.14	1.11	111%
		31-Dec	1,883,106.00	1,366,205.00	1.38	138%

Lampiran 3

Data Net Profit Margin Perusahaan yang bergerak di Industri Kelapa Sawit yang terdaftar di Bursa Efek Indonesia tahun 2007 sampai dengan 2011

Company	Year	Date	Net Income	Sales	Net Profit Margin	Net Profit Margin
			(Dalam Jutaan Rupiah)	(Dalam Jutaan Rupiah)	(NI/S)	(%)
AALI	2007	30-Jun	682,525.00	2,392,983.00	0.29	29%
		31-Dec	1,973,428.00	5,960,954.00	0.33	33%
	2008	30-Jun	1,597,466.00	4,644,759.00	0.34	34%
		31-Dec	2,631,019.00	8,161,217.00	0.32	32%
	2009	30-Jun	769,849.00	3,537,853.00	0.22	22%
		31-Dec	1,660,649.00	7,424,283.00	0.22	22%
	2010	30-Jun	662,018.00	3,517,795.00	0.19	19%
		31-Dec	2,016,780.00	8,843,721.00	0.23	23%
	2011	30-Jun	1,317,291.00	5,296,582.00	0.25	25%
		31-Dec	2,498,565.00	10,772,582.00	0.23	23%
UNSP	2007	30-Jun	75,024.32	638,028.65	0.12	12%
		31-Dec	206,575.27	1,949,017.78	0.11	11%
	2008	30-Jun	326,446.67	1,580,401.41	0.21	21%
		31-Dec	173,569.36	2,931,418.72	0.06	6%
	2009	30-Jun	135,188.62	1,041,832.14	0.13	13%
		31-Dec	252,783.33	2,325,282.03	0.11	11%
	2010	30-Jun	47,262.02	1,134,299.69	0.04	4%
		31-Dec	808,694.19	2,939,628.46	0.28	28%
	2011	30-Jun	408,101.02	2,303,694.09	0.18	18%
		31-Dec	745,500.65	4,367,080.85	0.17	17%
SGRO	2007	30-Jun	39,592.70	541,057.35	0.07	7%
		31-Dec	215,082.99	1,598,930.91	0.13	13%
	2008	30-Jun	336,041.88	1,498,314.28	0.22	22%
		31-Dec	439,516.26	2,288,143.12	0.19	19%
	2009	30-Jun	95,038.56	559,910.99	0.17	17%
		31-Dec	281,766.21	1,815,557.17	0.16	16%
	2010	30-Jun	132,653.68	745,652.33	0.18	18%
		31-Dec	457,319.20	2,311,748.79	0.20	20%
	2011	30-Jun	361,657.33	1,711,331.58	0.21	21%
		31-Dec	549,522.61	3,142,378.85	0.17	17%
TBLA	2007	30-Jun	25,846.76	827,191.10	0.03	3%
		31-Dec	97,227.23	1,844,206.99	0.05	5%
	2008	30-Jun	241,377.10	2,498,443.81	0.10	10%
		31-Dec	63,336.77	3,955,846.30	0.02	2%
	2009	30-Jun	109,480.02	1,431,523.56	0.08	8%
		31-Dec	251,712.00	2,783,572.76	0.09	9%
	2010	30-Jun	86,481.76	1,208,855.49	0.07	7%
		31-Dec	248,136.00	2,951,113.86	0.08	8%
	2011	30-Jun	311,991.14	2,077,793.76	0.15	15%
		31-Dec	421,127.00	3,731,749.00	0.11	11%

Lampiran 4

Data Total Aset Turn Over Perusahaan yang bergerak di Industri Kelapa Sawit yang terdaftar di Bursa Efek Indonesia tahun 2007 sampai dengan 2011

Company	Year	Date	Sales	Total Asset	Total Asset Turn Over	TATO
			(Dalam Jutaan Rupiah)	(Dalam Jutaan Rupiah)	(Sales/Total Asset)	(%)
AALI	2007	30-Jun	2,392,983.00	4,076,641.00	0.59	59%
		31-Dec	5,960,954.00	5,352,986.00	1.11	111%
	2008	30-Jun	4,644,759.00	6,499,015.00	0.71	71%
		31-Dec	8,161,217.00	6,519,791.00	1.25	125%
	2009	30-Jun	3,537,853.00	7,528,364.00	0.47	47%
		31-Dec	7,424,283.00	7,571,399.00	0.98	98%
	2010	30-Jun	3,517,795.00	7,772,875.00	0.45	45%
		31-Dec	8,843,721.00	8,791,799.00	1.01	101%
2011	30-Jun	5,296,582.00	9,692,978.00	0.55	55%	
	31-Dec	10,772,582.00	10,204,495.00	1.06	106%	
UNSP	2007	30-Jun	638,028.65	2,324,281.67	0.27	27%
		31-Dec	1,949,017.78	4,310,903.58	0.45	45%
	2008	30-Jun	1,580,401.41	4,670,551.48	0.34	34%
		31-Dec	2,931,418.72	4,700,318.84	0.62	62%
	2009	30-Jun	1,041,832.14	5,006,377.49	0.21	21%
		31-Dec	2,325,282.03	5,071,797.31	0.46	46%
	2010	30-Jun	1,134,299.69	15,531,096.19	0.07	7%
		31-Dec	2,939,628.46	18,498,498.37	0.16	16%
2011	30-Jun	2,303,694.09	18,761,241.92	0.12	12%	
	31-Dec	4,367,080.85	18,702,295.20	0.23	23%	
SGRO	2007	30-Jun	541,057.35	2,590,381.21	0.21	21%
		31-Dec	1,598,930.91	2,088,001.65	0.77	77%
	2008	30-Jun	1,498,314.28	2,125,401.71	0.70	70%
		31-Dec	2,288,143.12	2,156,164.01	1.06	106%
	2009	30-Jun	559,910.99	2,278,794.56	0.25	25%
		31-Dec	1,815,557.17	2,261,798.24	0.80	80%
	2010	30-Jun	745,652.33	2,492,399.74	0.30	30%
		31-Dec	2,311,748.79	2,875,847.11	0.80	80%
2011	30-Jun	1,711,331.58	3,291,074.14	0.52	52%	
	31-Dec	3,142,378.85	3,411,026.25	0.92	92%	
TBLA	2007	30-Jun	827,191.10	2,014,336.78	0.41	41%
		31-Dec	1,844,206.99	2,457,120.12	0.75	75%
	2008	30-Jun	2,498,443.81	2,880,647.34	0.87	87%
		31-Dec	3,955,846.30	2,802,497.07	1.41	141%
	2009	30-Jun	1,431,523.56	2,773,885.31	0.52	52%
		31-Dec	2,783,572.76	2,786,340.21	1.00	100%
	2010	30-Jun	1,208,855.49	2,939,930.91	0.41	41%
		31-Dec	2,951,113.86	3,651,105.17	0.81	81%
2011	30-Jun	2,077,793.76	3,821,742.79	0.54	54%	
	31-Dec	3,731,749.00	4,244,618.00	0.88	88%	

Lampiran 5

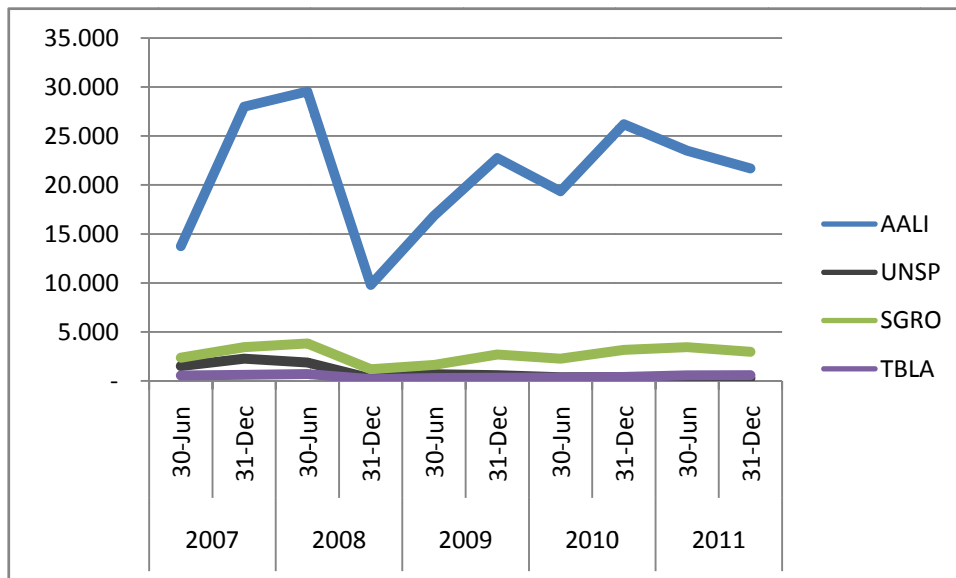
Data Equity Multiplier Perusahaan yang bergerak di Industri Kelapa Sawit yang terdaftar di Bursa Efek Indonesia tahun 2007 sampai dengan 2011

Company	Year	Date	Total Asset	Total Equity	Equity Multiplier	Equity Multiplier
			(Dalam Jutaan Rupiah)	(Dalam Jutaan Rupiah)	(TA/TE)	(%)
AALI	2007	30-Jun	4,076,641.00	3,068,901.00	1.33	133%
		31-Dec	5,352,986.00	4,060,602.00	1.32	132%
	2008	30-Jun	6,499,015.00	4,673,852.00	1.39	139%
		31-Dec	6,519,791.00	5,156,245.00	1.26	126%
	2009	30-Jun	7,528,364.00	5,682,009.00	1.32	132%
		31-Dec	7,571,399.00	6,226,365.00	1.22	122%
	2010	30-Jun	7,772,875.00	6,130,559.00	1.27	127%
		31-Dec	8,791,799.00	7,457,257.00	1.18	118%
	2011	30-Jun	9,692,978.00	7,717,307.00	1.26	126%
		31-Dec	10,204,495.00	8,426,158.00	1.21	121%
UNSP	2007	30-Jun	2,324,281.67	682,517.70	3.41	341%
		31-Dec	4,310,903.58	2,385,205.98	1.81	181%
	2008	30-Jun	4,670,551.48	2,625,054.07	1.78	178%
		31-Dec	4,700,318.84	2,470,178.28	1.90	190%
	2009	30-Jun	5,006,377.49	2,553,838.26	1.96	196%
		31-Dec	5,071,797.31	2,670,741.29	1.90	190%
	2010	30-Jun	15,531,096.19	7,590,712.96	2.05	205%
		31-Dec	18,498,498.37	8,543,498.72	2.17	217%
	2011	30-Jun	18,761,241.92	8,626,416.48	2.17	217%
		31-Dec	18,702,295.20	9,057,562.56	2.06	206%
SGRO	2007	30-Jun	2,590,381.21	1,296,626.87	2.00	200%
		31-Dec	2,088,001.65	1,471,239.65	1.42	142%
	2008	30-Jun	2,125,401.71	1,524,786.34	1.39	139%
		31-Dec	2,156,164.01	1,552,963.65	1.39	139%
	2009	30-Jun	2,278,794.56	1,569,751.95	1.45	145%
		31-Dec	2,261,798.24	1,765,580.59	1.28	128%
	2010	30-Jun	2,492,399.74	1,811,511.78	1.38	138%
		31-Dec	2,875,847.11	2,159,265.59	1.33	133%
	2011	30-Jun	3,291,074.14	2,316,802.92	1.42	142%
		31-Dec	3,411,026.25	2,499,510.73	1.36	136%
TBLA	2007	30-Jun	2,014,336.78	893,401.83	2.25	225%
		31-Dec	2,457,120.12	934,959.64	2.63	263%
	2008	30-Jun	2,880,647.34	1,177,115.61	2.45	245%
		31-Dec	2,802,497.07	888,772.54	3.15	315%
	2009	30-Jun	2,773,885.31	997,600.16	2.78	278%
		31-Dec	2,786,340.21	899,647.60	3.10	310%
	2010	30-Jun	2,939,930.91	1,087,740.35	2.70	270%
		31-Dec	3,651,105.17	1,241,592.72	2.94	294%
	2011	30-Jun	3,821,742.79	1,528,054.34	2.50	250%
		31-Dec	4,244,618.00	1,607,315.00	2.64	264%

Lampiran 6

Tabel dan Grafik Perkembangan Harga Saham per Emiten

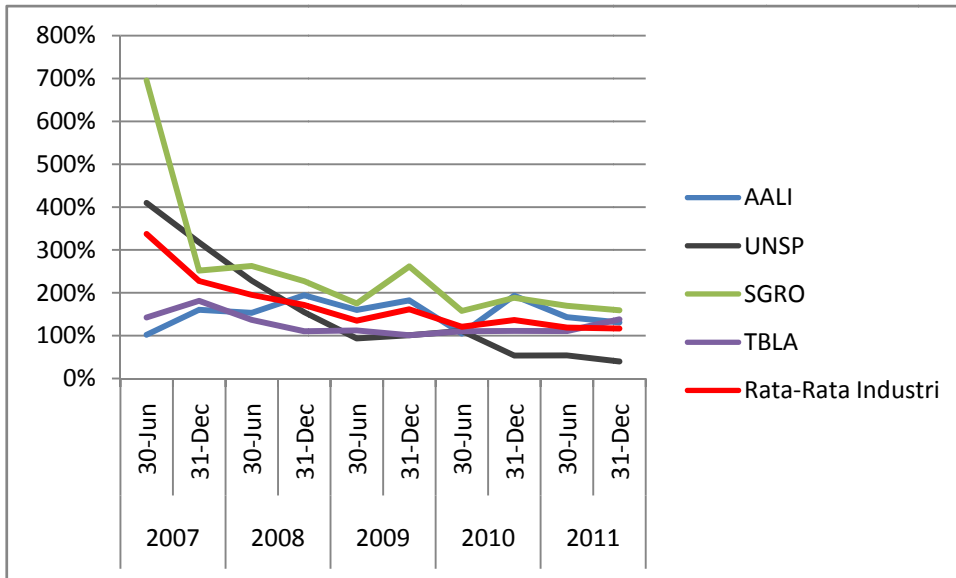
Year	Date	AAJI	UNSP	SGRO	TBLA
2007	30-Jun	13,750	1,520	2,375	570
	31-Dec	28,000	2,275	2,450	630
2008	30-Jun	29,550	1,880	3,825	710
	31-Dec	9,800	260	1,190	190
2009	30-Jun	16,850	690	1,640	305
	31-Dec	22,750	380	2,700	340
2010	30-Jun	19,350	370	2,275	360
	31-Dec	26,200	390	3,175	410
2011	30-Jun	23,500	420	3,450	580
	31-Dec	21,700	285	2,975	590



Lampiran 7

Tabel dan Grafik Perkembangan Current Ratio per Emiten

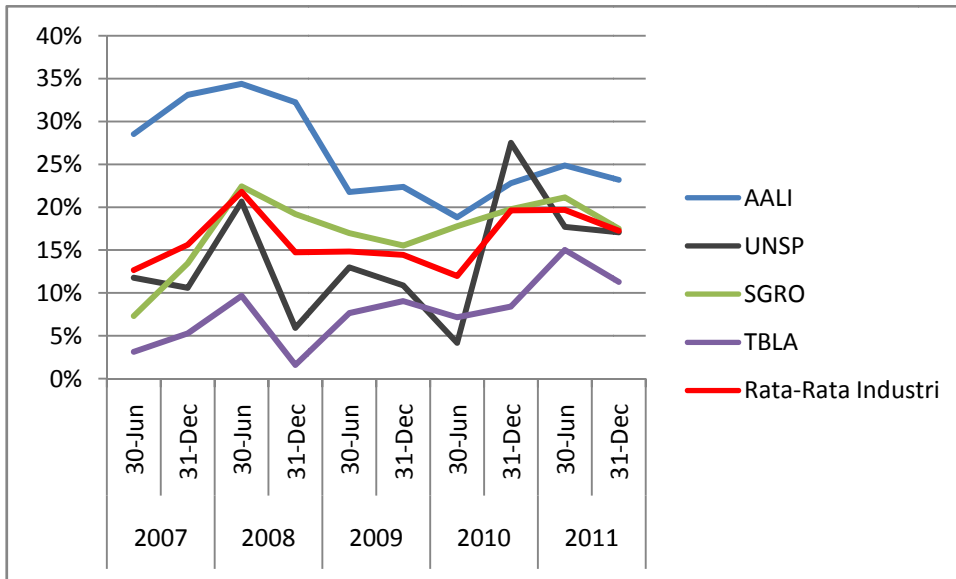
Year	Date	AAI	UNSP	SGRO	TBLA	Rata-Rata Industri
2007	30-Jun	202%	413%	693%	140%	337%
	31-Dec	203%	317%	323%	202%	228%
2008	30-Jun	218%	279%	363%	117%	195%
	31-Dec	250%	279%	317%	110%	172%
2009	30-Jun	203%	93%	179%	112%	135%
	31-Dec	203%	202%	202%	202%	161%
2010	30-Jun	203%	112%	279%	110%	121%
	31-Dec	250%	93%	202%	112%	136%
2011	30-Jun	140%	93%	202%	112%	119%
	31-Dec	172%	93%	279%	172%	117%
Rata-Rata Emiten		222%	239%	379%	179%	172%



Lampiran 8

Tabel dan Grafik Perkembangan Net Profit Margin per Emiten

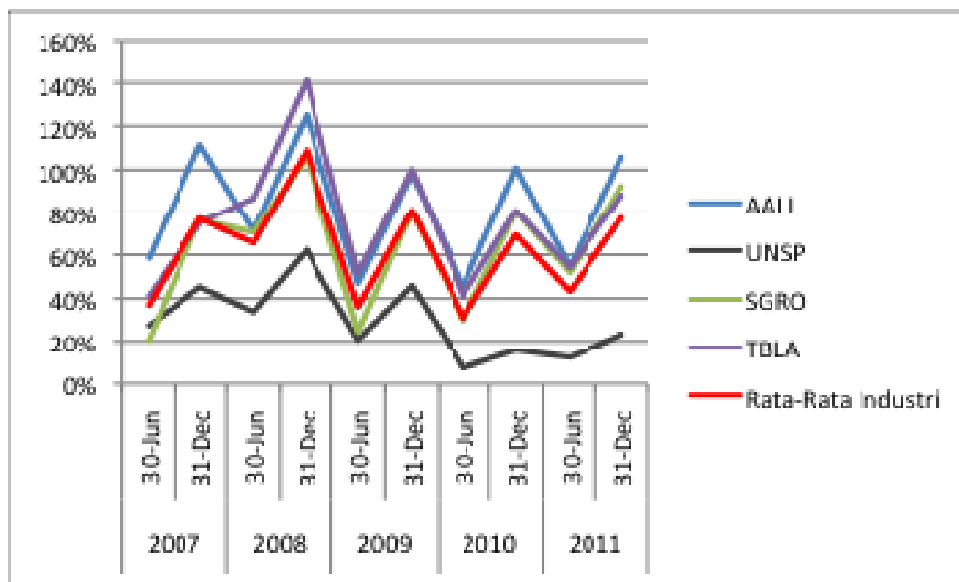
Year	Date	AAI	UNSP	SGRO	TBLA	Rata-Rata Industri
2007	30-Jun	28%	12%	7%	8%	13%
	31-Dec	33%	11%	11%	9%	16%
2008	30-Jun	34%	21%	22%	20%	22%
	31-Dec	32%	8%	20%	20%	15%
2009	30-Jun	22%	11%	17%	8%	15%
	31-Dec	22%	11%	16%	9%	14%
2010	30-Jun	20%	4%	20%	7%	12%
	31-Dec	22%	20%	20%	8%	20%
2011	30-Jun	22%	20%	21%	22%	20%
	31-Dec	22%	17%	17%	11%	17%
Rata-Rata Emiten		26%	14%	17%	9%	16%



Lampiran 9

Tabel dan Grafik Perkembangan Total Asset Turn Over per Emiten

Year	Date	AAII	UNSP	SGRO	TBLA	Rata-Rata Industri
2007	30-Jun	96%	27%	21%	41%	37%
	31-Dec	112%	42%	77%	73%	77%
2008	30-Jun	71%	34%	70%	67%	66%
	31-Dec	129%	62%	100%	142%	109%
2009	30-Jun	47%	21%	23%	12%	36%
	31-Dec	92%	40%	90%	200%	81%
2010	30-Jun	43%	7%	30%	41%	31%
	31-Dec	102%	16%	90%	91%	69%
2011	30-Jun	93%	12%	12%	94%	43%
	31-Dec	100%	21%	92%	99%	77%
Rata-Rata Emiten		62%	29%	61%	70%	63%



Lampiran 10

Tabel dan Grafik Perkembangan Equity Multiplier per Emiten

Year	Date	AAI	UNSP	SGRO	TBLA	Rata-Rata Industr
2007	30-Jun	118%	342%	200%	270%	225%
	31-Dec	112%	282%	142%	260%	179%
2008	30-Jun	119%	179%	119%	249%	175%
	31-Dec	120%	290%	119%	319%	193%
2009	30-Jun	112%	290%	149%	270%	205%
	31-Dec	112%	290%	129%	310%	207%
2010	30-Jun	117%	209%	119%	270%	200%
	31-Dec	110%	217%	110%	290%	200%
2011	30-Jun	120%	217%	142%	270%	201%
	31-Dec	112%	200%	110%	260%	202%
Rata-Rata Emiten		119%	212%	140%	272%	200%

