

Lampiran 1. Pempulan Data

NO	Pendaftaran				Poli Umum (PU)		Poli KIA (PK)		Poli Gigi (PG)		Laboratorium (L)		Farmasi dan Kasir	
	Waktu Antar Kedatangan	WAK^2	Waktu Pelayanan Sistem	WP^2	Waktu Pelayanan Sistem	WPPU^2	Waktu Pelayanan Sistem	WPPK^2	Waktu Pelayanan Sistem	WPPG^2	Waktu Pelayanan Sistem	WPL^2	Waktu Pelayanan Sistem	WPFK^2
1	1,81	3,2761	2,08	4,3264	6,68	44,6224							4,42	19,5364
2	4,46	19,8916	2,41	5,8081	7,65	58,5225							3,05	9,3025
3	1,26	1,5876	2,78	7,7284	5,58	31,1364							2,05	4,2025
4	3,85	14,8225	2,38	5,6644	4,75	22,5625							4,35	18,9225
5	2,65	7,0225	1,31	1,7161			5,05	25,5025					1,41	1,9881
6	3,02	9,1204	2,71	7,3441	4,31	18,5761			5,41	29,2681			4,23	17,8929
7	5,03	25,3009	2,43	5,9049									4,28	18,3184
8	3,88	15,0544	2,91	8,4681	4,63	21,4369							4,32	18,6624
9	5,43	29,4849	2,88	8,2944	6,21	38,5641							3,33	11,0889
10	1,21	1,4641	2,09	4,3681			5,39	29,0521					2,47	6,1009
11	6,85	46,9225	2,63	6,9169	4,41	19,4481							3,17	10,0489
12	2,93	8,5849	2,18	4,7524					6,27	39,3129			1,42	2,0164
13	5,86	34,3396	2,55	6,5025	5,34	28,5156							4,23	17,8929
14	1,53	2,3409	1,48	2,1904							4,23	17,8929	1,22	1,4884
15	3,93	15,4449	1,63	2,6569			7,52	56,5504					3,41	11,6281
16	3,56	12,6736	2,08	4,3264			6,26	39,1876					4,27	18,2329
17	5,02	25,2004	2,88	8,2944			4,19	17,5561					4,49	20,1601
18	2,71	7,3441	2,76	7,6176	6,29	39,5641							1,08	1,1664
19	6,65	44,2225	2,86	8,1796							4,59	21,0681	1,04	1,0816
20	4,78	22,8484	2,81	7,8961					5,14	26,4196			2,19	4,7961
21	1,56	2,4336	2,31	5,3361	2,1	4,41							5,09	25,9081
22	1,41	1,9881	2,76	7,6176	3,11	9,6721							1,67	2,7889
23	3,93	15,4449	2,66	7,0756	2,12	4,4944							3,75	14,0625
24	2,78	7,7284	3,35	11,2225							1,53	2,3409	6,33	40,0689
25	3,63	13,1769	2,95	8,7025					1,85	3,4225			2,68	7,1824
26	5,51	30,3601	1,46	2,1316	2,62	6,8644							4,15	17,2225
27	3,56	12,6736	4,13	17,0569	2,53	6,4009							2,22	4,9284
28	6,75	45,5625	2,53	6,4009	3,43	11,7649							3,51	12,3201
29	4,56	20,7936	2,26	5,1076	2,63	6,9169							5,01	25,1001
30	1,46	2,1316	2,65	7,0225	4,27	18,2329							2,14	4,5796
31	3,65	13,3225	2,15	4,6225	4,03	16,2409							1,87	3,4969
32	1,76	3,0976	2,91	8,4681	2,58	6,6564	2,58	6,6564					6,23	38,8129
33	4,38	19,1844	3,35	11,2225	2,32	5,3824							6,98	48,7204
34	3,07	9,4249	2,68	7,1824	1,98	3,9204	1,98	3,9204					1,78	3,1684
35	3,45	11,9025	1,23	1,5129	3,03	9,1809	3,03	9,1809					4,96	24,6016
36	1,51	2,2801	4,05	16,4025	3,75	14,0625							3,38	11,4244
37	4,38	19,1844	2,01	4,0401	1,98	3,9204					1,98	3,9204	6,81	46,3761
38	6,61	43,6921	1,98	3,9204					2,73	7,4529			1,65	2,7225
39	4,03	16,2409	1,55	2,4025	3,18	10,1124							3,93	15,4449
40	1,56	2,4336	2,06	4,2436	1,98	3,9204					1,98	3,9204	5,19	26,9361
41	6,02	36,2404	3,12	9,7344	1,99	3,9601							4,02	16,1604
42	4,32	18,6624	1,04	1,0816	1,18	1,3924							3,23	10,4329
43	1,56	2,4336	1,98	3,9204			10,5	110,25					2,76	7,6176
44	1,41	1,9881	1,73	2,9929	4,44	19,7136							4,73	22,3729
45	3,93	15,4449	3,51	12,3201							9,03	81,5409	3,48	12,1104
46	2,78	7,7284	3,02	9,1204			10,5	110,25					2,76	7,6176
47	3,63	13,1769	2,07	4,2849	4,44	19,7136							4,73	22,3729
48	5,51	30,3601	3,31	10,9561							9,03	81,5409	3,48	12,1104
49	3,56	12,6736	1,06	1,1236	4,13	17,0569							3,31	10,9561
50	6,75	45,5625	3,93	15,4449	6,21	38,5641							4,48	20,0704
51	4,56	20,7936	2,53	6,4009							7,18	51,5524	2,51	6,3001
52	1,46	2,1316	2,21	4,8841	4,54	20,6116							4,78	22,8484
53	3,65	13,3225	2,55	6,5025	6,88	47,3344							2,53	6,4009
54	1,76	3,0976	2,08	4,3264	4,61	21,2521							2,26	5,1076
55	4,38	19,1844	1,86	3,4596			9,05	81,9025					2,65	7,0225
56	3,71	13,7641	2,33	5,4289			9,15	83,7225					4,46	19,8916
57	1,28	1,6384	1,47	2,1609			11,3	127,69					5,45	29,7025
58	4,21	17,7241	2,05	4,2025	5,15	26,5225							7,43	55,2049
59	2,23	4,9729	2,02	4,0804	4,65	21,6225							4,63	21,4369
60	1,48	2,1904	2,03	4,1209	5,53	30,5809							6,21	38,5641
61	3,07	9,4249	3,53	12,4609	6,39	40,8321							6,88	47,3344
62	3,45	11,9025	1,93	3,7249	5,47	29,9209							4,61	21,2521

63	1,51	2,2801	1,78	3,1684	7,25	52,5625							4,31	18,5761
64	4,38	19,1844	2,75	7,5625					10,42	108,576			5,98	35,7604
65	6,61	43,6921	3,02	9,1204	5,33	28,4089							7,55	57,0025
66	2,81	7,8961	1,86	3,4596	4,65	21,6225							5,07	25,7049
67	2,66	7,0756	2,21	4,8841				12,52	156,75				5,95	35,4025
68	3,98	15,8404	2,23	4,9729	6,23	38,8129							4,65	21,6225
69	3,71	13,7641	2,33	5,4289				9,15	83,7225				4,46	19,8916
70	1,28	1,6384	1,47	2,1609				11,3	127,69				5,45	29,7025
71	4,21	17,7241	2,05	4,2025	5,15	26,5225							7,43	55,2049
72	2,23	4,9729	2,02	4,0804	4,65	21,6225							4,63	21,4369
73	1,48	2,1904	2,03	4,1209	5,53	30,5809							6,21	38,5641
74	1,28	1,6384	3,18	10,1124	7,75	60,0625							5,39	29,0521
75	2,36	5,5696	2,16	4,6656					7,27	52,8529			4,41	19,4481
76	3,81	14,5161	2,29	5,2441	4,09	16,7281							6,27	39,3129
77	1,43	2,0449	2,43	5,9049				8,49	72,0801				5,34	28,5156
78	4,16	17,3056	3,28	10,7584	5,37	28,8369							4,23	17,8929
79	1,91	3,6481	2,06	4,2436	4,25	18,0625							7,52	56,5504
80	3,46	11,9716	1,58	2,4964				9,41	88,5481				6,26	39,1876
81	3,58	12,8164	2,44	5,9536				10,54	111,092				4,19	17,5561
82	1,61	2,5921	2,16	4,6656							11,02	121,44	6,29	39,5641
83	3,83	14,6689	2,21	4,8841	4,27	18,2329							4,59	21,0681
84	2,28	5,1984	2,43	5,9049	6,16	37,9456							5,14	26,4196
85	4,68	21,9024	2,03	4,1209					12,21	149,084			2,76	7,6176
86	5,86	34,3396	1,24	1,5376	5,58	31,1364							4,73	22,3729
87	1,53	2,3409	2,04	4,1616	4,75	22,5625		8,65	74,8225				3,48	12,1104
88	3,93	15,4449	2,44	5,9536						15,35	235,623		3,31	10,9561
89	3,56	12,6736	2,22	4,9284						7,12	50,6944		4,48	20,0704
90	5,02	25,2004	2,59	6,7081							19,24	370,178	2,51	6,3001
91	2,71	7,3441	2,46	6,0516	4,63	21,4369							4,78	22,8484
92	6,65	44,2225	2,25	5,0625	6,21	38,5641							3,16	9,9856
93	8,21	67,4041	2,26	5,1076				9,23	85,1929				3,53	12,4609
94	4,12	16,9744	2,27	5,1529	4,41	19,4481							4,78	22,8484
95	1,25	1,5625	2,75	7,5625	6,27	39,3129							2,31	5,3361
96	4,55	20,7025	2,23	4,9729				6,38	40,7044				2,43	5,9049
97	3,37	11,3569	2,06	4,2436	4,23	17,8929							3,41	11,6281
98	6,03	36,3609	2,52	6,3504				8,46	71,5716				3,28	10,7584
99	3,77	14,2129	1,75	3,0625				9,37	87,7969				4,46	19,8916
100	1,07	1,1449	2,15	4,6225	4,19	17,5561							4,73	22,3729
101	4,47	19,9809	1,57	2,4649					10,37	107,537			3,68	13,5424
102	3,09	9,5481	2,68	7,1824	7,35	54,0225							6,12	37,4544
103	6,88	47,3344	2,13	4,5369	5,14	26,4196							4,32	18,6624
104	1,58	2,4964	2,87	8,2369	7,52	56,5504							5,13	26,3169
105	4,33	18,7489	3,23	10,4329	6,26	39,1876							4,08	16,6464
106	1,45	2,1025	2,72	7,3984	6,29	39,5641							5,05	25,5025
107	2,01	4,0401	2,03	4,1209	4,59	21,0681							6,19	38,3161
108	4,82	23,2324	2,92	8,5264	5,41	29,2681							8,53	72,7609
109	1,06	1,1236	2,01	4,0401	4,63	21,4369							5,43	29,4849
110	6,75	45,5625	2,07	4,2849	6,21	38,5641							3,63	13,1769
111	2,08	4,3264	2,68	7,1824	5,39	29,0521							7,27	52,8529
112	3,01	9,0601	3,08	9,4864	4,41	19,4481							8,03	64,4809
113	2,42	5,8564	3,85	14,8225	6,27	39,3129							3,41	11,6281
114	5,93	35,1649	1,95	3,8025	5,34	28,5156							3,28	10,7584
115	4,13	17,0569	3,02	9,1204	4,23	17,8929							4,46	19,8916
116	2,23	4,9729	2,28	5,1984	7,52	56,5504							4,73	22,3729
117	1,72	2,9584	3,12	9,7344					6,38	40,7044			3,02	9,1204
118	2,32	5,3824	3,07	9,4249	4,23	17,8929							4,41	19,4481
119	2,25	5,0625	2,77	7,6729				6,34	40,1956				3,38	11,4244
120	2,55	6,5025	1,98	3,9204				5,54	30,6916				3,58	12,8164
121	3,33	11,0889	4,25	18,0625	4,44	19,7136							2,59	6,7081
122	2,04	4,1616	1,95	3,8025							5,42	29,3764	3,11	9,6721
123	2,05	4,2025	3,08	9,4864	4,13	17,0569							3,36	11,2896
124	2,35	5,5225	2,63	6,9169	6,21	38,5641							2,23	4,9729
125	1,68	2,8224	2,47	6,1009							4,11	16,8921	3,16	9,9856
126	2,33	5,4289	2,04	4,1616	4,54	20,6116							2,27	5,1529
127	4,18	17,4724	1,95	3,8025							7,22	52,1284	2,39	5,7121
128	1,73	2,9929	2,53	6,4009							5,47	29,9209	3,09	9,5481

129	2,42	5,8564	4,06	16,4836	4,09	16,7281							4,31	18,5761
130	2,55	6,5025	2,92	8,5264	5,33	28,4089							3,23	10,4329
131	4,38	19,1844	2,25	5,0625	6,12	37,4544							2,35	5,5225
132	1,75	3,0625	2,05	4,2025					4,32	18,6624			2,48	6,1504
133	2,82	7,9524	3,68	13,5424							5,13	26,3169	4,05	16,4025
134	1,25	1,5625	2,75	7,5625	4,08	16,6464							2,05	4,2025
135	4,55	20,7025	2,23	4,9729			5,05	25,5025					3,55	12,6025
136	3,37	11,3569	2,36	5,5696			6,19	38,3161					4,21	17,7241
137	6,03	36,3609	2,52	6,3504	3,54	12,5316							3,19	10,1761
138	3,77	14,2129	1,75	3,0625			5,22	27,2484					2,14	4,5796
139	1,07	1,1449	2,15	4,6225			4,06	16,4836					4,45	19,8025
140	4,47	19,9809	1,57	2,4649							5,21	27,1441	2,18	4,7524
141	3,09	9,5481	2,68	7,1824	6,39	40,8321							3,12	9,7344
142	6,88	47,3344	2,13	4,5369	5,47	29,9209							3,17	10,0489
143	1,58	2,4964	2,87	8,2369					7,25	52,5625			4,51	20,3401
144	4,33	18,7489	3,23	10,4329	4,26	18,1476							2,29	5,2441
145	1,45	2,1025	2,72	7,3984			5,33	28,4089					2,31	5,3361
146	2,01	4,0401	2,3	5,29					4,65	21,6225			3,34	11,1556
147	4,82	23,2324	2,92	8,5264					7,04	49,5616			2,65	7,0225
148	1,06	1,1236	2,41	5,8081	6,13	37,5769							2,22	4,9284
149	6,75	45,5625	2,37	5,6169	5,15	26,5225							2,13	4,5369
150	2,08	4,3264	2,68	7,1824	4,75	22,5625							3,03	9,1809
151	3,01	9,0601	3,08	9,4864	5,15	26,5225							3,02	9,1204
152	2,42	5,8564	3,85	14,8225	4,65	21,6225							1,82	3,3124
153	5,93	35,1649	1,95	3,8025					5,53	30,5809			2,52	6,3504
154	4,15	17,2225	2,05	4,2025			7,75	60,0625					4,23	17,8929
155	2,02	4,0804	2,31	5,3361	6,23	38,8129							2,25	5,0625
156	3,51	12,3201	1,65	2,7225			4,67	21,8089					3,02	9,1204
157	5,01	25,1001	1,66	2,7556	7,07	49,9849							1,55	2,4025
158	2,04	4,1616	1,23	1,5129							6,87	47,1969	3,26	10,6276
159	1,87	3,4969	2,03	4,1209	5,78	33,4084							1,34	1,7956
160	6,23	38,8129	3,53	12,4609	4,72	22,2784							3,29	10,8241
161	6,98	48,7204	3,66	13,3956					7,77	60,3729			1,12	1,2544
162	1,78	3,1684	2,55	6,5025	5,05	25,5025							3,33	11,0889
163	4,96	24,6016	1,09	1,1881	7,28	52,9984							5,64	31,8096
164	3,08	9,4864	1,68	2,8224			5,07	25,7049					4,02	16,1604
165	6,81	46,3761	2,67	7,1289	4,22	17,8084							4,23	17,8929
166	1,41	1,9881	2,46	6,0516			5,03	25,3009					1,18	1,3924
167	5,28	27,8784	2,58	6,6564	7,82	61,1524							1,36	1,8496
168	2,45	6,0025	3,01	9,0601			5,18	26,8324					3,45	11,9025
169	6,73	45,2929	3,36	11,2896			5,06	25,6036					4,22	17,8084
170	3,88	15,0544	1,13	1,2769	4,02	16,1604							3,43	11,7649
171	4,04	16,3216	2,68	7,1824	6,03	36,3609							2,41	5,8081
172	2,05	4,2025	2,96	8,7616							5,38	28,9444	3,55	12,6025
173	5,51	30,3601	3,31	10,9561							9,03	81,5409	3,48	12,1104
174	3,56	12,6736	1,06	1,1236	4,13	17,0569							3,31	10,9561
175	1,18	1,3924	3,61	13,0321							10,34	106,916	4,35	18,9225
176	2,77	7,6729	2,56	6,5536	6,15	37,8225							1,41	1,9881
177	5,78	33,4084	1,86	3,4596	4,16	17,3056							4,03	16,2409
178	1,85	3,4225	3,28	10,7584	5,46	29,8116							4,28	18,3184
179	5,71	32,6041	2,16	4,6656	4,21	17,7241							4,32	18,6624
180	1,93	3,7249	2,81	7,8961									3,33	11,0889
181	6,83	46,6489	1,63	2,6569									2,47	6,1009
182	6,38	40,7044	1,73	2,9929	4,81	23,1361							3,17	10,0489
183	1,86	3,4596	1,65	2,7225	4,23	17,8929							1,42	2,0164
184	4,43	19,6249	2,05	4,2025			8,12	65,9344					4,23	17,8929
185	1,58	2,4964	3,71	13,7641					13,45	180,903			3,22	10,3684
186	3,45	11,9025	2,61	6,8121			6,32						3,41	11,6281
187	6,75	45,5625	1,33	1,7689							7,54	56,8516	4,27	18,2329
188	2,02	4,0804	2,98	8,8804	2,53	6,4009							4,49	20,1601
189	3,08	9,4864	2,25	5,0625	3,43	11,7649							1,08	1,1664
190	4,06	16,4836	1,98	3,9204	2,63	6,9169							1,04	1,0816
191	2,43	5,9049	3,11	9,6721			4,59	21,0681					2,19	4,7961
192	1,58	2,4964	3,45	11,9025	4,16	17,3056							1,31	1,7161
193	2,43	5,9049	3,16	9,9856	5,46	29,8116							2,51	6,3001
194	3,09	9,5481	2,53	6,4009							10,56	111,514	4,78	22,8484

195	1,13	1,2769	1,7	2,89					10,45	109,203			3,16	9,9856
196	5,03	25,3009	2,65	7,0225	4,27	18,2329							3,53	12,4609
197	1,88	3,5344	2,63	6,9169	4,23	17,8929							4,78	22,8484
198	4,23	17,8929	1,51	2,2801						6,87	47,1969		2,31	5,3361
199	3,38	11,4244	3,13	9,7969	5,15	26,5225							2,43	5,9049
200	2,51	6,3001	3,11	9,6721	4,65	21,6225							3,41	11,6281
201	1,88	3,5344	2,55	6,5025	5,53	30,5809							3,28	10,7584
202	2,08	4,3264	2,68	7,1824	7,75	60,0625							4,46	19,8916
203	5,96	35,5216	2,75	7,5625	3,43	11,7649							4,73	22,3729
204	4,56	20,7936	1,65	2,7225	2,63	6,9169							3,68	13,5424
205	1,58	2,4964	3,45	11,9025	4,27	18,2329							2,19	4,7961
206	2,43	5,9049	3,06	9,3636	4,03	16,2409							5,09	25,9081
207	3,09	9,5481	2,53	6,4009			6,19	38,3161					1,67	2,7889
208	1,13	1,2769	1,67	2,7889	5,05	25,5025							3,75	14,0625
209	5,03	25,3009	2,05	4,2025	7,28	52,9984							6,33	40,0689
210	1,88	3,5344	2,63	6,9169						6,59	43,4281		2,68	7,1824
211	1,91	3,6481	2,28	5,1984			7,31	53,4361					4,15	17,2225
212	3,96	15,6816	2,07	4,2849			5,6	31,36					2,22	4,9284
213	6,88	47,3344	1,59	2,5281	5,06	25,6036							3,51	12,3201
214	5,36	28,7296	2,43	5,9049					5,12	26,2144			5,01	25,1001
215	3,28	10,7584	2,95	8,7025							9,24	85,3776	2,14	4,5796
216	6,61	43,6921	2,73	7,4529	5,78	33,4084							1,87	3,4969
217	3,93	15,4449	3,43	11,7649	4,72	22,2784							7,55	57,0025
218	2,81	7,8961	2,78	7,7284					8,46	71,5716			5,07	25,7049
219	5,41	29,2681	2,31	5,3361							7,34	53,8756	5,95	35,4025
220	4,83	23,3289	2,34	5,4756					14,54	211,412			4,65	21,6225
221	3,29	10,8241	2,39	5,7121	7,34	53,8756							4,46	19,8916
222	2,31	5,3361	2,19	4,7961			6,59	43,4281					5,45	29,7025
223	3,17	10,0489	1,43	2,0449	6,19	38,3161							7,43	55,2049
224	1,26	1,5876	1,32	1,7424	5,41	29,2681							4,63	21,4369
225	2,13	4,5369	2,33	5,4289						6,34	40,1956		6,21	38,5641
226	1,27	1,6129	2,53	6,4009	4,26	18,1476							5,39	29,0521
227	5,03	25,3009	1,26	1,5876	5,33	28,4089							4,41	19,4481
228	2,73	7,4529	2,44	5,9536	4,41	19,4481							4,32	18,6624
229	3,68	13,5424	2,03	4,1209			9,15	83,7225					3,33	11,0889
230	2,81	7,8961	2,31	5,3361	7,39	54,6121							2,47	6,1009
231	4,44	19,7136	2,18	4,7524					9,45	89,3025			4,25	18,0625
232	3,08	9,4864	2,82	7,9524					5,28	27,8784			4,42	19,5364
233	4,06	16,4836	1,25	1,5625	4,38	19,1844							3,15	9,9225
234	2,43	5,9049	4,55	20,7025	5,65	31,9225							2,05	4,2025
235	1,58	2,4964	3,37	11,3569							7,46	55,6516	4,35	18,9225
236	2,43	5,9049	6,03	36,3609	5,48	30,0304							1,41	1,9881
237	3,09	9,5481	3,77	14,2129	4,75	22,5625							4,03	16,2409
238	1,13	1,2769	1,07	1,1449	6,15	37,8225							4,28	18,3184
239	5,03	25,3009	4,47	19,9809	4,16	17,3056							4,32	18,6624
240	1,88	3,5344	3,09	9,5481	5,46	29,8116							3,33	11,0889
241	4,23	17,8929	6,88	47,3344	4,21	17,7241							2,47	6,1009
242	3,38	11,4244	1,58	2,4964	4,81	23,1361							3,17	10,0489
243	2,51	6,3001	4,33	18,7489	6,31	39,8161							1,42	2,0164
244	1,88	3,5344	1,45	2,1025	4,37	19,0969							4,23	17,8929
245	2,08	4,3264	2,01	4,0401	7,07	49,9849							3,22	10,3684
246	5,96	35,5216	4,82	23,2324	5,16	26,6256							3,41	11,6281
247	4,56	20,7936	1,06	1,1236							4,48	20,0704	4,27	18,2329
248	2,65	7,0225	3,93	15,4449			6,25	39,0625					4,49	20,1601
249	3,02	9,1204	2,78	7,7284			7,07	49,9849					1,08	1,1664
250	5,03	25,3009	3,63	13,1769	4,25	18,0625							1,04	1,0816
251	3,88	15,0544	5,51	30,3601					5,12	26,2144			2,19	4,7961
252	5,43	29,4849	3,56	12,6736					5,28	27,8784			1,31	1,7161
253	1,21	1,4641	6,75	45,5625	4,38	19,1844							1,83	3,3489
254	6,85	46,9225	4,56	20,7936	5,65	31,9225							2,96	8,7616
255	2,93	8,5849	1,46	2,1316			7,46	55,6516					2,76	7,6176
256	5,86	34,3396	3,65	13,3225			5,48	30,0304					4,73	22,3729
257	1,53	2,3409	1,76	3,0976	4,75	22,5625							3,48	12,1104
258	3,93	15,4449	4,38	19,1844	6,15	37,8225							3,31	10,9561
259	3,56	12,6736	3,07	9,4249	4,16	17,3056							4,48	20,0704
260	5,02	25,2004	3,45	11,9025							5,46	29,8116	5,51	30,3601

261	2,71	7,3441	1,51	2,2801	4,21	17,7241							4,78	22,8484
262	6,65	44,2225	4,38	19,1844					4,81	23,1361			3,16	9,9856
263	4,78	22,8484	6,61	43,6921	6,31	39,8161							3,53	12,4609
264	1,56	2,4336	2,81	7,8961	4,37	19,0969							4,78	22,8484
265	1,41	1,9881	2,66	7,0756	4,57	20,8849							2,31	5,3361
266	3,93	15,4449	3,98	15,8404	5,16	26,6256							2,43	5,9049
267	2,78	7,7284	3,71	13,7641	4,48	20,0704							3,41	11,6281
268	3,63	13,1769	1,28	1,6384	6,25	39,0625							3,28	10,7584
269	5,51	30,3601	4,21	17,7241						7,07	49,9849		4,46	19,8916
270	3,56	12,6736	2,23	4,9729	4,25	18,0625							4,73	22,3729
271	6,75	45,5625	1,48	2,1904					5,12	26,2144			3,18	10,1124
272	1,46	2,1316	2,36	5,5696	6,38	40,7044							2,23	4,9729
273	3,65	13,3225	3,81	14,5161	4,23	17,8929							3,16	9,9856
274	1,76	3,0976	2,11	4,4521						6,34	40,1956		2,27	5,1529
275	4,38	19,1844	2,25	5,0625			5,54	30,6916					2,39	5,7121
276	3,07	9,4249	2,76	7,6176	4,44	19,7136							3,09	9,5481
277	3,45	11,9025	1,56	2,4336	5,42	29,3764							4,31	18,5761
278	1,51	2,2801	3,51	12,3201	4,13	17,0569							3,23	10,4329
279	4,38	19,1844	3,71	13,7641					6,21	38,5641			2,35	5,5225
280	3,83	14,6689	2,66	7,0756	4,11	16,8921							2,48	6,1504
281	2,28	5,1984	2,03	4,1209	4,54	20,6116							4,05	16,4025
282	4,68	21,9024	2,18	4,7524					7,22	52,1284			2,05	4,2025
283	5,86	34,3396	2,36	5,5696	5,47	29,9209							3,55	12,6025
284	1,53	2,3409	2,92	8,5264	4,09	16,7281							4,21	17,7241
285	3,93	15,4449	2,08	4,3264			5,33	28,4089					3,19	10,1761
286	3,56	12,6736	2,87	8,2369	6,12	37,4544							2,14	4,5796
287	5,02	25,2004	2,38	5,6644			4,32	18,6624					4,45	19,8025
288	2,71	7,3441	1,15	1,3225	5,13	26,3169							2,18	4,7524
289	6,65	44,2225	3,25	10,5625			4,08	16,6464					3,12	9,7344
290	8,21	67,4041	2,31	5,3361			5,05	25,5025					3,17	10,0489
291	4,12	16,9744	3,05	9,3025	6,19	38,3161							4,51	20,3401
292	1,25	1,5625	2,06	4,2436	5,41	29,2681							2,29	5,2441
293	6,98	48,7204	1,61	2,5921						4,63	21,4369		2,31	5,3361
294	1,78	3,1684	1,86	3,4596	6,21	38,5641							5,98	35,7604
295	4,96	24,6016	2,46	6,0516	5,39	29,0521							7,55	57,0025
296	3,08	9,4864	2,48	6,1504	4,41	19,4481							5,07	25,7049
297	6,81	46,3761	2,21	4,8841					6,27	39,3129			5,95	35,4025
298	1,41	1,9881	3,36	11,2896	5,34	28,5156							4,65	21,6225
299	5,28	27,8784	1,13	1,2769	4,23	17,8929							4,46	19,8916
300	2,45	6,0025	2,68	7,1824						7,52	56,5504		5,45	29,7025
301	6,73	45,2929	2,96	8,7616						6,26	39,1876		7,43	55,2049
302	3,88	15,0544	3,61	13,0321						4,19	17,5561		4,63	21,4369
303	1,85	3,4225	2,56	6,5536	6,29	39,5641							6,21	38,5641
304	5,55	30,8025	1,86	3,4596	4,59	21,0681							5,39	29,0521
305	1,53	2,3409	3,28	10,7584			7,25	52,5625					4,41	19,4481
306	2,83	8,0089	2,16	4,6656	4,26	18,1476							4,32	18,6624
307	4,08	16,6464	2,81	7,8961	5,33	28,4089							3,33	11,0889
308	3,51	12,3201	1,63	2,6569			4,65	21,6225					2,47	6,1009
309	6,15	37,8225	1,73	2,9929	7,04	49,5616							3,17	10,0489
310	2,23	4,9729	1,65	2,7225			6,13	37,5769					1,42	2,0164
311	4,33	18,7489	2,05	4,2025			5,15	26,5225					4,23	17,8929
312	3,16	9,9856	3,71	13,7641	4,75	22,5625							1,22	1,4884
313	1,25	1,5625	3,41	11,6281					5,15	26,5225			3,41	11,6281
314	4,51	20,3401	1,27	1,6129	4,65	21,6225							4,27	18,2329
315	2,38	5,6644	2,65	7,0225	5,53	30,5809							4,49	20,1601
316	1,95	3,8025	2,63	6,9169	6,53	42,6409							1,08	1,1664
317	5,97	35,6409	1,51	2,2801					5,45	29,7025			1,04	1,0816
318	3,33	11,0889	3,13	9,7969	4,53	20,5209							2,19	4,7961
319	2,23	4,9729	3,11	9,6721			5,03	25,3009					5,09	25,9081
320	1,15	1,3225	2,55	6,5025	4,92	24,2064							1,67	2,7889
321	1,78	3,1684	1,25	1,5625						6,23	38,8129		3,75	14,0625
322	6,04	36,4816	1,95	3,8025					5,98	35,7604			4,12	16,9744
N	322		322		195		59		34		38		322	
Jumlah	1127,53	4865,93	820,58	2344,92	965,57	5101,45	393,15	2889,04	244,17	2086,92	254,38	2048,78	1199,71	5186,68
Kuadrat	1271324	2,4E+07	673352	5498670	932325	2,6E+07	154567	8346576	59619	4355215	64709,2	4197505	1439304	2,7E+07
N'	4,64878		2,42708		1,33982		2,05564		3,80286		4,06264		3,20719	

Lampiran 2. Uji Kecukupan Data

Rumus:

$$N' = \left[\frac{\frac{k}{s} \sqrt{N \sum X^2 - \sum X^2}}{\sum X} \right]^2$$

Waktu Antar Kedatangan Pasien

$$N' = \left[\frac{\frac{2}{0,05} \sqrt{(322 * 4.865,93) - 1.271.324}}{1.127,53} \right]^2 = 9,29755$$

Waktu Pelayanan Pendaftaran

$$N' = \left[\frac{\frac{2}{0,05} \sqrt{(322 * 2.344,92) - 673.352}}{8820,58} \right]^2 = 4,85417$$

Waktu Pelayanan Poli Umum

$$N' = \left[\frac{\frac{2}{0,05} \sqrt{(195 * 5.101,45) - 932.325}}{965,57} \right]^2 = 2,67964$$

Waktu Pelayanan Poli KIA

$$N' = \left[\frac{\frac{2}{0,05} \sqrt{(59 * 2.889,04) - 154.567}}{393,15} \right]^2 = 4,11127$$

Waktu Pelayanan Poli Gigi

$$N' = \left[\frac{\frac{2}{0,05} \sqrt{(34 * 2.086,92) - 59.619}}{244,17} \right]^2 = 7,60571$$

Waktu Pelayanan Laboratorium

$$N' = \left[\frac{\frac{2}{0,05} \sqrt{(38 * 2.048,78) - 64.709,2}}{254,38} \right]^2 = 8,12528$$

Waktu Pelayanan Farmasi dan Kasir

$$N' = \left[\frac{\frac{2}{0,05} \sqrt{(322 * 5.186,68) - 1.439.304}}{1.199,71} \right]^2 = 6,41438$$

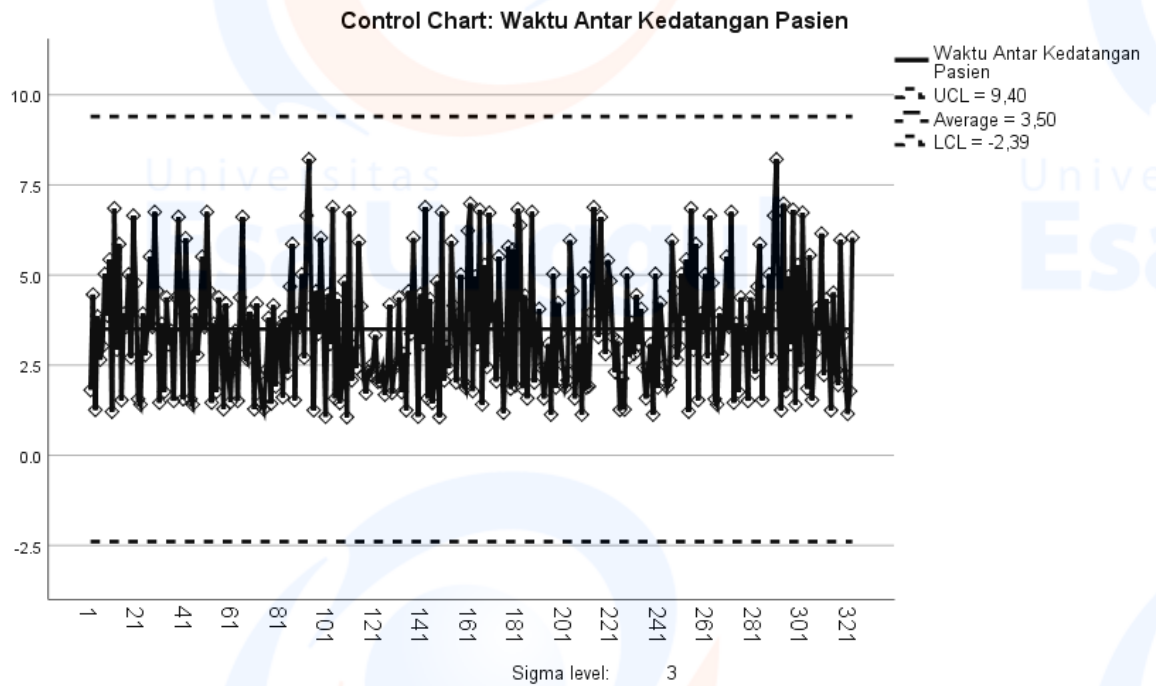
Lampiran 3 Uji Idenpendence (Uji Runs)

	Runs Test						
	Waktu Antar Kedatangan Pasien	Waktu Pelayanan Pendaftaran	Waktu Pelayanan Poli Umum	Waktu Pelayanan Poli KIA	Waktu Pelayanan Poli Gigi	Waktu Pelayanan Laboratorium	Waktu Pelayanan Farmasi dan Kasir
Test Value ^a	3	2	5	6	6	6	4
Cases < Test Value	161	161	95	28	17	18	160
Cases >= Test Value	161	161	100	31	17	20	162
Total Cases	322	322	195	59	34	38	322
Number of Runs	200	163	105	17	15	13	131
Z	4.242	.112	.943	-3.535	-.871	-2.127	-3.460
Asymp. Sig. (2-tailed)	.000	.911	.346	.000	.384	.033	.001

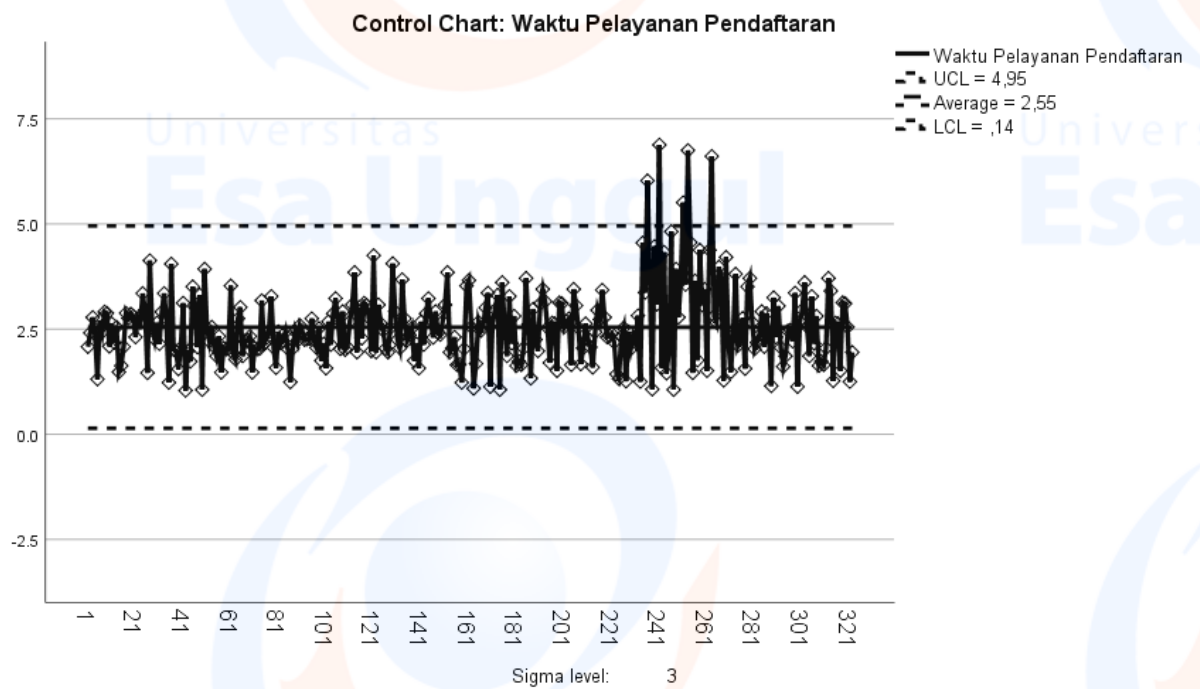
a. Median

Lampiran 4. Uji Keseragaman Data

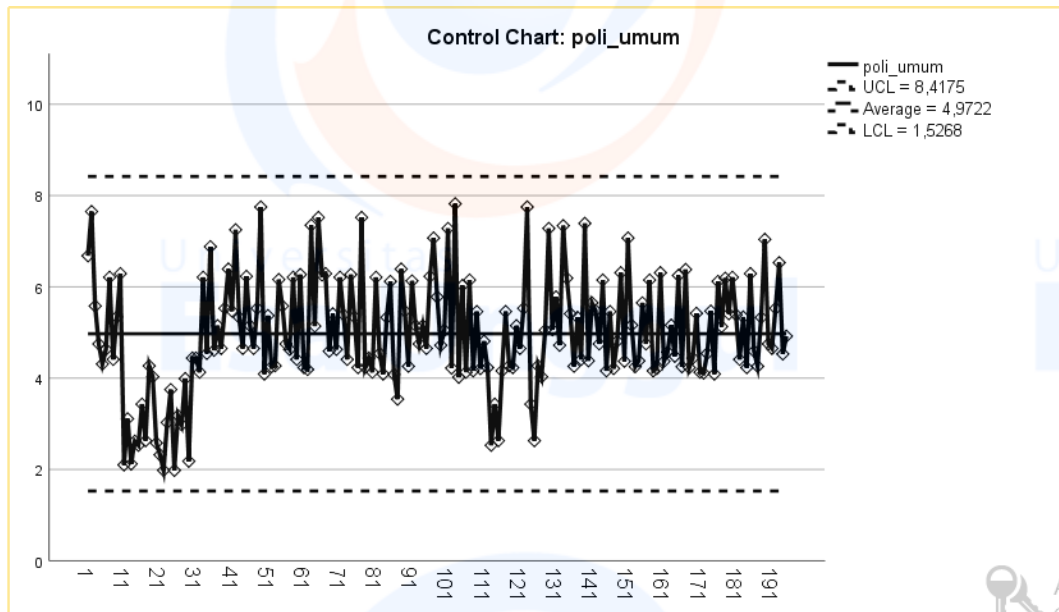
Waktu Antar Kedatangan Pasien



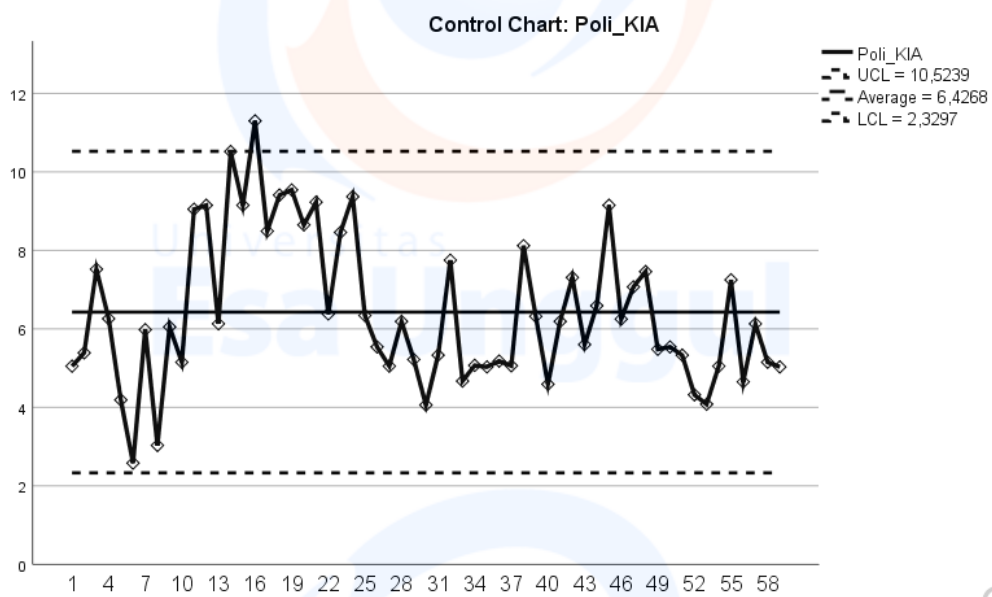
Waktu Pelayanan Pendaftaran



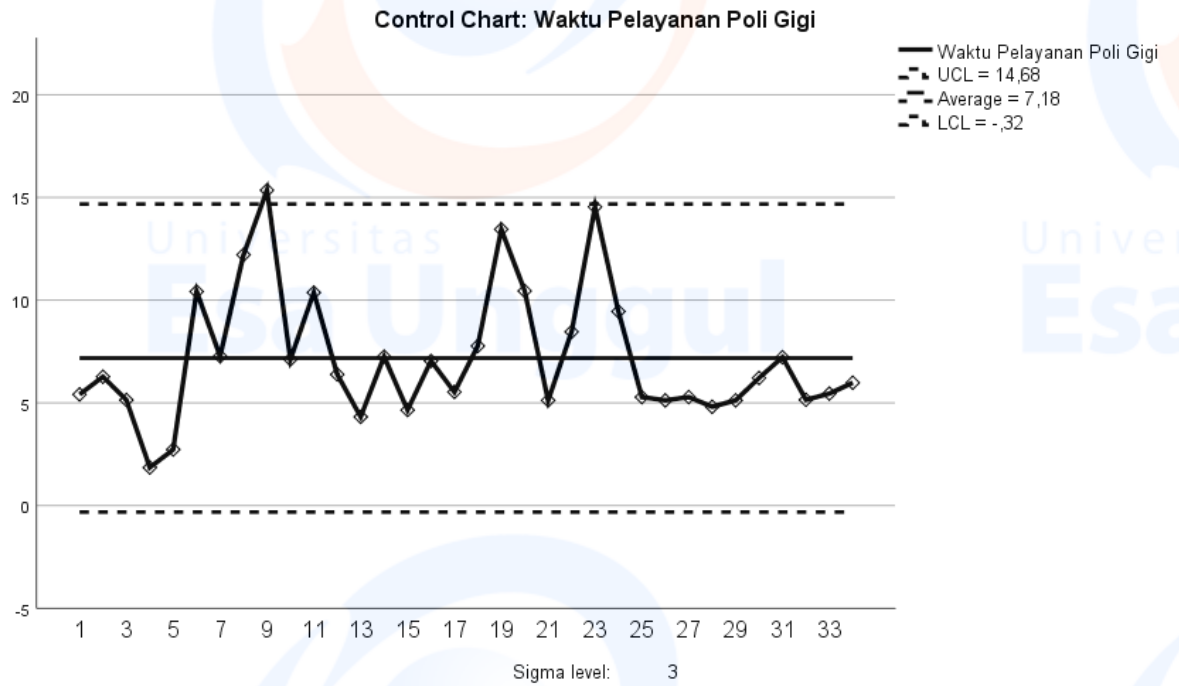
Waktu Pelayanan Poli Umum



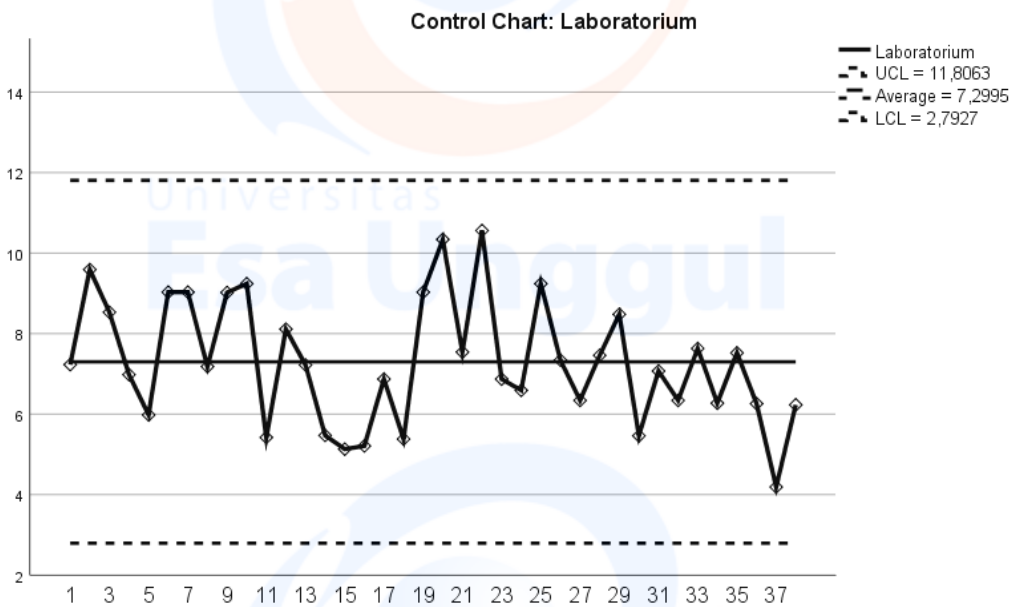
Waktu Pelayanan Poli KIA



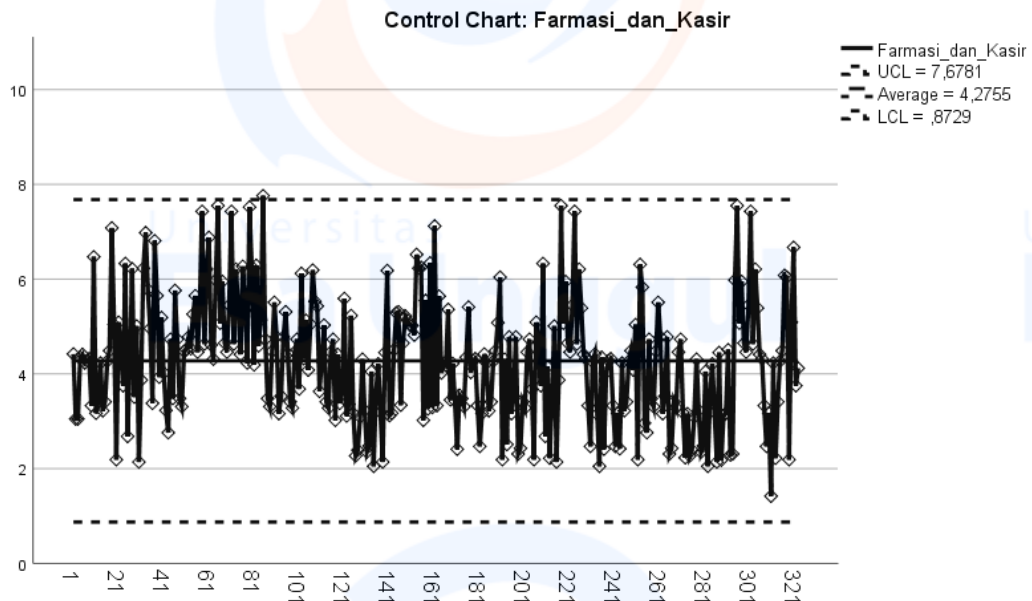
Waktu Pelayanan Poli Gigi



Waktu Pelayanan Laboratorium



Waktu Pelayanan Farmasi dan Kasir



Lampiran 5. Uji Distribusi Data

Descriptive Statistics

	N	Minimum	Maximum	Mean	Std. Deviation
Waktu Antar Kedatangan Pasien	322	1	8	3.50	1.691
Waktu Pelayanan Pendaftaran	322	1	7	2.55	.889
Waktu Pelayanan Poli Umum	195	1	8	4.95	1.285
Waktu Pelayanan Poli KIA	59	2	13	6.66	2.309
Waktu Pelayanan Poli Gigi	34	2	15	7.18	3.179
Waktu Pelayanan Laboratorium	38	2	19	6.69	3.058
Waktu Pelayanan Farmasi dan Kasir	322	1	9	3.73	1.494
Valid N (listwise)	0				



Universitas
Esa Unggul

Universitas
Esa Unggul

Universitas
Esa Unggul

Universita
Esa U

Universita
Esa U

Universita
Esa U

Normal

One-Sample Kolmogorov-Smirnov Test

	Waktu Antar Kedatangan Pasien	Waktu Pelayanan Pendaftaran	Waktu Pelayanan Poli Umum	Waktu Pelayanan Poli KIA	Waktu Pelayanan Poli Gigi	Waktu Pelayanan Laboratorium	Waktu Pelayanan Farmasi dan Kasir	
N	322	322	195	59	34	38	322	
Normal Parameters ^{a,b}	Mean	3.50	2.55	4.95	6.66	7.18	6.69	3.73
	Std. Deviation	1.691	.889	1.285	2.309	3.179	3.058	1.494
Most Extreme Differences	Absolute	.087	.087	.116	.142	.195	.181	.069
	Positive	.087	.087	.080	.142	.195	.181	.069
	Negative	-.074	-.055	-.116	-.079	-.125	-.120	-.046
Test Statistic	.087	.087	.116	.142	.195	.181	.069	
Asymp. Sig. (2-tailed)	.000 ^c	.000 ^c	.000 ^c	.005 ^c	.002 ^c	.003 ^c	.001 ^c	

a. Test distribution is Normal.

b. Calculated from data.

c. Lilliefors Significance Correction.

Uniform

One-Sample Kolmogorov-Smirnov Test 2

	Waktu Antar Kedatangan Pasien	Waktu Pelayanan Pendaftaran	Waktu Pelayanan Poli Umum	Waktu Pelayanan Poli KIA	Waktu Pelayanan Poli Gigi	Waktu Pelayanan Laboratorium	Waktu Pelayanan Farmasi dan Kasir	
N	322	322	195	59	34	38	322	
Uniform Parameters ^{a,b}	Minimum	1	1	2	2	2	1	
	Maximum	8	7	8	13	15	19	9
Most Extreme Differences	Absolute	.274	.468	.310	.193	.304	.459	.330
	Positive	.274	.468	.123	.193	.304	.459	.330
	Negative	-.006	-.005	-.310	-.146	-.124	-.067	-.032
Kolmogorov-Smirnov Z	4.925	8.403	4.326	1.485	1.775	2.832	5.919	
Asymp. Sig. (2-tailed)	.000	.000	.000	.024	.004	.000	.000	

a. Test distribution is Uniform.

b. Calculated from data.

Poisson

One-Sample Kolmogorov-Smirnov Test 3

		Waktu Antar Kedatangan Pasien	Waktu Pelayanan Pendaftaran	Waktu Pelayanan Poli Umum	Waktu Pelayanan Poli KIA	Waktu Pelayanan Poli Gigi	Waktu Pelayanan Laboratorium	Waktu Pelayanan Farmasi dan Kasir
N		322 ^c	322 ^d	195 ^e	59 ^f	34 ^g	38 ^h	322 ^d
Poisson Parameter ^{a,b}	Mean	3.50	2.55	4.95	6.66	7.18	6.69	3.73

a. Test distribution is Poisson.

b. Calculated from data.

c. Poisson variables are non-negative integers. The value 1 occurs in the data. One-Sample Kolmogorov-Smirnov Test cannot be performed.

d. Poisson variables are non-negative integers. The value 1 occurs in the data. One-Sample Kolmogorov-Smirnov Test cannot be performed.

e. Poisson variables are non-negative integers. The value 1 occurs in the data. One-Sample Kolmogorov-Smirnov Test cannot be performed.

f. Poisson variables are non-negative integers. The value 2 occurs in the data. One-Sample Kolmogorov-Smirnov Test cannot be performed.

g. Poisson variables are non-negative integers. The value 2 occurs in the data. One-Sample Kolmogorov-Smirnov Test cannot be performed.

h. Poisson variables are non-negative integers. The value 2 occurs in the data. One-Sample Kolmogorov-Smirnov Test cannot be performed.

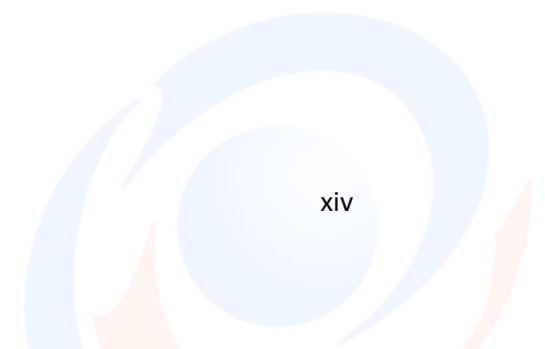
Exponential

One-Sample Kolmogorov-Smirnov Test 4

		Waktu Antar Kedatangan Pasien	Waktu Pelayanan Pendaftaran	Waktu Pelayanan Poli Umum	Waktu Pelayanan Poli KIA	Waktu Pelayanan Poli Gigi	Waktu Pelayanan Laboratorium	Waktu Pelayanan Farmasi dan Kasir
N		322	322	195	59	34	38	322
Exponential parameter. ^{a,b}	Mean	3.50	2.55	4.95	6.66	7.18	6.69	3.73
Most Extreme Differences	Absolute	.266	.369	.438	.405	.393	.380	.321
	Positive	.130	.159	.206	.167	.118	.166	.139
	Negative	-.266	-.369	-.438	-.405	-.393	-.380	-.321
Kolmogorov-Smirnov Z		4.778	6.616	6.117	3.114	2.293	2.342	5.755
Asymp. Sig. (2-tailed)		.000	.000	.000	.000	.000	.000	.000

a. Test Distribution is Exponential.

b. Calculated from data.



Lampiran 6. Kondisi sekarang

General Report (Normal Run - All Reps)

General | Locations | Location States Multi | Location States Single | Failed Arrivals | Entity Activity | Entity States

asli.MOD (Normal Run - All Reps)

Name	Replication	Scheduled Time (HR)	Capacity	Total Entries	Avg Time Per Entry (MIN)	Avg Contents	Maximum Contents	Current Contents	% Utilization
MASUK	1	5,00	5,00	50,00	3,91	0,65	1,00	1,00	65,09
MASUK	2	5,00	5,00	28,00	8,48	0,79	1,00	1,00	79,13
MASUK	3	5,00	5,00	32,00	7,27	0,78	1,00	1,00	77,51
MASUK	4	5,00	5,00	45,00	4,72	0,71	1,00	1,00	70,73
MASUK	5	5,00	5,00	32,00	7,56	0,81	1,00	1,00	80,63
ANTRIAN PENDAFTARAN	1	5,00	999999,00	49,00	66,88	10,92	15,00	15,00	71,52
ANTRIAN PENDAFTARAN	2	5,00	999999,00	27,00	124,22	11,18	15,00	15,00	73,20
ANTRIAN PENDAFTARAN	3	5,00	999999,00	31,00	93,67	9,68	15,00	15,00	63,38
ANTRIAN PENDAFTARAN	4	5,00	999999,00	44,00	76,34	11,20	15,00	15,00	73,31
ANTRIAN PENDAFTARAN	5	5,00	999999,00	31,00	114,54	11,84	15,00	14,00	77,50
PENDAFTARAN	1	5,00	5,00	34,00	8,63	0,98	1,00	1,00	97,84
PENDAFTARAN	2	5,00	5,00	12,00	23,10	0,92	1,00	1,00	92,42
PENDAFTARAN	3	5,00	5,00	16,00	16,41	0,88	1,00	1,00	87,53
PENDAFTARAN	4	5,00	5,00	29,00	10,15	0,98	1,00	1,00	98,16
PENDAFTARAN	5	5,00	5,00	17,00	16,85	0,95	1,00	1,00	95,48
POLI UMUM	1	5,00	5,00	5,00	57,28	0,95	1,00	1,00	95,47
POLI UMUM	2	5,00	5,00	4,00	66,73	0,89	1,00	1,00	88,97
POLI UMUM	3	5,00	5,00	5,00	58,49	0,97	1,00	1,00	97,48
POLI UMUM	4	5,00	5,00	3,00	96,78	0,97	1,00	1,00	96,78
POLI UMUM	5	5,00	5,00	4,00	70,47	0,94	1,00	1,00	93,96
POLI KIA	1	5,00	5,00	7,00	38,93	0,91	1,00	1,00	90,83
POLI KIA	2	5,00	5,00	2,00	130,45	0,87	1,00	1,00	86,97
POLI KIA	3	5,00	5,00	2,00	141,24	0,94	1,00	1,00	94,16
POLI KIA	4	5,00	5,00	7,00	39,34	0,92	1,00	1,00	91,80
POLI KIA	5	5,00	5,00	3,00	93,08	0,93	1,00	1,00	93,08
POLI GIGI	1	5,00	5,00	11,00	22,29	0,82	1,00	1,00	81,73
POLI GIGI	2	5,00	5,00	2,00	128,33	0,86	1,00	1,00	85,55
POLI GIGI	3	5,00	5,00	4,00	62,27	0,83	1,00	1,00	83,03
POLI GIGI	4	5,00	5,00	12,00	22,21	0,89	1,00	1,00	88,82
POLI GIGI	5	5,00	5,00	3,00	94,53	0,95	1,00	1,00	94,53
LABORATORIUM	1	5,00	5,00	9,00	25,03	0,75	1,00	1,00	75,09
LABORATORIUM	2	5,00	5,00	2,00	128,33	0,86	1,00	1,00	85,55
LABORATORIUM	3	5,00	5,00	3,00	84,60	0,85	1,00	1,00	84,60
LABORATORIUM	4	5,00	5,00	5,00	53,24	0,89	1,00	1,00	88,73
LABORATORIUM	5	5,00	5,00	6,00	44,25	0,89	1,00	1,00	88,51
FARMASI dan Kasir	1	5,00	5,00	28,00	8,53	0,80	1,00	1,00	79,62
FARMASI dan Kasir	2	5,00	5,00	6,00	45,01	0,90	1,00	1,00	90,01
FARMASI dan Kasir	3	5,00	5,00	10,00	24,91	0,83	1,00	1,00	83,04
FARMASI dan Kasir	4	5,00	5,00	23,00	7,72	0,59	1,00	1,00	59,20
FARMASI dan Kasir	5	5,00	5,00	12,00	22,76	0,91	1,00	1,00	91,06
RUANG TUNGGU	1	5,00	5,00	33,00	6,07	0,67	1,00	1,00	66,81
RUANG TUNGGU	2	5,00	5,00	11,00	23,18	0,85	1,00	1,00	85,01
RUANG TUNGGU	3	5,00	5,00	15,00	15,32	0,77	1,00	1,00	76,58
RUANG TUNGGU	4	5,00	5,00	28,00	7,75	0,72	1,00	1,00	72,31
RUANG TUNGGU	5	5,00	5,00	16,00	15,45	0,82	1,00	0,00	82,41

General Report (Normal Run - All Reps)

General | Locations | Location States Multi | Location States Single | Failed Arrivals | Entity Activity | Entity States

asli.MOD (Normal Run - All Reps)

Name	Replication	Total Exits	Current Qty In System	Avg Time In System (MIN)	Avg Time In Move Logic (MIN)	Avg Time Waiting (MIN)	Avg Time In Operation (MIN)	Avg Time Blocked (MIN)
Operator	1	27,00	23,00	90,43	0,00	0,00	62,57	
Operator	2	5,00	23,00	167,14	0,00	0,00	63,61	
Operator	3	9,00	23,00	45,30	0,00	0,00	30,66	
Operator	4	22,00	23,00	129,17	0,00	0,00	95,60	
Operator	5	11,00	21,00	161,53	0,00	0,00	75,85	

Rata-rata

General Report (Normal Run - Rep. 1)

General | Locations | Location States Multi | Location States Single | Failed Arrivals | Entity Activity | Entity States

asli.MOD (Normal Run - Rep. 1)

Name	Scheduled Time (HR)	Capacity	Total Entries	Avg Time Per Entry (MIN)	Avg Contents	Maximum Contents	Current Contents	% Utilization
MASUK	5,00	5,00	50,00	3,91	0,65	1,00	1,00	65,09
ANTRIAN PENDAFTARAN	5,00	999999,00	49,00	66,88	10,92	15,00	15,00	71,52
PENDAFTARAN	5,00	5,00	34,00	8,63	0,98	1,00	1,00	97,84
POLI UMUM	5,00	5,00	5,00	57,28	0,95	1,00	1,00	95,47
POLI KIA	5,00	5,00	7,00	38,93	0,91	1,00	1,00	90,83
POLI GIGI	5,00	5,00	11,00	22,29	0,82	1,00	1,00	81,73
LABORATORIUM	5,00	5,00	9,00	25,03	0,75	1,00	1,00	75,09
FARMASI dan Kasir	5,00	5,00	28,00	8,53	0,80	1,00	1,00	79,62
RUANG TUNGGU	5,00	5,00	33,00	6,07	0,67	1,00	1,00	66,81

General Report (Normal Run - Rep. 1)							
General	Locations	Location States Multi	Location States Single	Failed Arrivals	Entity Activity	Entity States	
asi.MOD (Normal Run - Rep. 1)							
Name	Total Exits	Current Qty In System	Avg Time In System (MIN)	Avg Time In Move Logic (MIN)	Avg Time Waiting (MIN)	Avg Time In Operation (MIN)	Avg Time Blocked (MIN)
Operator	27,00	23,00	90,43	0,00	0,00	62,57	27,85

Lampiran 7. Skenario 1 pada simulasi

General Report (Normal Run - All Reps)										
General	Locations	Location States Multi	Location States Single	Failed Arrivals	Entity Activity	Entity States				
asi.MOD (Normal Run - All Reps)										
Name	Replication	Scheduled Time (HR)	Capacity	Total Entries	Avg Time Per Entry (MIN)	Avg Contents	Maximum Contents	Current Contents	% Utilization	
MASUK	1	5,00	1,00	38,00	5,45	0,69	1,00	1,00	69,03	
MASUK	2	5,00	1,00	53,00	3,52	0,62	1,00	1,00	62,24	
MASUK	3	5,00	1,00	41,00	5,07	0,69	1,00	1,00	69,29	
MASUK	4	5,00	1,00	42,00	4,62	0,65	1,00	1,00	64,70	
MASUK	5	5,00	1,00	41,00	5,18	0,71	1,00	1,00	70,82	
ANTRIAN PENDAFTRAN	1	5,00	999999,00	37,00	85,52	10,55	15,00	15,00	69,06	
ANTRIAN PENDAFTRAN	2	5,00	999999,00	52,00	47,17	8,18	15,00	15,00	53,53	
ANTRIAN PENDAFTRAN	3	5,00	999999,00	40,00	73,84	9,85	15,00	15,00	64,46	
ANTRIAN PENDAFTRAN	4	5,00	999999,00	41,00	77,42	10,58	15,00	15,00	69,28	
ANTRIAN PENDAFTRAN	5	5,00	999999,00	40,00	72,19	9,62	15,00	15,00	63,02	
PENDAFTRAN	1	5,00	1,00	15,00	18,07	0,90	1,00	1,00	90,34	
PENDAFTRAN	2	5,00	1,00	30,00	8,40	0,84	1,00	1,00	84,02	
PENDAFTRAN	3	5,00	1,00	23,00	11,74	0,90	1,00	1,00	89,99	
PENDAFTRAN	4	5,00	1,00	21,00	12,76	0,89	1,00	1,00	89,35	
PENDAFTRAN	5	5,00	1,00	18,00	13,75	0,82	1,00	1,00	82,50	
POLI UMUM	1	5,00	1,00	3,00	95,83	0,96	1,00	1,00	95,83	
POLI UMUM	2	5,00	1,00	3,00	94,43	0,94	1,00	1,00	94,43	
POLI UMUM	3	5,00	1,00	4,00	69,13	0,92	1,00	1,00	92,17	
POLI UMUM	4	5,00	1,00	5,00	56,53	0,94	1,00	1,00	94,22	
POLI UMUM	5	5,00	1,00	4,00	68,27	0,91	1,00	1,00	91,02	
POLI KIA	1	5,00	1,00	5,00	54,87	0,91	1,00	1,00	91,45	
POLI KIA	2	5,00	1,00	7,00	38,26	0,89	1,00	1,00	89,28	
POLI KIA	3	5,00	1,00	4,00	69,09	0,92	1,00	1,00	92,12	
POLI KIA	4	5,00	1,00	2,00	137,24	0,91	1,00	1,00	91,49	
POLI KIA	5	5,00	1,00	4,00	65,78	0,88	1,00	1,00	87,70	
POLI GIGI	1	5,00	1,00	3,00	91,88	0,92	1,00	1,00	91,88	
POLI GIGI	2	5,00	1,00	13,00	21,04	0,91	1,00	1,00	91,19	
POLI GIGI	3	5,00	1,00	5,00	52,90	0,88	1,00	1,00	88,16	
POLI GIGI	4	5,00	1,00	9,00	29,46	0,88	1,00	1,00	88,39	
POLI GIGI	5	5,00	1,00	5,00	50,55	0,84	1,00	1,00	84,24	
LABORATORIUM	1	5,00	1,00	4,00	64,66	0,86	1,00	1,00	86,21	
LABORATORIUM	2	5,00	1,00	8,00	32,00	0,85	1,00	1,00	85,33	
LABORATORIUM	3	5,00	1,00	6,00	41,88	0,84	1,00	1,00	83,77	
LABORATORIUM	4	5,00	1,00	5,00	51,54	0,86	1,00	1,00	85,91	
LABORATORIUM	5	5,00	1,00	5,00	49,50	0,83	1,00	1,00	82,50	
FARMASI dan Kasir	1	5,00	1,00	6,00	47,73	0,95	1,00	1,00	95,47	
FARMASI dan Kasir	2	5,00	1,00	17,00	11,77	0,67	1,00	1,00	66,67	
FARMASI dan Kasir	3	5,00	1,00	11,00	25,94	0,95	1,00	1,00	95,10	
FARMASI dan Kasir	4	5,00	1,00	6,00	47,98	0,96	1,00	1,00	95,95	
FARMASI dan Kasir	5	5,00	1,00	4,00	69,60	0,93	1,00	1,00	92,80	
RUANG TUNGGU	1	5,00	1,00	20,00	12,44	0,83	1,00	1,00	82,94	
RUANG TUNGGU	2	5,00	1,00	35,00	5,46	0,64	1,00	1,00	63,75	
RUANG TUNGGU	3	5,00	1,00	23,00	9,79	0,75	1,00	1,00	75,06	
RUANG TUNGGU	4	5,00	1,00	24,00	10,48	0,84	1,00	1,00	83,82	
RUANG TUNGGU	5	5,00	1,00	23,00	9,27	0,71	1,00	1,00	71,10	
pendaftran 1	1	5,00	1,00	7,00	36,64	0,85	1,00	1,00	85,48	
pendaftran 1	2	5,00	1,00	7,00	34,99	0,82	1,00	1,00	81,64	
pendaftran 1	3	5,00	1,00	2,00	133,76	0,89	1,00	1,00	89,17	
pendaftran 1	4	5,00	1,00	5,00	57,81	0,96	1,00	1,00	96,34	
pendaftran 1	5	5,00	1,00	7,00	35,08	0,82	1,00	1,00	81,85	
POLI UMUM 1	1	5,00	1,00	4,00	64,88	0,87	1,00	1,00	86,50	
POLI UMUM 1	2	5,00	1,00	3,00	87,50	0,88	1,00	1,00	87,50	
POLI UMUM 1	3	5,00	1,00	3,00	81,17	0,81	1,00	1,00	81,17	
POLI UMUM 1	4	5,00	1,00	2,00	128,86	0,86	1,00	1,00	85,91	
POLI UMUM 1	5	5,00	1,00	4,00	61,95	0,83	1,00	1,00	82,60	
FARMASI DAN KASIR 1	1	5,00	1,00	8,00	35,55	0,95	1,00	1,00	94,81	
FARMASI DAN KASIR 1	2	5,00	1,00	12,00	21,63	0,87	1,00	1,00	86,52	
FARMASI DAN KASIR 1	3	5,00	1,00	6,00	48,31	0,97	1,00	1,00	96,61	
FARMASI DAN KASIR 1	4	5,00	1,00	12,00	21,45	0,86	1,00	1,00	85,81	
FARMASI DAN KASIR 1	5	5,00	1,00	13,00	18,74	0,81	1,00	1,00	81,21	

General Report (Normal Run - All Reps)									
General	Locations	Location States Multi	Location States Single	Failed Arrivals	Entity Activity	Entity States			
asi.MOD (Normal Run - All Reps)									
Name	Replication	Total Exits	Current Qty In System	Avg Time In System (MIN)	Avg Time In Move Logic (MIN)	Avg Time Waiting (MIN)	Avg Time In Operation (MIN)	Avg Time Blocked (MIN)	
PASIE	1	12,00	26,00	89,17	0,00	0,00	53,50		
PASIE	2	27,00	26,00	105,02	0,00	0,00	72,67		
PASIE	3	15,00	26,00	140,04	0,00	0,00	87,72		
PASIE	4	16,00	26,00	115,12	0,00	0,00	70,52		
PASIE	5	15,00	26,00	157,17	0,00	0,00	82,28		

Rata-rata

General Report (Normal Run - Rep. 1)

General | Locations | Location States Multi | Location States Single | Failed Arrivals | Entity Activity | Entity States

asi.MOD (Normal Run - Rep. 1)

Name	Scheduled Time (HR)	Capacity	Total Entries	Avg Time Per Entry (MIN)	Avg Contents	Maximum Contents	Current Contents	% Utilization
MASUK	5,00	1,00	38,00	5,45	0,69	1,00	1,00	69,03
ANTRIAN PENDAFTARAN	5,00	999999,00	37,00	85,52	10,55	15,00	15,00	69,06
PENDAFTARAN	5,00	1,00	15,00	18,07	0,90	1,00	1,00	90,34
POLI UMUM	5,00	1,00	3,00	95,83	0,96	1,00	1,00	95,83
POLI KIA	5,00	1,00	5,00	54,87	0,91	1,00	1,00	91,45
POLI GIGI	5,00	1,00	3,00	91,88	0,92	1,00	1,00	91,88
LABORATORIUM	5,00	1,00	4,00	64,66	0,86	1,00	1,00	86,21
FARMASI dan Kasir	5,00	1,00	5,00	47,73	0,95	1,00	1,00	95,47
RUANG TUNGGU	5,00	1,00	20,00	12,44	0,83	1,00	1,00	82,94
pendaftaran 1	5,00	1,00	7,00	36,64	0,85	1,00	1,00	85,48
POLI UMUM 1	5,00	1,00	4,00	64,88	0,87	1,00	1,00	86,50
FARMASI DAN KASIR 1	5,00	1,00	8,00	35,55	0,95	1,00	1,00	94,81

General Report (Normal Run - Rep. 1)

General | Locations | Location States Multi | Location States Single | Failed Arrivals | Entity Activity | Entity States

asi.MOD (Normal Run - Rep. 1)

Name	Total Exits	Current Qty In System	Avg Time In System (MIN)	Avg Time In Move Logic (MIN)	Avg Time Waiting (MIN)	Avg Time In Operation (MIN)	Avg Time Blocked (MIN)
PASIEEN	12,00	26,00	89,17	0,00	0,00	53,50	35,67

Lampiran 8. Skenario 2 pada simulasi

General Report (Normal Run - All Reps)

General | Locations | Location States Multi | Location States Single | Failed Arrivals | Entity Activity | Entity States

SK 1.MOD (Normal Run - All Reps)

Name	Replication	Scheduled Time (HR)	Capacity	Total Entries	Avg Time Per Entry (MIN)	Avg Contents	Maximum Contents	Current Contents	% Utilization
MASUK	1	5,00	1,00	51,00	3,58	0,61	1,00	1,00	60,82
MASUK	2	5,00	1,00	53,00	3,35	0,59	1,00	1,00	59,17
MASUK	3	5,00	1,00	59,00	2,89	0,57	1,00	1,00	56,88
MASUK	4	5,00	1,00	54,00	3,14	0,57	1,00	1,00	56,51
MASUK	5	5,00	1,00	43,00	4,70	0,67	1,00	1,00	67,35
ANTRIAN PENDAFTARAN	1	5,00	999999,00	50,00	46,16	7,69	15,00	15,00	50,37
ANTRIAN PENDAFTARAN	2	5,00	999999,00	52,00	34,20	5,93	15,00	15,00	38,81
ANTRIAN PENDAFTARAN	3	5,00	999999,00	58,00	35,47	6,86	15,00	14,00	44,90
ANTRIAN PENDAFTARAN	4	5,00	999999,00	53,00	33,78	5,97	15,00	15,00	39,08
ANTRIAN PENDAFTARAN	5	5,00	999999,00	42,00	73,60	10,30	15,00	15,00	67,47
PENDAFTARAN	1	5,00	1,00	23,00	10,56	0,81	1,00	1,00	80,99
PENDAFTARAN	2	5,00	1,00	28,00	8,78	0,82	1,00	1,00	81,94
PENDAFTARAN	3	5,00	1,00	23,00	11,58	0,89	1,00	1,00	88,76
PENDAFTARAN	4	5,00	1,00	25,00	8,20	0,68	1,00	1,00	68,33
PENDAFTARAN	5	5,00	1,00	15,00	18,28	0,91	1,00	1,00	91,41
POLI UMUM	1	5,00	1,00	6,00	47,92	0,96	1,00	1,00	95,83
POLI UMUM	2	5,00	1,00	5,00	55,37	0,92	1,00	1,00	92,29
POLI UMUM	3	5,00	1,00	5,00	56,64	0,94	1,00	1,00	94,40
POLI UMUM	4	5,00	1,00	5,00	56,47	0,94	1,00	1,00	94,11
POLI UMUM	5	5,00	1,00	5,00	55,68	0,93	1,00	1,00	92,81
POLI KIA	1	5,00	1,00	5,00	55,37	0,92	1,00	1,00	92,28
POLI KIA	2	5,00	1,00	2,00	133,16	0,89	1,00	1,00	88,77
POLI KIA	3	5,00	1,00	12,00	19,31	0,77	1,00	1,00	77,23
POLI KIA	4	5,00	1,00	6,00	44,82	0,90	1,00	1,00	89,64
POLI KIA	5	5,00	1,00	4,00	67,31	0,90	1,00	1,00	89,74
POLI GIGI	1	5,00	1,00	9,00	30,40	0,91	1,00	1,00	91,21
POLI GIGI	2	5,00	1,00	14,00	18,25	0,85	1,00	1,00	85,18
POLI GIGI	3	5,00	1,00	11,00	19,14	0,70	1,00	1,00	70,19
POLI GIGI	4	5,00	1,00	11,00	21,89	0,80	1,00	1,00	80,25
POLI GIGI	5	5,00	1,00	6,00	42,88	0,86	1,00	1,00	85,75
LABORATORIUM	1	5,00	1,00	3,00	84,91	0,85	1,00	1,00	84,91
LABORATORIUM	2	5,00	1,00	5,00	50,57	0,84	1,00	1,00	84,28
LABORATORIUM	3	5,00	1,00	7,00	34,01	0,79	1,00	1,00	79,36
LABORATORIUM	4	5,00	1,00	6,00	43,60	0,87	1,00	1,00	87,20
LABORATORIUM	5	5,00	1,00	3,00	83,64	0,84	1,00	1,00	83,64
FARMASI dan Kasir	1	5,00	1,00	15,00	17,04	0,85	1,00	1,00	85,21
FARMASI dan Kasir	2	5,00	1,00	15,00	15,70	0,79	1,00	1,00	78,52
FARMASI dan Kasir	3	5,00	1,00	17,00	12,50	0,71	1,00	1,00	70,81
FARMASI dan Kasir	4	5,00	1,00	9,00	29,12	0,87	1,00	1,00	87,36
FARMASI dan Kasir	5	5,00	1,00	4,00	70,57	0,94	1,00	1,00	94,09
RUANG TUNGGU	1	5,00	1,00	32,00	7,09	0,76	1,00	1,00	75,58
RUANG TUNGGU	2	5,00	1,00	34,00	5,54	0,63	1,00	1,00	62,79
RUANG TUNGGU	3	5,00	1,00	41,00	4,57	0,62	1,00	1,00	62,48
RUANG TUNGGU	4	5,00	1,00	35,00	4,55	0,53	1,00	1,00	53,06
RUANG TUNGGU	5	5,00	1,00	24,00	10,29	0,82	1,00	1,00	82,33

pendaftran 1	1	5,00	1,00	10,00	22,63	0,75	1,00	1,00	75,42
pendaftran 1	2	5,00	1,00	2,00	146,11	0,97	1,00	1,00	97,41
pendaftran 1	3	5,00	1,00	10,00	27,80	0,93	1,00	1,00	92,65
pendaftran 1	4	5,00	1,00	5,00	46,14	0,77	1,00	1,00	76,91
pendaftran 1	5	5,00	1,00	5,00	56,82	0,95	1,00	1,00	94,69
POLI UMUM 1	1	5,00	1,00	8,00	29,95	0,80	1,00	1,00	79,86
POLI UMUM 1	2	5,00	1,00	7,00	32,67	0,76	1,00	1,00	76,22
POLI UMUM 1	3	5,00	1,00	5,00	43,51	0,73	1,00	1,00	72,52
POLI UMUM 1	4	5,00	1,00	6,00	34,49	0,69	1,00	1,00	68,98
POLI UMUM 1	5	5,00	1,00	5,00	49,95	0,83	1,00	1,00	83,25
FARMASI DAN KASIR 1	1	5,00	1,00	5,00	56,88	0,95	1,00	1,00	94,81
FARMASI DAN KASIR 1	2	5,00	1,00	8,00	25,74	0,69	1,00	1,00	68,63
FARMASI DAN KASIR 1	3	5,00	1,00	8,00	22,39	0,60	1,00	1,00	59,72
FARMASI DAN KASIR 1	4	5,00	1,00	10,00	22,14	0,74	1,00	1,00	73,80
FARMASI DAN KASIR 1	5	5,00	1,00	7,00	38,46	0,90	1,00	1,00	89,74

PENDAFTARAN 2	1	5,00	1,00	2,00	109,86	0,73	1,00	1,00	73,24
PENDAFTARAN 2	2	5,00	1,00	7,00	41,20	0,96	1,00	1,00	96,12
PENDAFTARAN 2	3	5,00	1,00	11,00	23,72	0,87	1,00	1,00	86,96
PENDAFTARAN 2	4	5,00	1,00	8,00	22,26	0,59	1,00	1,00	59,37
PENDAFTARAN 2	5	5,00	1,00	7,00	37,89	0,88	1,00	1,00	88,42
KASIR DAN FARMASI 2	1	5,00	1,00	6,00	43,52	0,87	1,00	1,00	87,03
KASIR DAN FARMASI 2	2	5,00	1,00	5,00	44,89	0,75	1,00	1,00	74,82
KASIR DAN FARMASI 2	3	5,00	1,00	10,00	19,48	0,65	1,00	1,00	64,93
KASIR DAN FARMASI 2	4	5,00	1,00	10,00	19,66	0,66	1,00	1,00	65,54
KASIR DAN FARMASI 2	5	5,00	1,00	7,00	36,41	0,85	1,00	1,00	84,96

General Report (Normal Run - All Repts)

General Locations Location States Multi Location States Single Failed Arrivals Entity Activity Entity States

SK 1.MOD (Normal Run - All Repts)

Name	Replication	Total Exits	Current Qty In System	Avg Time In System (MIN)	Avg Time In Move Logic (MIN)	Avg Time Waiting (MIN)	Avg Time In Operation (MIN)	Avg Time Blocked (MIN)
PASIEEN	1	23,00	28,00	82,90	0,00	0,00	54,97	
PASIEEN	2	25,00	28,00	42,82	0,00	0,00	36,41	
PASIEEN	3	32,00	27,00	74,03	0,00	0,00	53,29	
PASIEEN	4	26,00	28,00	62,53	0,00	0,00	43,80	
PASIEEN	5	15,00	28,00	159,33	0,00	0,00	100,02	

Rata-rata

General Report (Normal Run - Rep. 1)

General Locations Location States Multi Location States Single Failed Arrivals Entity Activity Entity States

SK 1.MOD (Normal Run - Rep. 1)

Name	Scheduled Time (HR)	Capacity	Total Entries	Avg Time Per Entry (MIN)	Avg Contents	Maximum Contents	Current Contents	% Utilization
MASUK	5,00	1,00	51,00	3,58	0,61	1,00	1,00	60,82
ANTRIAN PENDAFTARAN	5,00	999999,00	50,00	46,16	7,69	15,00	15,00	50,37
PENDAFTARAN	5,00	1,00	23,00	10,56	0,81	1,00	1,00	80,99
POLI UMUM	5,00	1,00	6,00	47,92	0,96	1,00	1,00	95,83
POLI KIA	5,00	1,00	5,00	55,37	0,92	1,00	1,00	92,28
POLI GIGI	5,00	1,00	9,00	30,40	0,91	1,00	1,00	91,21
LABORATORIUM	5,00	1,00	3,00	84,91	0,85	1,00	1,00	84,91
FARMASI dan Kasir	5,00	1,00	15,00	17,04	0,85	1,00	1,00	85,21
RUANG TUNGGU	5,00	1,00	32,00	7,09	0,76	1,00	1,00	75,58
pendaftran 1	5,00	1,00	10,00	22,63	0,75	1,00	1,00	75,42
POLI UMUM 1	5,00	1,00	8,00	29,95	0,80	1,00	1,00	79,86
FARMASI DAN KASIR 1	5,00	1,00	5,00	56,88	0,95	1,00	1,00	94,81
PENDAFTARAN 2	5,00	1,00	2,00	109,86	0,73	1,00	1,00	73,24
KASIR DAN FARMASI 2	5,00	1,00	6,00	43,52	0,87	1,00	1,00	87,03

General Report (Normal Run - Rep. 1)

General Locations Location States Multi Location States Single Failed Arrivals Entity Activity Entity States

SK 1.MOD (Normal Run - Rep. 1)

Name	Total Exits	Current Qty In System	Avg Time In System (MIN)	Avg Time In Move Logic (MIN)	Avg Time Waiting (MIN)	Avg Time In Operation (MIN)	Avg Time Blocked (MIN)
PASIEEN	23,00	28,00	82,90	0,00	0,00	54,97	27,93

Lampiran 9. Skenario 3 pada simulasi

General Report (Normal Run - All Reps)										
SK 3.mod (Normal Run - All Reps)										
Name	Replication	Scheduled Time (HR)	Capacity	Total Entries	Avg Time Per Entry (MIN)	Avg Contents	Maximum Contents	Current Contents	% Utilization	
Masuk	1	5,00	1,00	33,00	4,64	0,51	1,00	1,00	51,09	
Masuk	2	5,00	1,00	35,00	3,92	0,46	1,00	1,00	45,89	
Masuk	3	5,00	1,00	41,00	3,26	0,45	1,00	1,00	44,52	
Masuk	4	5,00	1,00	39,00	3,07	0,40	1,00	1,00	39,88	
Masuk	5	5,00	1,00	28,00	6,26	0,58	1,00	1,00	58,43	
antrian pendaftaran	1	5,00	999999,00	32,00	27,22	2,90	4,00	4,00	60,73	
antrian pendaftaran	2	5,00	999999,00	34,00	23,82	2,70	4,00	4,00	56,48	
antrian pendaftaran	3	5,00	999999,00	40,00	20,54	2,74	4,00	4,00	57,30	
antrian pendaftaran	4	5,00	999999,00	38,00	18,98	2,40	4,00	4,00	50,30	
antrian pendaftaran	5	5,00	999999,00	27,00	33,06	2,98	4,00	4,00	62,25	
pendaftaran	1	5,00	1,00	17,00	14,47	0,82	1,00	1,00	82,02	
pendaftaran	2	5,00	1,00	16,00	16,36	0,87	1,00	1,00	87,27	
pendaftaran	3	5,00	1,00	21,00	12,85	0,90	1,00	1,00	89,93	
pendaftaran	4	5,00	1,00	23,00	10,03	0,77	1,00	1,00	76,92	
pendaftaran	5	5,00	1,00	14,00	19,35	0,90	1,00	1,00	90,28	
pendaftaran 2	1	5,00	1,00	11,00	22,20	0,81	1,00	1,00	81,41	
pendaftaran 2	2	5,00	1,00	14,00	17,42	0,81	1,00	1,00	81,27	
pendaftaran 2	3	5,00	1,00	15,00	17,38	0,87	1,00	1,00	86,90	
pendaftaran 2	4	5,00	1,00	11,00	19,95	0,73	1,00	1,00	73,17	
pendaftaran 2	5	5,00	1,00	9,00	27,55	0,83	1,00	1,00	82,85	
ruang tunggu	1	5,00	1,00	26,00	8,57	0,74	1,00	1,00	74,29	
ruang tunggu	2	5,00	1,00	28,00	8,03	0,75	1,00	1,00	74,98	
ruang tunggu	3	5,00	1,00	34,00	6,96	0,79	1,00	1,00	78,87	
ruang tunggu	4	5,00	1,00	32,00	6,05	0,65	1,00	1,00	64,56	
ruang tunggu	5	5,00	1,00	21,00	11,29	0,79	1,00	1,00	79,00	
poli umum	1	5,00	1,00	5,00	57,14	0,95	1,00	1,00	95,23	
poli umum	2	5,00	1,00	6,00	49,07	0,98	1,00	1,00	98,14	
poli umum	3	5,00	1,00	2,00	149,82	1,00	1,00	1,00	99,88	
poli umum	4	5,00	1,00	6,00	46,08	0,92	1,00	1,00	92,17	
poli umum	5	5,00	1,00	5,00	57,48	0,96	1,00	1,00	95,80	
poli umum 1	1	5,00	1,00	3,00	86,48	0,86	1,00	1,00	86,48	
poli umum 1	2	5,00	1,00	2,00	143,67	0,96	1,00	1,00	95,78	
poli umum 1	3	5,00	1,00	7,00	39,07	0,91	1,00	1,00	91,17	
poli umum 1	4	5,00	1,00	6,00	45,09	0,90	1,00	1,00	90,17	
poli umum 1	5	5,00	1,00	2,00	145,43	0,97	1,00	1,00	96,96	
poli umum 2	1	5,00	1,00	5,00	50,53	0,84	1,00	1,00	84,22	
poli umum 2	2	5,00	1,00	6,00	42,93	0,86	1,00	1,00	85,86	
poli umum 2	3	5,00	1,00	5,00	54,29	0,90	1,00	1,00	90,49	
poli umum 2	4	5,00	1,00	4,00	67,49	0,90	1,00	1,00	89,99	
poli umum 2	5	5,00	1,00	2,00	140,99	0,94	1,00	1,00	94,00	
poli kia	1	5,00	1,00	6,00	39,17	0,78	1,00	1,00	78,35	
poli kia	2	5,00	1,00	5,00	49,25	0,82	1,00	1,00	82,08	
poli kia	3	5,00	1,00	6,00	45,22	0,90	1,00	1,00	90,44	
poli kia	4	5,00	1,00	4,00	63,58	0,85	1,00	1,00	84,78	
poli kia	5	5,00	1,00	4,00	65,94	0,88	1,00	1,00	87,92	
poli gigi	1	5,00	1,00	4,00	58,30	0,78	1,00	1,00	77,73	
poli gigi	2	5,00	1,00	5,00	48,75	0,81	1,00	1,00	81,26	
poli gigi	3	5,00	1,00	9,00	28,47	0,85	1,00	1,00	85,42	
poli gigi	4	5,00	1,00	4,00	62,43	0,83	1,00	1,00	83,24	
poli gigi	5	5,00	1,00	4,00	68,79	0,92	1,00	1,00	91,72	
laboratorium	1	5,00	1,00	2,00	113,16	0,75	1,00	1,00	75,44	
laboratorium	2	5,00	1,00	3,00	78,48	0,78	1,00	1,00	78,48	
laboratorium	3	5,00	1,00	4,00	62,44	0,83	1,00	1,00	83,25	
laboratorium	4	5,00	1,00	7,00	31,36	0,73	1,00	1,00	73,18	
laboratorium	5	5,00	1,00	3,00	82,70	0,83	1,00	1,00	82,70	
kasir dan farmasi	1	5,00	1,00	10,00	28,31	0,94	1,00	1,00	94,36	
kasir dan farmasi	2	5,00	1,00	9,00	30,52	0,92	1,00	1,00	91,55	
kasir dan farmasi	3	5,00	1,00	10,00	28,97	0,97	1,00	1,00	96,57	
kasir dan farmasi	4	5,00	1,00	14,00	18,22	0,85	1,00	1,00	85,05	
kasir dan farmasi	5	5,00	1,00	5,00	54,80	0,91	1,00	1,00	91,33	
kasir dan farmasi 1	1	5,00	1,00	9,00	27,47	0,82	1,00	1,00	82,42	
kasir dan farmasi 1	2	5,00	1,00	12,00	21,80	0,86	1,00	1,00	86,39	
kasir dan farmasi 1	3	5,00	1,00	17,00	16,10	0,91	1,00	1,00	91,21	
kasir dan farmasi 1	4	5,00	1,00	11,00	21,25	0,78	1,00	1,00	77,93	
kasir dan farmasi 1	5	5,00	1,00	9,00	29,88	0,90	1,00	1,00	89,65	

Rata-rata

General Report (Normal Run - Rep. 1)									
SK 3.mod (Normal Run - Rep. 1)									
Name	Scheduled Time (HR)	Capacity	Total Entries	Avg Time Per Entry (MIN)	Avg Contents	Maximum Contents	Current Contents	% Utilization	
Masuk	5,00	1,00	33,00	4,64	0,51	1,00	1,00	51,09	
antrian pendaftaran	5,00	999999,00	32,00	27,22	2,90	4,00	4,00	60,73	
pendaftaran	5,00	1,00	17,00	14,47	0,82	1,00	1,00	82,02	
pendaftaran 2	5,00	1,00	11,00	22,20	0,81	1,00	1,00	81,41	
ruang tunggu	5,00	1,00	26,00	8,57	0,74	1,00	1,00	74,29	
poli umum	5,00	1,00	5,00	57,14	0,95	1,00	1,00	95,23	
poli umum 1	5,00	1,00	3,00	86,48	0,86	1,00	1,00	86,48	
poli umum 2	5,00	1,00	5,00	50,53	0,84	1,00	1,00	84,22	
poli kia	5,00	1,00	6,00	39,17	0,78	1,00	1,00	78,35	
poli gigi	5,00	1,00	4,00	58,30	0,78	1,00	1,00	77,73	
laboratorium	5,00	1,00	2,00	113,16	0,75	1,00	1,00	75,44	
kasir dan farmasi	5,00	1,00	10,00	28,31	0,94	1,00	1,00	94,36	
kasir dan farmasi 1	5,00	1,00	9,00	27,47	0,82	1,00	1,00	82,42	

General Report (Normal Run - Rep. 1)							
SK 3.mod (Normal Run - Rep. 1)							
Name	Total Exits	Current Qty In System	Avg Time In System (MIN)	Avg Time In Move Logic (MIN)	Avg Time Waiting (MIN)	Avg Time In Operation (MIN)	Avg Time Blocked (MIN)
pasien	17,00	16,00	77,93	0,00	0,00	41,17	36,76

Lampiran 10. Skenario 4 pada simulasi

General Report (Normal Run - All Reps)									
SK 4.mod (Normal Run - All Reps)									
Name	Replication	Scheduled Time (HR)	Capacity	Total Entries	Avg Time Per Entry (MIN)	Avg Contents	Maximum Conte		
MASUK	1	5,00	1,00	34,00	4,67	0,53			
MASUK	2	5,00	1,00	36,00	3,93	0,47			
MASUK	3	5,00	1,00	37,00	4,81	0,59			
MASUK	4	5,00	1,00	33,00	4,59	0,50			
MASUK	5	5,00	1,00	29,00	5,77	0,56			
ANTRIAN PENDAFTARAN	1	5,00	999999,00	33,00	22,36	2,46			
ANTRIAN PENDAFTARAN	2	5,00	999999,00	35,00	18,63	2,17			
ANTRIAN PENDAFTARAN	3	5,00	999999,00	36,00	21,37	2,56			
ANTRIAN PENDAFTARAN	4	5,00	999999,00	32,00	20,43	2,18			
ANTRIAN PENDAFTARAN	5	5,00	999999,00	28,00	24,86	2,32			
PENDAFTARAN	1	5,00	1,00	11,00	24,15	0,89			
PENDAFTARAN	2	5,00	1,00	7,00	41,58	0,97			
PENDAFTARAN	3	5,00	1,00	12,00	24,87	0,99			
PENDAFTARAN	4	5,00	1,00	10,00	28,17	0,94			
PENDAFTARAN	5	5,00	1,00	10,00	29,19	0,97			
PENDAFTARAN 1	1	5,00	1,00	10,00	26,30	0,88			
PENDAFTARAN 1	2	5,00	1,00	15,00	17,43	0,87			
PENDAFTARAN 1	3	5,00	1,00	8,00	37,34	1,00			
PENDAFTARAN 1	4	5,00	1,00	8,00	35,04	0,93			
PENDAFTARAN 1	5	5,00	1,00	7,00	41,52	0,97			
PENDAFFTRAN 2	1	5,00	1,00	9,00	29,24	0,88			
PENDAFFTRAN 2	2	5,00	1,00	10,00	25,58	0,85			
PENDAFFTRAN 2	3	5,00	1,00	13,00	21,86	0,95			
PENDAFFTRAN 2	4	5,00	1,00	11,00	24,10	0,88			
PENDAFFTRAN 2	5	5,00	1,00	8,00	35,03	0,93			
KURSI TUNGGU	1	5,00	1,00	27,00	0,53	0,05			
KURSI TUNGGU	2	5,00	1,00	29,00	6,36	0,61			
KURSI TUNGGU	3	5,00	1,00	30,00	2,18	0,22			
KURSI TUNGGU	4	5,00	1,00	26,00	3,80	0,33			
KURSI TUNGGU	5	5,00	1,00	22,00	7,94	0,58			

POLI UMUM	1	5,00	1,00	7,00	37,30	0,87
POLI UMUM	2	5,00	1,00	8,00	30,22	0,81
POLI UMUM	3	5,00	1,00	7,00	40,20	0,94
POLI UMUM	4	5,00	1,00	7,00	35,02	0,82
POLI UMUM	5	5,00	1,00	3,00	96,20	0,96
POLI UMUM 1	1	5,00	1,00	7,00	19,12	0,45
POLI UMUM 1	2	5,00	1,00	2,00	131,10	0,87
POLI UMUM 1	3	5,00	1,00	4,00	71,60	0,95
POLI UMUM 1	4	5,00	1,00	3,00	85,27	0,85
POLI UMUM 1	5	5,00	1,00	4,00	70,61	0,94
POLI UMUM 2	1	5,00	1,00	6,00	18,60	0,37
POLI UMUM 2	2	5,00	1,00	4,00	62,52	0,83
POLI UMUM 2	3	5,00	1,00	4,00	48,47	0,65
POLI UMUM 2	4	5,00	1,00	4,00	45,96	0,61
POLI UMUM 2	5	5,00	1,00	2,00	109,88	0,73
POLI UMUM 3	1	5,00	1,00	2,00	49,97	0,33
POLI UMUM 3	2	5,00	1,00	3,00	75,93	0,76
POLI UMUM 3	3	5,00	1,00	3,00	88,72	0,89
POLI UMUM 3	4	5,00	1,00	2,00	91,84	0,61
POLI UMUM 3	5	5,00	1,00	1,00	212,77	0,71
POLI KIA	1	5,00	1,00	2,00	32,87	0,22
POLI KIA	2	5,00	1,00	4,00	53,83	0,72
POLI KIA	3	5,00	1,00	6,00	30,55	0,61
POLI KIA	4	5,00	1,00	1,00	155,82	0,52
POLI KIA	5	5,00	1,00	3,00	63,82	0,64
POLI GIGI	1	5,00	1,00	1,00	52,14	0,17
POLI GIGI	2	5,00	1,00	4,00	50,45	0,67
POLI GIGI	3	5,00	1,00	3,00	49,19	0,49
POLI GIGI	4	5,00	1,00	5,00	30,98	0,52
POLI GIGI	5	5,00	1,00	4,00	43,74	0,58
LAB	1	5,00	1,00	1,00	27,30	0,09
LAB	2	5,00	1,00	3,00	75,38	0,75
LAB	3	5,00	1,00	3,00	52,94	0,53
LAB	4	5,00	1,00	3,00	47,09	0,47
LAB	5	5,00	1,00	4,00	43,72	0,58
FARMASI DAN KASIR	1	5,00	1,00	12,00	21,32	0,85
FARMASI DAN KASIR	2	5,00	1,00	8,00	31,11	0,83
FARMASI DAN KASIR	3	5,00	1,00	17,00	15,35	0,87
FARMASI DAN KASIR	4	5,00	1,00	12,00	23,30	0,93
FARMASI DAN KASIR	5	5,00	1,00	8,00	25,24	0,67
FARMASI DAN KASIR 1	1	5,00	1,00	7,00	28,84	0,67
FARMASI DAN KASIR 1	2	5,00	1,00	13,00	19,10	0,83
FARMASI DAN KASIR 1	3	5,00	1,00	7,00	32,51	0,76
FARMASI DAN KASIR 1	4	5,00	1,00	6,00	37,29	0,75
FARMASI DAN KASIR 1	5	5,00	1,00	6,00	29,84	0,60

General Report (Normal Run - All Reps)							
General	Locations	Location States Multi	Location States Single	Failed Arrivals	Entity Activity	Entity States	
SK 4.mod (Normal Run - All Reps)							
Name	Replication	Total Exits	Current Qty In System	Avg Time In System (MIN)	Avg Time In Move Logic (MIN)	Avg Time Waiting (MIN)	
PASIEN	1	17,00	17,00	70,90	0,00	0,00	
PASIEN	2	19,00	17,00	89,28	0,00	0,00	
PASIEN	3	22,00	15,00	111,07	0,00	0,00	
PASIEN	4	16,00	17,00	91,05	0,00	0,00	
PASIEN	5	12,00	17,00	130,14	0,00	0,00	

Rata-rata

General Report (Normal Run - Rep. 1)

General | Locations | Location States Multi | Location States Single | Failed Arrivals | Entity Activity | Entity States

SK 4.mod (Normal Run - Rep. 1)

Name	Scheduled Time (HR)	Capacity	Total Entries	Avg Time Per Entry (MIN)	Avg Contents	Maximum Contents	Current Contents	% Utilization
MASUK	5,00	1,00	34,00	4,67	0,53	1,00	1,00	52,93
ANTRIAN PENDAFTARAN	5,00	999999,00	33,00	22,36	2,46	3,00	3,00	62,65
PENDAFTARAN	5,00	1,00	11,00	24,15	0,89	1,00	1,00	88,57
PENDAFTARAN 1	5,00	1,00	10,00	26,30	0,88	1,00	1,00	87,66
PENDAFTARAN 2	5,00	1,00	9,00	29,24	0,88	1,00	1,00	87,72
KURSI TUNGGU	5,00	1,00	27,00	0,53	0,05	1,00	1,00	4,80
POLI UMUM	5,00	1,00	7,00	37,30	0,87	1,00	1,00	87,03
POLI UMUM 1	5,00	1,00	7,00	19,12	0,45	1,00	1,00	44,61
POLI UMUM 2	5,00	1,00	6,00	18,60	0,37	1,00	1,00	37,19
POLI UMUM 3	5,00	1,00	2,00	49,97	0,33	1,00	1,00	33,31
POLI KIA	5,00	1,00	2,00	32,87	0,22	1,00	1,00	21,91
POLI GIGI	5,00	1,00	1,00	52,14	0,17	1,00	1,00	17,38
LAB	5,00	1,00	1,00	27,30	0,09	1,00	1,00	9,10
FARMASI DAN KASIR	5,00	1,00	12,00	21,32	0,85	1,00	1,00	85,30
FARMASI DAN KASIR 1	5,00	1,00	7,00	28,84	0,67	1,00	1,00	67,29

General Report (Normal Run - Rep. 1)

General | Locations | Location States Multi | Location States Single | Failed Arrivals | Entity Activity | Entity States

SK 4.mod (Normal Run - Rep. 1)

Name	Total Exits	Current Qty In System	Avg Time In System (MIN)	Avg Time In Move Logic (MIN)	Avg Time Waiting (MIN)	Avg Time In C
PASIEAN	17,00	17,00	70,90	0,00	0,00	

Lampiran 11. Skenario 5 pada simulasi

General Report (Normal Run - All Reps)

General | Locations | Location States Multi | Location States Single | Failed Arrivals | Entity Activity | Entity States

SK 3.MOD (Normal Run - All Reps)

Name	Replication	Scheduled Time (HR)	Capacity	Total Entries	Avg Time Per Entry (MIN)	Avg Contents	Maximum Contents	Current Contents	% Utilization
Masuk	1	5,00	1,00	42,00	2,73	0,38	1,00	1,00	38,26
Masuk	2	5,00	1,00	40,00	3,28	0,44	1,00	1,00	43,79
Masuk	3	5,00	1,00	38,00	3,74	0,47	1,00	0,00	47,36
Masuk	4	5,00	1,00	37,00	4,92	0,61	1,00	1,00	60,64
Masuk	5	5,00	1,00	38,00	3,28	0,42	1,00	1,00	41,54
antrian pendaftaran	1	5,00	999999,00	41,00	21,09	2,88	4,00	4,00	60,29
antrian pendaftaran	2	5,00	999999,00	39,00	22,36	2,91	4,00	4,00	60,82
antrian pendaftaran	3	5,00	999999,00	38,00	24,20	3,07	4,00	3,00	64,12
antrian pendaftaran	4	5,00	999999,00	36,00	26,51	3,18	4,00	4,00	66,54
antrian pendaftaran	5	5,00	999999,00	37,00	24,59	3,03	4,00	4,00	63,45
pendaftaran	1	5,00	1,00	14,00	18,58	0,87	1,00	1,00	86,71
pendaftaran	2	5,00	1,00	12,00	23,59	0,94	1,00	1,00	94,36
pendaftaran	3	5,00	1,00	9,00	33,19	1,00	1,00	1,00	99,56
pendaftaran	4	5,00	1,00	9,00	32,42	0,97	1,00	1,00	97,26
pendaftaran	5	5,00	1,00	8,00	35,83	0,96	1,00	1,00	95,54
pendaftaran 2	1	5,00	1,00	14,00	18,76	0,88	1,00	1,00	87,53
pendaftaran 2	2	5,00	1,00	15,00	18,25	0,91	1,00	1,00	91,24
pendaftaran 2	3	5,00	1,00	17,00	16,85	0,95	1,00	1,00	95,48
pendaftaran 2	4	5,00	1,00	12,00	22,58	0,90	1,00	1,00	90,34
pendaftaran 2	5	5,00	1,00	16,00	17,33	0,92	1,00	1,00	92,43
pendaftaran 3	1	5,00	1,00	9,00	29,21	0,88	1,00	1,00	87,63
pendaftaran 3	2	5,00	1,00	8,00	32,20	0,86	1,00	1,00	85,87
pendaftaran 3	3	5,00	1,00	9,00	31,56	0,95	1,00	1,00	94,68
pendaftaran 3	4	5,00	1,00	11,00	23,36	0,86	1,00	1,00	85,66
pendaftaran 3	5	5,00	1,00	9,00	30,13	0,90	1,00	1,00	90,39
KURSI TUNGGU	1	5,00	1,00	34,00	1,45	0,16	1,00	1,00	16,45
KURSI TUNGGU	2	5,00	1,00	32,00	3,35	0,36	1,00	1,00	35,73
KURSI TUNGGU	3	5,00	1,00	32,00	4,13	0,44	1,00	1,00	44,04
KURSI TUNGGU	4	5,00	1,00	29,00	0,44	0,04	1,00	0,00	4,24
KURSI TUNGGU	5	5,00	1,00	30,00	1,31	0,13	1,00	0,00	13,07

POLI UMUM	1	5,00	1,00	9,00	27,72	0,83	1,00	1,00	83,15
POLI UMUM	2	5,00	1,00	6,00	38,90	0,78	1,00	1,00	77,81
POLI UMUM	3	5,00	1,00	4,00	71,13	0,95	1,00	1,00	94,84
POLI UMUM	4	5,00	1,00	3,00	81,16	0,81	1,00	1,00	81,16
POLI UMUM	5	5,00	1,00	4,00	62,00	0,83	1,00	0,00	82,67
POLI UMUM 2	1	5,00	1,00	8,00	25,70	0,69	1,00	1,00	68,55
POLI UMUM 2	2	5,00	1,00	5,00	54,22	0,90	1,00	1,00	90,37
POLI UMUM 2	3	5,00	1,00	5,00	51,25	0,85	1,00	1,00	85,41
POLI UMUM 2	4	5,00	1,00	5,00	45,61	0,76	1,00	1,00	76,01
POLI UMUM 2	5	5,00	1,00	7,00	38,91	0,91	1,00	1,00	90,78
POLI UMUM 3	1	5,00	1,00	5,00	36,80	0,61	1,00	1,00	61,33
POLI UMUM 3	2	5,00	1,00	4,00	56,85	0,76	1,00	1,00	75,79
POLI UMUM 3	3	5,00	1,00	3,00	75,49	0,75	1,00	1,00	75,49
POLI UMUM 3	4	5,00	1,00	2,00	105,43	0,70	1,00	1,00	70,29
POLI UMUM 3	5	5,00	1,00	2,00	138,71	0,92	1,00	1,00	92,47
POLI KIA	1	5,00	1,00	4,00	36,14	0,48	1,00	1,00	48,18
POLI KIA	2	5,00	1,00	7,00	32,50	0,76	1,00	1,00	75,83
POLI KIA	3	5,00	1,00	9,00	20,07	0,60	1,00	1,00	60,22
POLI KIA	4	5,00	1,00	8,00	27,87	0,74	1,00	1,00	74,33
POLI KIA	5	5,00	1,00	4,00	54,62	0,73	1,00	1,00	72,82
POLI GIGI	1	5,00	1,00	6,00	19,00	0,38	1,00	1,00	38,01
POLI GIGI	2	5,00	1,00	6,00	24,20	0,48	1,00	1,00	48,41
POLI GIGI	3	5,00	1,00	6,00	31,84	0,64	1,00	1,00	63,69
POLI GIGI	4	5,00	1,00	9,00	11,33	0,34	1,00	1,00	34,00
POLI GIGI	5	5,00	1,00	9,00	21,45	0,64	1,00	0,00	64,36
LABORATORIM	1	5,00	1,00	1,00	216,14	0,72	1,00	1,00	72,05
LABORATORIM	2	5,00	1,00	3,00	39,57	0,40	1,00	1,00	39,57
LABORATORIM	3	5,00	1,00	4,00	37,05	0,49	1,00	1,00	49,40
LABORATORIM	4	5,00	1,00	2,00	25,52	0,17	1,00	0,00	17,01
LABORATORIM	5	5,00	1,00	4,00	36,50	0,49	1,00	1,00	48,66
FARMASI DAN KASIR	1	5,00	1,00	8,00	35,38	0,94	1,00	1,00	94,36
FARMASI DAN KASIR	2	5,00	1,00	8,00	34,76	0,93	1,00	1,00	92,69
FARMASI DAN KASIR	3	5,00	1,00	8,00	27,80	0,74	1,00	1,00	74,14
FARMASI DAN KASIR	4	5,00	1,00	8,00	26,82	0,72	1,00	0,00	71,51
FARMASI DAN KASIR	5	5,00	1,00	12,00	16,79	0,67	1,00	1,00	67,18
FARMASI DAN KASIR 2	1	5,00	1,00	14,00	13,09	0,61	1,00	1,00	61,11
FARMASI DAN KASIR 2	2	5,00	1,00	10,00	19,10	0,64	1,00	1,00	63,66
FARMASI DAN KASIR 2	3	5,00	1,00	12,00	15,32	0,64	1,00	1,00	63,69
FARMASI DAN KASIR 2	4	5,00	1,00	10,00	17,85	0,60	1,00	0,00	59,51
FARMASI DAN KASIR 2	5	5,00	1,00	5,00	36,16	0,60	1,00	1,00	60,26
FARMASI DAN KASIR 3	1	5,00	1,00	5,00	28,42	0,47	1,00	1,00	47,36
FARMASI DAN KASIR 3	2	5,00	1,00	7,00	23,47	0,55	1,00	1,00	54,76
FARMASI DAN KASIR 3	3	5,00	1,00	5,00	36,74	0,61	1,00	1,00	61,23
FARMASI DAN KASIR 3	4	5,00	1,00	6,00	12,43	0,25	1,00	0,00	24,85
FARMASI DAN KASIR 3	5	5,00	1,00	9,00	15,00	0,45	1,00	0,00	44,99

General Report (Normal Run - All Reps)

General Locations Location States Multi Location States Single Failed Arrivals Entity Activity Entity States

SK 3.MDD (Normal Run - All Reps)

Name	Replication	Total Exits	Current Qty In System	Avg Time In System (MIN)	Avg Time In Move Logic (MIN)	Avg Time Waiting (MIN)	Avg Time In Operation (MIN)	Avg Time Blocked (MIN)
pasien	1	18,00	18,00	81,74	3,00	0,00	56,73	
pasien	2	20,00	10,00	106,80	3,00	0,00	89,38	
pasien	3	35,00	14,00	66,28	3,00	0,00	54,64	
pasien	4	18,00	18,00	73,47	3,00	0,00	63,91	
pasien	5	19,00	15,00	108,05	3,00	0,00	73,45	

Rata-rata

General Report (Normal Run - Rep. 1)

General Locations Location States Multi Location States Single Failed Arrivals Entity Activity Entity States

SK 3.MDD (Normal Run - Rep. 1)

Name	Scheduled Time (HR)	Capacity	Total Entries	Avg Time Per Entry (MIN)	Avg Contents	Maximum Contents	Current Contents	% Utilization
Masuk	5,00	1,00	42,00	2,73	0,38	1,00	1,00	38,26
antrian pendaltran	5,00	999993,00	41,00	21,09	2,88	4,00	4,00	60,29
pendaltran	5,00	1,00	14,00	18,58	0,87	1,00	1,00	86,71
pendaltran 2	5,00	1,00	14,00	18,76	0,88	1,00	1,00	87,53
pendaltran 3	5,00	1,00	9,00	29,21	0,88	1,00	1,00	87,63
KURSI TUNGGU	5,00	1,00	34,00	1,45	0,16	1,00	1,00	16,45
POLI UMUM	5,00	1,00	9,00	27,72	0,83	1,00	1,00	83,15
POLI UMUM 2	5,00	1,00	8,00	25,70	0,69	1,00	1,00	68,55
POLI UMUM 3	5,00	1,00	5,00	36,80	0,61	1,00	1,00	61,33
POLI KIA	5,00	1,00	4,00	36,14	0,48	1,00	1,00	48,18
POLI GIGI	5,00	1,00	6,00	19,00	0,38	1,00	1,00	38,01
LABORATORIM	5,00	1,00	1,00	216,14	0,72	1,00	1,00	72,05
FARMASI DAN KASIR	5,00	1,00	8,00	35,38	0,94	1,00	1,00	94,36
FARMASI DAN KASIR 2	5,00	1,00	14,00	13,09	0,61	1,00	1,00	61,11
FARMASI DAN KASIR 3	5,00	1,00	5,00	28,42	0,47	1,00	1,00	47,36

General Report (Normal Run - Rep. 1)

General Locations Location States Multi Location States Single Failed Arrivals Entity Activity Entity States

SK 3.MDD (Normal Run - Rep. 1)

Name	Total Exits	Current Qty In System	Avg Time In System (MIN)	Avg Time In Move Logic (MIN)	Avg Time Waiting (MIN)	Avg Time In Operation (MIN)	Avg Time Blocked (MIN)
pasien	24,00	18,00	74,32	0,00	0,00	62,29	12,63



Universitas
Esa Unggul

Universitas
Esa Unggul

Universitas
Esa U

Universitas
Esa Unggul

Universitas
Esa Unggul

Universitas
Esa U

Universitas
Esa Unggul

Universitas
Esa Unggul

Universitas
Esa U