

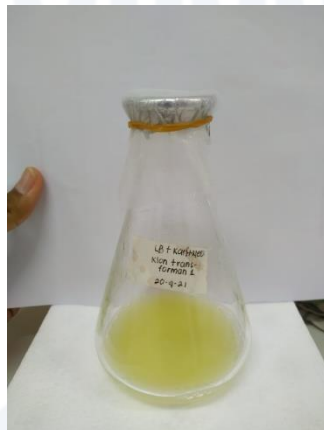
## LAMPIRAN

$$\text{Efisiensi Transformasi} = \frac{36 \times 1 \times \frac{1000 \text{ uL}}{100 \text{ uL}}}{0,6} = 6 \times 10^3$$

### Lampiran 1. Penghitungan Efisiensi Transformasi



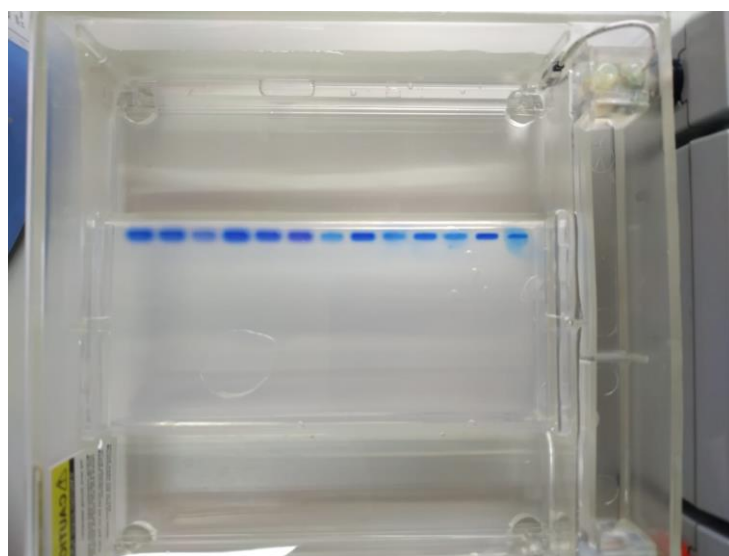
### Lampiran 2. Kultur *A. tumefaciens*



### Lampiran 3. Kultur Transforman pada Media LB cair



**Lampiran 4. Proses Isolasi Plasmid**



**Lampiran 5. Proses Elektroforesis**