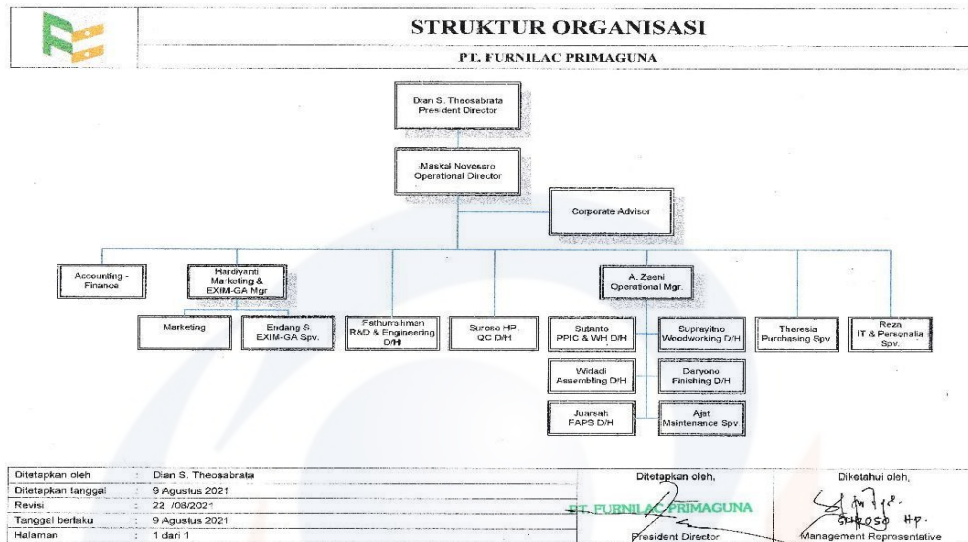
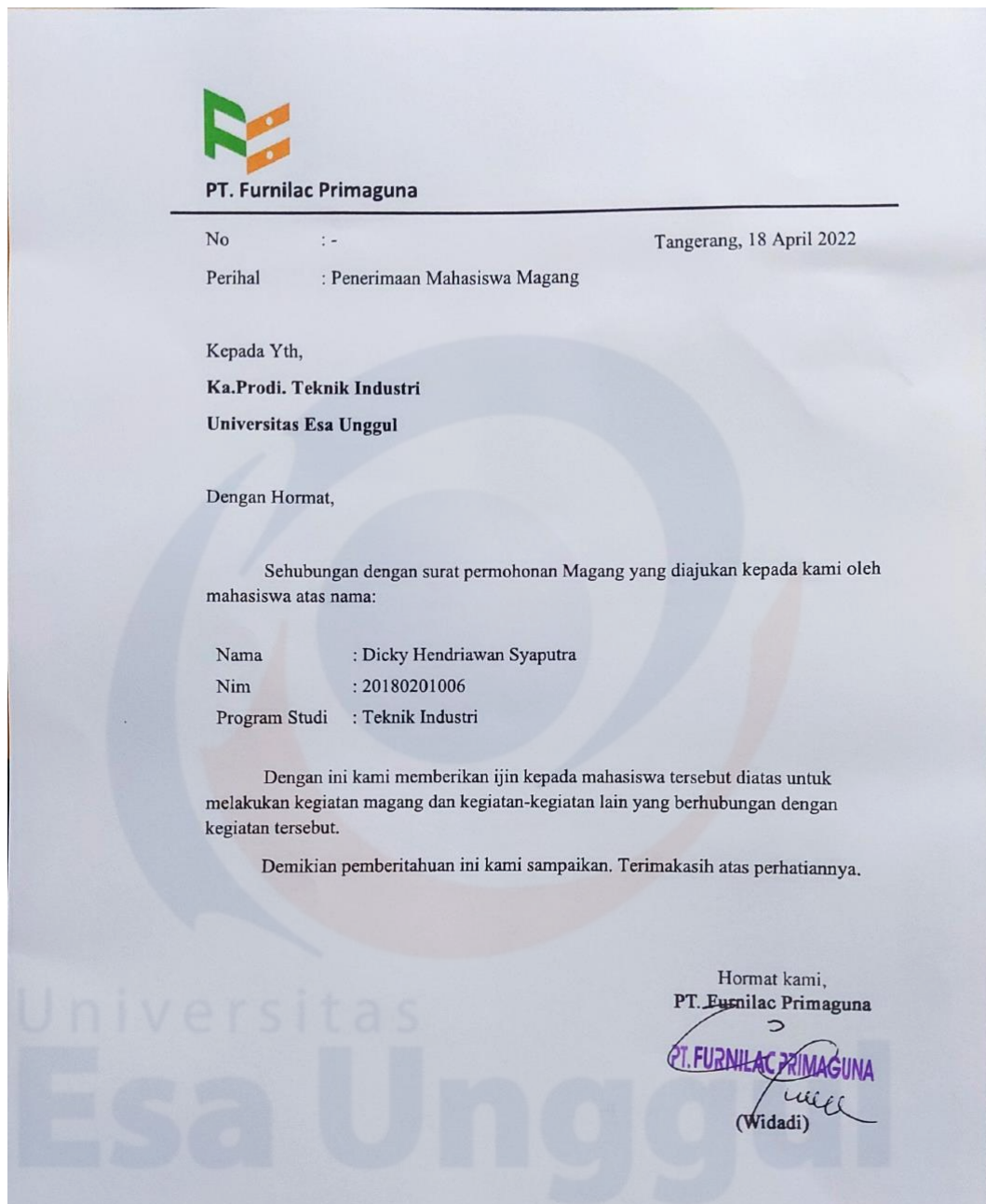


LAMPIRAN

Lampiran 1 Struktur Organisasi PT. Furnilac Primaguna



Lampiran 2 Lembar Keterangan Perusahaan



Lampiran 3 Pengolahan Data Peramalan Menggunakan Ms. Excel

a. *Regresi Linier*

| PERIODE (t) | PERMINTAAN Y(t) | t*Y(t) | t^2 | PERAMALAN Y'(t) | ERROR | Abs. E | E^2 | Abs.E / Y(t) |
|-------------|-----------------|--------|-----|-----------------|-------|--------|--------|--------------|
| 1 | 6110 | 6110 | 1 | 6208 | -98 | 98 | 9524 | 0,0 |
| 2 | 6210 | 12420 | 4 | 6397 | -187 | 187 | 35110 | 0,0 |
| 3 | 6530 | 19590 | 9 | 6587 | -57 | 57 | 3268 | 0,0 |
| 4 | 6832 | 27328 | 16 | 6777 | 55 | 55 | 3031 | 0,0 |
| 5 | 6920 | 34600 | 25 | 6967 | -47 | 47 | 2184 | 0,0 |
| 6 | 7320 | 43920 | 36 | 7157 | 163 | 163 | 26725 | 0,0 |
| 7 | 7672 | 53704 | 49 | 7346 | 326 | 326 | 106074 | 0,0 |
| 8 | 7720 | 61760 | 64 | 7536 | 184 | 184 | 33820 | 0,0 |
| 9 | 7816 | 70344 | 81 | 7726 | 90 | 90 | 8121 | 0,0 |
| 10 | 7855 | 78550 | 100 | 7916 | -61 | 61 | 3681 | 0,0 |
| 11 | 7960 | 87560 | 121 | 8105 | -145 | 145 | 21158 | 0,0 |
| 12 | 8072 | 96864 | 144 | 8295 | -223 | 223 | 49838 | 0,0 |
| 78 | 87017 | 592750 | 650 | 87017 | 0 | 1636 | 302532 | 0,2 |

b. *Regresi Kuadratis*

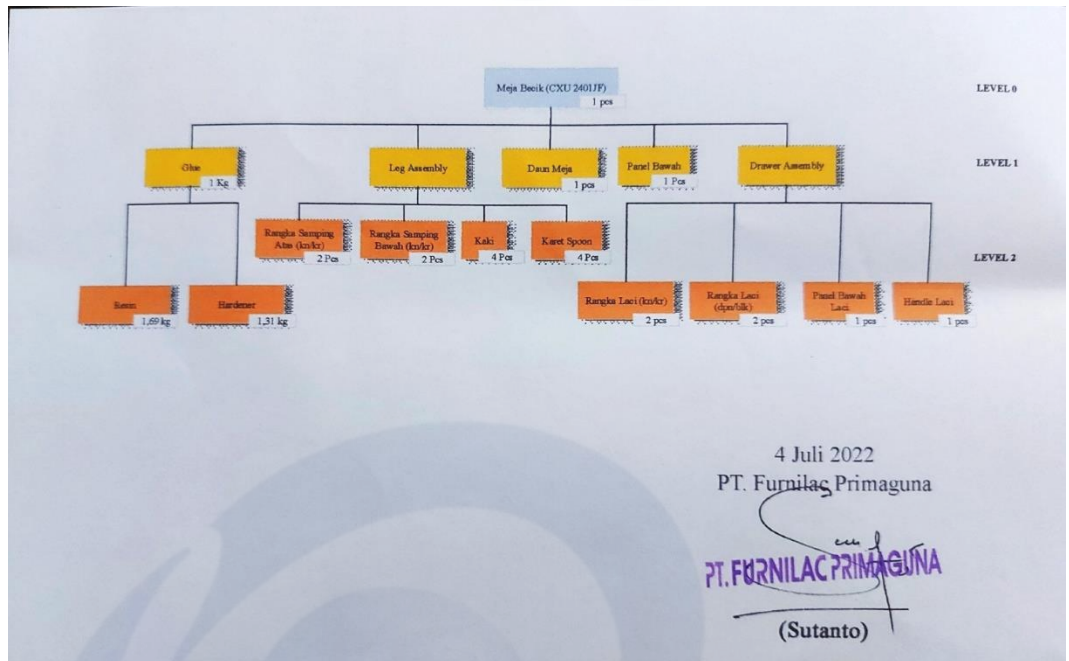
| PERIODE (t) | PERMINTAAN Y(t) | t^2 | t^3 | t^4 | t*Y(t) | t^2*Y(t) | PERAMALAN Y'(t) | ERROR | Abs. E | E^2 | Abs.E / Y(t) |
|-------------|-----------------|-----|------|-------|--------|----------|-----------------|-------|--------|-------|--------------|
| 1 | 6110 | 1 | 1 | 1 | 6110 | 6110 | 5980 | 130 | 130 | 16835 | 0,0 |
| 2 | 6210 | 4 | 8 | 16 | 12420 | 24840 | 6294 | -84 | 84 | 7063 | 0,0 |
| 3 | 6530 | 9 | 27 | 81 | 19590 | 58770 | 6583 | -53 | 53 | 2812 | 0,0 |
| 4 | 6832 | 16 | 64 | 256 | 27328 | 109312 | 6847 | -15 | 15 | 232 | 0,0 |
| 5 | 6920 | 25 | 125 | 625 | 34600 | 173000 | 7087 | -167 | 167 | 27758 | 0,0 |
| 6 | 7320 | 36 | 216 | 1296 | 43920 | 263520 | 7301 | 19 | 19 | 354 | 0,0 |
| 7 | 7672 | 49 | 343 | 2401 | 53704 | 375928 | 7491 | 181 | 181 | 32768 | 0,0 |
| 8 | 7720 | 64 | 512 | 4096 | 61760 | 494080 | 7656 | 64 | 64 | 4100 | 0,0 |
| 9 | 7816 | 81 | 729 | 6561 | 70344 | 633096 | 7796 | 20 | 20 | 394 | 0,0 |
| 10 | 7855 | 100 | 1000 | 10000 | 78550 | 785500 | 7912 | -57 | 57 | 3196 | 0,0 |
| 11 | 7960 | 121 | 1331 | 14641 | 87560 | 963160 | 8002 | -42 | 42 | 1774 | 0,0 |
| 12 | 8072 | 144 | 1728 | 20736 | 96864 | 1162368 | 8068 | 4 | 4 | 17 | 0,0 |
| 78 | 87017 | 650 | 6084 | 60710 | 592750 | 5049684 | 87017 | 0 | 835 | 97302 | 0,1 |

c. *Double Exponential Smoothing (α = 0,3)*

| PERIODE (t) | PERMINTAAN Y(t) | S't | S''t | S't-S''t | a | b | PERAMALAN Y'(t) | ERROR | Abs. E | E^2 | Abs.E / Y(t) |
|-------------|-----------------|-------|-------|----------|-------|------|-----------------|-------|--------|--------|--------------|
| 1 | 6110 | 6110 | 6110 | 0 | 6110 | 0 | 6110 | 0 | 0 | 0 | 0,0 |
| 2 | 6210 | 6140 | 6119 | 21 | 6161 | 9 | 6110 | 100 | 100 | 10000 | 0,0 |
| 3 | 6530 | 6257 | 6160 | 97 | 6354 | 41 | 6170 | 360 | 360 | 129600 | 0,1 |
| 4 | 6832 | 6430 | 6241 | 188 | 6618 | 81 | 6395 | 437 | 437 | 190969 | 0,1 |
| 5 | 6920 | 6577 | 6342 | 235 | 6812 | 101 | 6699 | 221 | 221 | 49018 | 0,0 |
| 6 | 7320 | 6800 | 6479 | 321 | 7120 | 137 | 6912 | 408 | 408 | 166325 | 0,1 |
| 7 | 7672 | 7061 | 6654 | 408 | 7469 | 175 | 7258 | 414 | 414 | 171790 | 0,1 |
| 8 | 7720 | 7259 | 6835 | 424 | 7683 | 182 | 7644 | 76 | 76 | 5841 | 0,0 |
| 9 | 7816 | 7426 | 7013 | 413 | 7840 | 177 | 7864 | -48 | 48 | 2313 | 0,0 |
| 10 | 7855 | 7555 | 7175 | 380 | 7934 | 163 | 8017 | -162 | 162 | 26172 | 0,0 |
| 11 | 7960 | 7676 | 7326 | 351 | 8027 | 150 | 8097 | -137 | 137 | 18749 | 0,0 |
| 12 | 8072 | 7795 | 7466 | 329 | 8124 | 141 | 8177 | -105 | 105 | 11114 | 0,0 |
| 78 | 87017 | 83085 | 79920 | 3165 | 86250 | 1356 | 85452 | 1565 | 2469 | 781892 | 0,3 |

Lampiran 4 Pengumpulan Data

a. *Data Bill Of Material (BOM) Plywood*



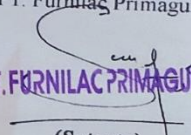
b. Komponen Kebutuhan Bahan Baku

| No | Bahan Baku | Satuan | Level | Komposisi | Lead Time (Bulan) | On Hand | Sumber |
|----|------------------------------|--------|-------|-----------|-------------------|---------|----------|
| 1 | Meja Becik (CXU 2401JF) | Pcs | 0 | 1 | 1 | 9.050 | Produksi |
| 2 | Glue | Kg | 1 | 3 | 1 | 6.200 | Produksi |
| 3 | Daun Meja | Pcs | 1 | 1 | 1 | 3.200 | Produksi |
| 4 | Panel Bawah | Pcs | 1 | 1 | 1 | 3.250 | Produksi |
| 5 | Resin | Kg | 2 | 1,69 | 1 | 8.750 | Beli |
| 6 | Hardener | Kg | 2 | 1,31 | 1 | 7.500 | Beli |
| 7 | Rangka Samping Atas (kn/kr) | Pcs | 2 | 2 | 2 | 4.200 | Produksi |
| 8 | Rangka Samping Bawah (kn/kr) | Pcs | 2 | 2 | 2 | 2.200 | Produksi |
| 9 | Kaki | Pcs | 2 | 4 | 2 | 6.110 | Produksi |
| 10 | Karet Spoon | Pcs | 2 | 4 | 1 | 6.000 | Beli |
| 11 | Rangka Laci (kn/kr) | Pcs | 2 | 2 | 1 | 3.200 | Produksi |
| 12 | Rangka Laci (dgn/blk) | Pcs | 2 | 2 | 1 | 3.100 | Produksi |
| 13 | Panel Bawah Laci | Pcs | 2 | 1 | 1 | 4.050 | Produksi |
| 14 | Handle Laci | Pcs | 2 | 1 | 1 | 7.020 | Beli |

4 Juli 2022
PT. Furnilac Primaguna
Sutanto
PT. FURNILAC PRIMAGUNA
(Sutanto)

c. Biaya Material

| No | Material | Harga (Rp) | Biaya (Rp) | | | Sumber |
|--|------------------------------|------------|------------|---------------|--------|----------|
| | | | Pesan | Pesanan 1 Thn | Simpan | |
| 1 | Meja Becik (CXU 2401JF) | 416.260 | - | - | 4.163 | Produksi |
| 2 | Glue | 237.037 | - | - | 2.370 | Produksi |
| 3 | Daun Meja | 135.020 | - | - | 1.350 | Produksi |
| 4 | Panel Bawah | 95.000 | - | - | 950 | Produksi |
| 5 | Resin | 77.500 | 2.325 | 27.900 | 775 | Beli |
| 6 | Hardener | 92.800 | 2.784 | 33.408 | 928 | Beli |
| 7 | Rangka Samping Atas (kn/kr) | 95.250 | - | - | 953 | Produksi |
| 8 | Rangka Samping Bawah (kn/kr) | 95.250 | - | - | 953 | Produksi |
| 9 | Kaki | 75.000 | - | - | 750 | Produksi |
| 10 | Karet Spoon | 32.200 | 966 | 11.592 | 322 | Beli |
| 11 | Rangka Laci (kn/kr) | 66.200 | - | - | 662 | Produksi |
| 12 | Rangka Laci (dpn/blk) | 66.200 | - | - | 662 | Produksi |
| 13 | Panel Bawah Laci | 75.500 | - | - | 755 | Produksi |
| 14 | Handle Laci | 98.667 | 2.960 | 35.520 | 987 | Beli |
| Biaya Pesan : 2,5 % dari harga material untuk biaya 1 kali pemesanan | | | | | | |
| Biaya Simpan : 1% dari harga material | | | | | | |

4 Juli 2022
PT. Furnilas Primaguna

PT. FURNILAS PRIMAGUNA
(Sutanto)