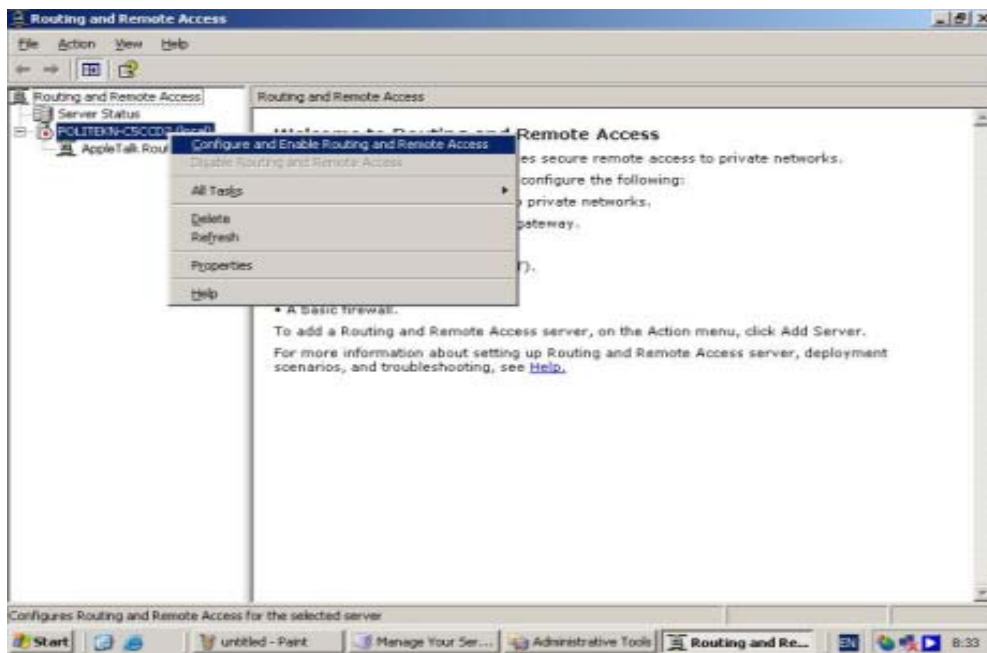
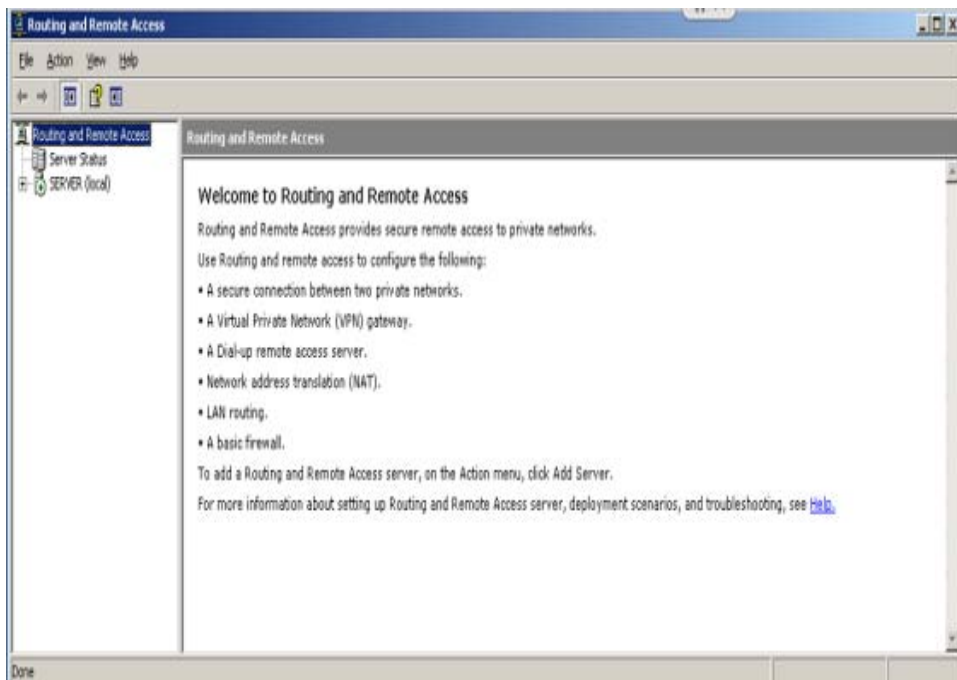
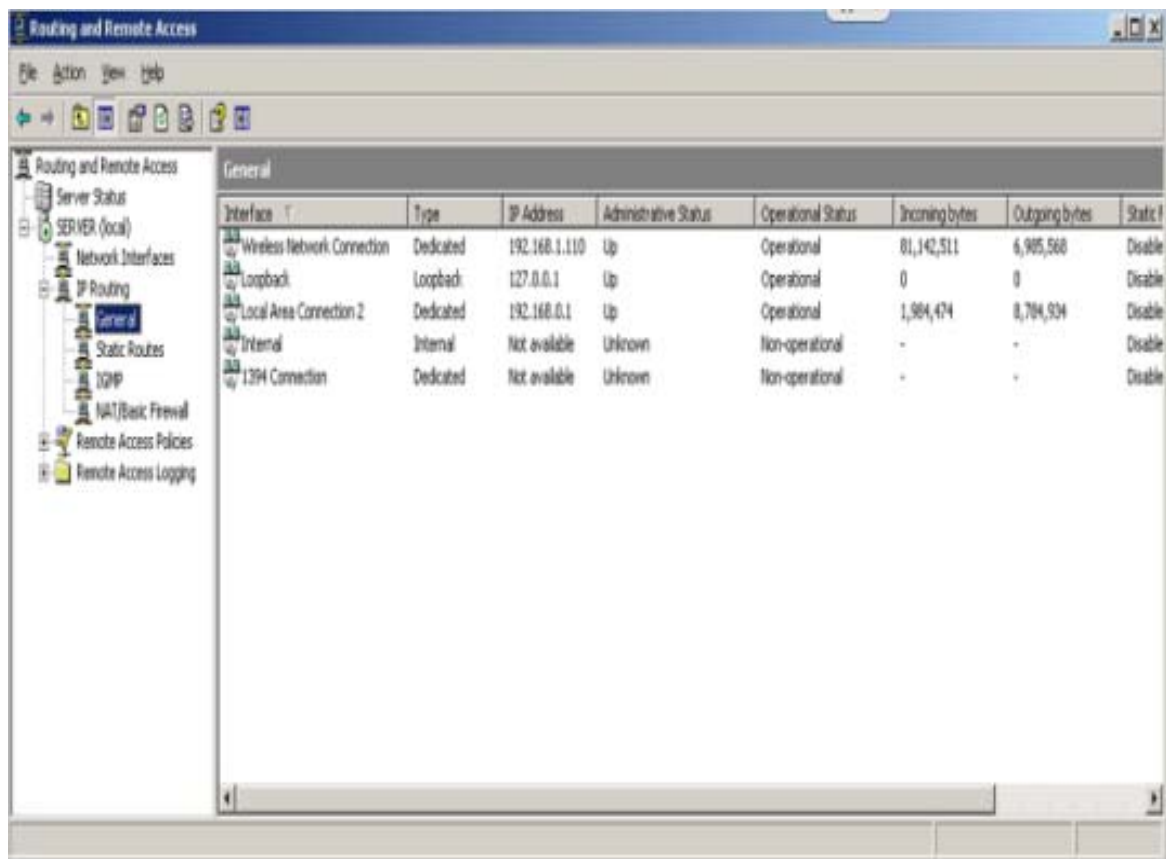
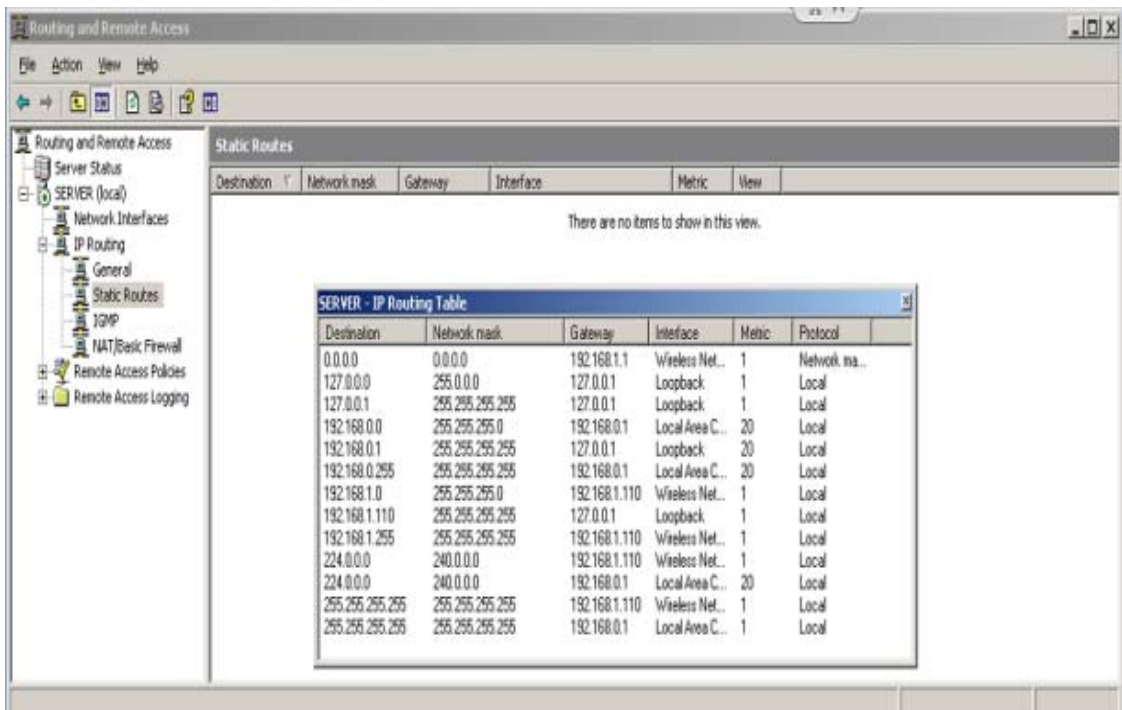
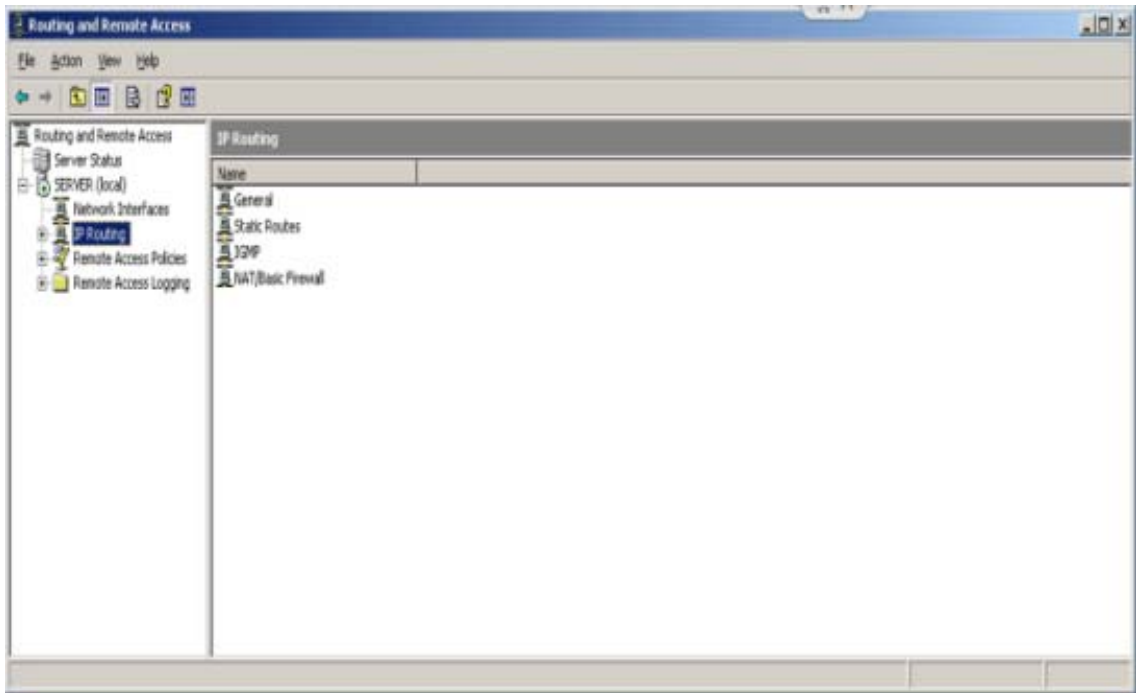


LAMPIRAN

1. Instalasi Routing dan Remote Access Server







Routing and Remote Access

File Action View Help

Routing and Remote Access
 Server Status
 SERVER (local)
 Network Interfaces
 IP Routing
 General
 Static Routes

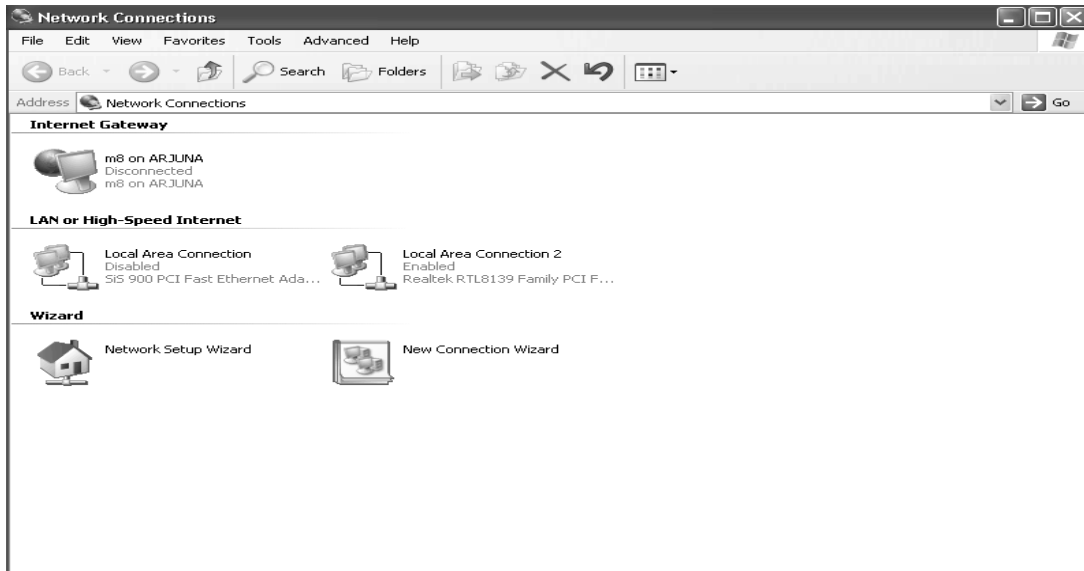
NAT/Basic Firewall

	Total mappings	Inbound packets translated	Inbound packets rejected	Outbound packets translated	Outbound packets rejected
Connection	185	2,951	0	2,118	0

SERVER - Network Address Translation Session Mapping Table

Protocol	Direction	Private address	Private port	Public Address	Public Port	Remote Address	Remote Port	Idle time
UDP	Outbound	192.168.1.110	1,035	192.168.1.110	1,035	8.8.8.8	53	44
UDP	Outbound	192.168.1.110	1,293	192.168.1.110	1,293	8.8.8.8	53	44
UDP	Outbound	192.168.1.110	1,294	192.168.1.110	1,294	8.8.8.8	53	40
UDP	Outbound	192.168.1.110	1,356	192.168.1.110	1,356	8.8.8.8	53	43
UDP	Outbound	192.168.1.110	1,357	192.168.1.110	1,357	8.8.8.8	53	44
UDP	Outbound	192.168.1.110	1,359	192.168.1.110	1,359	8.8.8.8	53	44
UDP	Outbound	192.168.1.110	1,358	192.168.1.110	1,358	8.8.8.8	53	37
UDP	Outbound	192.168.1.110	1,331	192.168.1.110	1,331	8.8.8.8	53	40
TCP	Outbound	192.168.1.110	1,201	192.168.1.110	1,201	193.33.186.223	5,938	50
TCP	Outbound	192.168.1.110	1,295	192.168.1.110	1,295	74.125.236.82	80	41
TCP	Outbound	192.168.1.110	1,296	192.168.1.110	1,296	74.125.236.95	80	28
TCP	Outbound	192.168.1.110	1,298	192.168.1.110	1,298	74.125.236.88	80	48

2. Konfigurasi TCP/IP pada Windows XP



3. Koneksi internet

```
Command Prompt
C:\Documents and Settings\Administrator>ping 192.168.1.110

Pinging 192.168.1.110 with 32 bytes of data:

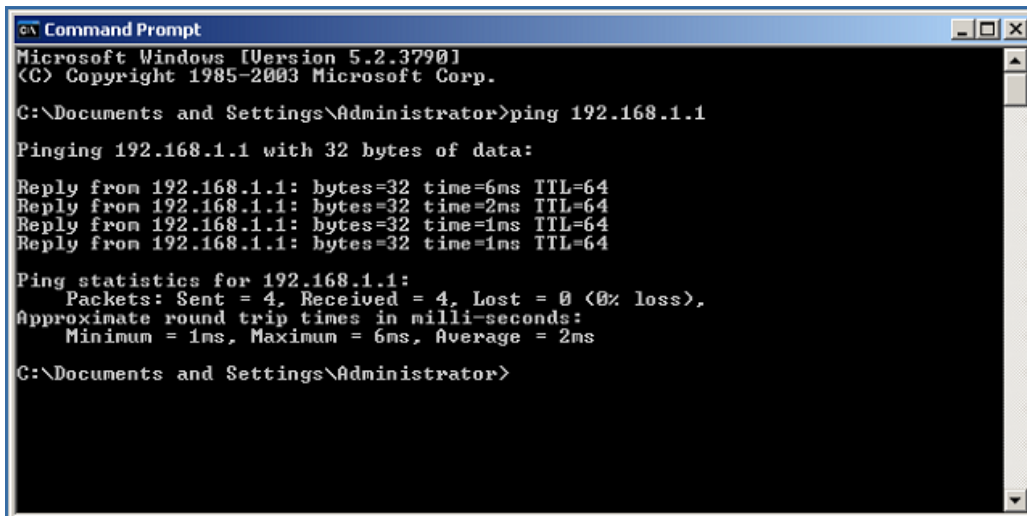
Reply from 192.168.1.110: bytes=32 time<1ms TTL=128
Reply from 192.168.1.110: bytes=32 time<1ms TTL=128
Reply from 192.168.1.110: bytes=32 time<1ms TTL=128
Reply from 192.168.1.110: bytes=32 time<1ms TTL=128

Ping statistics for 192.168.1.110:
    Packets: Sent = 4, Received = 4, Lost = 0 (0% loss),
    Approximate round trip times in milli-seconds:
        Minimum = 0ms, Maximum = 0ms, Average = 0ms

C:\Documents and Settings\Administrator>
```

Koneksi ke *Internet Server*

4. Koneksi 192.168.1.1



```
CA Command Prompt
Microsoft Windows [Version 5.2.3790]
(C) Copyright 1985-2003 Microsoft Corp.

C:\Documents and Settings\Administrator>ping 192.168.1.1

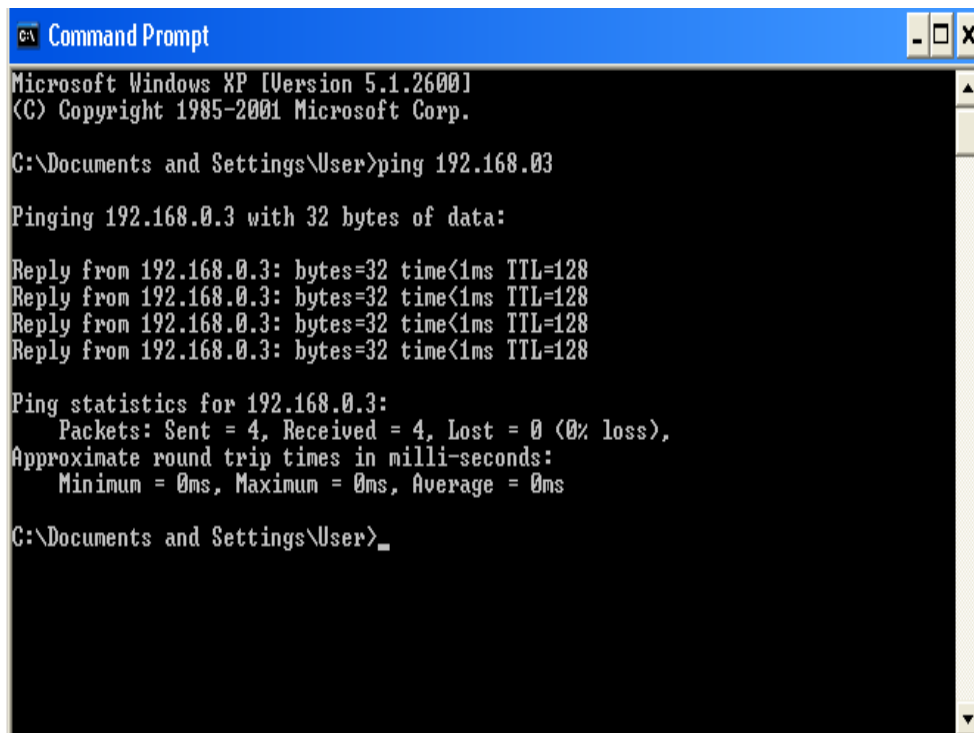
Pinging 192.168.1.1 with 32 bytes of data:

Reply from 192.168.1.1: bytes=32 time=6ms TTL=64
Reply from 192.168.1.1: bytes=32 time=2ms TTL=64
Reply from 192.168.1.1: bytes=32 time=1ms TTL=64
Reply from 192.168.1.1: bytes=32 time=1ms TTL=64

Ping statistics for 192.168.1.1:
    Packets: Sent = 4, Received = 4, Lost = 0 (0% loss),
    Approximate round trip times in milli-seconds:
        Minimum = 1ms, Maximum = 6ms, Average = 2ms

C:\Documents and Settings\Administrator>
```

5. Koneksi 192.168.0.3



```
CA Command Prompt
Microsoft Windows XP [Version 5.1.2600]
(C) Copyright 1985-2001 Microsoft Corp.

C:\Documents and Settings\User>ping 192.168.0.3

Pinging 192.168.0.3 with 32 bytes of data:

Reply from 192.168.0.3: bytes=32 time<1ms TTL=128
Reply from 192.168.0.3: bytes=32 time<1ms TTL=128
Reply from 192.168.0.3: bytes=32 time<1ms TTL=128
Reply from 192.168.0.3: bytes=32 time<1ms TTL=128

Ping statistics for 192.168.0.3:
    Packets: Sent = 4, Received = 4, Lost = 0 (0% loss),
    Approximate round trip times in milli-seconds:
        Minimum = 0ms, Maximum = 0ms, Average = 0ms

C:\Documents and Settings\User>_
```