

LAMPIRAN

KUISIONER PENELITIAN

I. Data Responden

Nama :
 Jenis Kelamin :
 Umur :
 Masa Kerja :
 Riwayat Penyakit :

II. Petunjuk Pengisian

- Jawablah setiap pertanyaan dibawah ini dengan memberikan tanda check list () pada satu alternatif jawabanyang disediakan.
- Isilah jawaban yang menurut anda paling benar.
- Jawaban tidak boleh lebih dari satu.

| Pertanyaan | Selalu | Sering | Jarang | Tidak Pernah |
|--|--------|--------|--------|--------------|
| 1. Pada saat bekerja mata anda sering mengalami keluhan tertentu | | | | |
| 2. Warna mata anda tidak seperti biasanya bila sudah lama bekerja. | | | | |
| 3. Mata anda dalam kondisi baik dan tidak merasa letih dalam bekerja. | | | | |
| 4. Anda sering keluar cairan dari mata anda pada saat bekerja. | | | | |
| 5. Terasa ada gangguan atau tidak nyaman pada mata anda. | | | | |
| 6. Mata anda dalam kondisi baik dan dingin pada saat bekerja. | | | | |
| 7. Terasa lelah pada mata anda, pada saat bekerja | | | | |
| 8. Pada saat bekerja, anda merasa seperti ada benda yang masuk kedalam tubuh anda. | | | | |
| 9. Anda suka sekali menyentuh mata anda dengan tangan pada saat bekerja | | | | |
| 10. Anda sering melihat keatas dan kesamping ketika sedang bekerja. | | | | |
| 11. Pada saat bekerja, anda sering merasa berat pada kepala anda. | | | | |
| 12. Anda jarang memegang leher anda pada saat bekerja. | | | | |

Sumber : Kuisisioner berdasarkan skripsi dari Tita Nopiyantri yang berjudul Perbedaan Keluhan Kelelahan Mata Akibat Tingkat Pencahayaan pada Para Penjahit di pasar Curug Tangerang, 2010

Lampiran II

OUTPUT STATISTIK

One-Sample Kolmogorov-Smirnov Test

| | | Keluhan Kelelahan Mata | Intensitas Pencahayaannya |
|----------------------------------|----------------|---------------------------|------------------------------|
| N | | 40 | 40 |
| Normal Parameters ^{a,b} | Mean | 40,3500 | 132,4750 |
| | Std. Deviation | 6,02367 | 29,94096 |
| Most Extreme Differences | Absolute | ,145 | ,174 |
| | Positive | ,102 | ,174 |
| | Negative | -,145 | -,137 |
| Kolmogorov-Smirnov Z | | ,917 | 1,098 |
| Asymp. Sig. (2-tailed) | | ,370 | ,179 |

a. Test distribution is Normal.

b. Calculated from data.

Statistics

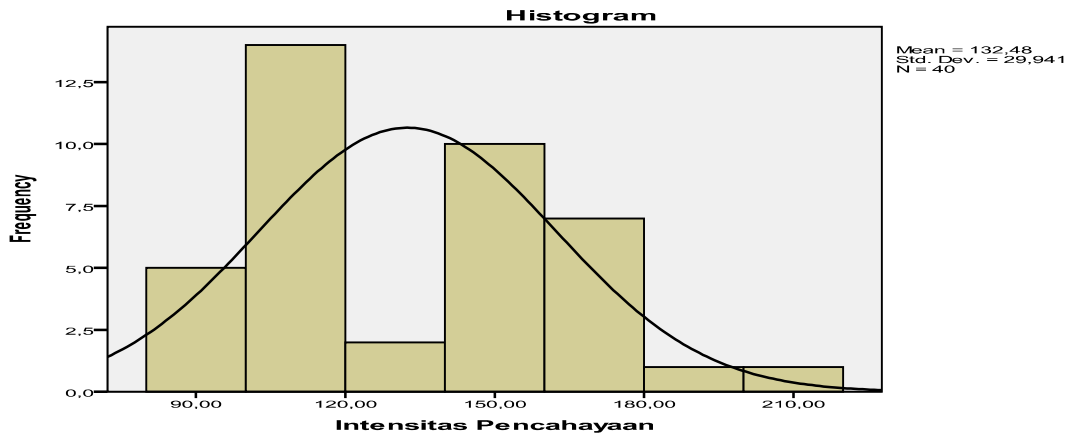
Intensitas Pencahayaannya

| | | |
|----------------|---------|----------|
| N | Valid | 40 |
| | Missing | 0 |
| Mean | | 132,4750 |
| Median | | 128,5000 |
| Mode | | 160,00 |
| Std. Deviation | | 29,94096 |
| Minimum | | 88,00 |
| Maximum | | 205,00 |
| Sum | | 5299,00 |

Intensitas Pencahayaannya

| | | Frequency | Percent | Valid Percent | Cumulative Percent |
|-------|-------|-----------|---------|---------------|-----------------------|
| Valid | 88,00 | 1 | 2,5 | 2,5 | 2,5 |
| | 95,00 | 1 | 2,5 | 2,5 | 5,0 |
| | 96,00 | 1 | 2,5 | 2,5 | 7,5 |
| | 98,00 | 1 | 2,5 | 2,5 | 10,0 |

| | | | | |
|--------|----|-------|-------|-------|
| 99,00 | 1 | 2,5 | 2,5 | 12,5 |
| 100,00 | 3 | 7,5 | 7,5 | 20,0 |
| 102,00 | 1 | 2,5 | 2,5 | 22,5 |
| 106,00 | 1 | 2,5 | 2,5 | 25,0 |
| 107,00 | 1 | 2,5 | 2,5 | 27,5 |
| 108,00 | 2 | 5,0 | 5,0 | 32,5 |
| 109,00 | 1 | 2,5 | 2,5 | 35,0 |
| 110,00 | 2 | 5,0 | 5,0 | 40,0 |
| 116,00 | 1 | 2,5 | 2,5 | 42,5 |
| 118,00 | 1 | 2,5 | 2,5 | 45,0 |
| 119,00 | 1 | 2,5 | 2,5 | 47,5 |
| 122,00 | 1 | 2,5 | 2,5 | 50,0 |
| 135,00 | 1 | 2,5 | 2,5 | 52,5 |
| 145,00 | 1 | 2,5 | 2,5 | 55,0 |
| 146,00 | 1 | 2,5 | 2,5 | 57,5 |
| 148,00 | 1 | 2,5 | 2,5 | 60,0 |
| 150,00 | 2 | 5,0 | 5,0 | 65,0 |
| 151,00 | 1 | 2,5 | 2,5 | 67,5 |
| 154,00 | 1 | 2,5 | 2,5 | 70,0 |
| 155,00 | 2 | 5,0 | 5,0 | 75,0 |
| 158,00 | 1 | 2,5 | 2,5 | 77,5 |
| 160,00 | 4 | 10,0 | 10,0 | 87,5 |
| 168,00 | 1 | 2,5 | 2,5 | 90,0 |
| 170,00 | 1 | 2,5 | 2,5 | 92,5 |
| 178,00 | 1 | 2,5 | 2,5 | 95,0 |
| 180,00 | 1 | 2,5 | 2,5 | 97,5 |
| 205,00 | 1 | 2,5 | 2,5 | 100,0 |
| Total | 40 | 100,0 | 100,0 | |



Statistics

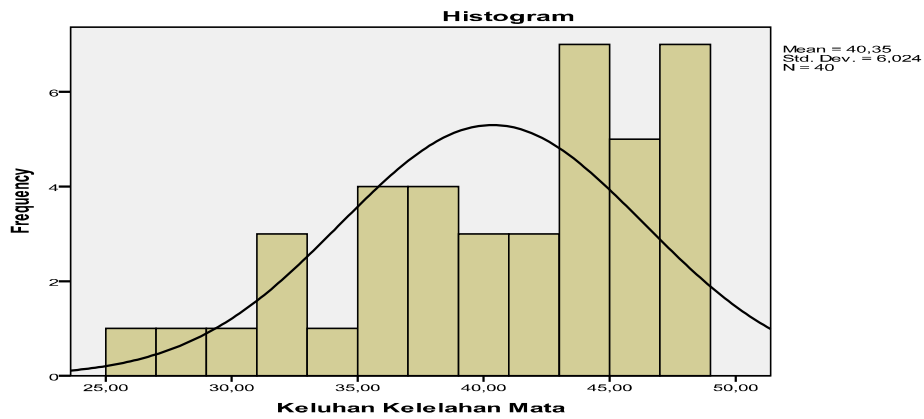
Keluhan Kelelahan Mata

| | | |
|----------------|---------|---------|
| N | Valid | 40 |
| | Missing | 0 |
| Mean | | 40,3500 |
| Median | | 41,0000 |
| Mode | | 48,00 |
| Std. Deviation | | 6,02367 |
| Minimum | | 26,00 |
| Maximum | | 48,00 |

Keluhan Kelelahan Mata

| | | Frequency | Percent | Valid Percent | Cumulative Percent |
|-------|-------|-----------|---------|---------------|--------------------|
| Valid | 26,00 | 1 | 2,5 | 2,5 | 2,5 |
| | 28,00 | 1 | 2,5 | 2,5 | 5,0 |
| | 30,00 | 1 | 2,5 | 2,5 | 7,5 |
| | 32,00 | 3 | 7,5 | 7,5 | 15,0 |
| | 34,00 | 1 | 2,5 | 2,5 | 17,5 |
| | 36,00 | 4 | 10,0 | 10,0 | 27,5 |
| | 37,00 | 2 | 5,0 | 5,0 | 32,5 |
| | 38,00 | 2 | 5,0 | 5,0 | 37,5 |
| | 39,00 | 3 | 7,5 | 7,5 | 45,0 |
| | 41,00 | 3 | 7,5 | 7,5 | 52,5 |
| | 43,00 | 3 | 7,5 | 7,5 | 60,0 |
| | 44,00 | 4 | 10,0 | 10,0 | 70,0 |
| | 45,00 | 3 | 7,5 | 7,5 | 77,5 |

| | | | | |
|-------|----|-------|-------|-------|
| 46,00 | 2 | 5,0 | 5,0 | 82,5 |
| 47,00 | 2 | 5,0 | 5,0 | 87,5 |
| 48,00 | 5 | 12,5 | 12,5 | 100,0 |
| Total | 40 | 100,0 | 100,0 | |



Statistics

masa_kerja

| | | |
|----------------|---------|--------|
| N | Valid | 40 |
| | Missing | 0 |
| Mean | | 1,3500 |
| Median | | 1,0000 |
| Mode | | 1,00 |
| Std. Deviation | | ,48305 |
| Minimum | | 1,00 |
| Maximum | | 2,00 |

masa_kerja

| | | Frequency | Percent | Valid Percent | Cumulative Percent |
|-------|------------|-----------|---------|---------------|--------------------|
| Valid | 2-10 tahun | 26 | 65,0 | 65,0 | 65,0 |
| | >10 tahun | 14 | 35,0 | 35,0 | 100,0 |
| | Total | 40 | 100,0 | 100,0 | |

Statistics

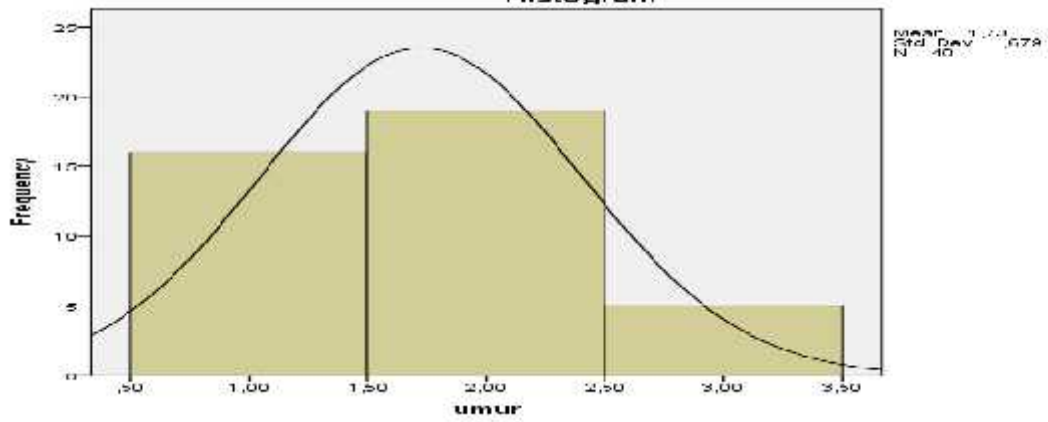
umur

| | | |
|----------------|---------|--------|
| N | Valid | 40 |
| | Missing | 0 |
| Mean | | 1,7250 |
| Median | | 2,0000 |
| Mode | | 2,00 |
| Std. Deviation | | ,67889 |
| Minimum | | 1,00 |
| Maximum | | 3,00 |

umur

| | | Frequency | Percent | Valid Percent | Cumulative Percent |
|-------|-------------|-----------|---------|---------------|--------------------|
| Valid | 17-25 tahun | 16 | 40,0 | 40,0 | 40,0 |
| | 26-35 tahun | 19 | 47,5 | 47,5 | 87,5 |
| | 36-45 tahun | 5 | 12,5 | 12,5 | 100,0 |
| Total | | 40 | 100,0 | 100,0 | |

Histogram



Statistics

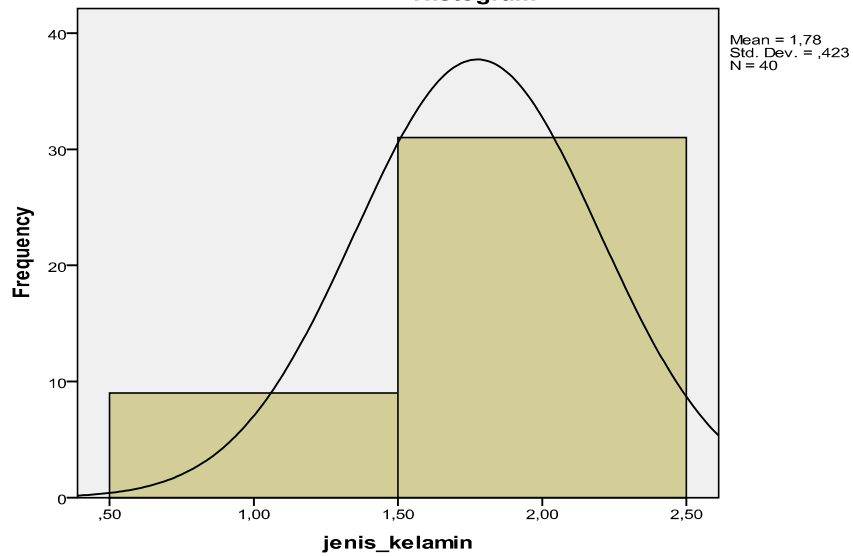
jenis_kelamin

| | | |
|----------------|---------|--------|
| N | Valid | 40 |
| | Missing | 0 |
| Mean | | 1,7750 |
| Median | | 2,0000 |
| Mode | | 2,00 |
| Std. Deviation | | ,42290 |
| Minimum | | 1,00 |
| Maximum | | 2,00 |
| Sum | | 71,00 |

jenis_kelamin

| | | Frequency | Percent | Valid Percent | Cumulative Percent |
|-------|-----------|-----------|---------|---------------|--------------------|
| Valid | Laki-laki | 9 | 22,5 | 22,5 | 22,5 |
| | Perempuan | 31 | 77,5 | 77,5 | 100,0 |
| | Total | 40 | 100,0 | 100,0 | |

Histogram



Correlations

| | | Keluhan Kelelahan Mata | Intensitas Pencahaya-an |
|-------------------------|---------------------|---------------------------|----------------------------|
| Keluhan Kelelahan Mata | Pearson Correlation | 1 | -,892** |
| | Sig. (2-tailed) | | ,000 |
| | N | 40 | 40 |
| Intensitas Pencahaya-an | Pearson Correlation | -,892** | 1 |
| | Sig. (2-tailed) | ,000 | |
| | N | 40 | 40 |

** . Correlation is significant at the 0.01 level (2-tailed).