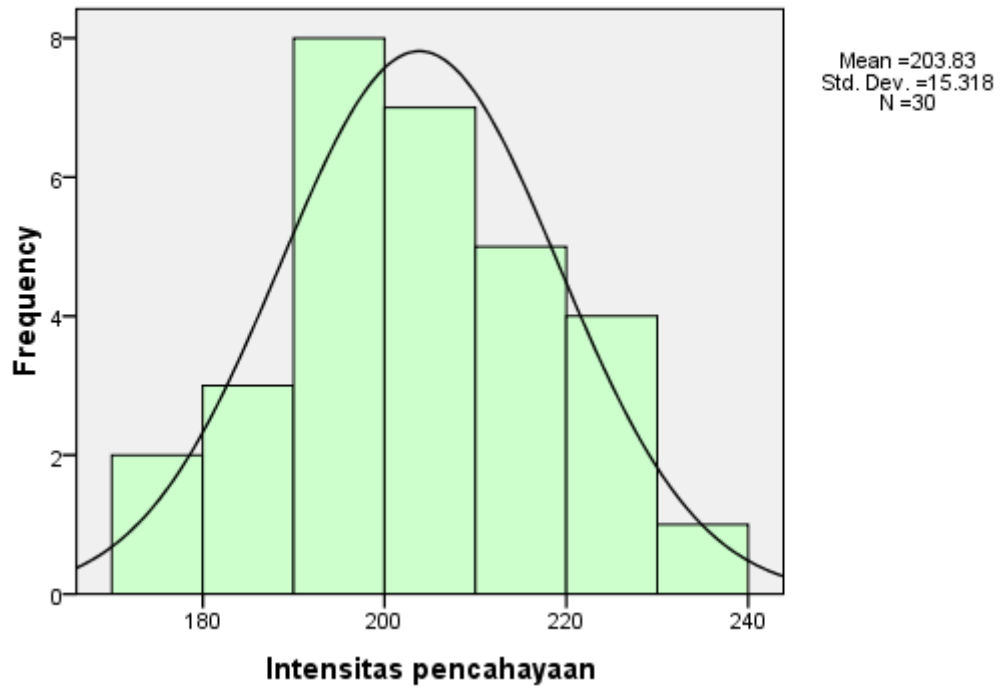


LAMPIRAN 4

Distribusi hasil pengukuran intensitas pencahayaan di tempat kerja penjahit celana bagian depan dan belakang konveksi CV. NEW BASIC Jakarta Barat

Statistics			Intensitas pencahayaan				
Intensitas pencahayaan				Frequency	Percent	Valid Percent	Cumulative Percent
N	Valid	30	Valid	174	1	3.3	3.3
	Missing	0		176	1	3.3	6.7
Mean		203.83		184	1	3.3	10.0
Std. Error of Mean		2.797		187	2	6.7	16.7
Median		204.00		192	1	3.3	20.0
Mode		196		194	2	6.7	26.7
Std. Deviation		15.318		196	3	10.0	36.7
Minimum		174		197	2	6.7	43.3
Maximum		236		201	1	3.3	46.7
				204	2	6.7	53.3
				206	1	3.3	56.7
				207	2	6.7	63.3
				208	1	3.3	66.7
				210	1	3.3	70.0
				211	1	3.3	73.3
				214	1	3.3	76.7
				216	1	3.3	80.0
				218	1	3.3	83.3
				222	1	3.3	86.7
				226	1	3.3	90.0
				227	1	3.3	93.3
				228	1	3.3	96.7
				236	1	3.3	100.0
			Total		30	100.0	100.0

Histogram



LAMPIRAN 5

Distribusi hasil pengukuran tingkat produktivitas pada penjahit celana bagian depan dan belakang di konveksi CV. NEW BASIC Jakarta Barat

Statistics

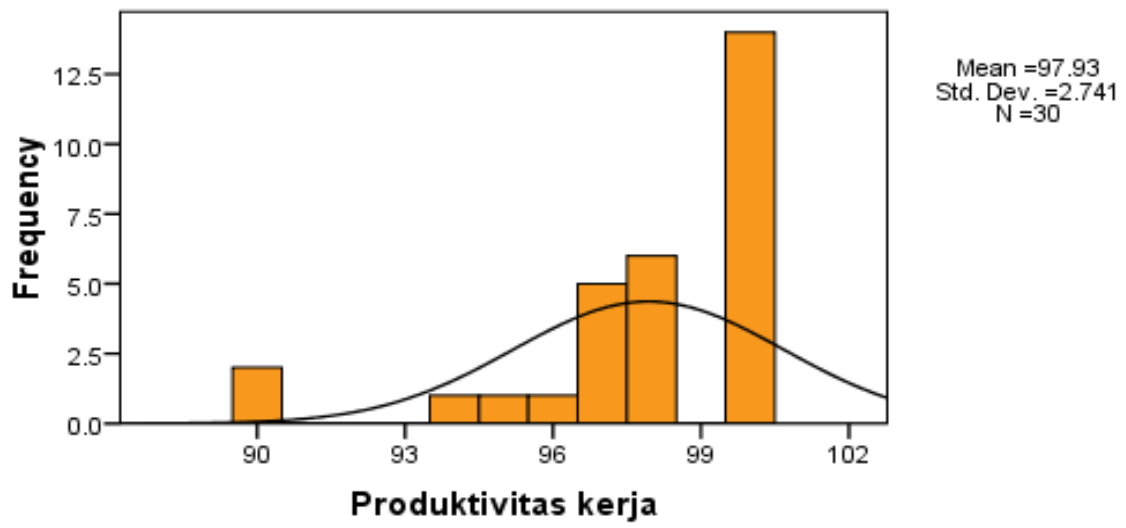
Produktivitas kerja

N	Valid	30
	Missing	0
Mean		97.93
Std. Error of Mean		.500
Median		98.00
Mode		100
Std. Deviation		2.741
Minimum		90
Maximum		100

Produktivitas kerja

	Frequency	Percent	Valid Percent	Cumulative Percent
Valid 90	2	6.7	6.7	6.7
94	1	3.3	3.3	10.0
95	1	3.3	3.3	13.3
96	1	3.3	3.3	16.7
97	5	16.7	16.7	33.3
98	6	20.0	20.0	53.3
100	14	46.7	46.7	100.0
Total	30	100.0	100.0	

Histogram



LAMPIRAN 6

Uji Normalitas

Case Processing Summary

	Cases					
	Valid		Missing		Total	
	N	Percent	N	Percent	N	Percent
Intensitas pencapaian	30	100.0%	0	.0%	30	100.0%
Produktivitas kerja	30	100.0%	0	.0%	30	100.0%

Tests of Normality

	Kolmogorov-Smirnov ^a			Shapiro-Wilk		
	Statistic	Df	Sig.	Statistic	df	Sig.
Intensitas pencapaian	.106	30	.200*	.984	30	.914
Produktivitas kerja	.241	30	.000	.746	30	.000

a. Lilliefors Significance Correction

*. This is a lower bound of the true significance.

		Statistic	Std. Error	
Pencapaian	Mean	203.83	2.797	
	95% Confidence Interval for Mean	Lower Bound	198.11	
		Upper Bound	209.55	
	5% Trimmed Mean	203.81		
	Median	204.00		
	Variance	234.626		
	Std. Deviation	15.318		
	Minimum	174		
	Maximum	236		
	Range	62		
	Interquartile Range	20		
	Skewness	.124	.427	
	Kurtosis	-.340	.833	
Produktivitas	Mean	97.93	.500	
	95% Confidence Interval for Mean	Lower Bound	96.91	
		Upper Bound	98.96	
	5% Trimmed Mean	98.26		
	Median	98.00		
	Variance	7.513		
	Std. Deviation	2.741		
	Minimum	90		
	Maximum	100		
	Range	10		
	Interquartile Range	3		
	Skewness	-1.745	.427	
	Kurtosis	3.058	.833	

LAMPIRAN 7

Uji korelasi Spearman Rank

Correlations

			Pencapaian	Produktivitas
Spearman's rho	Pencapaian	Correlation Coefficient	1.000	.606**
		Sig. (2-tailed)	.	.000
		N	30	30
	Produktivitas	Correlation Coefficient	.606**	1.000
		Sig. (2-tailed)	.000	.
		N	30	30

** . Correlation is significant at the 0.01 level (2-tailed).