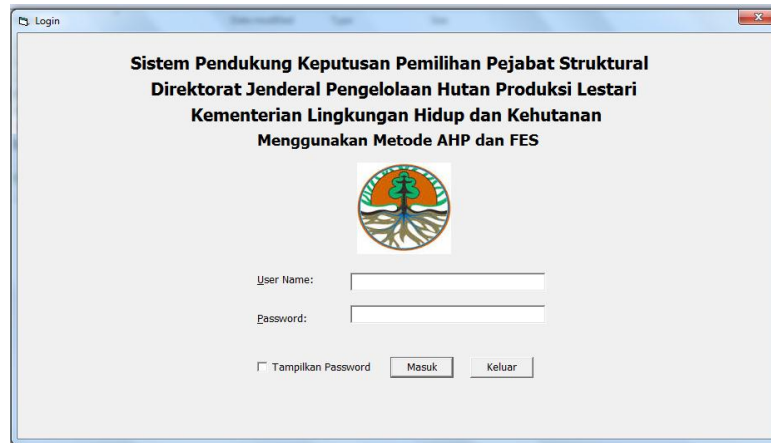


LAMPIRAN TAMPILAN APLIKASI DAN KODE SYNTAK PEMROGRAMAN

TUGAS AKHIR PEMILIHAN PEJABAT STRUKTURAL DI KEMENTERIAN LINGKUNGAN HIDUP DAN KEHUTANAN MENGUNAKAN METODE *ANALYTIC HIERARCHY PROCESS* DAN *FACTOR EVALUATION SYSTEM*



Syntax :

Option Explicit

Public Level As Integer

Public LoginSucceeded As Boolean

Private Sub Check1_Click()

 If Check1.Value = 1 Then

 Me.txtPassword.PasswordChar = ""

 Else

 Me.txtPassword.PasswordChar = "*"

 End If

End Sub

Private Sub cmdCancel_Click()

 'set the global var to false

 'to denote a failed login

 LoginSucceeded = False

 Unload Me

End Sub

Private Sub cmdOK_Click()

 Koneksi

 Dim rs As New ADODB.Recordset

 rs.Open "select * from login where `username`='" & Me.txtUserName.Text & "' and
 `password`='" & Me.txtPassword.Text & "'", Konektor

 If Not rs.EOF Then

 Do While Not rs.EOF

 Level = rs!Level

 Admin = rs![Nama Lengkap]

 rs.MoveNext

```

Loop
LoginSucceeded = True
frmUtama.Show
frmUtama.setLevel
Me.Hide
Else
MsgBox "Password Salah Coba Lagi!", , "Login"
txtPassword.SetFocus
End If
End Sub

```

```

Private Sub Form_Load()
Me.txtPassword.Text = ""
Me.txtUserName.Text = ""
End Sub

```

```

Private Sub Form_QueryUnload(Cancel As Integer, UnloadMode As Integer)
Dim y As String
y = MsgBox("Yakin Keluar?", vbInformation + vbYesNo)
If y = vbYes Then
End
Else
Cancel = 1
End If
End Sub

```

Kriteria	Urutan	Keterangan
Pendidikan	1	Ijazah Terakhir
Perencanaan	2	Nilai Perencanaan SKP
Masa Kerja	3	Golongan
Penghargaan	4	Sertifikat/Surat Keterangan
Keterampilan	5	Sertifikat
Konseptual	6	Nilai Konseptual SKP
Hubungan Kerja	7	Nilai Kerjasama PPK
Kepemimpinan	8	Nilai Kepemimpinan PP

Syntax :

```

Dim recMe As New ADODB.Recordset
Dim strQuery As String
Dim paramVal As String

```

```

Private Sub cmdBaru_Click()
clearForm Me
Me.txtKriteria.SetFocus

```

```
paramVal = ""  
End Sub
```

```
Private Sub cmdBatal_Click()  
clearForm Me  
paramVal = ""  
End Sub
```

```
Private Sub cmdEdit_Click()  
On Error GoTo errHandle  
If paramVal <> "" Then  
If Me.txtKriteria.Text <> "" And Me.txtUrutan.Text <> "" Then  
Dim data(2) As String  
Dim field(2) As String  
  
field(0) = "Kriteria"  
field(1) = "Urutan"  
field(2) = "Keterangan"  
  
data(0) = txtKriteria.Text  
data(1) = txtUrutan.Text  
data(2) = txtKeterangan.Text  
  
Dim fld(0) As String  
Dim dt(0) As String  
  
fld(0) = "Kriteria"  
dt(0) = txtKriteria.Text
```

```
Konektor.Execute AutoUpdateQuery("kriteria", field, data, "Kriteria", paramVal)  
Konektor.Execute AutoUpdateQuery("subkriteria", fld, dt, "Kriteria", paramVal)
```

```
MsgBox ("Data Berubah!")  
Me.dataKriteria.Refresh  
clearForm Me  
paramVal = ""  
Else  
MsgBox "Kriteria Dan Urutan Harus Diisi!"  
End If  
Else  
MsgBox "Pilih Yang Akan Di-edit Pada Tabel!"  
End If  
Exit Sub  
errHandle:  
MsgBox Err.Description  
End Sub
```

```
Private Sub cmdKeluar_Click()  
Unload Me  
End Sub
```

```

Private Sub cmdSimpan_Click()
    On Error GoTo errHandle
    paramVal = ""
    If txtKriteria.Text <> "" And Me.txtUrutan.Text <> "" Then
        Dim data(2) As String
        data(0) = txtKriteria.Text
        data(1) = txtUrutan.Text
        data(2) = txtKeterangan.Text
        Konektor.Execute AutoSaveQuery("kriteria", data)
        MsgBox ("Data Tersimpan!")
        Me.dataKriteria.Refresh
        clearForm Me
        txtKriteria.SetFocus
    Else
        MsgBox "Kriteria Dan Urutan Harus Diisi!"
    End If
    Exit Sub
errHandle:
    MsgBox Err.Description
End Sub

```

```

Private Sub cmhHapus_Click()
    On Error GoTo errHandle
    If paramVal <> "" Then
        If Me.txtKriteria.Text <> "" And Me.txtUrutan.Text <> "" Then
            Konektor.Execute AutoDeleteQuery("kriteria", "Kriteria", paramVal)
            Konektor.Execute AutoDeleteQuery("subkriteria", "Kriteria", paramVal)
            MsgBox ("Data Dihapus!")
            Me.dataKriteria.Refresh
            clearForm Me
            paramVal = ""
        Else
            MsgBox "Kriteria Dan Urutan Harus Diisi!"
        End If
    Else
        MsgBox "Pilih Yang Akan Dihapus Pada Tabel!"
    End If
    Exit Sub
errHandle:
    MsgBox Err.Description
End Sub

```

```

Private Sub Form_Load()
    Koneksi
    strQuery = "select * from `kriteria` order by `Urutan`"
    Me.dataKriteria.ConnectionString = strKoneksi
    Me.dataKriteria.RecordSource = strQuery

```

With tblKriteria

```
.AllowAddNew = False
.AllowArrows = False
.AllowDelete = False
.AllowRowSizing = True
.AllowUpdate = False
Set .DataSource = dataKriteria
End With
```

```
Me.txtUrutan.Text = Me.UpDown1.Value
End Sub
```

```
Private Sub tblKriteria_Click()
    Me.tblKriteria.col = 0
    txtKriteria.Text = Me.tblKriteria.Text
    paramVal = Me.tblKriteria.Text
```

```
    Me.tblKriteria.col = 1
    Me.txtUrutan.Text = Me.tblKriteria.Text
```

```
    Me.tblKriteria.col = 2
    Me.txtKeterangan.Text = Me.tblKriteria.Text
End Sub
```

```
Private Sub txtKeterangan_Change()
```

```
End Sub
```

```
Private Sub txtUrutan_Change()
    If Val(Me.txtUrutan.Text) <= 0 Then
    If Me.txtUrutan.Text = "" Then Me.txtUrutan.Text = 1
        Me.UpDown1.Value = 1
    Else
    Me.UpDown1.Value = Val(Me.txtUrutan.Text)
    End If
End Sub
```

```
Private Sub UpDown1_Change()
    Me.txtUrutan.Text = Me.UpDown1.Value
End Sub
```

Kriteria	Sub Kriteria	Urutan	Keterangan
Hubungan Kerja	Sangat Baik	1	Nilai >91
Hubungan Kerja	Baik	2	Nilai 76-90
Hubungan Kerja	Cukup	3	Nilai 61-75
Kepemimpinan	Sangat Baik	1	Nilai >91
Kepemimpinan	Baik	2	Nilai 76-90
Kepemimpinan	Cukup	3	Nilai 61-75
Keterampilan	Sangat Baik	1	Sertifikat L
Keterampilan	Baik	2	Sertifikat L
Keterampilan	Cukup	3	Sertifikat m
Konseptual	Sangat Baik	1	Nilai >91
Konseptual	Baik	2	Nilai 76-90
Konseptual	Cukup	3	Nilai 61-75
Masa Kerja	Sangat Baik	1	Golongan II
Masa Kerja	Baik	2	Golongan II
Masa Kerja	Cukup	3	Golongan II
Pendidikan	Sangat Baik	1	Ijazah S2
Pendidikan	Baik	2	Ijazah S1
Pendidikan	Cukup	3	Ijazah SMA
Penghargaan	Sangat Baik	1	Prestasi
Penghargaan	Baik	2	Pengabdian

Syntax:

```
Dim recMe As New ADODB.Recordset
```

```
Dim strQuery As String
```

```
Dim paramVal(1) As String
```

```
Dim param(1) As String
```

```
Private Sub cmdBaru_Click()
```

```
clearForm Me
```

```
Me.cmbKriteria.SetFocus
```

```
ClearParam
```

```
End Sub
```

```
Private Sub cmdBatal_Click()
```

```
clearForm Me
```

```
ClearParam
```

```
End Sub
```

```
Private Sub cmdKeluar_Click()
```

```
Unload Me
```

```
End Sub
```

```
Sub ClearParam()
```

```
paramVal(0) = ""
```

```
paramVal(1) = ""
```

```
End Sub
```

```
Private Sub cmdSimpan_Click()
```

```
On Error GoTo errHandle
```

```
If Me.cmbKriteria.Text <> "" And Me.txtSubKriteria.Text <> "" Then
```

```
paramVal(0) = Me.cmbKriteria.Text
```

```
paramVal(1) = Me.txtSubKriteria.Text
```

```
If IfExist("subkriteria", param, paramVal) = False Then
```

```
Dim data(3) As String
```

```
data(0) = cmbKriteria.Text
```

```
data(1) = txtSubKriteria.Text
```

```
data(2) = txtUrutan.Text
```

```
data(3) = txtKeterangan.Text
```

```
Konektor.Execute AutoSaveQuery("subkriteria", data)
```

```
MsgBox ("Data Tersimpan!")
```

```
Me.dataTabel.Refresh
```

```

        clearForm Me
        ClearParam
        txtSubKriteria.SetFocus
        Else
        MsgBox "Data Sudah Ada!"
        End If
        Else
        MsgBox "Kriteria Dan Urutan Harus Diisi!"
        End If
        Exit Sub
    errHandle:
        MsgBox Err.Description
    End Sub

Private Sub cmdEdit_Click()
    On Error GoTo errHandle
    If paramVal(0) <> "" And param(1) <> "" Then
    If Me.cmbKriteria.Text <> "" And Me.txtSubKriteria.Text <> "" Then
        Dim data(3) As String
        Dim field(3) As String

        field(0) = "Kriteria"
        field(1) = "Sub Kriteria"
        field(2) = "Urutan"
        field(3) = "Keterangan"

        data(0) = cmbKriteria.Text
        data(1) = txtSubKriteria.Text
        data(2) = txtUrutan.Text
        data(3) = txtKeterangan.Text

        Konektor.Execute AutoUpdateQuery2("subkriteria", field, data, param, paramVal)
        MsgBox ("Data Berubah!")
        Me.dataTabel.Refresh
        clearForm Me
        ClearParam
        Else
        MsgBox "Kriteria Dan Urutan Harus Diisi!"
        End If
        Else
        MsgBox "Pilih Yang Akan Di-edit Pada Tabel!"
        End If
        Exit Sub
    errHandle:
        MsgBox Err.Description
    End Sub

Private Sub cmhHapus_Click()
    On Error GoTo errHandle
    If param(0) <> "" And param(1) <> "" Then

```

```

If Me.cmbKriteria.Text <> "" And Me.txtSubKriteria.Text <> "" Then
    paramVal(0) = Me.cmbKriteria.Text
    paramVal(1) = Me.txtSubKriteria.Text
Konektor.Execute AutoDeleteQuery2("subkriteria", param, paramVal)
    MsgBox ("Data Dihapus!")
    Me.dataTabel.Refresh
    clearForm Me
    ClearParam
    Else
    MsgBox "Kriteria Dan Urutan Harus Diisi!"
    End If
    Else
    MsgBox "Pilih Yang Akan Dihapus Pada Tabel!"
    End If
    Exit Sub
errHandle:
    MsgBox Err.Description
    End Sub

Private Sub Form_Load()
    On Error Resume Next
    param(0) = "Kriteria"
    param(1) = "Sub Kriteria"
    Dim lstKriteria() As String
    Dim i As Integer

    Koneksi
strQuery = "select * from `subkriteria` order by `Kriteria`,`Urutan` asc"
    Me.dataTabel.ConnectionString = strKoneksi
    Me.dataTabel.RecordSource = strQuery

    With tblSubKriteria
        .AllowAddNew = False
        .AllowArrows = False
        .AllowDelete = False
        .AllowRowSizing = True
        .AllowUpdate = False
    Set .DataSource = dataTabel
    End With

    lstKriteria = GetList("kriteria", "Kriteria")

    cmbKriteria.Clear

    For i = 0 To UBound(lstKriteria)
    cmbKriteria.AddItem lstKriteria(i)
    Next i
    Me.txtUrutan.Text = Me.UpDown1.Value
    End Sub

```



```

Private Sub tblSubKriteria_Click()
    On Error Resume Next

    Me.tblSubKriteria.col = 0
    Me.cmbKriteria.Text = Me.tblSubKriteria.Text
    paramVal(0) = Me.tblSubKriteria.Text

    Me.tblSubKriteria.col = 1
    Me.txtSubKriteria.Text = Me.tblSubKriteria.Text
    paramVal(1) = Me.tblSubKriteria.Text

    Me.tblSubKriteria.col = 2
    Me.txtUrutan.Text = Me.tblSubKriteria.Text

    Me.tblSubKriteria.col = 3
    Me.txtKeterangan.Text = Me.tblSubKriteria.Text
End Sub

Private Sub txtKeterangan_Change()

End Sub

Private Sub txtUrutan_Change()
    If Val(Me.txtUrutan.Text) <= 0 Then
        Me.UpDown1.Value = 1
    Else
        Me.UpDown1.Value = Val(Me.txtUrutan.Text)
    End If
End Sub

Private Sub UpDown1_Change()
    Me.txtUrutan.Text = Me.UpDown1.Value
End Sub

```

NIP	Nama	Alamat	Jenis Kelamin
19600103 199404 1 001	Sony	Parung	La
19610605 199103 1 001	Iwan	Jakarta	La
19670112 199403 2 003	Asih	Mampang	Pe
19680715 199403 1 007	Roni	Makassar	La
19730830 199903 1 005	Fahrudi	Bogor	La
19750617 199703 1 003	Karman	Cilebut	La
19840705 200801 1 001	Anto	Rapua	La
19881218 200902 1 002	Ani	Gorontalo	Pe

Syntax :

```
Dim recMe As New ADODB.Recordset
Dim strQuery As String
Dim paramVal As String
```

```
Private Sub cmdBaru_Click()
    clearForm Me
    Me.txtNip.SetFocus
    paramVal = ""
End Sub
```

```
Private Sub cmdBatal_Click()
    clearForm Me
    paramVal = ""
End Sub
```

```
Private Sub cmdKeluar_Click()
    Unload Me
End Sub
```

```
Private Sub cmdSimpan_Click()
    On Error GoTo errHandle
    paramVal = ""
    If txtNip.Text <> "" Then
        Dim data(9) As String
        data(0) = txtNip.Text
        data(1) = txtNama.Text
        data(2) = txtAlamat.Text
        data(3) = JenisKelamin(Option1.Value, Option2.Value)
        data(4) = cmbAgama.Text
        data(5) = cmbPendidikan.Text
        data(6) = cmbJurusan.Text
        data(7) = cmbPangkat.Text
        data(8) = txtKeterangan.Text
        data(9) = Me.DTPicker1.Value
```

```
Konektor.Execute AutoSaveQuery("kandidat", data)
MsgBox ("Data Tersimpan!")
Me.dataKandidat.Refresh
```

```

clearForm Me
txtNip.SetFocus
Else
MsgBox "Kandidat Dan Urutan Harus Diisi!"
End If
Exit Sub
errHandle:
MsgBox Err.Description
End Sub

```

```

Function JenisKelamin(l As Boolean, p As Boolean) As String
If l = True Then JenisKelamin = "Laki-laki"
If p = True Then JenisKelamin = "Perempuan"
End Function

```

```

Sub setJenisKelamin(str As String)
If str = "Laki-laki" Then
Option1.Value = True
Else
Option2.Value = True
End If
End Sub

```

```

Private Sub cmdEdit_Click()
On Error GoTo errHandle
If paramVal <> "" Then
If Me.txtNip.Text <> "" Then
Dim data(9) As String
Dim field(9) As String

field(0) = "NIP"
field(1) = "Nama"
field(2) = "Alamat"
field(3) = "Jenis Kelamin"
field(4) = "Agama"
field(5) = "Pendidikan"
field(6) = "Jurusan"
field(7) = "Pangkat Golongan"
field(8) = "Keterangan"
field(9) = "Tanggal"

data(0) = txtNip.Text
data(1) = txtNama.Text
data(2) = txtAlamat.Text
data(3) = JenisKelamin(Option1.Value, Option2.Value)
data(4) = cmbAgama.Text
data(5) = cmbPendidikan.Text
data(6) = cmbJurusan.Text
data(7) = cmbPangkat.Text
data(8) = txtKeterangan.Text

```

```
data(9) = Me.DTPicker1.Value
```

```
Konektor.Execute AutoUpdateQuery("kandidat", field, data, "Nip", paramVal)
MsgBox ("Data Berubah!")
Me.dataKandidat.Refresh
clearForm Me
paramVal = ""
Else
MsgBox "Kandidat Dan Urutan Harus Diisi!"
End If
Else
MsgBox "Pilih Yang Akan Di-edit Pada Tabel!"
End If
Exit Sub
errHandle:
MsgBox Err.Description
End Sub
```

```
Private Sub cmhHapus_Click()
On Error GoTo errHandle
If paramVal <> "" Then
If Me.txtNip.Text <> "" Then
Konektor.Execute AutoDeleteQuery("kandidat", "Nip", paramVal)
MsgBox ("Data Dihapus!")
Me.dataKandidat.Refresh
clearForm Me
paramVal = ""
Else
MsgBox "Kandidat Dan Urutan Harus Diisi!"
End If
Else
MsgBox "Pilih Yang Akan Dihapus Pada Tabel!"
End If
Exit Sub
errHandle:
MsgBox Err.Description
End Sub
```

```
Private Sub Form_Load()
Koneksi
strQuery = "select * from `kandidat` order by `Nip`"
Me.dataKandidat.ConnectionString = strKoneksi
Me.dataKandidat.RecordSource = strQuery

With tblKandidat
.AllowAddNew = False
.AllowArrows = False
.AllowDelete = False
.AllowRowSizing = True
.AllowUpdate = False
```

```
Set .DataSource = dataKandidat
    End With
Me.Picture = Nothing

    With cmbAgama
        .Clear
        .AddItem "Islam"
        .AddItem "Kristen"
        .AddItem "Katolik"
        .AddItem "Protestan"
        .AddItem "Hindu"
        .AddItem "Budha"
    End With

    With cmbPendidikan
        .Clear
        .AddItem "SMA/Diploma"
        .AddItem "S1"
        .AddItem "S2"
    End With

    With cmbJurusan
        .Clear
        .AddItem "Kehutanan"
        .AddItem "Ekonomi"
        .AddItem "Kebijakan Publik"
        .AddItem "Teknik Informatika"
        .AddItem "Sistem Informasi"
        .AddItem "Akuntansi"
        .AddItem "Bahasa"
        .AddItem "Teknik"
        .AddItem "Lainnya"
    End With

    With cmbPangkat
        .Clear

        .AddItem "III b"
        .AddItem "III c"
        .AddItem "III d"
        .AddItem "IV a"
        .AddItem "IV b"
        .AddItem "IV c"
        .AddItem "IV d"
    End With

Me.DTPicker1.Value = Now
End Sub

Private Sub tblkandidat_Click()
```

```
On Error Resume Next
Me.tblKandidat.col = 0
txtNip.Text = Me.tblKandidat.Text
paramVal = Me.tblKandidat.Text

Me.tblKandidat.col = 1
Me.txtNama.Text = Me.tblKandidat.Text

Me.tblKandidat.col = 2
Me.txtAlamat.Text = Me.tblKandidat.Text

Me.tblKandidat.col = 3
setJenisKelamin (Me.tblKandidat.Text)

Me.tblKandidat.col = 4
Me.cmbAgama.Text = Me.tblKandidat.Text

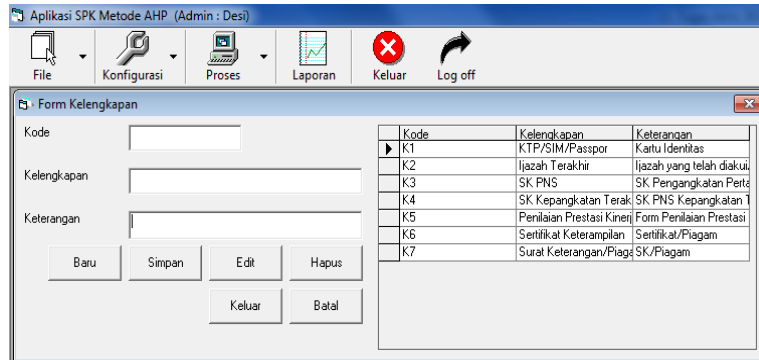
Me.tblKandidat.col = 5
Me.cmbPendidikan.Text = Me.tblKandidat.Text

Me.tblKandidat.col = 6
Me.cmbJurusan.Text = Me.tblKandidat.Text

Me.tblKandidat.col = 7
Me.cmbPangkat.Text = Me.tblKandidat.Text

Me.tblKandidat.col = 8
Me.txtKeterangan.Text = Me.tblKandidat.Text

Me.tblKandidat.col = 9
Me.DTPicker1.Value = Me.tblKandidat.Text
End Sub
```



Syntax :

```
Dim recMe As New ADODB.Recordset
```

```
Dim strQuery As String
```

```
Dim paramVal As String
```

```
Dim paramVal2 As String
```

```
Private Sub cmdBaru_Click()
```

```
clearForm Me
```

```
Me.txtKode.SetFocus
```

```
paramVal = ""
```

```
End Sub
```

```
Private Sub cmdBatal_Click()
```

```
clearForm Me
```

```
paramVal = ""
```

```
End Sub
```

```
Private Sub cmdEdit_Click()
```

```
On Error GoTo errHandle
```

```
If paramVal <> "" Then
```

```
If Me.txtKode.Text <> "" And Me.txtKelengkapan.Text <> "" Then
```

```
Dim data(2) As String
```

```
Dim field(2) As String
```

```
field(0) = "Kode"
```

```
field(1) = "Kelengkapan"
```

```
field(2) = "Keterangan"
```

```
data(0) = txtKode.Text
```

```
data(1) = txtKelengkapan.Text
```

```
data(2) = txtKeterangan.Text
```

```
Dim fld(0) As String
```

```
Dim dt(0) As String
```

```
Konektor.Execute AutoUpdateQuery("kelengkapan", field, data, "Kode", paramVal)
```

```
MsgBox ("Data Berubah!")
```

```
Me.Adodc1.Refresh
```

```
clearForm Me
```

```

        paramVal = ""
        Else
        MsgBox "Kode dan Kelengkapan Diisi!"
        End If
        Else
        MsgBox "Pilih Yang Akan Di-edit Pada Tabel!"
        End If
        Exit Sub
    errHandle:
        MsgBox Err.Description
    End Sub

    Private Sub cmdKeluar_Click()
        Unload Me
    End Sub

    Private Sub cmdSimpan_Click()
        On Error GoTo errHandle
        paramVal = ""
        If Me.txtKode.Text <> "" And Me.txtKelengkapan.Text <> "" Then
            Dim data(2) As String
            data(0) = Me.txtKode.Text
            data(1) = Me.txtKelengkapan.Text
            data(2) = Me.txtKeterangan.Text
            Konektor.Execute AutoSaveQuery("kelengkapan", data)
            MsgBox ("Data Tersimpan!")
            Me.Adodc1.Refresh
            clearForm Me
            Me.txtKode.SetFocus
        Else
            MsgBox "Kode dan Kelengkapan Harus Diisi!"
        End If
        Exit Sub
    errHandle:
        MsgBox Err.Description
    End Sub

    Private Sub cmhHapus_Click()
        On Error GoTo errHandle
        If paramVal <> "" Then
            If Me.txtKode.Text <> "" And Me.txtKeterangan.Text <> "" Then
                Konektor.Execute AutoDeleteQuery("kelengkapan", "Kode", paramVal)
                MsgBox ("Data Dihapus!")
                Me.Adodc1.Refresh

                Dim q As String
                q = "delete from `verifikasi` where `Kelengkapan`=" & paramVal2 & ""
                Konektor.Execute q, adCmdText

                clearForm Me
            End If
        End If
    End Sub

```



```

        paramVal = ""
        paramVal2 = ""
        Else
        MsgBox "Kode dan Kelengkapan Harus Diisi!"
        End If
        Else
        MsgBox "Pilih Yang Akan Dihapus Pada Tabel!"
        End If
        Exit Sub
    errHandle:
        MsgBox Err.Description
    End Sub

    Private Sub DataGrid1_Click()
        Me.DataGrid1.col = 0
        Me.txtKode.Text = Me.DataGrid1.Text
        paramVal = Me.DataGrid1.Text

        Me.DataGrid1.col = 1
        Me.txtKelengkapan.Text = Me.DataGrid1.Text
        paramVal2 = Me.DataGrid1.Text

        Me.DataGrid1.col = 2
        Me.txtKeterangan.Text = Me.DataGrid1.Text
    End Sub

    Private Sub Form_Load()
        Koneksi
        strQuery = "select * from `kelengkapan` order by `Kode`"
        Me.Adodc1.ConnectionString = strKoneksi
        Me.Adodc1.RecordSource = strQuery

        With Me.DataGrid1
            .AllowAddNew = False
            .AllowArrows = False
            .AllowDelete = False
            .AllowRowSizing = True
            .AllowUpdate = False
        Set .DataSource = Me.Adodc1
        End With
    End Sub

```

Aplikasi SPK Metode AHP (Admin : Des)

File Konfigurasi Proses Laporan Keluar Log off

Form Perbandingan Berpasangan

Matriks Perbandingan Berpasangan					Rasio Konsistensi				
	Pendidikan	Perencanaan	Masa Kerja	Penghargaan	Keterampilan	Jumlah	Priority Vector	Normalisasi	Hasil
Pendidikan	1	3	2	3		2.143	0.260	2.411	
Perencanaan	0.333	1	2	2		1.444	0.180	1.624	
Masa Kerja	0.500	0.500	1	2		1.213	0.152	1.365	
Penghargaan	0.333	0.500	0.500	1		0.946	0.118	1.064	
Keterampilan	0.500	0.500	0.500	0.500	0.333	0.846	0.106	0.952	
Konsepstual	0.333	0.333	0.500	0.333	0	0.554	0.070	0.634	
Hubungan Kerja	0.333	0.333	0.333	0.500	0	0.482	0.060	0.542	
Kepemimpinan	0.200	0.333	0.333	0.500	0	0.364	0.046	0.410	
Jumlah	3.532	6.499	7.166	9.833	10			9.002	

Priority Vector Matriks Normalisasi					
	Pendidikan	Perencanaan	Masa Kerja	Penghargaan	Keterampilan
Pendidikan	0.283	0.462	0.279	0.305	0
Perencanaan	0.094	0.154	0.279	0.203	0
Masa Kerja	0.142	0.077	0.140	0.203	0
Penghargaan	0.094	0.077	0.070	0.102	0
Keterampilan	0.142	0.077	0.070	0.051	0
Konsepstual	0.094	0.051	0.070	0.034	0
Hubungan Kerja	0.094	0.051	0.046	0.051	0
Kepemimpinan	0.057	0.051	0.046	0.051	0
Jumlah	1.000	1.000	1.000	1.000	1

nMaks : 1.125
Indeks Konsistensi : -0.859
Rasio Konsistensi : -0.609
Konsistensi : Konsisten

Proses Simpan Keluar

Syntax :

Dim jlhKriteria As Integer

Dim jlhBulat As Integer

Dim strKriteria() As String

Sub loading()

Koneksi

Dim rs As New ADODB.Recordset

Dim lstKriteria() As String

rs.Open "select `kriteria` from `kriteria` order by `urutan` asc", Konektor

'buat matriks perbandingan berpasangan

Dim i As Integer

i = 0

dg1.ColWidth(dg1.Cols - 2) = 1500

Do While Not rs.EOF

ReDim Preserve lstKriteria(i)

lstKriteria(i) = rs!kriteria

dg1.ColWidth(dg1.Cols - 1) = 1500

dg1.ColAlignment(dg1.Cols - 1) = 3

dg1.TextMatrix(0, dg1.Cols - 1) = rs!kriteria

dg1.Cols = dg1.Cols + 1

rs.MoveNext

i = i + 1

Loop

dg1.Cols = dg1.Cols - 1

strKriteria = lstKriteria

jlhKriteria = UBound(lstKriteria) + 1

For i = 0 To jlhKriteria - 1

dg1.TextMatrix(dg1.Rows - 1, 0) = lstKriteria(i)

dg1.Rows = dg1.Rows + 1

Next

dg1.TextMatrix(dg1.Rows - 1, 0) = "Jumlah"

```

    'buat matriks nilai kriteria
    For i = 0 To jlhKriteria - 1
    dg2.TextMatrix(0, dg2.Cols - 1) = lstKriteria(i)
        dg2.Cols = dg2.Cols + 1
        dg2.ColWidth(i) = 1500
        dg2.ColAlignment(i + 1) = 3
    Next
    dg2.ColWidth(dg2.Cols - 1) = 1300
    dg2.ColAlignment(dg2.Cols - 1) = 3
    dg2.TextMatrix(0, dg2.Cols - 1) = "Jumlah Baris"
        dg2.Cols = dg2.Cols + 1
        dg2.ColAlignment(dg2.Cols - 1) = 3
        dg2.ColWidth(dg2.Cols - 1) = 2500
    dg2.TextMatrix(0, dg2.Cols - 1) = "Priority Vector Normalisasi"

```

```

    For i = 0 To jlhKriteria - 1
    dg2.TextMatrix(dg2.Rows - 1, 0) = lstKriteria(i)
        dg2.Rows = dg2.Rows + 1
    Next
    dg2.TextMatrix(dg2.Rows - 1, 0) = "Jumlah"

```

```

    'buat matriks rasio konsistensi
    dg4.ColWidth(dg4.Cols - 2) = 1500
    dg4.ColWidth(dg4.Cols - 1) = 1200
    dg4.TextMatrix(0, dg4.Cols - 1) = "Jumlah Baris"
        dg4.Cols = dg4.Cols + 1
        dg4.ColWidth(dg4.Cols - 1) = 2400
    dg4.TextMatrix(0, dg4.Cols - 1) = "Priority Vector Normalisasi"
        dg4.Cols = dg4.Cols + 1
        dg4.ColWidth(dg4.Cols - 1) = 1500
    dg4.TextMatrix(0, dg4.Cols - 1) = "Hasil"
    For i = 0 To jlhKriteria - 1
        dg4.ColWidth(dg4.Cols - 1) = 1500
    dg4.TextMatrix(dg4.Rows - 1, 0) = lstKriteria(i)
        dg4.Rows = dg4.Rows + 1
    Next
    dg4.ColWidth(dg4.Cols - 1) = 1000
    dg4.TextMatrix(dg4.Rows - 1, 0) = "Jumlah"

```

```

    isiMatriksPerbandinganBerpsangan
    End Sub

```

```

Sub isiMatriksPerbandinganBerpsangan()
    Dim rs As New ADODB.Recordset

```

```

rs.Open "select * from `pberpasangan` where `kriteria`='all'", Konektor

```

```

    For i = 1 To jlhKriteria
    dg1.TextMatrix(i, i) = 1

```

```

Next
    If Not rs.EOF Then
    Do While Not rs.EOF
    If Val(rs!rowindex) > Val(rs!ColIndex) Then
dg1.TextMatrix(Val(rs!rowindex) + 1, Val(rs!ColIndex) + 1) = Val(Format((rs!nilai),
"0.000"))
    Else
dg1.TextMatrix(Val(rs!rowindex) + 1, Val(rs!ColIndex) + 1) = Val(rs!nilai)
    End If
    rs.MoveNext
    Loop
hitungMatriksPerbandinganBerpasangan
hitungMatriksNilaiKriteria
"hitungMatriksPenjumlahanTiapBaris
hitungMatriksRasioKonsistensi
hitungLainya
End If

```

End Sub

Sub hitungMatriksPerbandinganBerpasangan()

On Error Resume Next

Dim i, j As Integer

For i = 0 To jlhKriteria - 1

For j = 0 To jlhKriteria - 1

If i > j Then

dg1.TextMatrix(i + 1, j + 1) = Format(Round(Val(dg1.TextMatrix(i + 1, i + 1)) /
Val(dg1.TextMatrix(j + 1, i + 1)), jlhBulat), "0.000")

End If

Next

Next

For i = 0 To jlhKriteria - 1

Dim jlh As Double

jlh = 0

For j = 0 To jlhKriteria - 1

jlh = jlh + Val(dg1.TextMatrix(j + 1, i + 1))

Next

dg1.TextMatrix(jlhKriteria + 1, i + 1) = Format(Math.Round(jlh, jlhBulat), "0.000")

Next

End Sub

Sub hitungMatriksNilaiKriteria()

Dim i As Integer

Dim j As Integer

Dim jlh As Double

For i = 0 To jlhKriteria - 1

```

        For j = 0 To jlhKriteria - 1
dg2.TextMatrix(j + 1, i + 1) = Format(Math.Round(Val(dg1.TextMatrix(j + 1, i + 1)) /
        Val(dg1.TextMatrix(dg1.Rows - 1, i + 1)), jlhBulat), "0.000")
        Next
    Next

```

```

        For row = 0 To jlhKriteria - 1
            jlh = 0
            For kol = 0 To jlhKriteria - 1
                jlh = jlh + Val(dg2.TextMatrix(row + 1, kol + 1))
            Next
dg2.TextMatrix(row + 1, jlhKriteria + 1) = Format(Math.Round(jlh, jlhBulat), "0.000")
        Next

```

```

        For row = 0 To jlhKriteria - 1
dg2.TextMatrix(row + 1, jlhKriteria + 2) = Format(Math.Round(Val(dg2.TextMatrix(row +
1, jlhKriteria + 1)) / jlhKriteria, jlhBulat), "0.000")
        Next

```

```

        For i = 0 To jlhKriteria
            jlh = 0
            For j = 0 To jlhKriteria - 1
                jlh = jlh + Val(dg2.TextMatrix(j + 1, i + 1))
            Next
dg2.TextMatrix(jlhKriteria + 1, i + 1) = Format(Math.Round(jlh, jlhBulat), "0.000")
        Next
    End Sub

```

```

Sub hitungMatriksRasioKonsistensi()
    Dim jlh As Double
        jlh = 0
        For row = 0 To jlhKriteria - 1
dg4.TextMatrix(row + 1, 1) = Format(Val(dg2.TextMatrix(row + 1, jlhKriteria + 1)),
        "0.000")
dg4.TextMatrix(row + 1, 2) = Format(Val(dg2.TextMatrix(row + 1, jlhKriteria + 2)),
        "0.000")
            dg4.TextMatrix(row + 1, 3) = Format(Val(dg4.TextMatrix(row + 1, 1)) +
                Val(dg4.TextMatrix(row + 1, 2)), "0.000")
            jlh = jlh + Val(dg4.TextMatrix(row + 1, 3))
        Next
dg4.TextMatrix(jlhKriteria + 1, 3) = Format(Math.Round(jlh, jlhBulat), "0.000")
    End Sub

```

```

Sub hitungLainya()
nMaks.Caption = "nMaks : " & Format(Math.Round(Val(dg4.TextMatrix(jlhKriteria + 1, 3))
        / jlhKriteria, jlhBulat), "0.000")
ik.Caption = "Indeks Konsistensi : " & Format(Math.Round(((Val(dg4.TextMatrix(jlhKriteria
        + 1, 3)) / jlhKriteria) - jlhKriteria) / jlhKriteria, jlhBulat), "0.000")

```

```

rk.Caption = "Rasio Konsistensi : " & Format(Math.Round((((Val(dg4.TextMatrix(jlhKriteria
+ 1, 3)) / jlhKriteria) - jlhKriteria) / jlhKriteria) / NilaiIndeksRandom(jlhKriteria), jlhBulat),
"0.000")
Dim rc As Double
rc = Val(Format(Math.Round((((Val(dg4.TextMatrix(jlhKriteria + 1, 3)) / jlhKriteria) -
jlhKriteria) / jlhKriteria) / NilaiIndeksRandom(jlhKriteria), jlhBulat), "0.000"))
If rc < 0.1 Then
k.Caption = "Konsistensi : Konsisten"
Else
k.Caption = "Konsistensi : Tidak Konsisten"
End If
End Sub

Private Sub cmdProses_Click()
hitungMatriksPerbandinganBerpasangan
hitungMatriksNilaiKriteria
"hitungMatriksPenjumlahanTiapBaris
hitungMatriksRasioKonsistensi
hitungLainya
End Sub

Private Sub cmdSimpan_Click()
On Error Resume Next
Konektor.Execute "delete from `pberpasangan` where `kriteria`='all'"

For i = 0 To jlhKriteria - 1
For j = 0 To jlhKriteria - 1
Konektor.Execute "insert into `pberpasangan` values('all','" & j & "','" & i & "','" &
dg1.TextMatrix(i + 1, j + 1) & "'"")"
Next
Next

Konektor.Execute "delete from `hasil` where `kriteria`='all'"

For i = 0 To jlhKriteria - 1
Konektor.Execute "insert into `hasil` values('all,'" & strKriteria(i) & "','" &
Val(dg2.TextMatrix(i + 1, jlhKriteria + 2)) & "'"")"
Next
MsgBox ("Data Tersimpan")
End Sub

Private Sub Command1_Click()
Unload Me
End Sub

Private Sub dg1_DblClick()
If dg1.col > dg1.row Then
txtNilai.Visible = True
txtNilai.Width = dg1.CellWidth
txtNilai.Height = dg1.CellHeight

```

```
txtNilai.Left = dg1.CellLeft + 15
txtNilai.Top = dg1.CellTop + 360
txtNilai.Text = dg1.Text
dg1.Enabled = False
txtNilai.SetFocus
End If
End Sub
```

```
Private Sub Form_Load()
dg1.WordWrap = True
dg2.WordWrap = True
dg4.WordWrap = True
jlbBulat = 3
loading
End Sub
```

```
Private Sub nMaks_Click()

End Sub
```

```
Private Sub txtNilai_KeyPress(KeyAscii As Integer)
If KeyAscii = 13 Then
If Val(txtNilai.Text) > 0 Then
dg1.Enabled = True
dg1.Text = Val(txtNilai.Text)
txtNilai.Visible = False
dg1.SetFocus
Else
MsgBox "Nilai Harus > 0"
End If
End If
End Sub
```

Aplikasi SPK Metode AHP (Admin : Desi)

File Konfigurasi Proses Laporan Keluar Log off

Form Perbandingan Berpasangan Sub Kriteria

Matrik: Perbandingan Berpasangan

	Sangat Baik	Baik	Cukup
Sangat Baik	1	3	5
Baik	0.333	1	3
Cukup	0.200	0.333	1
Jumlah	1.533	4.333	9.000

Rasio Konsistensi

	Jumlah	Priority Vector Normalisasi	Hasil
Sangat Baik	1.900	0.633	2.533
Baik	0.781	0.260	1.041
Cukup	0.318	0.106	0.424
Jumlah			3.998

Priority Vector Matrik: Normalisasi

	Sangat Baik	Baik	Cukup	Jumlah Baris	Priority Vect
Sangat Baik	0.662	0.692	0.556	1.900	0.1
Baik	0.217	0.231	0.333	0.781	0.1
Cukup	0.130	0.077	0.111	0.318	0.1
Jumlah	0.999	1.000	1.000	2.999	0.1

nMaks : 1.333
Indeks Konsistensi : -0.556
Rasio Konsistensi : -0.958
Konsistensi : Konsisten

Pilih Kriteria

- Pendidikan
- Perencanaan
- Masa Kerja
- Penghargaan
- Keterampilan
- Konsepual
- Hubungan Kerja
- Kepemimpinan

Proses Simpan Keluar

Syntax :

Dim jlhKriteria As Integer

Dim jlhBulat As Integer

Dim strKriteria() As String

Sub loading()

Koneksi

Dim rs As New ADODB.Recordset

cmbKriteria.Clear

rs.Open "select `Kriteria` from `kriteria` order by `Urutan`", Konektor

If Not rs.EOF Then

Do While Not rs.EOF

cmbKriteria.AddItem rs!kriteria

rs.MoveNext

Loop

rs.Close

Else

MsgBox "Data Kriteria Tidak Ada!"

End If

End Sub

Sub BuatMatriks(kriteria As String)

Me.dg1.Cols = 2

Me.dg2.Cols = 2

Me.dg4.Cols = 2

Me.dg1.Rows = 2

Me.dg2.Rows = 2

Me.dg4.Rows = 2

dg1.TextMatrix(1, 1) = ""

dg2.TextMatrix(1, 1) = ""

dg4.TextMatrix(1, 1) = ""

Dim rs As New ADODB.Recordset


```

Dim lstKriteria() As String
rs.Open "select `Sub Kriteria` from `subkriteria` where `kriteria`='" & kriteria & "' order by
`urutan` asc", Konektor
'buat matriks perbandingan berpasangan
Dim i As Integer
i = 0
If Not rs.EOF Then
dg1.ColWidth(dg1.Cols - 2) = 1500
Do While Not rs.EOF
ReDim Preserve lstKriteria(i)
lstKriteria(i) = rs![Sub Kriteria]
dg1.ColWidth(dg1.Cols - 1) = 1500
dg1.ColAlignment(dg1.Cols - 1) = 3
dg1.TextMatrix(0, dg1.Cols - 1) = rs![Sub Kriteria]
dg1.Cols = dg1.Cols + 1
rs.MoveNext
i = i + 1
Loop
dg1.Cols = dg1.Cols - 1

strKriteria = lstKriteria

jhlKriteria = UBound(lstKriteria) + 1

For i = 0 To jhlKriteria - 1
dg1.TextMatrix(dg1.Rows - 1, 0) = lstKriteria(i)
dg1.Rows = dg1.Rows + 1
Next
dg1.TextMatrix(dg1.Rows - 1, 0) = "Jumlah"

'buat matriks nilai kriteria
For i = 0 To jhlKriteria - 1
dg2.TextMatrix(0, dg2.Cols - 1) = lstKriteria(i)
dg2.Cols = dg2.Cols + 1
dg2.ColWidth(i) = 1500
dg2.ColAlignment(i + 1) = 3
Next
dg2.ColWidth(dg2.Cols - 1) = 1300
dg2.ColAlignment(dg2.Cols - 1) = 3
dg2.TextMatrix(0, dg2.Cols - 1) = "Jumlah Baris"
dg2.Cols = dg2.Cols + 1
dg2.ColAlignment(dg2.Cols - 1) = 3
dg2.ColWidth(dg2.Cols - 1) = 2500
dg2.TextMatrix(0, dg2.Cols - 1) = "Priority Vector Normalisasi"
dg2.Cols = dg2.Cols + 1
dg2.ColWidth(dg2.Cols - 1) = 2500
dg2.TextMatrix(0, dg2.Cols - 1) = "Prioritas Sub Kriteria"

For i = 0 To jhlKriteria - 1
dg2.TextMatrix(dg2.Rows - 1, 0) = lstKriteria(i)

```

```
dg2.Rows = dg2.Rows + 1
Next
dg2.TextMatrix(dg2.Rows - 1, 0) = "Jumlah"
```

```
'buat matriks rasio konsistensi
dg4.ColWidth(dg4.Cols - 2) = 1500
dg4.ColWidth(dg4.Cols - 1) = 1200
dg4.TextMatrix(0, dg4.Cols - 1) = "Jumlah Baris"
dg4.Cols = dg4.Cols + 1
dg4.ColWidth(dg4.Cols - 1) = 2400
dg4.TextMatrix(0, dg4.Cols - 1) = "Priority Vector Normalisasi"
dg4.Cols = dg4.Cols + 1
dg4.ColWidth(dg4.Cols - 1) = 1500
dg4.TextMatrix(0, dg4.Cols - 1) = "Hasil"
For i = 0 To jlhKriteria - 1
dg4.ColWidth(dg4.Cols - 1) = 1500
dg4.TextMatrix(dg4.Rows - 1, 0) = lstKriteria(i)
dg4.Rows = dg4.Rows + 1
Next
dg4.ColWidth(dg4.Cols - 1) = 1000
dg4.TextMatrix(dg4.Rows - 1, 0) = "Jumlah"
```

```
isiMatriksPerbandinganBerpsangan cmbKriteria.Text
Else
MsgBox "Kriteria Tidak Ada!"
End If
End Sub
```

```
Sub isiMatriksPerbandinganBerpsangan(kriteria As String)
Dim rs As New ADODB.Recordset
```

```
rs.Open "select * from `pberpasangan` where `kriteria`='" & kriteria & "'", Konektor
```

```
For i = 1 To jlhKriteria
dg1.TextMatrix(i, i) = 1
Next
```

```
If Not rs.EOF Then
Do While Not rs.EOF
If Val(rs!rowindex) > Val(rs!ColIndex) Then
dg1.TextMatrix(Val(rs!rowindex) + 1, Val(rs!ColIndex) + 1) = Val(Format((rs!nilai),
"0.000"))
Else
dg1.TextMatrix(Val(rs!rowindex) + 1, Val(rs!ColIndex) + 1) = Val(rs!nilai)
End If
rs.MoveNext
Loop
hitungMatriksPerbandinganBerpasangan
hitungMatriksNilaiKriteria
"hitungMatriksPenjumlahanTiapBaris"
```

```

hitungMatriksRasioKonsistensi
    hitungLainya
    End If
End Sub

```

```

Sub hitungMatriksPerbandinganBerpasangan()
    On Error Resume Next
    Dim i, j As Integer

    For i = 0 To jlhKriteria - 1
        For j = 0 To jlhKriteria - 1
            If i > j Then
                dg1.TextMatrix(i + 1, j + 1) = Format(Math.Round(Val(dg1.TextMatrix(i + 1, i + 1)) /
                    Val(dg1.TextMatrix(j + 1, i + 1))), jlhBulat), "0.000")
            End If
        Next
    Next

    For i = 0 To jlhKriteria - 1
        Dim jlh As Double
        jlh = 0
        For j = 0 To jlhKriteria - 1
            jlh = jlh + Val(dg1.TextMatrix(j + 1, i + 1))
        Next
        dg1.TextMatrix(jlhKriteria + 1, i + 1) = Format(Math.Round(jlh, jlhBulat), "0.000")
    Next
End Sub

```

```

Sub hitungMatriksNilaiKriteria()
    Dim i As Integer
    Dim j As Integer
    Dim jlh As Double
    For i = 0 To jlhKriteria - 1
        For j = 0 To jlhKriteria - 1
            dg2.TextMatrix(j + 1, i + 1) = Format(Math.Round(Val(dg1.TextMatrix(j + 1, i + 1)) /
                Val(dg1.TextMatrix(dg1.Rows - 1, i + 1))), jlhBulat), "0.000")
        Next
    Next

    For row = 0 To jlhKriteria - 1
        jlh = 0
        For kol = 0 To jlhKriteria - 1
            jlh = jlh + Val(dg2.TextMatrix(row + 1, kol + 1))
        Next
        dg2.TextMatrix(row + 1, jlhKriteria + 1) = Format(Math.Round(jlh, jlhBulat), "0.000")
    Next

    Dim lstPSK() As Double
    For row = 0 To jlhKriteria - 1

```

```

dg2.TextMatrix(row + 1, jlhKriteria + 2) = Format(Math.Round(Val(dg2.TextMatrix(row +
1, jlhKriteria + 1)) / jlhKriteria, jlhBulat), "0.000")
ReDim Preserve lstPSK(row)
lstPSK(row) = Math.Round(Val(dg2.TextMatrix(row + 1, jlhKriteria + 2)), jlhBulat)
Next

```

```

For i = 0 To jlhKriteria - 1
dg2.TextMatrix(i + 1, jlhKriteria + 3) = Format(Math.Round(lstPSK(i) / GetMax(lstPSK),
jlhBulat), "0.000")
Next

```

```

For i = 0 To jlhKriteria + 2
    jlh = 0
    For j = 0 To jlhKriteria - 1
        jlh = jlh + Val(dg2.TextMatrix(j + 1, i + 1))
    Next
    dg2.TextMatrix(jlhKriteria + 1, i + 1) = Format(Math.Round(jlh, jlhBulat), "0.000")
Next

```

End Sub

Sub hitungMatriksRasioKonsistensi()

```

Dim jlh As Double
    jlh = 0
    For row = 0 To jlhKriteria - 1
        dg4.TextMatrix(row + 1, 1) = Format(Val(dg2.TextMatrix(row + 1, jlhKriteria + 1)),
"0.000")
        dg4.TextMatrix(row + 1, 2) = Format(Val(dg2.TextMatrix(row + 1, jlhKriteria + 2)),
"0.000")
        dg4.TextMatrix(row + 1, 3) = Format(Val(dg4.TextMatrix(row + 1, 1)) +
Val(dg4.TextMatrix(row + 1, 2)), "0.000")
        jlh = jlh + Val(dg4.TextMatrix(row + 1, 3))
    Next
    dg4.TextMatrix(jlhKriteria + 1, 3) = Format(Math.Round(jlh, jlhBulat), "0.000")
End Sub

```

Sub hitungLainya()

```

nMaks.Caption = "nMaks : " & Format(Math.Round(Val(dg4.TextMatrix(jlhKriteria + 1, 3))
/ jlhKriteria, jlhBulat), "0.000")
ik.Caption = "Indeks Konsistensi : " & Format(Math.Round(((Val(dg4.TextMatrix(jlhKriteria
+ 1, 3)) / jlhKriteria) - jlhKriteria) / jlhKriteria, jlhBulat), "0.000")
rk.Caption = "Rasio Konsistensi : " & Format(Math.Round((((Val(dg4.TextMatrix(jlhKriteria
+ 1, 3)) / jlhKriteria) - jlhKriteria) / jlhKriteria) / NilaiIndeksRandom(jlhKriteria, jlhBulat),
"0.000")
Dim rc As Double
rc = Val(Format(Math.Round((((Val(dg4.TextMatrix(jlhKriteria + 1, 3)) / jlhKriteria) -
jlhKriteria) / jlhKriteria) / NilaiIndeksRandom(jlhKriteria, jlhBulat), "0.000"))
If rc < 0.1 Then
    k.Caption = "Konsistensi : Konsisten"
Else

```

```
k.Caption = "Konsistensi : Tidak Konsisten"  
    End If  
End Sub
```

```
Private Sub cmdProses_Click()  
hitungMatriksPerbandinganBerpasangan  
hitungMatriksNilaiKriteria  
"hitungMatriksPenjumlahanTiapBaris  
hitungMatriksRasioKonsistensi  
hitungLainya  
End Sub
```

```
Private Sub cmdSimpan_Click()  
    On Error Resume Next  
Konektor.Execute "delete from `pberpasangan` where `kriteria`=" & cmbKriteria.Text & ""  
  
    For i = 0 To jlhKriteria - 1  
        For j = 0 To jlhKriteria - 1  
Konektor.Execute "insert into `pberpasangan` values(" & cmbKriteria.Text & "," & j & ","  
        & i & "," & dg1.TextMatrix(i + 1, j + 1) & ")"  
            Next  
        Next
```

```
Konektor.Execute "delete from `hasil` where `kriteria`=" & cmbKriteria.Text & ""  
  
    For i = 0 To jlhKriteria - 1  
Konektor.Execute "insert into `hasil` values(" & cmbKriteria.Text & "," & strKriteria(i) &  
        ", " & Val(dg2.TextMatrix(i + 1, jlhKriteria + 3)) & ")"  
            Next  
        MsgBox ("Data Tersimpan")  
    End Sub
```

```
Private Sub cmbKriteria_Click()  
BuatMatriks Me.cmbKriteria.Text  
End Sub
```

```
Private Sub Command1_Click()  
    Unload Me  
End Sub
```

```
Private Sub dg1_DblClick()  
    If dg1.col > dg1.row Then  
        txtNilai.Visible = True  
        txtNilai.Width = dg1.CellWidth  
        txtNilai.Height = dg1.CellHeight  
        txtNilai.Left = dg1.CellLeft + 15  
        txtNilai.Top = dg1.CellTop + 360  
        txtNilai.Text = dg1.Text  
        dg1.Enabled = False  
        txtNilai.SetFocus
```

```
End If
End Sub
```

```
Private Sub Form_Load()
    dg1.WordWrap = True
    dg2.WordWrap = True
    dg4.WordWrap = True
    jlhBulat = 3
    loading
End Sub
```

```
Private Sub ik_Click()
```

```
End Sub
```

```
Private Sub txtNilai_KeyPress(KeyAscii As Integer)
    If KeyAscii = 13 Then
        If Val(txtNilai.Text) > 0 Then
            dg1.Enabled = True
            dg1.Text = Val(txtNilai.Text)
            txtNilai.Visible = False
            dg1.SetFocus
        Else
            MsgBox "Nilai Harus > 0"
        End If
    End If
End Sub
```

No	Nip	Kandidat	Status Kelengkapan
1	19600103 199404 1 001	Sony	Belum Lengkap
2	19610605 199103 1 003	Iwan	Sudah Lengkap
3	19670112 199403 2 003	Asih	Sudah Lengkap
4	19680715 199403 1 007	Roni	Belum Lengkap
5	19730830 199903 1 005	Fahrudi	Sudah Lengkap
6	19750617 199703 1 003	Karman	Sudah Lengkap
7	19840705 200901 1 001	Anto	Belum Lengkap
8	19881218 200902 1 002	Ani	Sudah Lengkap

Syntax :

```
Dim recMe As New ADODB.Recordset
```

```
Private Sub cmdRefresh_Click()
    buatTabel
    tampilData
    cekVerifikasi
End Sub
```

```
Private Sub Command1_Click()
    Unload Me
```

End Sub

```
Private Sub Form_Load()  
    Koneksi  
    buatTabel  
    tampilData  
    cekVerifikasi  
End Sub
```

```
Sub buatTabel()  
With Me.MSFlexGrid1  
    .Cols = 0  
    .Rows = 1  
  
    .Cols = 4  
    .TextMatrix(0, 0) = "No"  
    .ColWidth(0) = 1000  
    .ColAlignment(0) = 3  
  
    .TextMatrix(0, 1) = "Nip"  
    .ColWidth(1) = 3000  
    .ColAlignment(1) = 3  
  
    .TextMatrix(0, 2) = "Kandidat"  
    .ColWidth(2) = 3500  
  
    .TextMatrix(0, 3) = "Status Kelengkapan"  
    .ColWidth(3) = 2000  
    .ColAlignment(3) = 3  
End With  
End Sub
```

```
Sub tampilData()  
    Dim q As String  
    q = "select * from `kandidat` order by `Nip`"  
    recMe.Open q, Konektor, adOpenDynamic, adLockBatchOptimistic  
    Dim No As Integer  
    No = 1  
    Do While Not recMe.EOF  
        Me.MSFlexGrid1.Rows = Me.MSFlexGrid1.Rows + 1  
        Me.MSFlexGrid1.TextMatrix(No, 0) = No  
        Me.MSFlexGrid1.TextMatrix(No, 1) = recMe!Nip  
        Me.MSFlexGrid1.TextMatrix(No, 2) = recMe!Nama  
        No = No + 1  
        recMe.MoveNext  
    Loop  
    recMe.Close  
End Sub
```

```
Sub cekVerifikasi()
```

```
Dim i As Integer
Dim q As String
Dim kelengkapan() As String
```

```
q = "select * from `kelengkapan` order by `Kode`"
recMe.Open q, Konektor, adOpenDynamic, adLockBatchOptimistic
i = 0
If Not recMe.EOF Then
Do While Not recMe.EOF
ReDim Preserve kelengkapan(i)
kelengkapan(i) = recMe!kelengkapan
recMe.MoveNext
i = i + 1
Loop
Else
MsgBox "Data Kelengkapan Tidak Ada!"
Exit Sub
End If
recMe.Close
```

```
For i = 1 To Me.MSFlexGrid1.Rows - 1
q = "select * from `verifikasi` where `Kandidat`=" & Me.MSFlexGrid1.TextMatrix(i, 1) &
""
```

```
recMe.Open q, Konektor, adOpenDynamic, adLockBatchOptimistic
Dim YesCount As Integer
YesCount = 0
Me.MSFlexGrid1.row = i
Me.MSFlexGrid1.col = 3
If Not recMe.EOF Then
Do While Not recMe.EOF
Dim j As Integer
Dim strKelengkapan As String
strKelengkapan = recMe!kelengkapan
```

```
For j = 0 To UBound(kelengkapan)
If Strings.LCase(strKelengkapan) = Strings.LCase(kelengkapan(j)) Then
If recMe!Validasi = "Yes" Then
YesCount = YesCount + 1
End If
Exit For
End If
Next j
recMe.MoveNext
Loop
If YesCount = UBound(kelengkapan) + 1 Then
Me.MSFlexGrid1.TextMatrix(i, 3) = "Sudah Lengkap"
Me.MSFlexGrid1.CellBackColor = vbGreen
Else
Me.MSFlexGrid1.TextMatrix(i, 3) = "Belum Lengkap"
Me.MSFlexGrid1.CellBackColor = vbRed
```



```

End If
Else
Me.MSFlexGrid1.TextMatrix(i, 3) = "Belum Lengkap"
Me.MSFlexGrid1.CellBackColor = vbRed
End If
recMe.Close
Next i
End Sub

```

```

Private Sub MSFlexGrid1_Click()
frmVerifikasi.cmbKandidat.Text = Me.MSFlexGrid1.TextMatrix(Me.MSFlexGrid1.row, 1)
frmVerifikasi.Show vbModal
End Sub

```

NIP	Nama	Pendidikan	Perencanaan	Masa Kerja	Penghargaan	Keterampilan	Konseptual	Hubungan Ke
19610605 19910	Iwan	Sangat Baik	Baik	Baik	Baik	Baik	Baik	Baik
19670112 19940	Asih	Baik	Baik	Baik	Baik	Baik	Baik	Baik
19730830 19990	Fahrudi	Sangat Baik	Baik	Baik	Baik	Baik	Baik	Baik
19750617 19970	Karman	Sangat Baik	Baik	Cukup	Cukup	Baik	Baik	Baik
19881218 20090	Ani	Baik	Baik	Cukup	Cukup	Cukup	Baik	Baik

Syntax :

Dim NipKandidat() As String

Dim NipLengkap() As String

Dim recMe As New ADODB.Recordset

Sub cekVerifikasi()

Dim i As Integer

Dim q As String

Dim kelengkapan() As String

q = "select * from `kandidat` order by `Nip`"

recMe.Open q, Konektor, adOpenDynamic, adLockBatchOptimistic

Dim No As Integer

No = 0

Do While Not recMe.EOF

ReDim Preserve NipKandidat(No)

NipKandidat(No) = recMe!Nip

No = No + 1

recMe.MoveNext

```

Loop
recMe.Close

q = "select * from `kelengkapan` order by `Kode`"
recMe.Open q, Konektor, adOpenDynamic, adLockBatchOptimistic
i = 0
If Not recMe.EOF Then
Do While Not recMe.EOF
ReDim Preserve kelengkapan(i)
kelengkapan(i) = recMe!kelengkapan
recMe.MoveNext
i = i + 1
Loop
Else
MsgBox "Data Kelengkapan Tidak Ada!"
Exit Sub
End If
recMe.Close

No = 0
For i = 0 To UBound(NipKandidat)
q = "select * from `verifikasi` where `Kandidat`=" & NipKandidat(i) & ""
recMe.Open q, Konektor, adOpenDynamic, adLockBatchOptimistic
Dim YesCount As Integer
YesCount = 0
If Not recMe.EOF Then
Do While Not recMe.EOF
Dim j As Integer
Dim strKelengkapan As String
strKelengkapan = recMe!kelengkapan
For j = 0 To UBound(kelengkapan)
If Strings.LCase(strKelengkapan) = Strings.LCase(kelengkapan(j)) Then
If recMe!Validasi = "Yes" Then
YesCount = YesCount + 1
End If
Exit For
End If
Next j
recMe.MoveNext
Loop
If YesCount = UBound(kelengkapan) + 1 Then
ReDim Preserve NipLengkap(No)
NipLengkap(No) = NipKandidat(i)
No = No + 1
End If
End If
recMe.Close
Next i
End Sub

```

```

Function getNama(Nip As String) As String
    Dim rs As New ADODB.Recordset
rs.Open "select `Nama` from `kandidat` where `Nip`='" & Nip & "'", Konektor,
        adOpenDynamic, adLockBatchOptimistic
    Do While Not rs.EOF
        getNama = rs!Nama
        rs.MoveNext
    Loop
    rs.Close
End Function

```

```

Sub loading()
    Dim i As Integer
    dg1.Cols = 1
    dg1.Rows = 1

```

```

'dg1.Cols = dg1.Cols + 1
dg1.TextMatrix(0, 0) = "NIP"
'dg1.Cols = dg1.Cols + 1
dg1.TextMatrix(0, 1) = "Nama"

```

```

Dim rs As New ADODB.Recordset

```

```

rs.Open "Select * from `kriteria` order by urutan asc", Konektor
    Do While Not rs.EOF
        dg1.Cols = dg1.Cols + 1
        dg1.TextMatrix(0, dg1.Cols - 1) = rs!kriteria
        rs.MoveNext
    Loop
    rs.Close

```

```

For i = 0 To dg1.Cols - 1
    dg1.ColAlignment(i) = 1
    dg1.ColWidth(i) = 1500
Next i

```

```

'sql = "select * from `kandidat` order by `Nip` asc"
rs.Open sql, Konektor

```

```

    i = 1
    Do While Not rs.EOF
        dg1.Rows = dg1.Rows + 1
        dg1.TextMatrix(i, 0) = rs!Nip
        dg1.TextMatrix(i, 1) = rs!Nama
        i = i + 1
        rs.MoveNext
    Loop
    rs.Close

```

```

For i = 0 To UBound(NipLengkap)

```

```

        dg1.Rows = dg1.Rows + 1
        dg1.TextMatrix(i + 1, 0) = NipLengkap(i)
        dg1.TextMatrix(i + 1, 1) = getNama(NipLengkap(i))
        Next i

        sql = "select * from `nilaikandidat`"
        rs.Open sql, Konektor

        If Not rs.EOF Then
            rs.Close
            For j = 0 To dg1.Rows - 1
                sql = "select `subkriteria` from `nilaikandidat` where `kandidat`='" & _
                    dg1.TextMatrix(j, 0) & "'"

                rs.Open sql, Konektor
                i = 0
                Do While Not rs.EOF
                    dg1.TextMatrix(j, i + 2) = rs!subkriteria
                    i = i + 1
                    rs.MoveNext
                Loop
                rs.Close
                Next
            Else
                rs.Close
            End If
        End Sub

Private Sub cmbNilai_Click()
    dg1.Text = cmbNilai.Text
    cmbNilai.Visible = False
    dg1.Enabled = True
    dg1.SetFocus
End Sub

Private Sub cmdRefresh_Click()
    cekVerifikasi
    loading
End Sub

Private Sub cmdSimpan_Click()
    Dim i, j As Integer
    Dim terisi As Boolean
    terisi = True
    For i = 2 To dg1.Cols - 1
        For j = 1 To dg1.Rows - 1
            If dg1.TextMatrix(j, i) = "" Then
                terisi = False
            End If
        Next
    Next

```

```

        Next

        If terisi = True Then
            Dim sql As String
            sql = "delete from `nilaikandidat`"
            Konektor.Execute sql

            For i = 2 To dg1.Cols - 1
                For j = 0 To dg1.Rows - 2
                    sql = "insert into `nilaikandidat` values('" & dg1.TextMatrix(j + 1, 0) & "'," & _
                        dg1.TextMatrix(0, i) & "'," & dg1.TextMatrix(j + 1, i) & "',0)"

                    Konektor.Execute sql
                Next
            Next

            MsgBox ("Data Tersimpan")
        Else
            MsgBox ("Data belum terisi semua!")
        End If

    End Sub

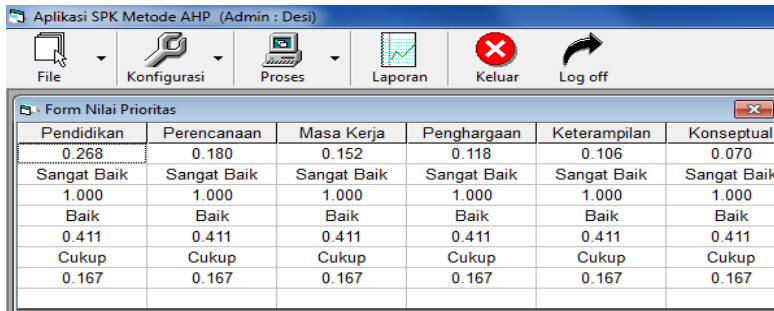
Private Sub Command1_Click()
    Unload Me
End Sub

Private Sub dg1_DblClick()
    If dg1.col > 1 Then
        Dim rs As New ADODB.Recordset
        rs.Open "select `Sub Kriteria` from `subkriteria` where `Kriteria`=" & dg1.TextMatrix(0,
            dg1.col) & "'", Konektor
        cmbNilai.Clear
        Do While Not rs.EOF
            cmbNilai.AddItem rs![Sub Kriteria]
            rs.MoveNext
        Loop
        rs.Close
        cmbNilai.Visible = True
        cmbNilai.Width = dg1.CellWidth
        cmbNilai.Left = dg1.CellLeft + 15
        cmbNilai.Top = dg1.CellTop
        cmbNilai.Text = dg1.Text
        dg1.Enabled = False
        cmbNilai.SetFocus
    End If
End Sub

Private Sub Form_Load()
    Koneksi
    cekVerifikasi

```

loading
End Sub



Pendidikan	Perencanaan	Masa Kerja	Penghargaan	Keterampilan	Konseptual
0.268	0.180	0.152	0.118	0.106	0.070
Sangat Baik	Sangat Baik	Sangat Baik	Sangat Baik	Sangat Baik	Sangat Baik
1.000	1.000	1.000	1.000	1.000	1.000
Baik	Baik	Baik	Baik	Baik	Baik
0.411	0.411	0.411	0.411	0.411	0.411
Cukup	Cukup	Cukup	Cukup	Cukup	Cukup
0.167	0.167	0.167	0.167	0.167	0.167

```
Syntax :  
Private Sub Form_Load()  
    Koneksi  
    Dim sql As String  
    sql = "select `kriteria`.`kriteria`,`hasil`.`subkriteria`,`hasil`.`hasil` from `kriteria`,`hasil`  
    where `kriteria`.`kriteria`=`hasil`.`subkriteria` order by `kriteria`.`urutan` asc"  
    Dim rs As New ADODB.Recordset  
  
    rs.Open sql, Konektor  
  
    Dim lstHasil() As Double  
  
    Dim i As Integer  
    i = 0  
    dg1.Cols = 0  
    dg1.Rows = 1  
  
    Do While Not rs.EOF  
        dg1.Cols = dg1.Cols + 1  
        dg1.Rows = dg1.Rows + 1  
  
        dg1.TextMatrix(0, i) = rs!kriteria  
  
        ReDim Preserve lstHasil(i)  
        lstHasil(i) = rs!hasil  
  
        i = i + 1  
        rs.MoveNext  
    Loop  
    rs.Close  
  
    i = 0  
    Do While i <= UBound(lstHasil)  
        dg1.TextMatrix(1, i) = Format(lstHasil(i), "0.000")  
        i = i + 1  
    Loop
```

```

        i = 0
        Dim j As Integer
        Do While i <= UBound(lstHasil)
            sql = "select `hasil`.`subkriteria`,`hasil`.`hasil` from `hasil`,`subkriteria` where " & _
            "`hasil`.`subkriteria`=`subkriteria`.`sub kriteria` and `hasil`.`kriteria`=" & dg1.TextMatrix(0,
                i) & _
            "" and `subkriteria`.`kriteria`=" & dg1.TextMatrix(0, i) & "" order by `subkriteria`.`urutan`
                asc"
            rs.Open sql, Konektor

            j = 0
            Do While Not rs.EOF
                dg1.TextMatrix(j * 2 + 2, i) = rs!subkriteria
                dg1.TextMatrix(j * 2 + 3, i) = Format(rs!hasil, "0.000")
                j = j + 1
            rs.MoveNext
            Loop
            rs.Close
            i = i + 1
        Loop

        For i = 0 To dg1.Cols - 1
            dg1.ColWidth(i) = 1500
            dg1.ColAlignment(i) = 3
        Next i
    End Sub

```

Nip	Nama	Pendidikan	Perencanaan	Masa Kerja	Penghar	Nip	Nama	Nilai AHP	Rangkings	Gr
19610605 19910	Iwan	0.268	0.074	0.062	0.048	19610605 19910	Iwan	0.569	1	B
19670112 19940	Asih	0.110	0.074	0.062	0.048	19730830 19990	Fahrudi	0.569	2	B
19730830 19990	Fahrudi	0.268	0.074	0.062	0.048	19750617 19970	Karman	0.504	3	B
19750617 19970	Karman	0.268	0.074	0.025	0.020	19670112 19940	Asih	0.411	4	B
19881218 20090	Ani	0.110	0.074	0.025	0.020	19881218 20090	Ani	0.320	5	B

```

Private Sub dg1_DbClick()
    If dg1.col > 1 Then
        Dim rs As New ADODB.Recordset
        rs.Open "select `Sub Kriteria` from `subkriteria` where `Kriteria`=" & dg1.TextMatrix(0,
            dg1.col) & "", Konektor
        cmbNilai.Clear
        Do While Not rs.EOF
            cmbNilai.AddItem rs![Sub Kriteria]
            rs.MoveNext
        Loop
    End If
End Sub

```

```

rs.Close
cmbNilai.Visible = True
cmbNilai.Width = dg1.CellWidth
cmbNilai.Left = dg1.CellLeft + 15
cmbNilai.Top = dg1.CellTop
cmbNilai.Text = dg1.Text
dg1.Enabled = False
cmbNilai.SetFocus
End If
End Sub

```

```

Private Sub Form_Load()
Koneksi
cekVerifikasi
loading
End Sub

```

Syntak Laporan :

```

Private Sub cmdKriteria_Click()
Set mRep = Nothing
Set mRep = mApp.OpenReport(App.Path & "\LAPORAN\rptKriteria.rpt")
mRep.Database.SetDataSource (App.Path & "\ahp.mdb")
Call Laporan
End Sub

```

```

Sub Laporan()
mRep.DiscardSavedData

```

```

For Each crTab In mRep.Database.Tables
crTab.Location = App.Path & "\ahp.mdb"
Next

```

```

Me.CRViewer1.ReportSource = mRep
Me.CRViewer1.ViewReport
End Sub

```

```

Private Sub CRViewer1_CloseButtonClicked(UseDefault As Boolean)

```

```

End Sub

```

```

Private Sub Form_Load()
With Me.CRViewer1
.DisplayGroupTree = False
.DisplayTabs = False
.DisplayToolbar = True
.EnableAnimationCtrl = False
.EnableCloseButton = True

```



```

        .EnableDrillDown = True
        .EnableExportButton = True
        .EnableGroupTree = True
        .EnableHelpButton = False
        .EnableNavigationControls = True
        .EnablePopupMenu = True
        .EnablePrintButton = True
        .EnableProgressControl = False
        .EnableRefreshButton = True
        .EnableSearchControl = True
        .EnableSearchExpertButton = True
        .EnableSelectExpertButton = True
        .EnableStopButton = True
        .EnableToolbar = True
        .EnableZoomControl = True
        End With
    End Sub

```

```

    Private Sub Form_Resize()
        Me.Frame1.Left = 10
        Me.Frame1.Top = 10
        Me.Frame1.Width = Me.Width - 150

```

```

        Me.CRViewer1.Left = 10
        Me.CRViewer1.Top = 10 + Me.Frame1.Top + Me.Frame1.Height
        Me.CRViewer1.Width = Me.Width - 150
        Me.CRViewer1.Height = Me.Height - 450 - Me.CRViewer1.Top
    End Sub

```

```

    Private Sub Form_Unload(Cancel As Integer)
        On Error Resume Next
    End Sub

```

```

    Syntak pilihan laporan : Dim NipKandidat() As String
        Dim NipLengkap() As String
        Dim recMe As New ADODB.Recordset

```

```

        Sub cekVerifikasi()
            Dim i As Integer
            Dim q As String
            Dim kelengkapan() As String

```

```

            q = "select * from `kandidat` order by `Nip`"
            recMe.Open q, Konektor, adOpenDynamic, adLockBatchOptimistic
            Dim No As Integer
            No = 0
            Do While Not recMe.EOF
                ReDim Preserve NipKandidat(No)
                NipKandidat(No) = recMe!Nip
                No = No + 1

```

```

recMe.MoveNext
    Loop
recMe.Close

q = "select * from `kelengkapan` order by `Kode`"
recMe.Open q, Konektor, adOpenDynamic, adLockBatchOptimistic
    i = 0
    If Not recMe.EOF Then
        Do While Not recMe.EOF
            ReDim Preserve kelengkapan(i)
            kelengkapan(i) = recMe!kelengkapan
            recMe.MoveNext
            i = i + 1
        Loop
    Else
        MsgBox "Data Kelengkapan Tidak Ada!"
        Exit Sub
    End If
recMe.Close

No = 0
For i = 0 To UBound(NipKandidat)
q = "select * from `verifikasi` where `Kandidat`='" & NipKandidat(i) & "'"
recMe.Open q, Konektor, adOpenDynamic, adLockBatchOptimistic
    Dim YesCount As Integer
    YesCount = 0
    If Not recMe.EOF Then
        Do While Not recMe.EOF
            Dim j As Integer
            Dim strKelengkapan As String
            strKelengkapan = recMe!kelengkapan
            For j = 0 To UBound(kelengkapan)
                If Strings.LCase(strKelengkapan) = Strings.LCase(kelengkapan(j)) Then
                    If recMe!Validasi = "Yes" Then
                        YesCount = YesCount + 1
                    End If
                End If
            Next j
            recMe.MoveNext
        Loop
    If YesCount = UBound(kelengkapan) + 1 Then
        ReDim Preserve NipLengkap(No)
        NipLengkap(No) = NipKandidat(i)
        No = No + 1
    End If
End If
recMe.Close
Next i
End Sub

```

```

Function getNama(Nip As String) As String
    Dim rs As New ADODB.Recordset
rs.Open "select `Nama` from `kandidat` where `Nip`='" & Nip & "'", Konektor,
    adOpenDynamic, adLockBatchOptimistic
    Do While Not rs.EOF
        getNama = rs!Nama
        rs.MoveNext
    Loop
    rs.Close
End Function

```

```

Private Sub cmbKandidat_Click()
Me.OpKandidat.Caption = "Pilih " & getNama(Me.cmbKandidat.Text)
End Sub

```

```

Private Sub cmdBatal_Click()
    Cancel = True
    Unload Me
End Sub

```

```

Private Sub cmdLaporan_Click()
If Me.OpSemua.Value = True Then
    Semua = True
    Unload Me
Else
If Me.cmbKandidat.Text <> "" Then
    Semua = False
    Nip = Me.cmbKandidat.Text
    Cancel = False
    Unload Me
Else
    MsgBox "Pilih Kandidat!"
End If

```